

ZELLETTI GRAVEL PIT EXPANSION

ZELLETTI GRAVEL  
PIT EXPANSION  
BOUNDARY LINE

END NEW ACCESS  
AND NEW PIPELINE  
40' ROAD RIGHT OF WAY  
AND EASEMENT  
(SEE CENTERLINE SURVEY FOR DETAILS)

# SITE PLAN

XTO ENERGY INC.  
ZELLETTI 34-9 #34-4  
SURFACE HOLE: 1166' FSL, 1990' FWL  
SECTION 34, T-34-N, R-09-W, N.M.P.M.,  
LA PLATA COUNTY, COLORADO  
LAT: 37.14317° N LONG: 107.81518° W NAD 83  
ELEVATION AT STAKE = 6,692' NAVD 88

## Legend

- WELL FLAG
- WELL HEAD
- RIG ANCHOR
- GAS & H2O P/L'S
- FENCE
- GRAVEL AREA
- MARSH
- SIXTEENTH QUARTER
- 5 FT. CONTOUR
- PROPOSED PAD & EQUIPMENT
- TOTAL DISTURBANCE

## NOTES:

- DATE OF FIELD SURVEY 7/29/08
- THE LOCATIONS OF UNDERGROUND UTILITIES DEPICTED ARE APPROXIMATE. ACTUAL LOCATIONS OF UNDERGROUND UTILITIES MUST BE FIELD VERIFIED PRIOR TO CONSTRUCTION.
- CONTOUR INTERVAL = 5 FT.
- CONTOUR INFORMATION SOURCE = LA PLATA COUNTY GIS DATA AND/OR ACTUAL FIELD DATA.
- DESCRIPTION OF VEGETATION WITHIN LIMITS OF PROPOSED DISTURBANCE: ±70% - NO VEG., ±30% - WILDERNESS
- WELL PAD DIMENSIONS AS SHOWN HEREON = 1.65 ACRES  
TOTAL DISTURBED AND PERMITTED AREA = 1.71 ACRES  
AMOUNT OF EXISTING DISTURBANCE = 1.24 ACRES  
AMOUNT OF NEW DISTURBANCE = 0.47 ACRES

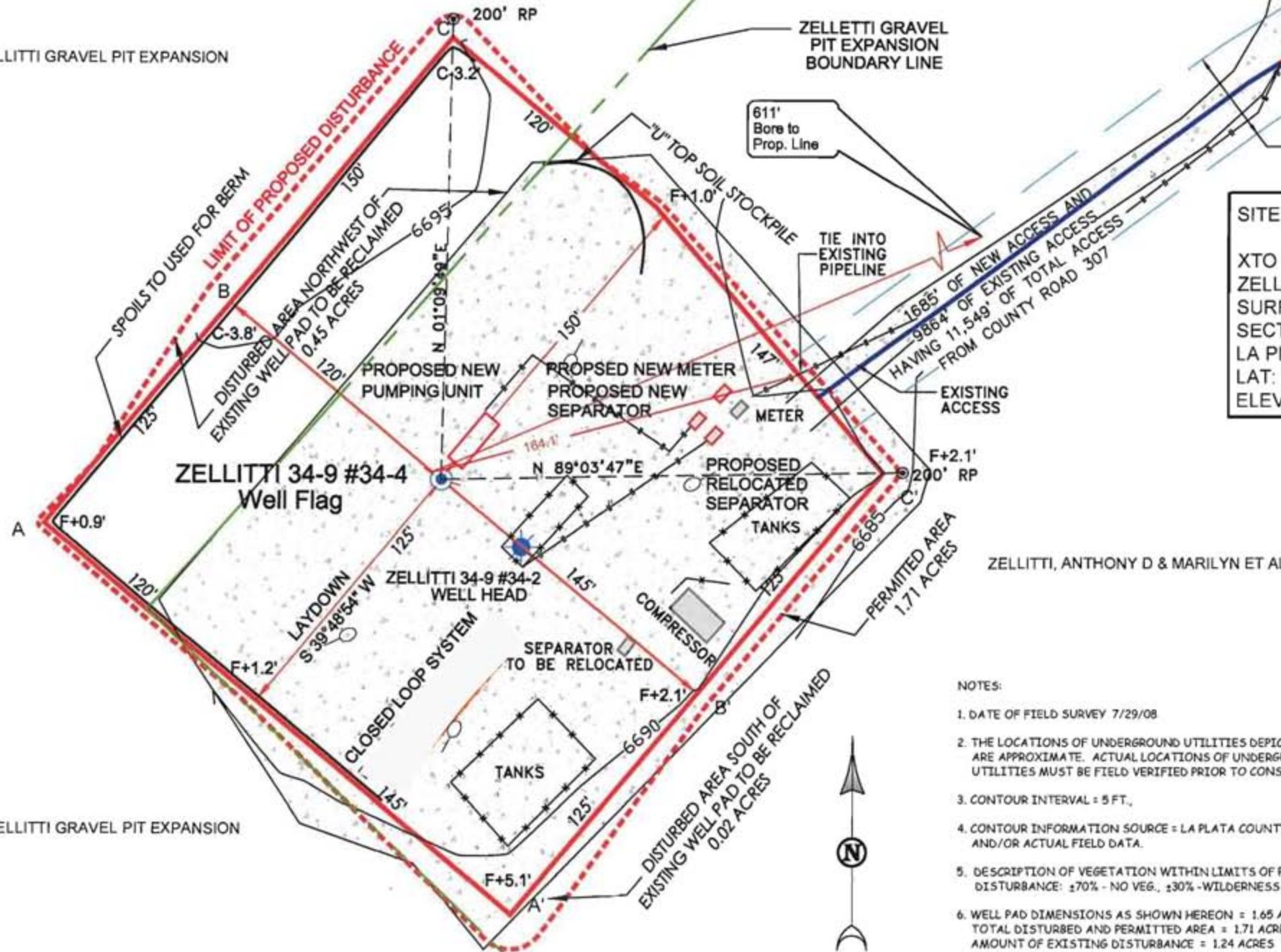
TO HAVE THIS DRAWING'S SCALE TO EQUAL  
1"=50', COPY TO AN 11"x17" SHEET WITH A  
SCALE FACTOR OF 1.2 OR PRINT TO AN 11"x17"  
SHEET AT 120%.

30' 0 30' 60'  
1 inch equals 60 feet



**Russell Surveying, Inc.**  
1409 W. Aztec Blvd. #2  
Aztec, New Mexico 87410  
(505) 334-8637

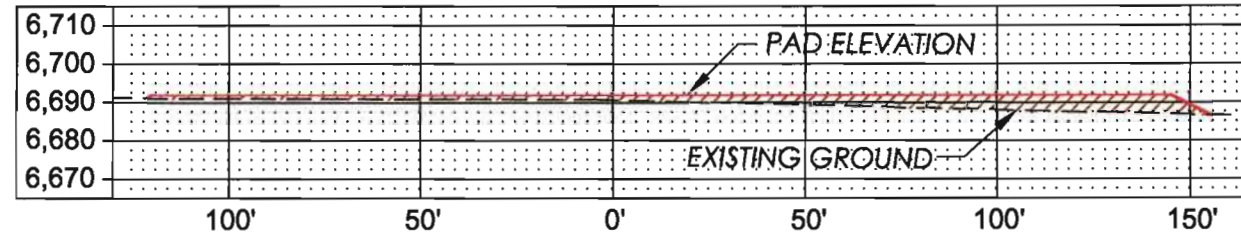
JOB# XTO035 DATE: 12/29/09 BY: GRR



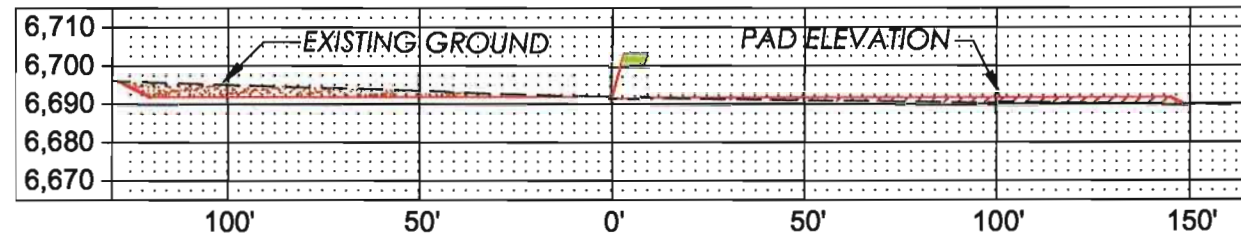
XTO ENERGY INC. - ZELLITTI 34-9 #34-4  
1166' FSL, 1990' FWL, SECTION 34, T-34-N, R-09-W, N.M.P.M.,  
LA PLATA COUNTY, COLORADO ELEVATION AT STAKE = 6,692' NAVD 88

HOR. SCALE: 1"=50'  
VER. SCALE: 1"=50'

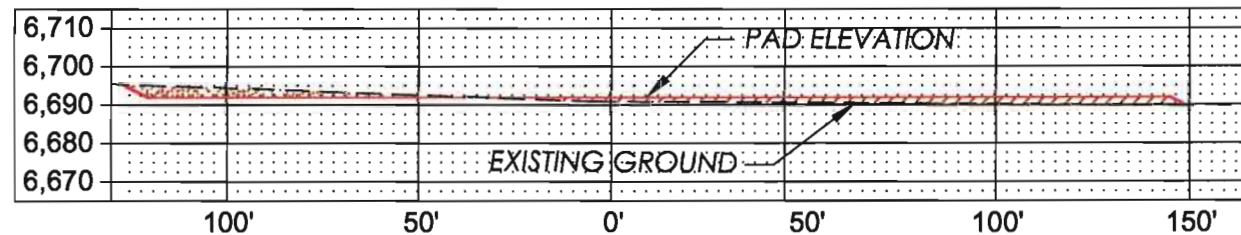
A-A'



B-B'



C-C'



**Russell Surveying, Inc.**  
1409 W. Aztec Blvd. #2  
Aztec, New Mexico 87410  
(505) 334-8637

JOB# XT0035 DATE: 12/29/09 BY: GRR