

# ACCESS ROAD MAP

BDU 1-9-299 PAD

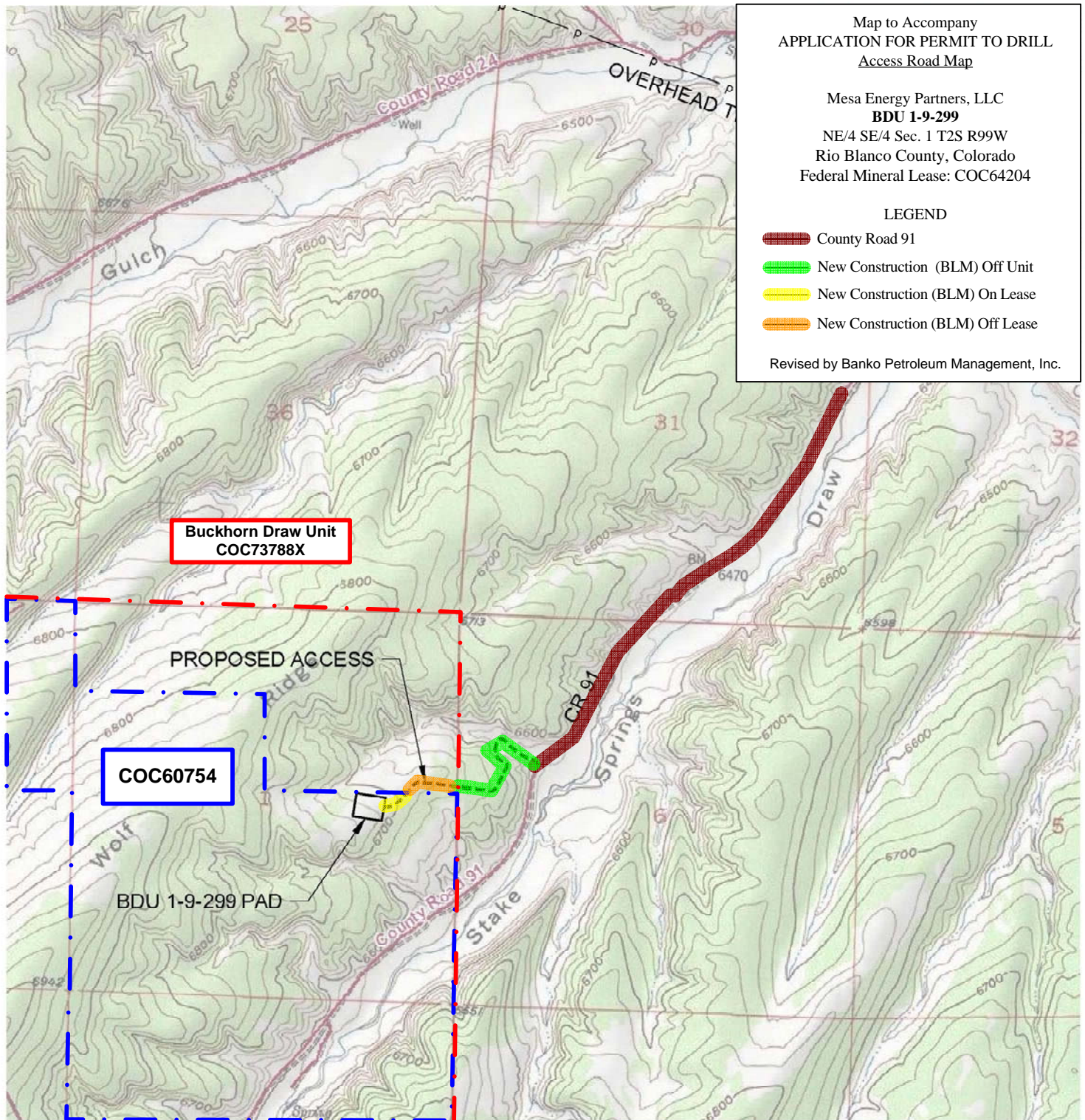
Map to Accompany  
APPLICATION FOR PERMIT TO DRILL  
Access Road Map

Mesa Energy Partners, LLC  
**BDU 1-9-299**  
NE/4 SE/4 Sec. 1 T2S R99W  
Rio Blanco County, Colorado  
Federal Mineral Lease: COC64204

## LEGEND

- County Road 91
- New Construction (BLM) Off Unit
- New Construction (BLM) On Lease
- New Construction (BLM) Off Lease

Revised by Banko Petroleum Management, Inc.



North



Graphic Scale in Feet  
1 inch = 2000 feet



LAND SURVEYING AND MAPPING  
LAFAYETTE - WINTER PARK  
Ph 303 666 0379 Fx 303 665 6320

MESA ENERGY PARTNERS, LLC  
BDU 1-9-299

NE1/4 SE1/4 SEC. 1 T2S R99W  
6th PM RIO BLANCO COUNTY COLORADO

5/17/10