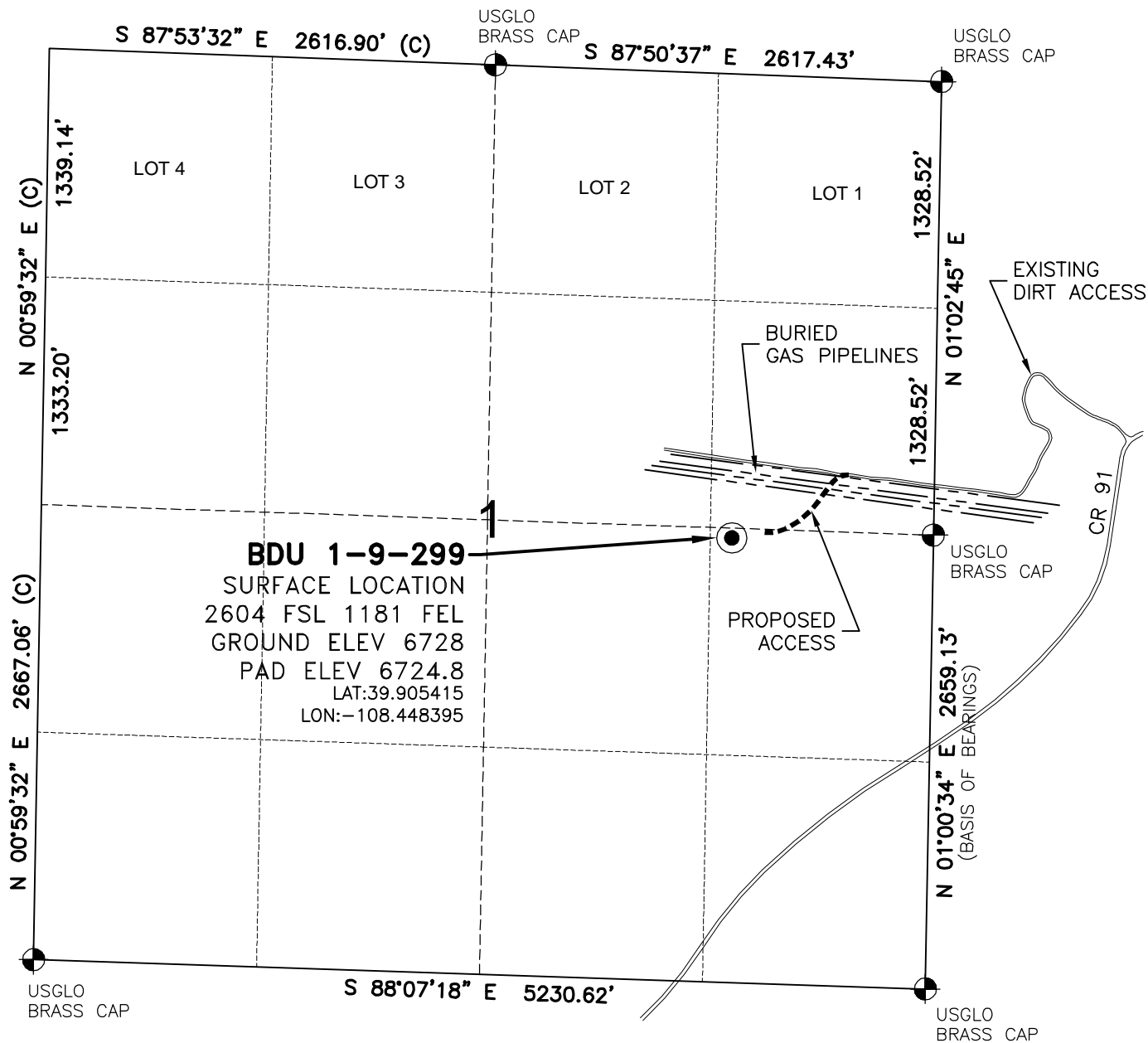


# WELL LOCATION MAP

BDU 1-9-299 PAD



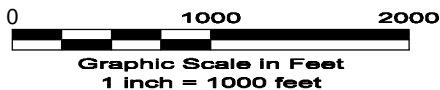
## SURVEYOR'S STATEMENT

The undersigned hereby states that the well location shown hereon was staked on the ground based on existing monumentation and/or physical evidence found in the field and is correct to the best of my knowledge, information and belief.

## NOTES

- 1.) Horizontal and vertical datum, based on NGS control point "KM 0280" with an elevation of 6434. NAVD 1988.
- 2.) All directions, distances, and dimensions shown hereon are based on coordinates from the "Colorado coordinate system of 1983 north zone" (article 52 of title 38, C.R.S.).
- 3.) All section line dimensions shown hereon are based on field measurements of existing monuments and/or physical evidence found in the field unless otherwise indicated. Refer to land survey plats deposited in Rio Blanco County & BLM Survey.
- 4.) Physical features shown hereon are for graphical representation only.
- 5.) See Form 2A for visible improvements within 400' of wellhead.
- 6.) Distances to nearest section lines are measured perpendicularly.
- 7.) This is not a land survey nor land survey plat.
- 8.) Date of Survey 5/6/10 Date of Drawing 5/17/10. REV 0  
 PDOP Reading: 1.9 Instrument Operator: EJJ

5/17/10



LAND SURVEYING AND MAPPING  
 LAFAYETTE - WINTER PARK  
 Ph 303 666 0379 Fx 303 665 6320

**MESA ENERGY PARTNERS, LLC**  
 BDU 1-9-299

NE1/4 SE1/4 SEC. 1 T2S R99W  
 6th PM RIO BLANCO COUNTY COLORADO