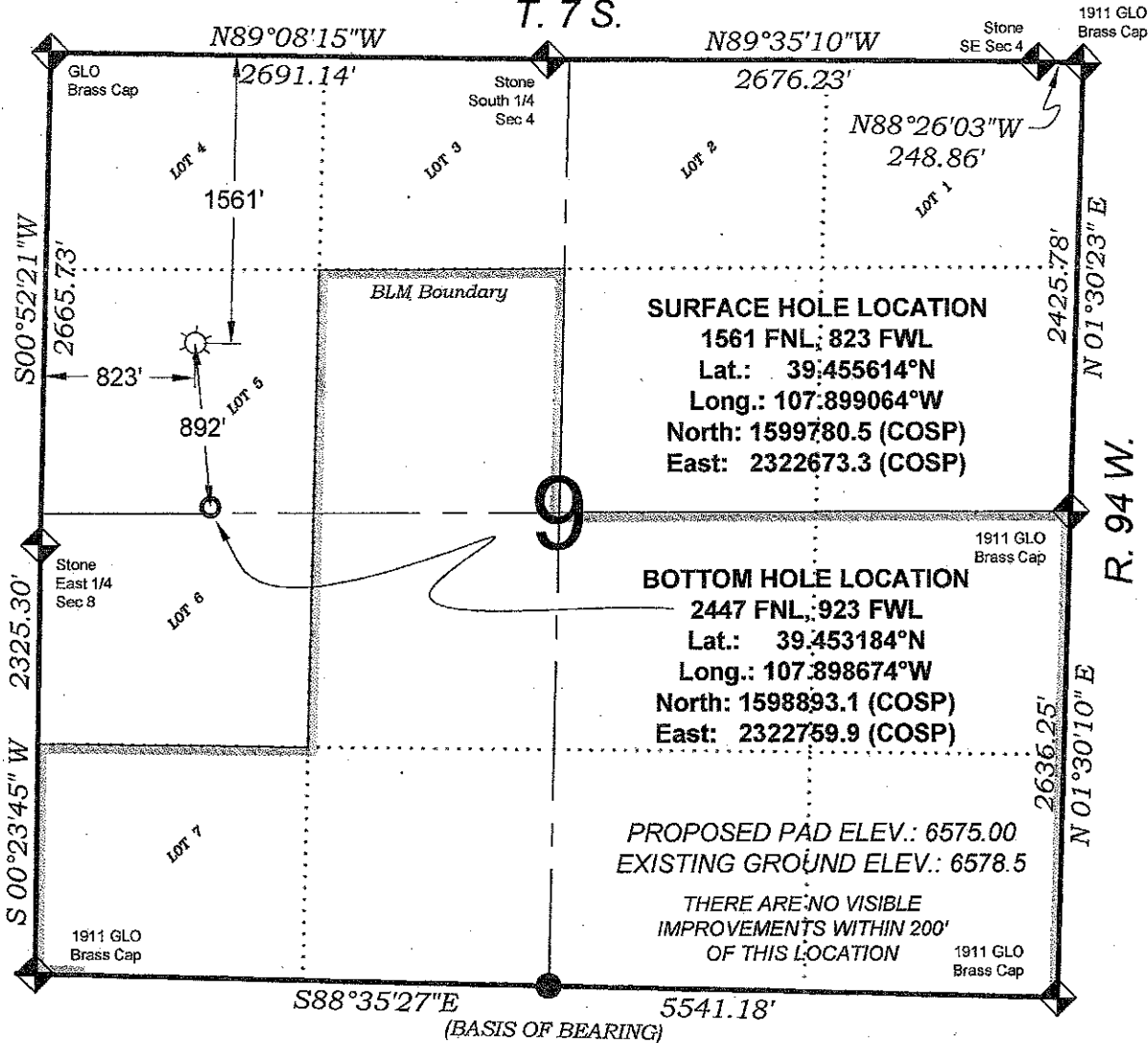


SAVAGE SR 313-9

T. 7 S.



SURVEYORS STATEMENT

I, MICHAEL J. LANGHORNE, A REGISTERED LAND SURVEYOR IN THE STATE OF COLORADO, DO HEREBY CERTIFY THAT THE SURVEY SHOWN HEREON WAS PREPARED UNDER MY DIRECT SUPERVISION AND HAS BEEN STAKED ON THE GROUND AS SHOWN ON THE PLAT AND CHECKING THAT THIS MAP IS A TRUE REPRESENTATION THEREOF.

Michael J. Langhorne

MICHAEL J. LANGHORNE, COLORADO REGISTRATION NO. 36572
 FOR AND ON BEHALF OF
 BOOKCLIFF SURVEY SERVICES, INC.

REFERENCES

- 1) EXTENSION SURVEY OF T. 7 S., R. 94 W., 6TH P.M. (GLO PLAT)
- 2) U.S.G.S. QUAD: RULISON, CO

REVISED: 3/23/10

SURVEY DATE: 4/16/08
 MAP DATE: 5/2/08
 SCALE: 1" = 1000'
 SHEET: 1 of 9
 PROJECT: WILLIAMS

- LEGEND -

FIELD LOCATED SECTION
 MONUMENTS AS DESCRIBED

FIELD SURVEYED
 WELL LOCATION

CALCULATED BOTTOM
 HOLE LOCATION

CALCULATED SECTION
 CORNER LOCATION

NOTES

- 1) ELEVATIONS BASED ON N.A.V.D. 1988 PUBLISHED COORDINATE
- 2) LATITUDES AND LONGITUDES ARE BASE ON NAD 83 PUBLISHED COORDINATES
- 3) STATE PLANE COORDINATES ARE BASED ON COLORADO CENTRAL ZONE, U.S. SURVEY FEET.
- 4) ELEVATION MASK SET TO 15"
- 5) GPS OPERATOR J.KIRPATRICK, OBSERVED A PDOP OF 3.0
- 6) SURFACE AND BOTTOM HOLE LOCATIONS ARE MEASURED 90° FROM SECTION LINES.

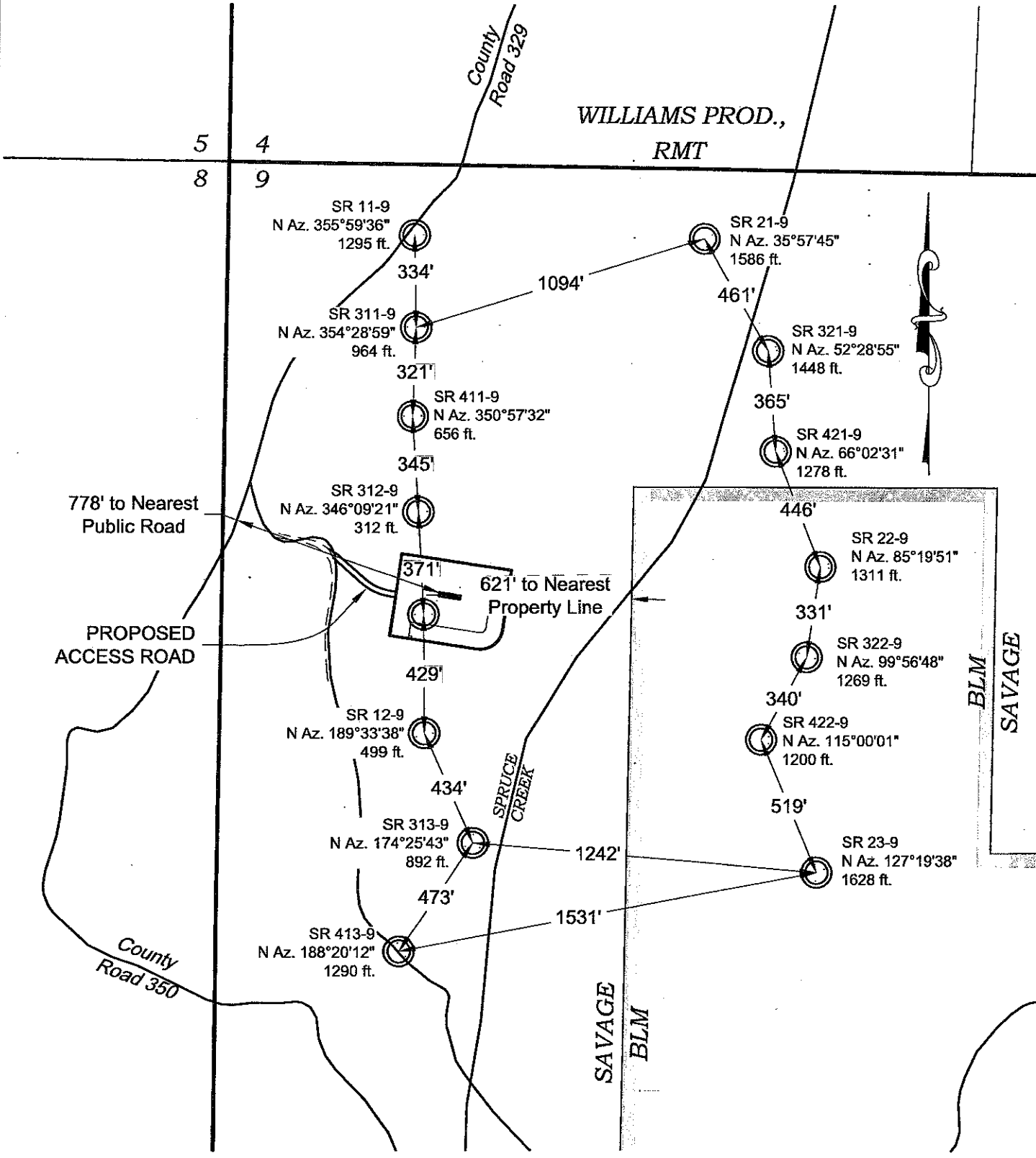
WELL LOCATION PLAT Prepared for:
Williams. Williams Production, RMT

SW1/4 NW1/4, SECTION 9
 T. 7S., R. 94 W. of the 6th. P.M.
 GARFIELD COUNTY, COLORADO

230 East Third Street
 Rifle, Colorado 81650
 PH: (970) 625-1330
 Fax: (970) 625-2773



BOOKCLIFF
 Survey Services, Inc.



REVISED: 4/12/10

SCALE:	1" = 80'
DATE:	5/5/08
SHEET:	6 of 9
PROJECT:	WILLIAMS
DFT:	DPM

Construction Plan Prepared for:

Williams. Williams Production, RMT

Federal SR 12-9 - Sheet 6

RECLAIMED PAD & PRODUCTION EQUIPMENT

136 East Third Street
Rifle, Colorado 81650
Ph. (970) 625-1330
Fax (970) 625-2773



BOOKCLIFF
Survey Services, Inc.

K:\2008 WILLIAMS CURRENT\SR 12-9\SR 12-9.dwg - 4/12/2010 10:40:06 AM, 1:1