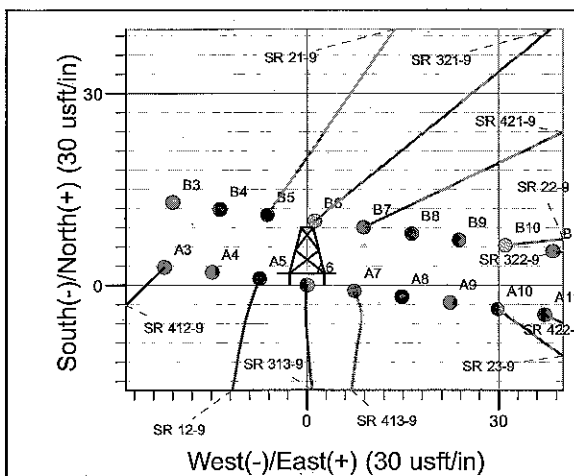
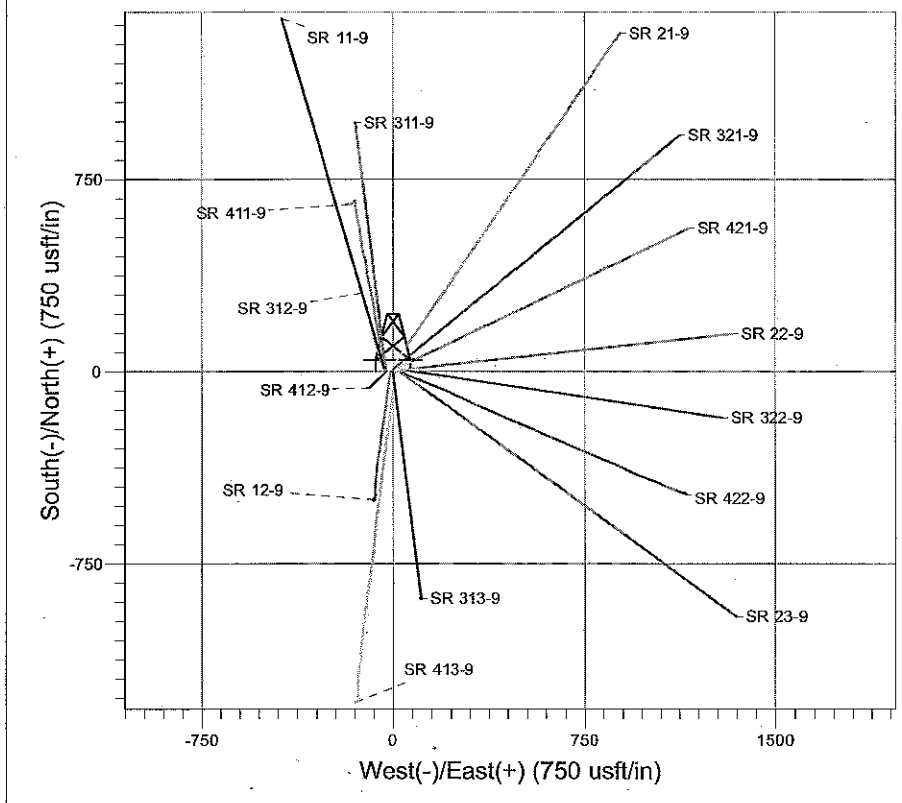
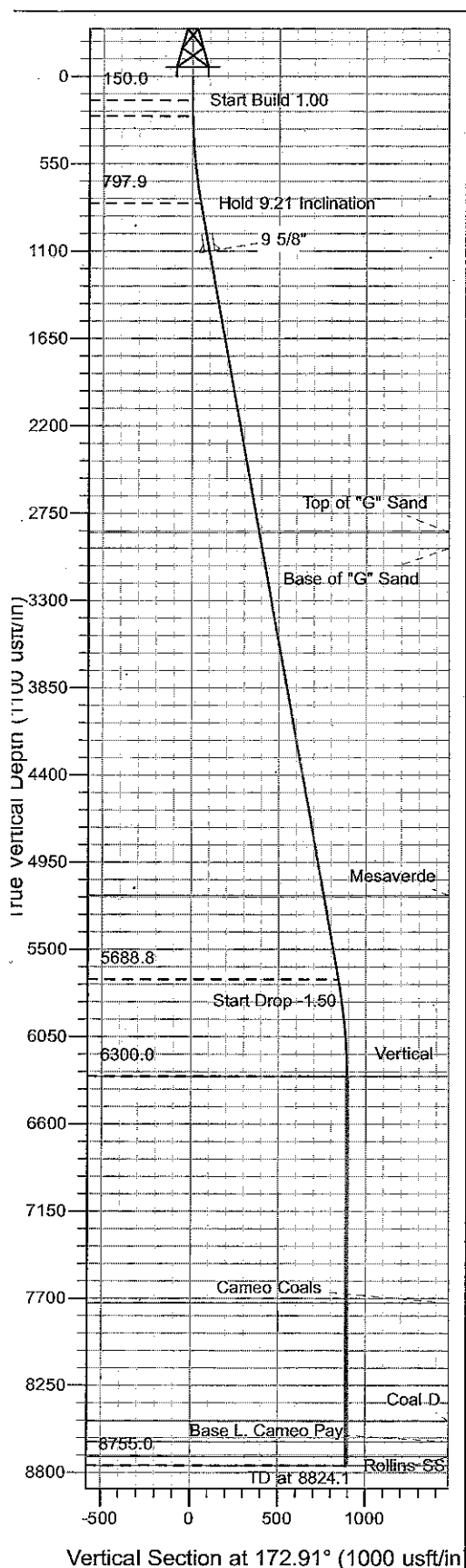




Well Name: SR 313-9
 Surface Location: SR 12-9 Pad
 North American Datum 1983 , US State Plane 1983 , Colorado Central Zone
 Ground Elevation: 6575.0
 +N/-S +E/-W Northing Easting Latitude Longitude Slot
 0.0 0.0 1599780.50 2322673.30 39° 27' 20.209 N 107° 53' 56.630 W A6
 E Rig (24') kjs Corrected KB @ 6599.0usft (E Rig (24') kjs)



Project: RU 09-07S-094W
 Site: SR 12-9 Pad
 Well: SR 313-9
 Plan: Plan #4 3Feb10 sam

T M Azimuths to True North
 Magnetic North: 10.73°
 Magnetic Field
 Strength: 52603.4snT
 Dip Angle: 65.83°
 Date: 1/10/2008
 Model: IGRF2005-10

SECTION DETAILS

Sec	MD	Inc	Azi	TVD	+N/-S	+E/-W	Dleg	TFace	Vsect	Target
1	0.0	0.00	0.00	0.0	0.0	0.0	0.00	0.000	0.0	
2	150.0	0.00	0.00	150.0	0.0	0.0	0.00	0.000	0.0	
3	250.0	1.00	190.00	250.0	-0.9	-0.2	1.00	190.000	0.8	
4	800.5	9.21	172.81	797.9	-49.4	4.5	1.50	-19.230	49.6	
5	5755.2	9.21	172.81	5688.8	-836.0	103.8	0.00	0.000	842.4	
6	6369.1	0.00	0.00	6300.0	-884.8	110.0	1.50	180.000	891.7	Top Gas (25' Radius) SR 313-9
7	8824.1	0.00	0.00	8755.0	-884.8	110.0	0.00	0.000	891.7	

TVD	MD	Inc	Azi	+N/-S	+E/-W	Vsect	Departure	Annotation
150.0	150.0	0.00	0.00	0.0	0.0	0.0	0.0	Start Build 1.00
250.0	250.0	1.00	190.00	-0.9	-0.2	0.8	0.9	Start Build/Turn DLS 1.50 TFO -19.230
797.9	800.5	9.21	172.81	-49.4	4.5	49.6	49.8	Hold 9.21° Inclination
5688.8	5755.2	9.21	172.81	-836.0	103.8	842.4	842.7	Start Drop -1.50
6300.0	6369.1	0.00	0.00	-884.8	110.0	891.7	891.9	Vertical
8755.0	8824.1	0.00	0.00	-884.8	110.0	891.7	891.9	TD at 8824.1

PICEANCE VLY NAD 83

RU 09-07S-094W

SR 12-9 Pad

SR 313-9 - Slot A6

Wellbore #1

Plan: Plan #4 3Feb10 sam

Standard Planning Report - Geographic

03 February, 2010

Williams

Planning Report - Geographic

Database:	Compass R5000 WIN AUTH	Local Co-ordinate Reference:	Well SR 313-9 - Slot A6
Company:	PICEANCE VLY NAD 83	TVD Reference:	Corrected KB @ 6599.0usft (E Rig (24') kjs)
Project:	RU 09-07S-094W	MD Reference:	Corrected KB @ 6599.0usft (E Rig (24') kjs)
Site:	SR 12-9 Pad	North Reference:	True
Well:	SR 313-9	Survey Calculation Method:	Minimum Curvature
Wellbore:	Wellbore #1		
Design:	Plan #4 3Feb10 sam		

Project	RU 09-07S-094W, Garfield County, CO		
Map System:	US State Plane 1983	System Datum:	Mean Sea Level
Geo Datum:	North American Datum 1983		
Map Zone:	Colorado Central Zone		Using geodetic scale factor

Site	SR 12-9 Pad				
Site Position:	Northing:	1,599,774.90 usft	Latitude:	39° 27' 20.163 N	
From:	Easting:	2,322,710.40 usft	Longitude:	107° 53' 56.155 W	
Position Uncertainty:	0.0 usft	Slot Radius:	13.200 in	Grid Convergence:	-1.513 °

Well	SR 313-9 - Slot A6					
Well Position	+N/-S	0.0 usft	Northing:	1,599,780.50 usft	Latitude:	39° 27' 20.209 N
	+E/-W	0.0 usft	Easting:	2,322,673.30 usft	Longitude:	107° 53' 56.630 W
Position Uncertainty	0.0 usft	Wellhead Elevation:		Ground Level:	6,575.0 usft	

Wellbore	Wellbore #1				
Magnetics	Model Name	Sample Date	Declination	Dip Angle	Field Strength
			(°)	(°)	(nT)
	IGRF2005-10	1/10/2008	10.726	65.825	52,603

Design	Plan #4 3Feb10 sam			
Audit Notes:				
Version:	Phase:	PROTOTYPE	Tie On Depth:	0.0
Vertical Section:	Depth From (TVD)	+N/-S	+E/-W	Direction
	(usft)	(usft)	(usft)	(°)
	0.0	0.0	0.0	172.91

Plan Sections										
Measured Depth (usft)	Inclination (°)	Azimuth (°)	Vertical Depth (usft)	+N/-S (usft)	+E/-W (usft)	Dogleg Rate (°/100usft)	Build Rate (°/100usft)	Turn Rate (°/100usft)	TFO (°)	Target
0.0	0.00	0.00	0.0	0.0	0.0	0.00	0.00	0.00	0.000	
150.0	0.00	0.00	150.0	0.0	0.0	0.00	0.00	0.00	0.000	
250.0	1.00	190.00	250.0	-0.9	-0.2	1.00	1.00	0.00	190.000	
800.5	9.21	172.81	797.9	-49.4	4.5	1.50	1.49	-3.12	-19.230	
5,755.2	9.21	172.81	5,688.8	-836.0	103.8	0.00	0.00	0.00	0.000	
6,369.1	0.00	0.00	6,300.0	-884.8	110.0	1.50	-1.50	0.00	180.000	Top Gas (25' Radius)
8,824.1	0.00	0.00	8,755.0	-884.8	110.0	0.00	0.00	0.00	0.000	

Williams

Planning Report - Geographic

Database:	Compass R5000 WIN AUTH	Local Co-ordinate Reference:	Well SR 313-9 - Slot A6
Company:	PICEANCE VLY NAD 83	TVD Reference:	Corrected KB @ 6599.0usft (E Rig (24') kjs)
Project:	RU 09-07S-094W	MD Reference:	Corrected KB @ 6599.0usft (E Rig (24') kjs)
Site:	SR 12-9 Pad	North Reference:	True
Well:	SR 313-9	Survey Calculation Method:	Minimum Curvature
Wellbore:	Wellbore #1		
Design:	Plan #4 3Feb10 sam		

Planned Survey

Measured Depth (usft)	Inclination (°)	Azimuth (°)	Vertical Depth (usft)	+N/-S (usft)	+E/-W (usft)	Map Northing (usft)	Map Easting (usft)	Latitude	Longitude
0.0	0.00	0.00	0.0	0.0	0.0	1,599,780.50	2,322,673.30	39° 27' 20.209 N	107° 53' 56.630 W
150.0	0.00	0.00	150.0	0.0	0.0	1,599,780.50	2,322,673.30	39° 27' 20.209 N	107° 53' 56.630 W
250.0	1.00	190.00	250.0	-0.9	-0.2	1,599,779.64	2,322,673.13	39° 27' 20.200 N	107° 53' 56.632 W
800.5	9.21	172.81	797.9	-49.4	4.5	1,599,731.02	2,322,676.54	39° 27' 19.721 N	107° 53' 56.572 W
5,755.2	9.21	172.81	5,688.8	-836.0	103.8	1,598,942.08	2,322,755.03	39° 27' 11.946 N	107° 53' 55.306 W
6,369.1	0.00	0.00	6,300.0	-884.8	110.0	1,598,893.10	2,322,759.90	39° 27' 11.464 N	107° 53' 55.228 W
8,824.1	0.00	0.00	8,755.0	-884.8	110.0	1,598,893.10	2,322,759.90	39° 27' 11.464 N	107° 53' 55.228 W

Design Targets

Target Name	Dip Angle (°)	Dip Dir. (°)	TVD (usft)	+N/-S (usft)	+E/-W (usft)	Northing (usft)	Easting (usft)	Latitude	Longitude
- hit/miss target									
- Shape									
Top Gas (25' Radius) SF	0.00	0.00	6,300.0	-884.8	110.0	1,598,893.10	2,322,759.90	39° 27' 11.464 N	107° 53' 55.228 W
- plan hits target center									
- Circle (radius 25.0)									

Casing Points

Measured Depth (usft)	Vertical Depth (usft)	Name	Casing Diameter (in)	Hole Diameter (in)
1,106.6	1,100.0	9 5/8"	9.625	12.250

Formations

Measured Depth (usft)	Vertical Depth (usft)	Name	Lithology	Dip (°)	Dip Direction (°)
2,899.7	2,870.0	Top of "G" Sand			
3,001.0	2,970.0	Base of "G" Sand			
5,219.6	5,160.0	Mesaverde			
6,369.1	6,300.0	Approx. Top Gas			
7,799.1	7,730.0	Cameo Coals			
8,544.1	8,475.0	Coal D			
8,674.1	8,605.0	Base L. Cameo Pay			
8,769.1	8,700.0	Rollins SS			
8,824.1	8,755.0	TD		0.000	

Plan Annotations

Measured Depth (usft)	Vertical Depth (usft)	+N/-S (usft)	+E/-W (usft)	Comment
150.0	150.0	0.0	0.0	Start Build 1.00
250.0	250.0	-0.9	-0.2	Start Build/Turn DLS 1.50 TFO -19.230
800.5	797.9	-49.4	4.5	Hold 9.21 Inclination
5,755.2	5,688.8	-836.0	103.8	Start Drop -1.50
6,369.1	6,300.0	-884.8	110.0	Vertical
8,824.1	8,755.0	-884.8	110.0	TD at 8824.1