

PETROLEUM DEVELOPMENT CORP.

SHEET 5 of 9

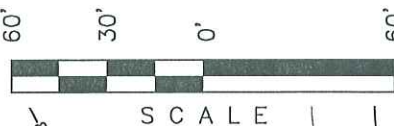
RECLAMATION PAD & PROD. EQUIPMENT LAYOUT FOR

PUCKETT #22A-36D, #21C-36D, #21B-36D,

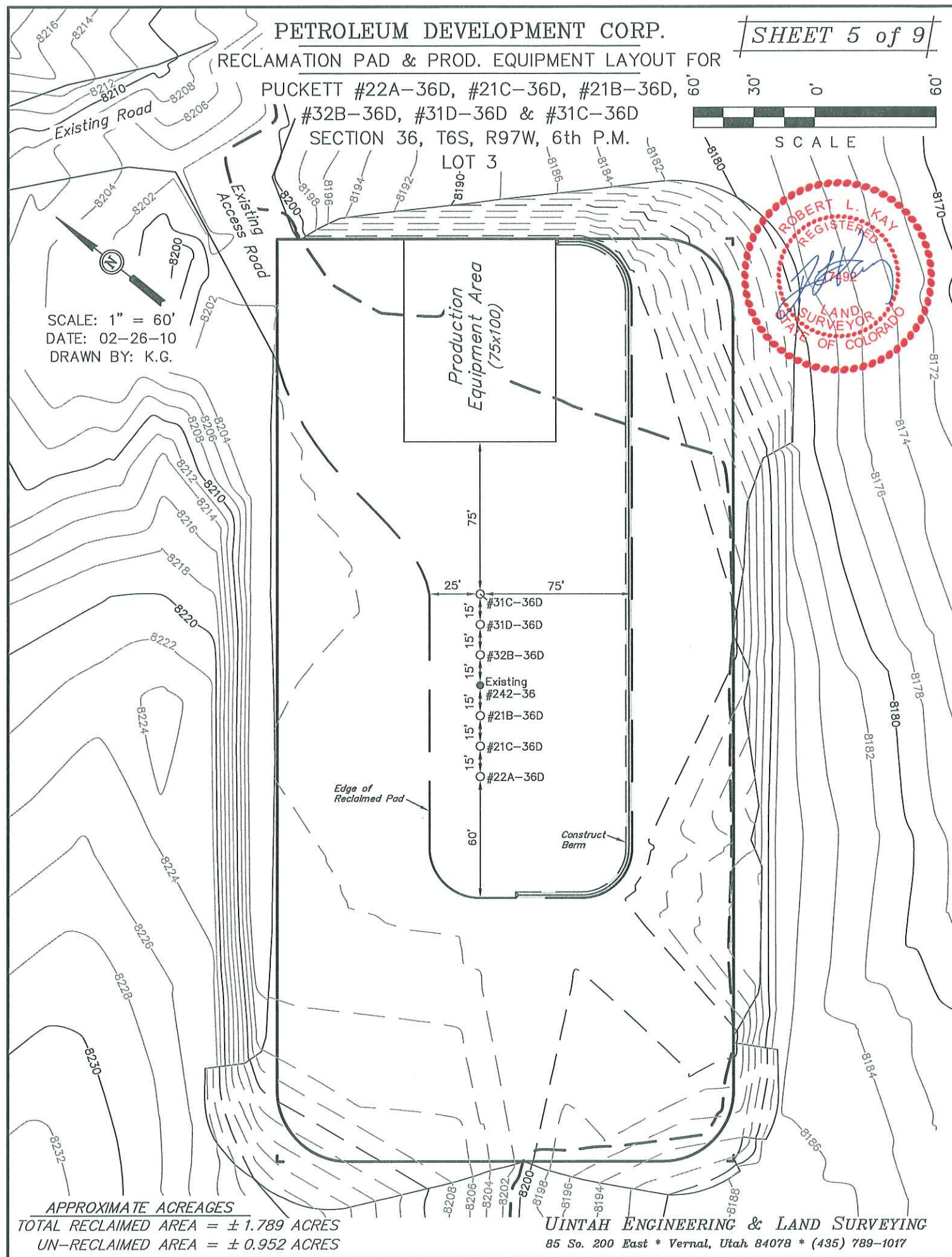
#32B-36D, #31D-36D & #31C-36D

SECTION 36, T6S, R97W, 6th P.M.

LOT 3



SCALE: 1" = 60'
DATE: 02-26-10
DRAWN BY: K.G.



APPROXIMATE ACREAGES

TOTAL RECLAIMED AREA = ± 1.789 ACRES

UN-RECLAIMED AREA = ± 0.952 ACRES

UINTAH ENGINEERING & LAND SURVEYING

85 So. 200 East * Vernal, Utah 84078 * (435) 789-1017

PETROLEUM DEVELOPMENT CORP.

SHEET 6 of 9

FINAL RECLAMATION PAD FOR

PUCKETT #22A-36D, #21C-36D, #21B-36D,
#32B-36D, #31D-36D & #31C-36D
SECTION 36, T6S, R97W, 6th P.M.

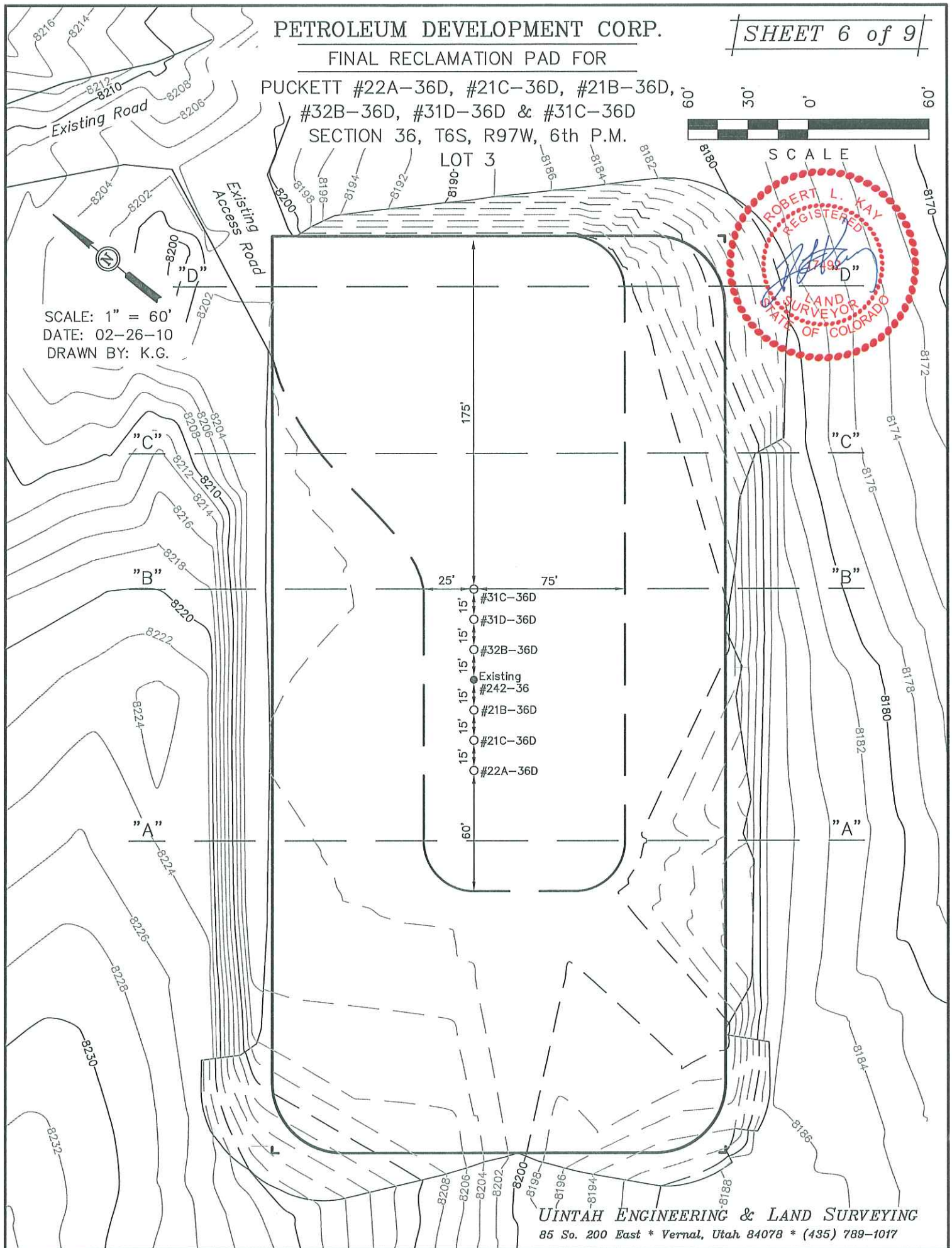
LOT 3



SCALE



SCALE: 1" = 60'
DATE: 02-26-10
DRAWN BY: K.G.



1" = 40'
X-Section
Scale
1" = 100'

DATE: 02-26-10
DRAWN BY: K.G.

PETROLEUM DEVELOPMENT CORP.
FINAL RECLAMATION CROSS SECTIONS FOR
PUCKETT #22A-36D, #21C-36D, #21B-36D,
#32B-36D, #31D-36D & #31C-36D
SECTION 36, T6S, R97W, 6th P.M.
LOT 3

SHEET 7 of 9

