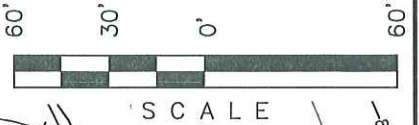


# PETROLEUM DEVELOPMENT CORP.

SHEET 2 of 9

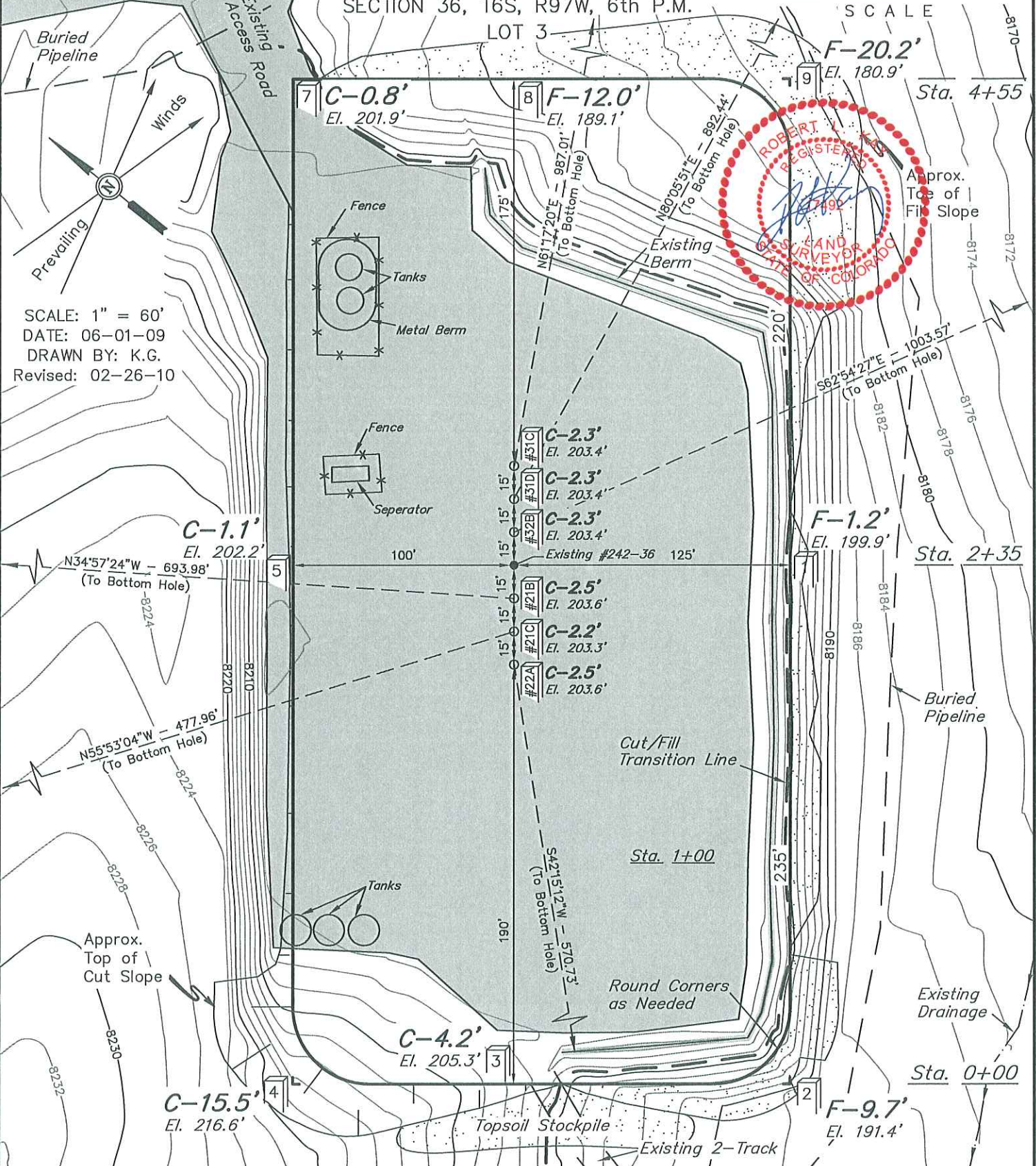
## CONSTRUCTION LAYOUT FOR

PUCKETT #22A-36D, #21C-36D, #21B-36D, #32B-36D, #31D-36D & #31C-36D  
SECTION 36, T6S, R97W, 6th P.M.



LOT 3

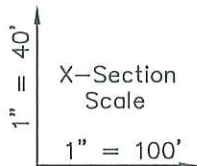
SCALE: 1" = 60'  
DATE: 06-01-09  
DRAWN BY: K.G.  
Revised: 02-26-10



Elev. Ungraded Ground At #21B Loc. Stake = **8203.6'**  
FINISHED GRADE ELEV. AT #21B LOC. STAKE = **8201.1'**

UINTAH ENGINEERING & LAND SURVEYING  
85 So. 200 East \* Vernal, Utah 84078 \* (435) 789-1017

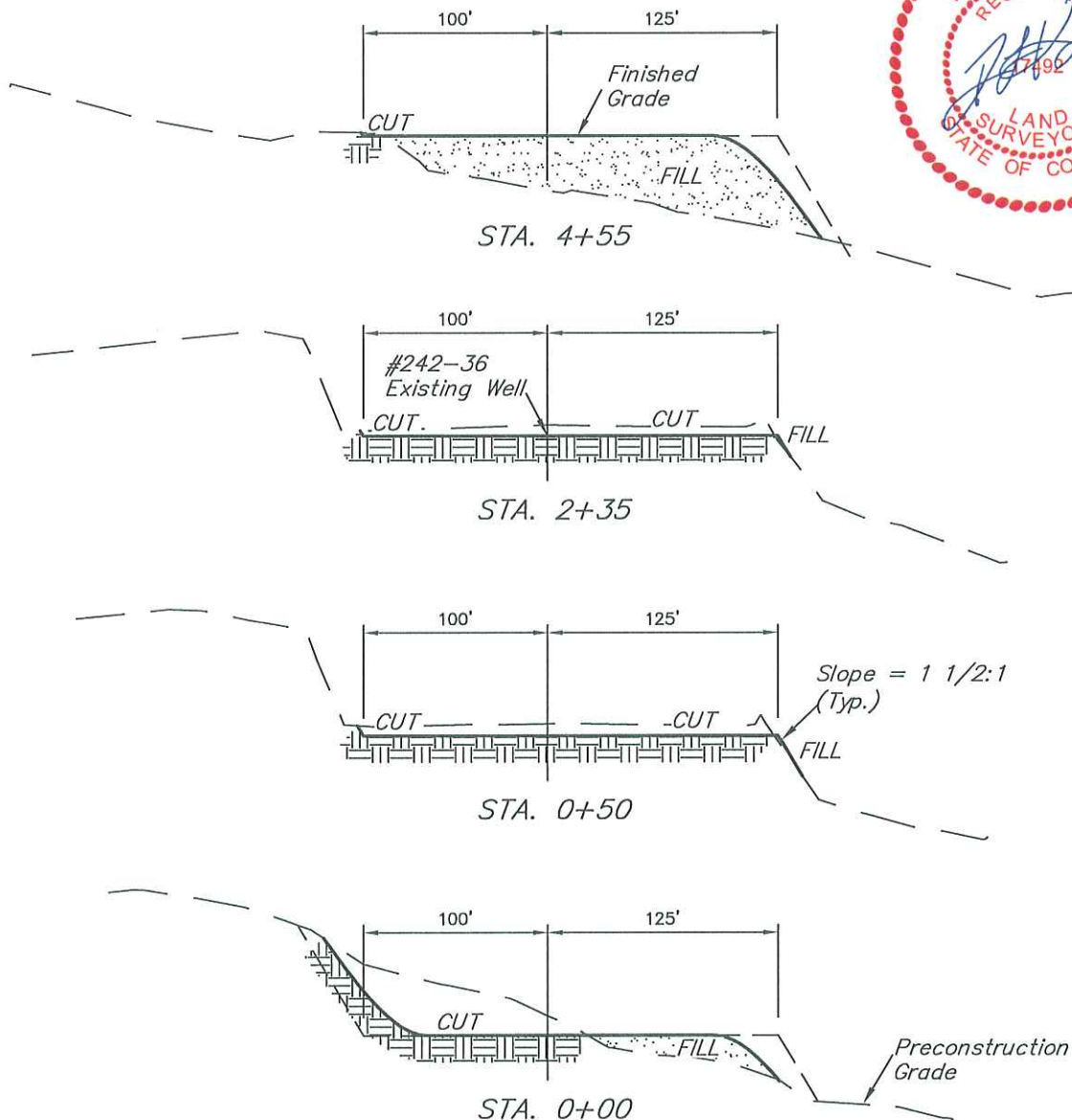




DATE: 06-01-09  
DRAWN BY: K.G.  
Revised: 02-26-10

PETROLEUM DEVELOPMENT CORP.  
CONSTRUCTION LAYOUT CROSS SECTION FOR  
PUCKETT #22A-36D, #21C-36D, #21B-36D,  
#32B-36D, #31D-36D & #31C-36D  
SECTION 36, T6S, R97W, 6th P.M.  
LOT 3

SHEET 3 of 9



APPROXIMATE ACREAGES

EXISTING DISTURBANCE WITHIN PROPOSED WELL SITE =  $\pm 1.663$  ACRES  
REMAINING PROPOSED WELL SITE DISTURBANCE =  $\pm 1.135$  ACRES  
TOTAL =  $\pm 2.798$  ACRES

\* NOTE:  
FILL QUANTITY INCLUDES  
5% FOR COMPACTION

APPROXIMATE YARDAGES

(6") Topsoil Stripping = 560 Cu. Yds.  
(New Construction Only)  
Remaining Location = 7,940 Cu. Yds.  
TOTAL CUT = 8,500 CU.YDS.  
FILL = 7,940 CU.YDS.

EXCESS MATERIAL = 560 Cu. Yds.  
Topsoil = 560 Cu. Yds.  
EXCESS UNBALANCE = 0 Cu. Yds.  
(After Interim Rehabilitation)

UINTAH ENGINEERING & LAND SURVEYING  
85 So. 200 East \* Vernal, Utah 84078 \* (435) 789-1017