

PETROLEUM DEVELOPMENT CORP.
PUCKETT #22A-36D, #21C-36D, #21B-36D,
#32B-36, #31D-36D & #31C-36D
LOCATED IN GARFIELD COUNTY, COLORADO
SECTION 36, T6S, R97W, 6th P.M.

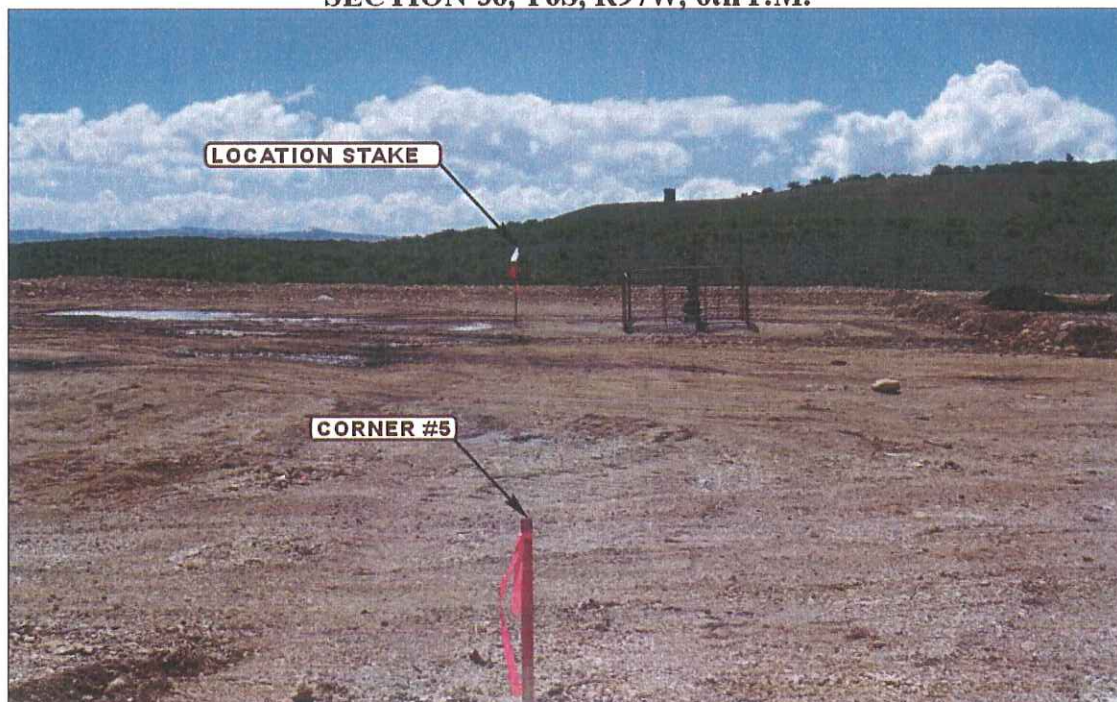


PHOTO: VIEW FROM CORNER #5 TO LOCATION STAKE

CAMERA ANGLE: SOUTHEASTERLY

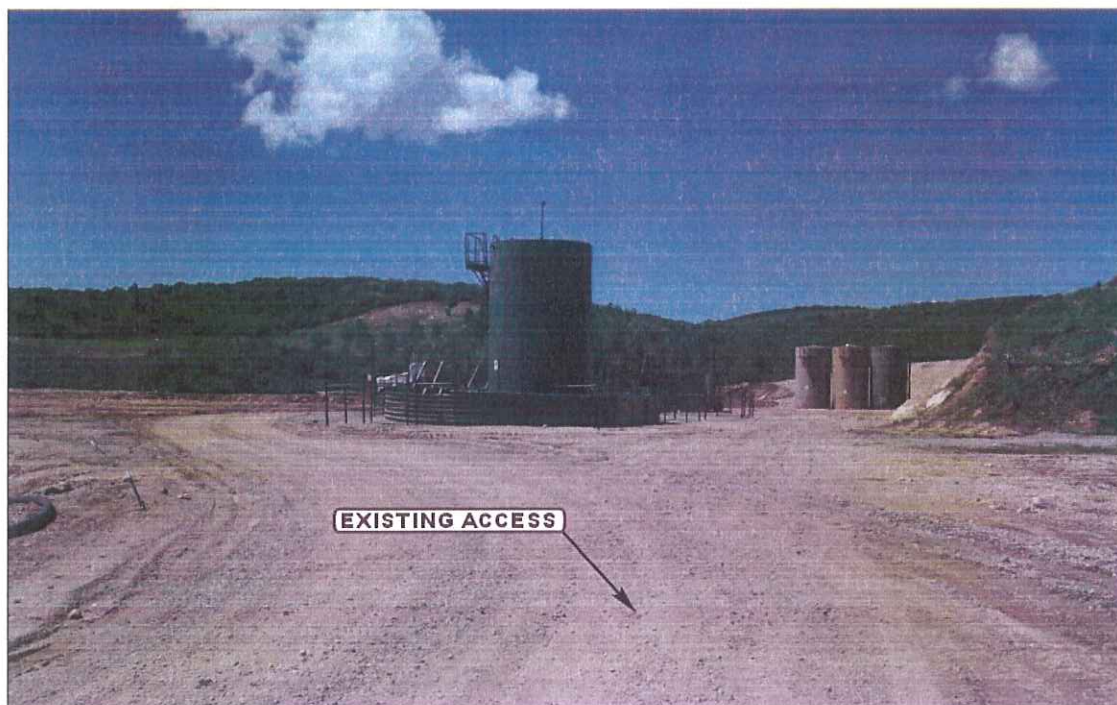


PHOTO: VIEW OF EXISTING ACCESS

CAMERA ANGLE: SOUTHERLY



- Since 1964 -



Uintah Engineering & Land Surveying
 85 South 200 East Vernal, Utah 84078
 (435) 789-1017 * FAX (435) 789-1813

LOCATION PHOTOS

6
MONTH

5
DAY

09
YEAR

PHOTO

P1

TAKEN BY: D.C.

DRAWN BY: J.L.G.

REV: J.H. 03-01-10

PETROLEUM DEVELOPMENT CORP.
PUCKETT #22A-36D, #21C-36D, #21B-36D,
#32B-36, #31D-36D & #31C-36D
LOCATED IN GARFIELD COUNTY, COLORADO
SECTION 36, T6S, R97W, 6th P.M.



PHOTO: VIEW OF LOCATION STAKE

CAMERA ANGLE: NORTHERLY



PHOTO: VIEW LOCATION STAKE

CAMERA ANGLE: EASTERLY



- Since 1964 -

UELS

Uintah Engineering & Land Surveying
 85 South 200 East Vernal, Utah 84078
 (435) 789-1017 * FAX (435) 789-1813

LOCATION PHOTOS

6 **5** **09**
 MONTH DAY YEAR

TAKEN BY: D.C.

DRAWN BY: J.L.G.

REV: J.H. 03-01-10

PHOTO
P2

PETROLEUM DEVELOPMENT CORP.
PUCKETT #22A-36D, #21C-36D, #21B-36D,
#32B-36, #31D-36D & #31C-36D
LOCATED IN GARFIELD COUNTY, COLORADO
SECTION 36, T6S, R97W, 6th P.M.



PHOTO: VIEW FROM OF LOCATION STAKE

CAMERA ANGLE: SOUTHERLY

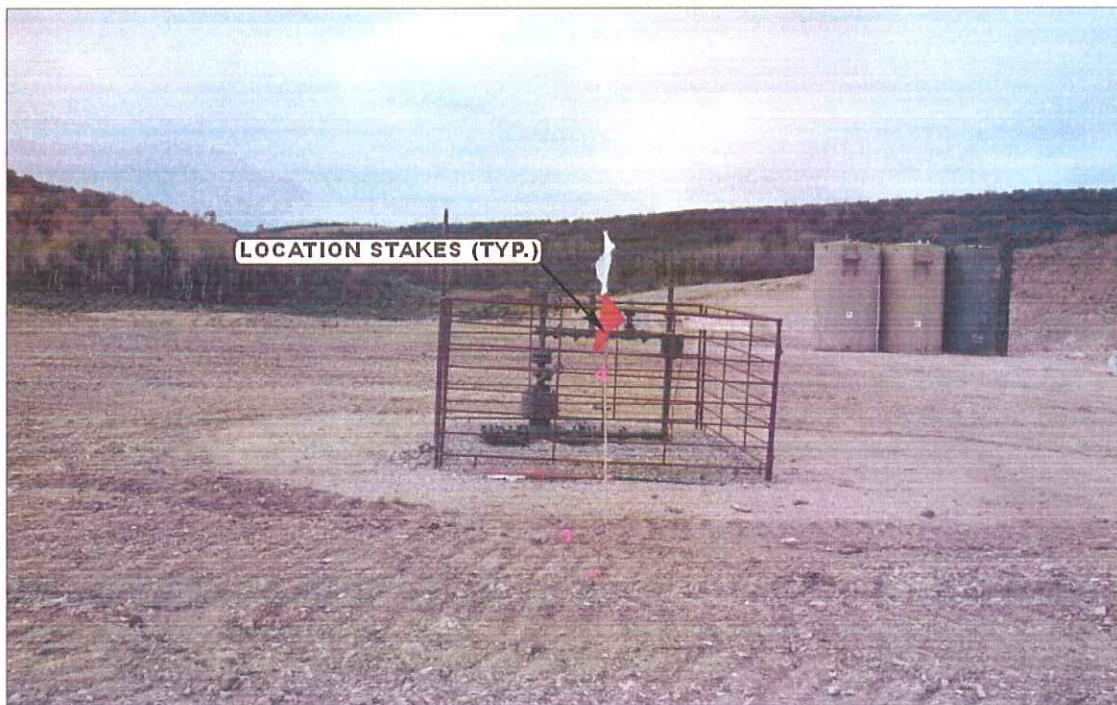


PHOTO: VIEW OF LOCATION STAKE

CAMERA ANGLE: WESTERLY



- Since 1964 -

UELS

Uintah Engineering & Land Surveying
 85 South 200 East Vernal, Utah 84078
 (435) 789-1017 * FAX (435) 789-1813

LOCATION PHOTOS

6
MONTH

5
DAY

09
YEAR

PHOTO
P3

TAKEN BY: D.C.

DRAWN BY: J.L.G.

REV: J.H. 03-01-10