

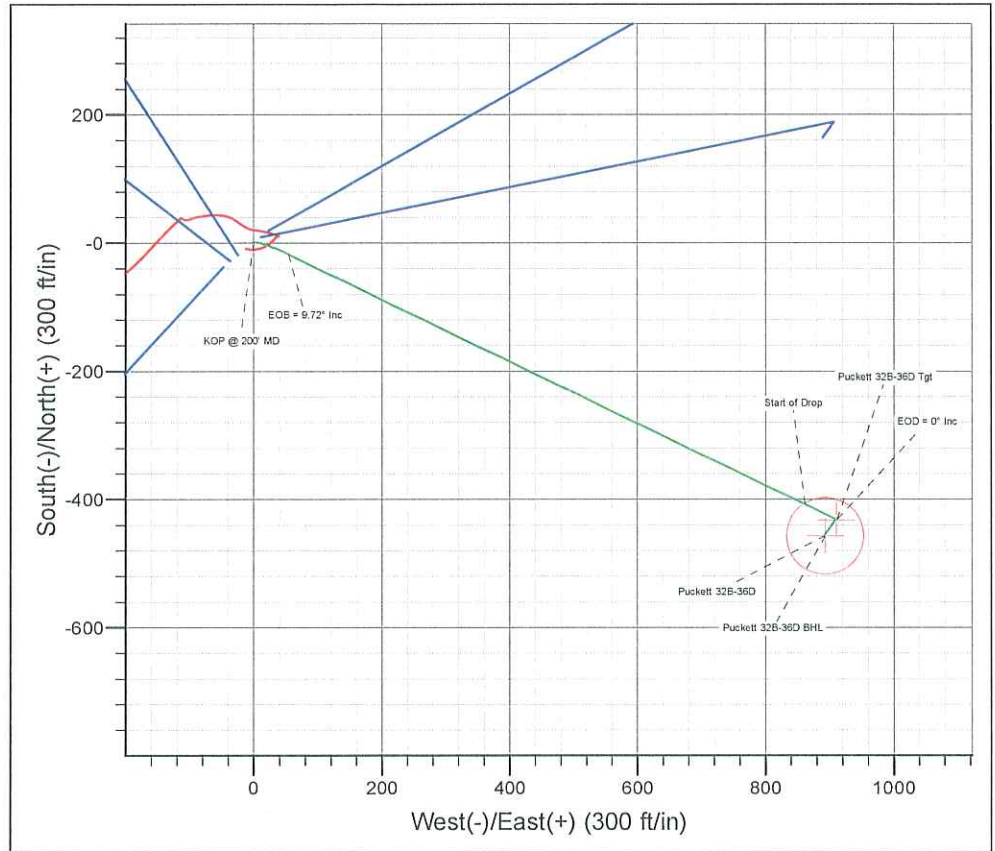
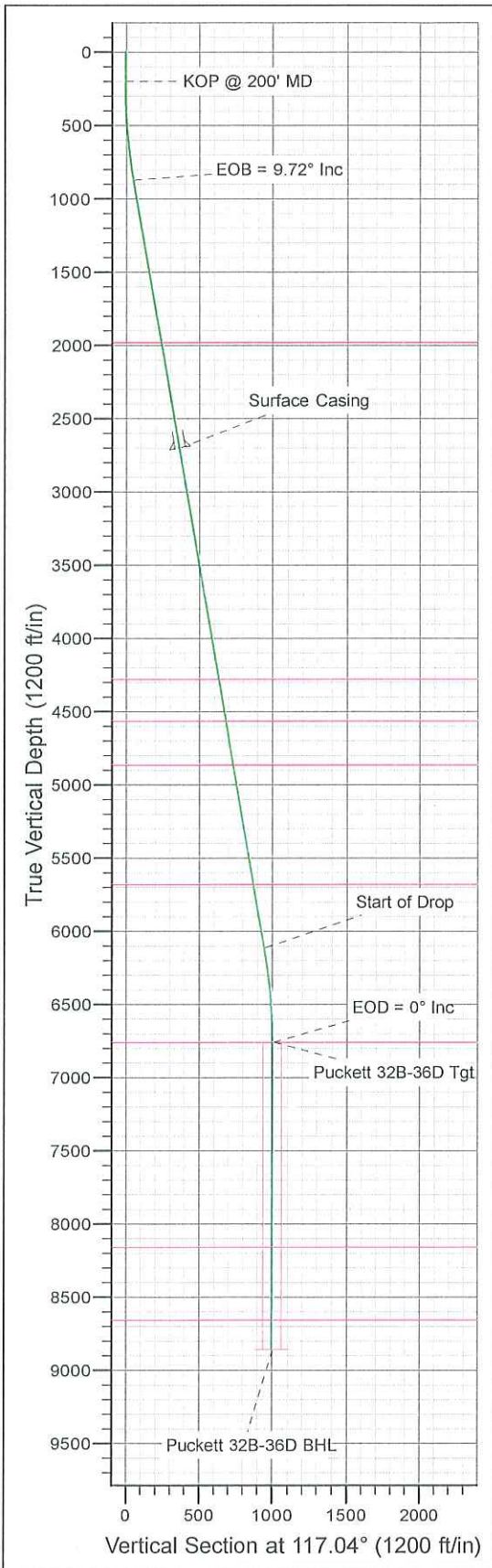
Project: Mesa
 Site: NESW Sec 36-T6S-R97W
 Well: Puckett 32B-36D
 Wellbore: DD
 Design: Plan #1



Azimuths to True North
 Magnetic North: 10.57°
 Magnetic Field
 Strength: 52314.0nT
 Dip Angle: 65.73°
 Date: 2010/05/07
 Model: IGRF2010-14

WELL DETAILS: Puckett 32B-36D

+N/-S 0.0 +E/-W 0.0 Northing 1612106.65 Ground Level: 8203.0 Easting 2246611.95 Latitude 39° 29' 1.020 N Longitude 108° 10' 10.580 W Slot



ANNOTATIONS

TVD	MD	Annotation
200.0	200.0	KOP @ 200' MD
872.4	875.6	EOB = 9.72° Inc
6112.3	6191.8	Start of Drop
6757.0	6839.6	EOD = 0° Inc
8857.0	8939.8	TD = 8939.8' MD

FORMATION TOP DETAILS

TVDPath	MDPath	Formation
1977.0	1996.3	Wasatch
4277.0	4329.8	Wasatch "G" Sand
4562.0	4618.9	Fort Union
4862.0	4923.3	Base Fort Union
5677.0	5750.1	Mesaverde/Williams Fk
6757.0	6839.6	Top Gas Cell
8157.0	8239.7	Cameo
8657.0	8739.8	Rollins

ON DETAILS

Sec	MD	Inc	Azi	TVD	+N/-S	+E/-W	DLeg	TFace	VSec	Target
1	0.0	0.00	0.00	0.0	0.0	0.0	0.00	0.00	0.0	
2	200.0	0.00	0.00	200.0	0.0	0.0	0.00	0.00	0.0	
3	400.0	3.00	90.00	399.9	0.0	5.2	1.50	90.00	4.7	
4	875.6	9.72	115.79	872.4	-17.5	53.9	1.50	36.25	55.9	
5	6191.8	9.72	115.79	6112.4	-407.9	861.7	0.00	0.00	952.9	
6	6839.6	0.00	0.00	6757.0	-431.7	911.0	1.50	180.00	1007.7	Puckett 32B-36D Tgt
7	7197.4	0.89	214.96	7114.9	-434.0	909.4	0.25	214.96	1007.3	
8	8939.8	0.89	214.96	8857.0	-456.3	893.8	0.00	0.00	1003.5	Puckett 32B-36D BHL

WELLBORE TARGET DETAILS (LAT/LONG)

Name	TVD	+N/-S	+E/-W	Latitude	Longitude	Shape
Puckett 32B-36D Tgt	6757.0	-431.7	911.0	39° 28' 56.753 N	108° 9' 58.961 W	Point
Puckett 32B-36D BHL	8857.0	-456.3	893.8	39° 28' 56.510 N	108° 9' 59.180 W	Circle (Radius: 60.0)

CASING DETAILS

TVD	MD	Name	Size
2700.0	2729.8	Surface Casing	

Plan: Plan #1 (Puckett 32B-36D/DD)

Created By: Jon Schweigert Date: 10/03, May 11 2010
 Checked: _____ Date: _____
 Reviewed: _____ Date: _____
 Approved: _____ Date: _____



Database:	RMR1 Database	Local Co-ordinate Reference:	Well Puckett 32B-36D
Company:	Petroleum Development Corp.	TVD Reference:	Puckett 32B-36D KBE @ 8227.0ft (H&P 318)
Project:	Mesa	MD Reference:	Puckett 32B-36D KBE @ 8227.0ft (H&P 318)
Site:	NESW Sec 36-T6S-R97W	North Reference:	True
Well:	Puckett 32B-36D	Survey Calculation Method:	Minimum Curvature
Wellbore:	DD		
Design:	Plan #1		

Project	Mesa		
Map System:	US State Plane 1983	System Datum:	Mean Sea Level
Geo Datum:	North American Datum 1983		
Map Zone:	Colorado Central Zone		

Site	NESW Sec 36-T6S-R97W				
Site Position:		Northing:	1,612,095.79 ft	Latitude:	39° 29' 0.904 N
From:	Lat/Long	Easting:	2,246,581.45 ft	Longitude:	108° 10' 10.965 W
Position Uncertainty:	0.0 ft	Slot Radius:		Grid Convergence:	-1.68 °

Well	Puckett 32B-36D					
Well Position	+N/-S	11.7 ft	Northing:	1,612,106.65 ft	Latitude:	39° 29' 1.020 N
	+E/-W	30.2 ft	Easting:	2,246,611.95 ft	Longitude:	108° 10' 10.580 W
Position Uncertainty		0.0 ft	Wellhead Elevation:		Ground Level:	8,203.0 ft

Wellbore	DD				
Magnetics	Model Name	Sample Date	Declination (°)	Dip Angle (°)	Field Strength (nT)
	IGRF2010-14	2010/05/07	10.57	65.73	52,314

Design	Plan #1				
Audit Notes:					
Version:	Phase:	PROTOTYPE	Tie On Depth:	0.0	
Vertical Section:	Depth From (TVD) (ft)	+N/-S (ft)	+E/-W (ft)	Direction (°)	
	0.0	0.0	0.0	117.04	

Plan Sections										
Measured Depth (ft)	Inclination (°)	Azimuth (°)	Vertical Depth (ft)	+N/-S (ft)	+E/-W (ft)	Dogleg Rate (°/100ft)	Build Rate (°/100ft)	Turn Rate (°/100ft)	TFO (°)	Target
0.0	0.00	0.00	0.0	0.0	0.0	0.00	0.00	0.00	0.00	
200.0	0.00	0.00	200.0	0.0	0.0	0.00	0.00	0.00	0.00	
400.0	3.00	90.00	399.9	0.0	5.2	1.50	1.50	0.00	90.00	
875.6	9.72	115.79	872.4	-17.5	53.9	1.50	1.41	5.42	36.25	
6,191.8	9.72	115.79	6,112.4	-407.9	861.7	0.00	0.00	0.00	0.00	
6,839.6	0.00	0.00	6,757.0	-431.7	911.0	1.50	-1.50	0.00	180.00	Puckett 32B-36D Tgt
7,197.4	0.89	214.96	7,114.9	-434.0	909.4	0.25	0.25	-40.53	214.96	
8,939.8	0.89	214.96	8,857.0	-456.3	893.8	0.00	0.00	0.00	0.00	Puckett 32B-36D BHL

Database:	RMR1 Database	Local Co-ordinate Reference:	Well Puckett 32B-36D
Company:	Petroleum Development Corp.	TVD Reference:	Puckett 32B-36D KBE @ 8227.0ft (H&P 318)
Project:	Mesa	MD Reference:	Puckett 32B-36D KBE @ 8227.0ft (H&P 318)
Site:	NESW Sec 36-T6S-R97W	North Reference:	True
Well:	Puckett 32B-36D	Survey Calculation Method:	Minimum Curvature
Wellbore:	DD		
Design:	Plan #1		

Planned Survey											
Measured Depth (ft)	Inclination (°)	Azimuth (°)	Vertical Depth (ft)	Subsea Depth (ft)	+N/-S (ft)	+E/-W (ft)	Vertical Section (ft)	Dogleg Rate (°/100ft)	Build Rate (°/100ft)	Turn Rate (°/100ft)	
0.0	0.00	0.00	0.0	-8,227.0	0.0	0.0	0.0	0.00	0.00	0.00	
100.0	0.00	0.00	100.0	-8,127.0	0.0	0.0	0.0	0.00	0.00	0.00	
KOP @ 200' MD											
200.0	0.00	0.00	200.0	-8,027.0	0.0	0.0	0.0	0.00	0.00	0.00	
300.0	1.50	90.00	300.0	-7,927.0	0.0	1.3	1.2	1.50	1.50	0.00	
400.0	3.00	90.00	399.9	-7,827.1	0.0	5.2	4.7	1.50	1.50	0.00	
500.0	4.30	101.91	499.7	-7,727.3	-0.8	11.5	10.6	1.50	1.30	11.91	
600.0	5.70	108.15	599.3	-7,627.7	-3.1	19.9	19.1	1.50	1.40	6.24	
700.0	7.14	111.91	698.7	-7,528.3	-7.0	30.4	30.2	1.50	1.44	3.76	
800.0	8.60	114.40	797.7	-7,429.3	-12.4	43.0	43.9	1.50	1.46	2.50	
EOB = 9.72° Inc											
875.6	9.72	115.79	872.4	-7,354.6	-17.5	53.9	55.9	1.50	1.47	1.84	
900.0	9.72	115.79	896.4	-7,330.6	-19.3	57.6	60.1	0.00	0.00	0.00	
1,000.0	9.72	115.79	995.0	-7,232.0	-26.6	72.8	76.9	0.00	0.00	0.00	
1,100.0	9.72	115.79	1,093.6	-7,133.4	-34.0	88.0	93.8	0.00	0.00	0.00	
1,200.0	9.72	115.79	1,192.1	-7,034.9	-41.3	103.2	110.7	0.00	0.00	0.00	
1,300.0	9.72	115.79	1,290.7	-6,936.3	-48.6	118.4	127.5	0.00	0.00	0.00	
1,400.0	9.72	115.79	1,389.3	-6,837.7	-56.0	133.6	144.4	0.00	0.00	0.00	
1,500.0	9.72	115.79	1,487.8	-6,739.2	-63.3	148.8	161.3	0.00	0.00	0.00	
1,600.0	9.72	115.79	1,586.4	-6,640.6	-70.7	163.9	178.2	0.00	0.00	0.00	
1,700.0	9.72	115.79	1,685.0	-6,542.0	-78.0	179.1	195.0	0.00	0.00	0.00	
1,800.0	9.72	115.79	1,783.5	-6,443.5	-85.4	194.3	211.9	0.00	0.00	0.00	
1,900.0	9.72	115.79	1,882.1	-6,344.9	-92.7	209.5	228.8	0.00	0.00	0.00	
Wasatch											
1,996.3	9.72	115.79	1,977.0	-6,250.0	-99.8	224.2	245.0	0.00	0.00	0.00	
2,000.0	9.72	115.79	1,980.7	-6,246.3	-100.1	224.7	245.6	0.00	0.00	0.00	
2,100.0	9.72	115.79	2,079.2	-6,147.8	-107.4	239.9	262.5	0.00	0.00	0.00	
2,200.0	9.72	115.79	2,177.8	-6,049.2	-114.7	255.1	279.4	0.00	0.00	0.00	
2,300.0	9.72	115.79	2,276.4	-5,950.6	-122.1	270.3	296.3	0.00	0.00	0.00	
2,400.0	9.72	115.79	2,374.9	-5,852.1	-129.4	285.5	313.1	0.00	0.00	0.00	
2,500.0	9.72	115.79	2,473.5	-5,753.5	-136.8	300.7	330.0	0.00	0.00	0.00	
2,600.0	9.72	115.79	2,572.0	-5,655.0	-144.1	315.9	346.9	0.00	0.00	0.00	
2,700.0	9.72	115.79	2,670.6	-5,556.4	-151.5	331.1	363.8	0.00	0.00	0.00	
Surface Casing											
2,729.8	9.72	115.79	2,700.0	-5,527.0	-153.6	335.6	368.8	0.00	0.00	0.00	
2,800.0	9.72	115.79	2,769.2	-5,457.8	-158.8	346.3	380.6	0.00	0.00	0.00	
2,900.0	9.72	115.79	2,867.7	-5,359.3	-166.1	361.5	397.5	0.00	0.00	0.00	
3,000.0	9.72	115.79	2,966.3	-5,260.7	-173.5	376.7	414.4	0.00	0.00	0.00	
3,100.0	9.72	115.79	3,064.9	-5,162.1	-180.8	391.9	431.2	0.00	0.00	0.00	
3,200.0	9.72	115.79	3,163.4	-5,063.6	-188.2	407.1	448.1	0.00	0.00	0.00	
3,300.0	9.72	115.79	3,262.0	-4,965.0	-195.5	422.3	465.0	0.00	0.00	0.00	
3,400.0	9.72	115.79	3,360.6	-4,866.4	-202.9	437.5	481.9	0.00	0.00	0.00	
3,500.0	9.72	115.79	3,459.1	-4,767.9	-210.2	452.6	498.7	0.00	0.00	0.00	
3,600.0	9.72	115.79	3,557.7	-4,669.3	-217.5	467.8	515.6	0.00	0.00	0.00	
3,700.0	9.72	115.79	3,656.3	-4,570.7	-224.9	483.0	532.5	0.00	0.00	0.00	
3,800.0	9.72	115.79	3,754.8	-4,472.2	-232.2	498.2	549.3	0.00	0.00	0.00	
3,900.0	9.72	115.79	3,853.4	-4,373.6	-239.6	513.4	566.2	0.00	0.00	0.00	
4,000.0	9.72	115.79	3,952.0	-4,275.0	-246.9	528.6	583.1	0.00	0.00	0.00	
4,100.0	9.72	115.79	4,050.5	-4,176.5	-254.3	543.8	600.0	0.00	0.00	0.00	
4,200.0	9.72	115.79	4,149.1	-4,077.9	-261.6	559.0	616.8	0.00	0.00	0.00	
4,300.0	9.72	115.79	4,247.7	-3,979.3	-268.9	574.2	633.7	0.00	0.00	0.00	
Wasatch "G" Sand											
4,329.8	9.72	115.79	4,277.0	-3,950.0	-271.1	578.7	638.7	0.00	0.00	0.00	
4,400.0	9.72	115.79	4,346.2	-3,880.8	-276.3	589.4	650.6	0.00	0.00	0.00	

Database:	RMR1 Database	Local Co-ordinate Reference:	Well Puckett 32B-36D
Company:	Petroleum Development Corp.	TVD Reference:	Puckett 32B-36D KBE @ 8227.0ft (H&P 318)
Project:	Mesa	MD Reference:	Puckett 32B-36D KBE @ 8227.0ft (H&P 318)
Site:	NESW Sec 36-T6S-R97W	North Reference:	True
Well:	Puckett 32B-36D	Survey Calculation Method:	Minimum Curvature
Wellbore:	DD		
Design:	Plan #1		

Planned Survey											
Measured Depth (ft)	Inclination (°)	Azimuth (°)	Vertical Depth (ft)	Subsea Depth (ft)	+N/-S (ft)	+E/-W (ft)	Vertical Section (ft)	Dogleg Rate (°/100ft)	Build Rate (°/100ft)	Turn Rate (°/100ft)	
4,500.0	9.72	115.79	4,444.8	-3,782.2	-283.6	604.6	667.4	0.00	0.00	0.00	
4,600.0	9.72	115.79	4,543.4	-3,683.6	-291.0	619.8	684.3	0.00	0.00	0.00	
Fort Union											
4,618.9	9.72	115.79	4,562.0	-3,665.0	-292.4	622.7	687.5	0.00	0.00	0.00	
4,700.0	9.72	115.79	4,641.9	-3,585.1	-298.3	635.0	701.2	0.00	0.00	0.00	
4,800.0	9.72	115.79	4,740.5	-3,486.5	-305.7	650.2	718.1	0.00	0.00	0.00	
4,900.0	9.72	115.79	4,839.1	-3,387.9	-313.0	665.4	734.9	0.00	0.00	0.00	
Base Fort Union											
4,923.3	9.72	115.79	4,862.0	-3,365.0	-314.7	668.9	738.9	0.00	0.00	0.00	
5,000.0	9.72	115.79	4,937.6	-3,289.4	-320.3	680.6	751.8	0.00	0.00	0.00	
5,100.0	9.72	115.79	5,036.2	-3,190.8	-327.7	695.8	768.7	0.00	0.00	0.00	
5,200.0	9.72	115.79	5,134.8	-3,092.2	-335.0	711.0	785.6	0.00	0.00	0.00	
5,300.0	9.72	115.79	5,233.3	-2,993.7	-342.4	726.2	802.4	0.00	0.00	0.00	
5,400.0	9.72	115.79	5,331.9	-2,895.1	-349.7	741.4	819.3	0.00	0.00	0.00	
5,500.0	9.72	115.79	5,430.5	-2,796.5	-357.1	756.5	836.2	0.00	0.00	0.00	
5,600.0	9.72	115.79	5,529.0	-2,698.0	-364.4	771.7	853.0	0.00	0.00	0.00	
5,700.0	9.72	115.79	5,627.6	-2,599.4	-371.7	786.9	869.9	0.00	0.00	0.00	
Mesaverde/Williams Fk *											
5,750.1	9.72	115.79	5,677.0	-2,550.0	-375.4	794.6	878.4	0.00	0.00	0.00	
5,800.0	9.72	115.79	5,726.2	-2,500.8	-379.1	802.1	886.8	0.00	0.00	0.00	
5,900.0	9.72	115.79	5,824.7	-2,402.3	-386.4	817.3	903.7	0.00	0.00	0.00	
6,000.0	9.72	115.79	5,923.3	-2,303.7	-393.8	832.5	920.5	0.00	0.00	0.00	
6,100.0	9.72	115.79	6,021.8	-2,205.2	-401.1	847.7	937.4	0.00	0.00	0.00	
Start of Drop											
6,191.8	9.72	115.79	6,112.3	-2,114.7	-407.9	861.7	952.9	0.00	0.00	0.00	
6,200.0	9.59	115.79	6,120.4	-2,106.6	-408.5	862.9	954.3	1.49	-1.49	0.00	
6,300.0	8.09	115.79	6,219.2	-2,007.8	-415.1	876.7	969.6	1.50	-1.50	0.00	
6,400.0	6.59	115.79	6,318.4	-1,908.6	-420.7	888.3	982.4	1.50	-1.50	0.00	
6,500.0	5.09	115.79	6,417.9	-1,809.1	-425.1	897.4	992.6	1.50	-1.50	0.00	
6,600.0	3.59	115.79	6,517.6	-1,709.4	-428.4	904.2	1,000.2	1.50	-1.50	0.00	
6,700.0	2.09	115.79	6,617.5	-1,609.5	-430.6	908.7	1,005.1	1.50	-1.50	0.00	
6,800.0	0.59	115.79	6,717.4	-1,509.6	-431.6	910.8	1,007.5	1.50	-1.50	0.00	
EOD = 0° Inc - Top Gas Cell - Puckett 32B-36D Tgt											
6,839.6	0.00	0.00	6,757.0	-1,470.0	-431.7	911.0	1,007.7	1.50	-1.50	0.00	
6,900.0	0.15	214.96	6,817.4	-1,409.6	-431.8	911.0	1,007.7	0.25	0.25	0.00	
7,000.0	0.40	214.96	6,917.4	-1,309.6	-432.2	910.7	1,007.6	0.25	0.25	0.00	
7,100.0	0.65	214.96	7,017.4	-1,209.6	-432.9	910.2	1,007.5	0.25	0.25	0.00	
7,197.4	0.89	214.96	7,114.9	-1,112.1	-434.0	909.4	1,007.3	0.25	0.25	0.00	
7,200.0	0.89	214.96	7,117.4	-1,109.6	-434.0	909.4	1,007.3	0.00	0.00	0.00	
7,300.0	0.89	214.96	7,217.4	-1,009.6	-435.3	908.5	1,007.1	0.00	0.00	0.00	
7,400.0	0.89	214.96	7,317.4	-909.6	-436.6	907.6	1,006.9	0.00	0.00	0.00	
7,500.0	0.89	214.96	7,417.4	-809.6	-437.9	906.7	1,006.6	0.00	0.00	0.00	
7,600.0	0.89	214.96	7,517.4	-709.6	-439.1	905.8	1,006.4	0.00	0.00	0.00	
7,700.0	0.89	214.96	7,617.4	-609.6	-440.4	904.9	1,006.2	0.00	0.00	0.00	
7,800.0	0.89	214.96	7,717.3	-509.7	-441.7	904.0	1,006.0	0.00	0.00	0.00	
7,900.0	0.89	214.96	7,817.3	-409.7	-443.0	903.1	1,005.8	0.00	0.00	0.00	
8,000.0	0.89	214.96	7,917.3	-309.7	-444.3	902.2	1,005.6	0.00	0.00	0.00	
8,100.0	0.89	214.96	8,017.3	-209.7	-445.5	901.3	1,005.3	0.00	0.00	0.00	
8,200.0	0.89	214.96	8,117.3	-109.7	-446.8	900.4	1,005.1	0.00	0.00	0.00	
Cameo											
8,239.7	0.89	214.96	8,157.0	-70.0	-447.3	900.1	1,005.0	0.00	0.00	0.00	
8,300.0	0.89	214.96	8,217.3	-9.7	-448.1	899.5	1,004.9	0.00	0.00	0.00	
8,400.0	0.89	214.96	8,317.3	90.3	-449.4	898.6	1,004.7	0.00	0.00	0.00	



Database:	RMR1 Database	Local Co-ordinate Reference:	Well Puckett 32B-36D
Company:	Petroleum Development Corp.	TVD Reference:	Puckett 32B-36D KBE @ 8227.0ft (H&P 318)
Project:	Mesa	MD Reference:	Puckett 32B-36D KBE @ 8227.0ft (H&P 318)
Site:	NESW Sec 36-T6S-R97W	North Reference:	True
Well:	Puckett 32B-36D	Survey Calculation Method:	Minimum Curvature
Wellbore:	DD		
Design:	Plan #1		

Planned Survey											
Measured Depth (ft)	Inclination (°)	Azimuth (°)	Vertical Depth (ft)	Subsea Depth (ft)	+N/-S (ft)	+E/-W (ft)	Vertical Section (ft)	Dogleg Rate (°/100ft)	Build Rate (°/100ft)	Turn Rate (°/100ft)	
8,500.0	0.89	214.96	8,417.3	190.3	-450.7	897.7	1,004.5	0.00	0.00	0.00	
8,600.0	0.89	214.96	8,517.2	290.2	-451.9	896.8	1,004.3	0.00	0.00	0.00	
8,700.0	0.89	214.96	8,617.2	390.2	-453.2	896.0	1,004.1	0.00	0.00	0.00	
Rollins											
8,739.8	0.89	214.96	8,657.0	430.0	-453.7	895.6	1,004.0	0.00	0.00	0.00	
8,800.0	0.89	214.96	8,717.2	490.2	-454.5	895.1	1,003.8	0.00	0.00	0.00	
8,900.0	0.89	214.96	8,817.2	590.2	-455.8	894.2	1,003.6	0.00	0.00	0.00	
Puckett 32B-36D BHL											
8,939.8	0.89	214.96	8,857.0	630.0	-456.3	893.8	1,003.5	0.00	0.00	0.00	

Design Targets										
Target Name	Dip Angle (°)	Dip Dir. (°)	TVD (ft)	+N/-S (ft)	+E/-W (ft)	Northing (ft)	Easting (ft)	Latitude	Longitude	
Puckett 32B-36D Tgt - hit/miss target - Shape - Point	0.00	0.00	6,757.0	-431.7	911.0	1,611,648.37	2,247,509.87	39° 28' 56.753 N	108° 9' 58.961 W	
Puckett 32B-36D BHL - plan hits target center - Circle (radius 60.0)	0.00	0.00	8,857.0	-456.3	893.8	1,611,624.30	2,247,491.97	39° 28' 56.510 N	108° 9' 59.180 W	

Casing Points						
Measured Depth (ft)	Vertical Depth (ft)	Name	Casing Diameter (")	Hole Diameter (")		
2,729.8	2,700.0	Surface Casing				

Formations						
Measured Depth (ft)	Vertical Depth (ft)	Name	Lithology	Dip (°)	Dip Direction (°)	
1,996.3	1,977.0	Wasatch				
4,329.8	4,277.0	Wasatch "G" Sand				
4,618.9	4,562.0	Fort Union				
4,923.3	4,862.0	Base Fort Union				
5,750.1	5,677.0	Mesaverde/Williams Fk	*			
6,839.6	6,757.0	Top Gas Cell				
8,239.7	8,157.0	Cameo				
8,739.8	8,657.0	Rollins				

Database:	RMR1 Database	Local Co-ordinate Reference:	Well Puckett 32B-36D
Company:	Petroleum Development Corp.	TVD Reference:	Puckett 32B-36D KBE @ 8227.0ft (H&P 318)
Project:	Mesa	MD Reference:	Puckett 32B-36D KBE @ 8227.0ft (H&P 318)
Site:	NESW Sec 36-T6S-R97W	North Reference:	True
Well:	Puckett 32B-36D	Survey Calculation Method:	Minimum Curvature
Wellbore:	DD		
Design:	Plan #1		

Plan Annotations

Measured Depth (ft)	Vertical Depth (ft)	Local Coordinates		Comment
		+N/-S (ft)	+E/-W (ft)	
200.0	200.0	0.0	0.0	KOP @ 200' MD
875.6	872.4	-17.5	53.9	EOB = 9.72° Inc
6,191.8	6,112.3	-407.9	861.7	Start of Drop
6,839.6	6,757.0	-431.7	911.0	EOD = 0° Inc
8,939.8	8,857.0	-456.3	893.8	TD = 8939.8' MD