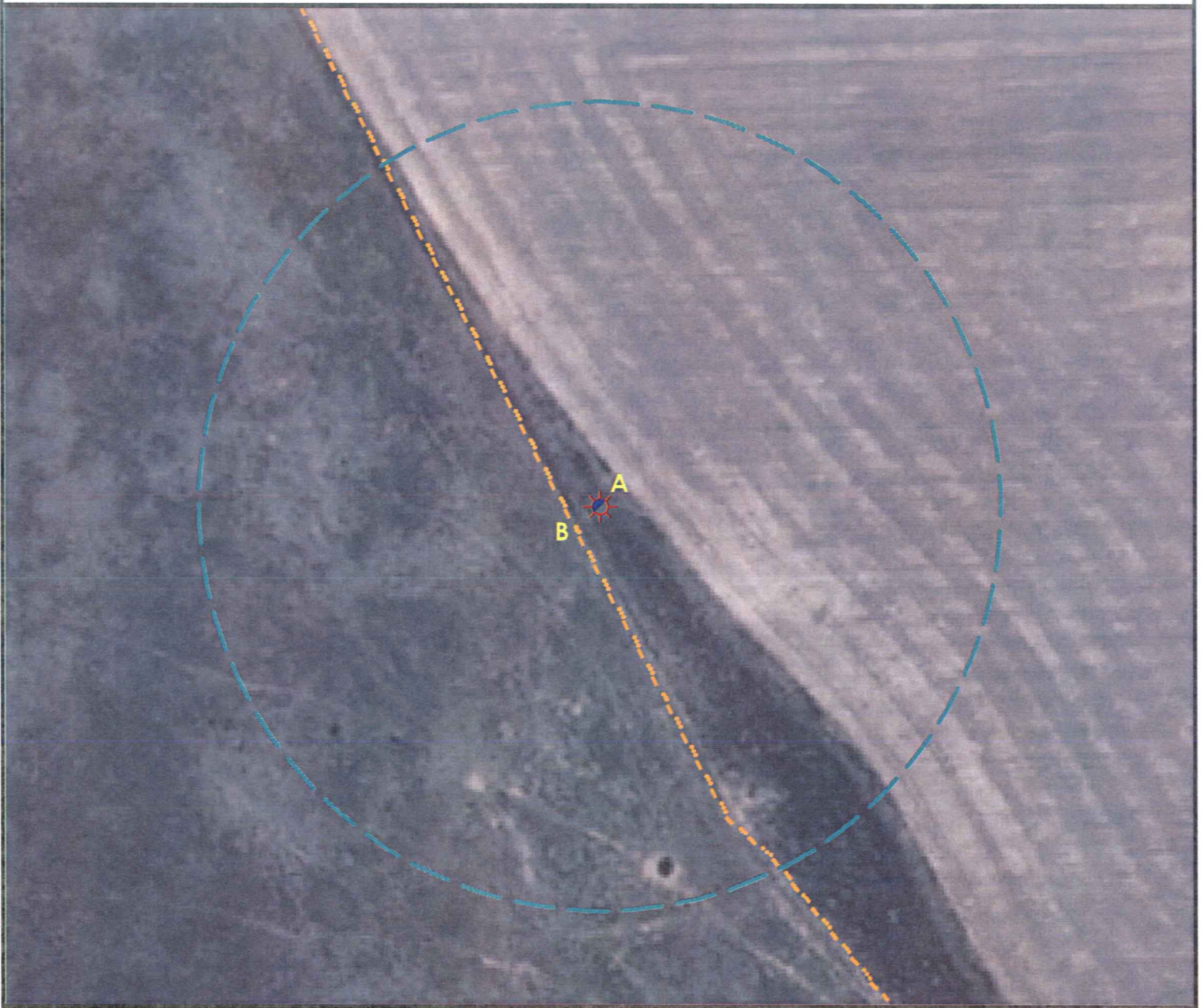


Location Drawing



A. Proposed well PRICKETT 07-02.

B. Fence is 30' SE.



Legend

- | | |
|----------------------|-----------------------|
| Proposed Well | Building/Residence |
| Existing Well | Oil & Gas Equipment |
| Water Well | Water Body |
| Pedestal | Utility Box |
| CattleGuard/Gate | Railroad |
| Bridge | Fence |
| ECD | Overhead Power Line |
| 400' Radius | Pipeline |
| Facilities Enclosure | Access Road |
| | Ditch/Canal |
| | Concrete Walled Ditch |

400ft Radius Map

PRICKETT 07-02

Surface Location: T1S 45W S7
Description of surface uses : Rangeland

Field Date: 12/11/2009
Drawing Date: 03/08/2010
Drafter: DMM
Checked By: BHF

Aerial Photo supplied by NAIP (2009)

Prepared for:
Rosetta Resources
Operating LP
717 Texas Avenue, Ste. 2800
Houston, TX 77002



Use our resources to find yours!
www.petro-fs.com

1801 W. 13th Ave
Denver, CO 80204
(303) 928-7128
111 E. Third Street
Suite 207
Rifle, CO 81650
(970) 625-4740