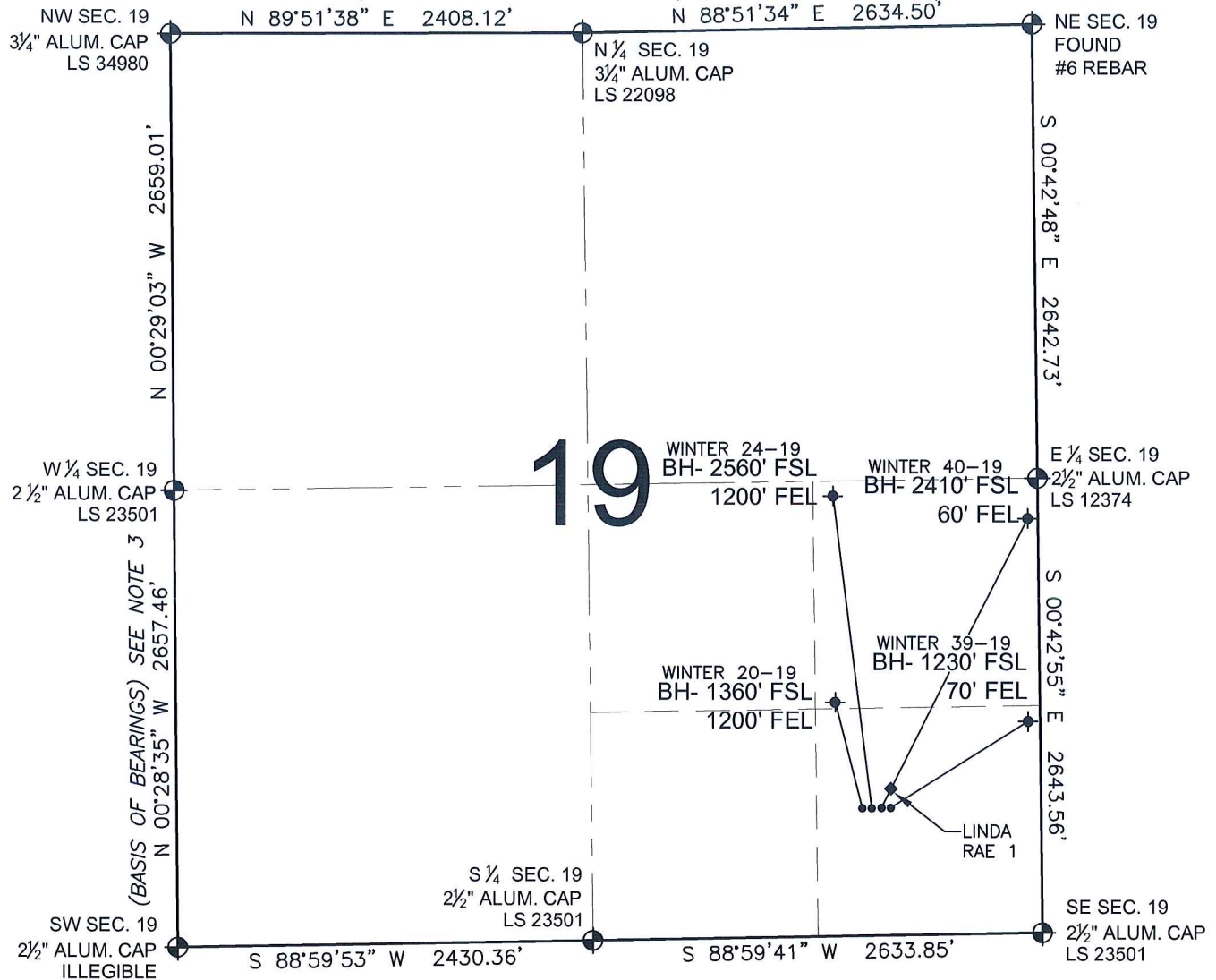


# PAD DRAWING - WINTER 4 PAD

SECTION 19, TOWNSHIP 6 NORTH, RANGE 64 WEST, 6TH P.M.



## LEGEND

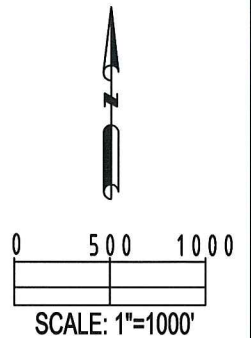
- ⊕ = EXISTING MONUMENT
- ⬤ = PROPOSED WELL
- ⬥ = BOTTOM HOLE
- ⬦ = EXISTING WELL
- BH= BOTTOM HOLE

## NOTES:

- THIS SURVEY WAS DONE BY GPS METHODS AND CONFORMS TO THE MINIMUM STANDARDS SET BY THE C.O.G.C.C., RULE NO. 215
- ELEVATIONS SHOWN AT THE WELL HEAD, AS WELL AS HORIZONTAL CONTROL, ARE BASED ON GPS-RTK VALUES DERIVED FROM DOING 2-HOUR STATIC GPS SESSIONS AND REDUCTIONS USING O.P.U.S. SOLUTIONS.  
VERTICAL = NAVD88; HORIZONTAL = NAD83/92
- THE BEARINGS SHOWN HEREON ARE BASED ON GPS OBSERVATIONS BETWEEN THE MONUMENTS SHOWN HEREON AS FOUND ON THE FIELD DATE BELOW.
- DISTANCES SHOWN ARE AT GROUND LEVEL, AS MEASURED IN THE FIELD, WITH TIES TO WELLS MEASURED AT A PERPENDICULAR TO SECTION LINES.

## NOTES:

WINTER 39-19 TO BE AT 741' FSL, 882' FEL.  
 BOTTOM HOLE AT 1230' FSL & 70' FEL.  
 WINTER 40-19 TO BE AT 741' FSL, 898' FEL.  
 BOTTOM HOLE AT 2410' FSL & 60' FEL.  
 WINTER 24-19 TO BE AT 741' FSL, 914' FEL.  
 BOTTOM HOLE AT 2560' FSL & 1200' FEL.  
 WINTER 20-19 TO BE AT 741' FSL, 930' FEL.  
 BOTTOM HOLE AT 1360' FSL & 1200' FEL.  
 LINDA RAE 1 IS 970' FSL, 883' FEL.



## REVISIONS

INITIAL	DATE
SMF	04-13-10

PREPARED BY:

**PFS**

Petroleum Field Services, LLC  
 1801 W. 13th Ave.  
 Denver, CO 80204



KERR-MCGEE OIL & GAS ONSHORE LP

FIELD DATE:  
03-18-10

DRAWING DATE:  
03-23-10

BY:  
SMF

PAD NAME:  
WINTER 4 PAD

SURFACE LOCATION:

WELD COUNTY, COLORADO  
 SE 1/4 SE 1/4, SEC. 19, T6N, R64W