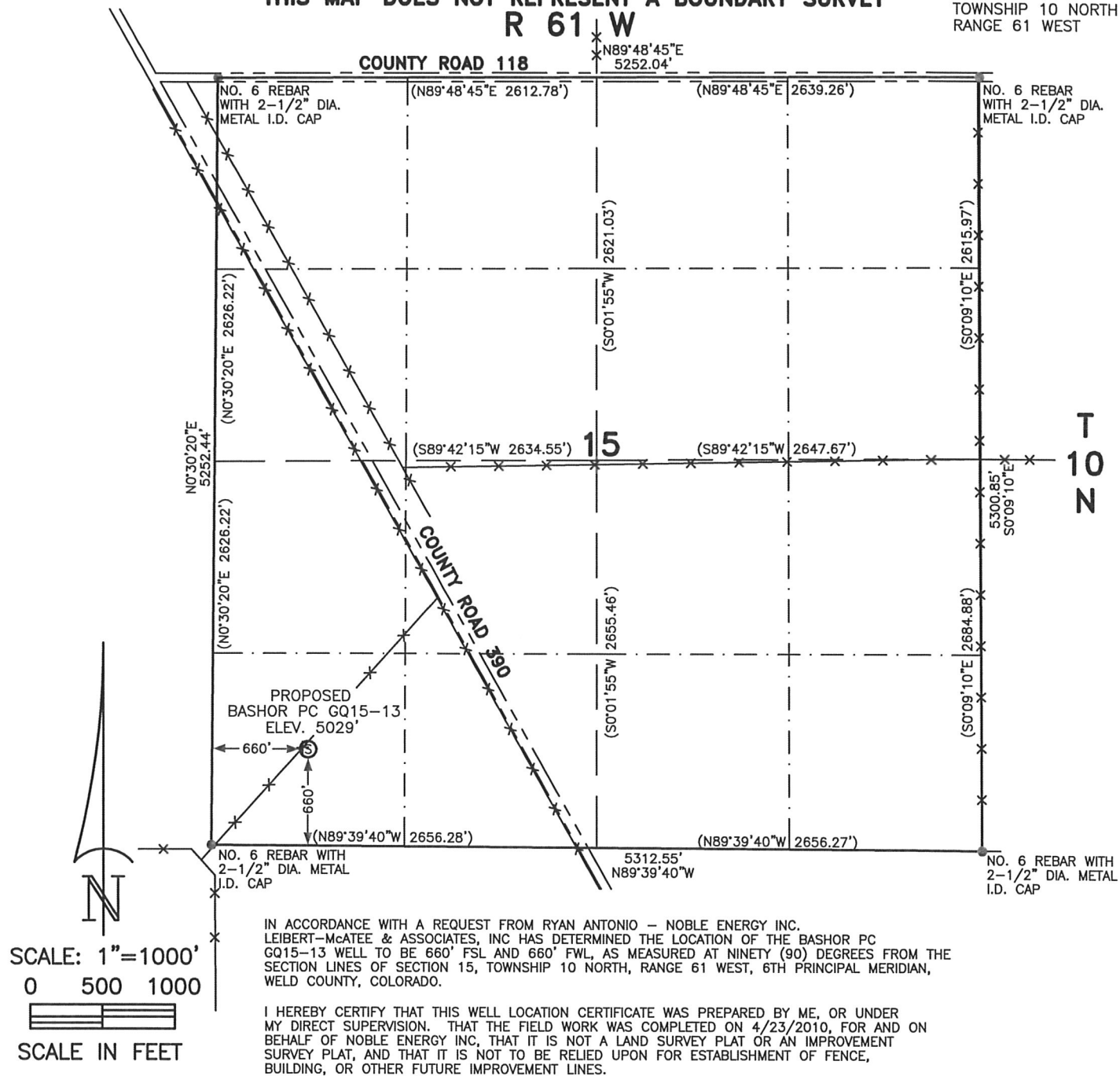


**WELL LOCATION CERTIFICATE****THIS MAP DOES NOT REPRESENT A BOUNDARY SURVEY****R 61 W**SECTION 15  
TOWNSHIP 10 NORTH  
RANGE 61 WEST**NOTES:**

- 1) BASIS OF BEARINGS FOR THIS MAP ARE BASED UPON GPS OBSERVATIONS MADE ON 4/23/2010 BETWEEN MONUMENT LOCATED AT THE NORTHWEST SECTION CORNER AND THE NORTHEAST SECTION CORNER OF SAID SECTION AND WITH ALL BEARINGS SHOWN HEREON RELATIVE THERETO.
- 2) ELEVATIONS ARE BASED UPON NGS OPUS SOLUTION NAVD 88 DATUM.
- 3) SEE VISIBLE IMPROVEMENTS EXHIBIT FOR ALL IMPROVEMENTS WITHIN 600'.
- 4) THE LOCATION FALLS IN PASTURE.

**LATITUDE & LONGITUDE (NAD 83):**

LATITUDE: N 40.82873

LONGITUDE: W 104.19959

PDOP: 3.8

QUARTER-QUARTER: SW1/4SW1/4

NEAREST PROPERTY LINE: 660' SOUTH AND WEST

**LEGEND**

⑤ PROPOSED SURFACE LOCATION

== == == ROAD

-x-x- FENCE

CALCULATED DIMENSIONS  
ARE IN PARENTHESESGPS OPERATOR: DARREN VEAL  
DWG NO. 309-10

NOTICE: According to Colorado law you MUST commence any legal action based upon any defect in the W.L.C. within three years after you first discover such defect. In no event may only action based upon any defect in this W.L.C. be commenced more than ten years from this sold date of the certification shown hereon.

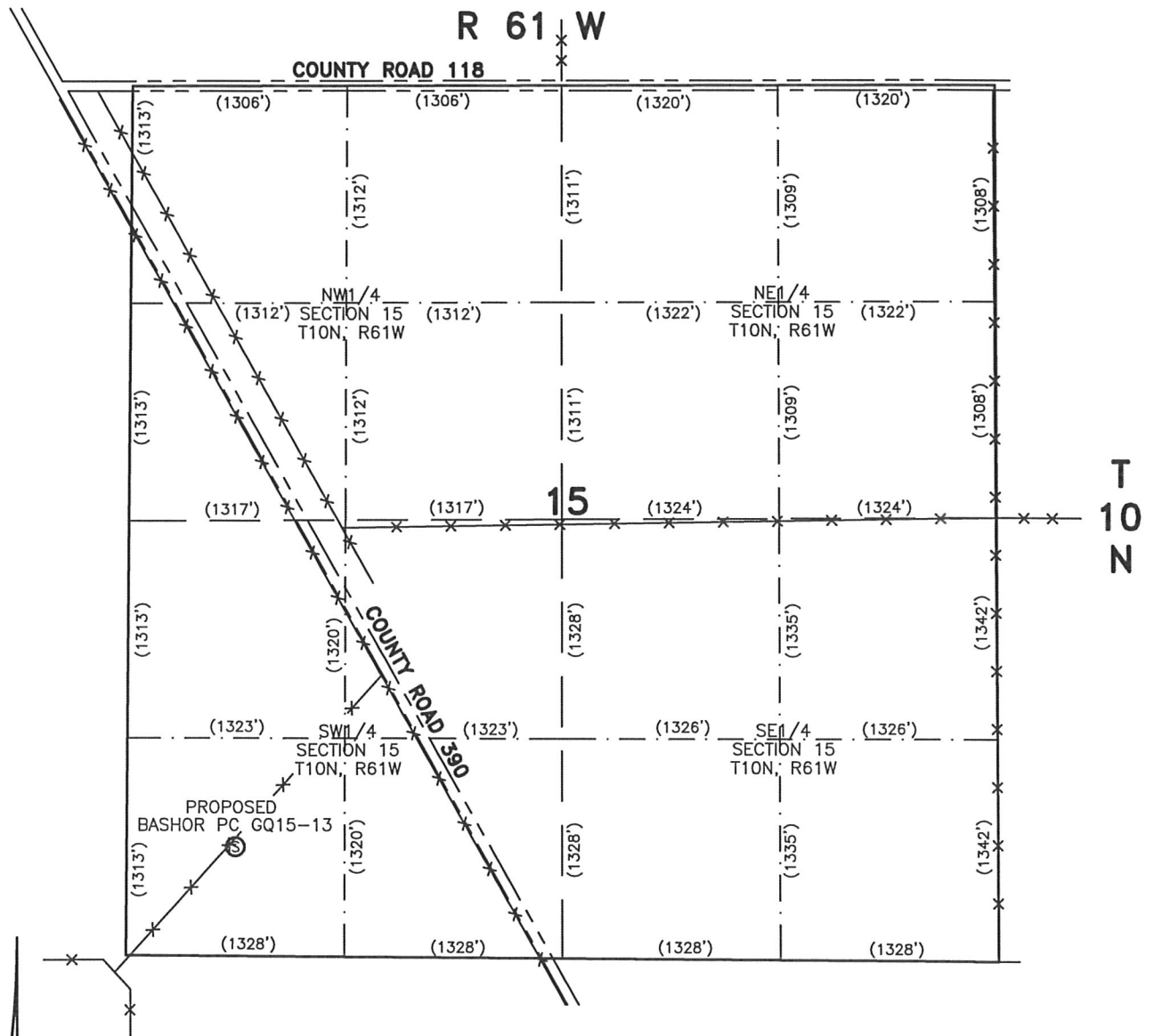


COMPLETED 4-26-10

NICOLE F. HAY  
FOR AND ON BEHALF OF  
LEIBERT-McATEE & ASSOCIATES, INC  
P.L.S. 38044

# SITE SKETCH – BASHOR PC GQ15-13

SECTION 15  
TOWNSHIP 10 NORTH  
RANGE 61 WEST



NOTES:  
1) THIS SKETCH DOES NOT REPRESENT A BOUNDARY SURVEY.



SCALE: 1"=1000'

0 500 1000



SCALE IN FEET

## LEGEND

Ⓢ PROPOSED SURFACE LOCATION

== ROAD

-x-x- FENCE

CALCULATED DIMENSIONS  
ARE IN PARENTHESES