

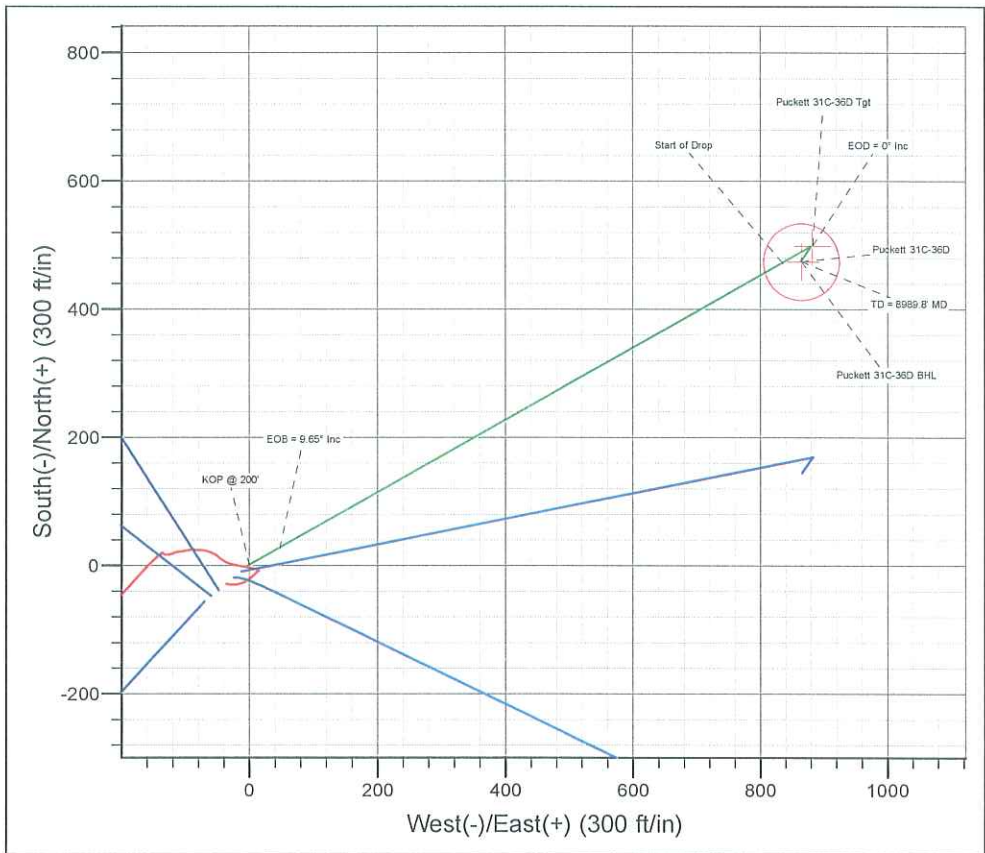
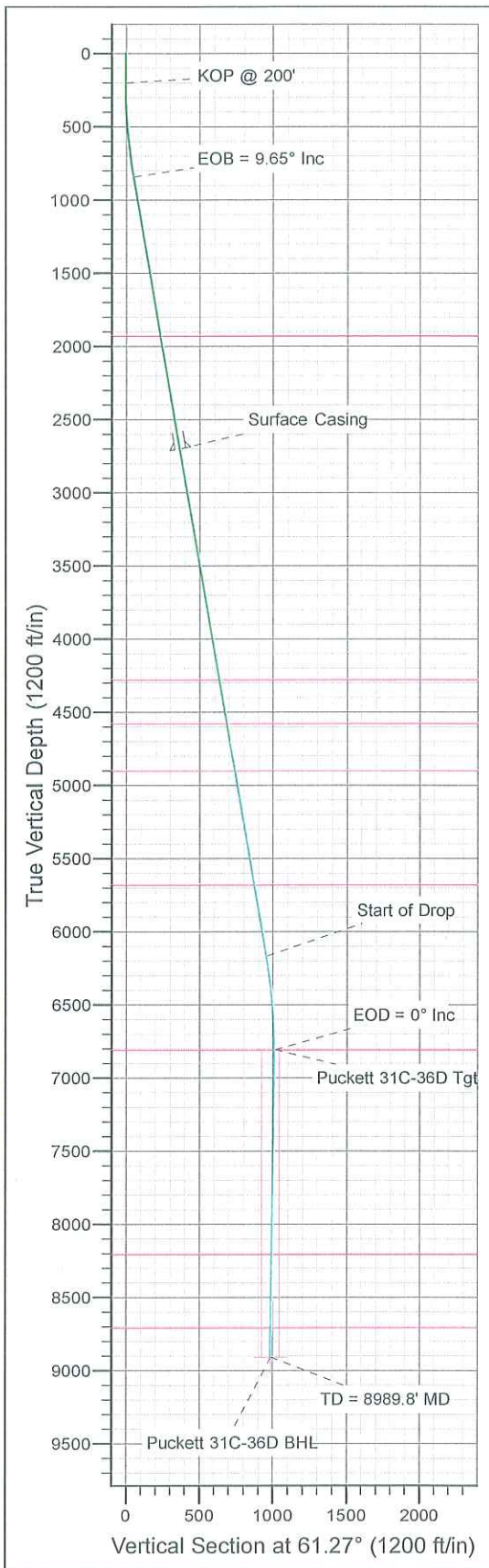
Project: Mesa  
 Site: NESW Sec 36-T6S-R97W  
 Well: Puckett 31C-36D  
 Wellbore: DD  
 Design: Plan #1



Azimuths to True North  
 Magnetic North: 10.57°  
 Magnetic Field  
 Strength: 52314.0snT  
 Dip Angle: 65.73°  
 Date: 2010/05/07  
 Model: IGRF2010-14

WELL DETAILS: Puckett 31C-36D

+N/-S    +E/-W    Northing    Ground Level: 8203.0  
 0.0    0.0    1612125.18    Easting    Latitude    Longitude    Slot  
 2246636.03    39° 29' 1.210 N    108° 10' 10.280 W



ANNOTATIONS

TVD	MD	Annotation
200.0	200.0	KOP @ 200'
840.5	843.6	EOB = 9.65° Inc
6166.5	6246.0	Start of Drop
6807.0	6889.6	EOD = 0° Inc
8907.0	8989.8	TD = 8989.8' MD

FORMATION TOP DETAILS

TVDPATH	MDPATH	FORMATION
1927.0	1945.6	Wasatch
4277.0	4329.4	Wasatch "G" Sand
4577.0	4633.7	Fort Union
4897.0	4958.3	Base Fort Union
5677.0	5749.5	Mesaverde/Williams Fk
6807.0	6889.6	Top Gas Cell
8207.0	8289.7	Cameo
8707.0	8789.8	Rollins

ON DETAILS

Sec	MD	Inc	Azi	TVD	+N/-S	+E/-W	DLeg	TFace	VSec	Target
1	0.0	0.00	0.00	0.0	0.0	0.0	0.00	0.00	0.0	
2	200.0	0.00	0.00	200.0	0.0	0.0	0.00	0.00	0.0	
3	843.6	9.65	60.52	840.5	26.6	47.1	1.50	60.52	54.1	
4	6246.0	9.65	60.52	6166.5	472.5	835.7	0.00	0.00	959.9	
5	6889.6	0.00	0.00	6807.0	499.1	882.8	1.50	180.00	1014.0	Puckett 31C-36D Tgt
6	7247.5	0.89	215.09	7164.9	496.8	881.2	0.25	215.09	1011.5	
7	8989.8	0.89	215.09	8907.0	474.5	865.6	0.00	0.00	987.1	Puckett 31C-36D BHL

WELLBORE TARGET DETAILS (LAT/LONG)

Name	TVD	+N/-S	+E/-W	Latitude	Longitude	Shape
Puckett 31C-36D Tgt	6807.0	499.1	882.8	39° 29' 6.143 N	108° 9' 59.020 W	Point
Puckett 31C-36D BHL	8907.0	474.5	865.6	39° 29' 5.900 N	108° 9' 59.240 W	Circle (Radius: 60.0)

CASING DETAILS

TVD	MD	Name	Size
2700.0	2729.7	Surface Casing	

Plan: Plan #1 (Puckett 31C-36D/DD)

Created By: Jon Schweigert    Date: 9:58, May 11 2010  
 Checked: \_\_\_\_\_    Date: \_\_\_\_\_  
 Reviewed: \_\_\_\_\_    Date: \_\_\_\_\_  
 Approved: \_\_\_\_\_    Date: \_\_\_\_\_



<b>Database:</b>	RMR1 Database	<b>Local Co-ordinate Reference:</b>	Well Puckett 31C-36D
<b>Company:</b>	Petroleum Development Corp.	<b>TVD Reference:</b>	Puckett 31C-36D KBE @ 8227.0ft (H&P 318)
<b>Project:</b>	Mesa	<b>MD Reference:</b>	Puckett 31C-36D KBE @ 8227.0ft (H&P 318)
<b>Site:</b>	NESW Sec 36-T6S-R97W	<b>North Reference:</b>	True
<b>Well:</b>	Puckett 31C-36D	<b>Survey Calculation Method:</b>	Minimum Curvature
<b>Wellbore:</b>	DD		
<b>Design:</b>	Plan #1		

<b>Project</b>	Mesa		
<b>Map System:</b>	US State Plane 1983	<b>System Datum:</b>	Mean Sea Level
<b>Geo Datum:</b>	North American Datum 1983		
<b>Map Zone:</b>	Colorado Central Zone		

<b>Site</b>	NESW Sec 36-T6S-R97W				
<b>Site Position:</b>		<b>Northing:</b>	1,612,095.79 ft	<b>Latitude:</b>	39° 29' 0.904 N
<b>From:</b>	Lat/Long	<b>Easting:</b>	2,246,581.45 ft	<b>Longitude:</b>	108° 10' 10.965 W
<b>Position Uncertainty:</b>	0.0 ft	<b>Slot Radius:</b>		<b>Grid Convergence:</b>	-1.68 °

<b>Well</b>	Puckett 31C-36D					
<b>Well Position</b>	<b>+N/-S</b>	31.0 ft	<b>Northing:</b>	1,612,125.17 ft	<b>Latitude:</b>	39° 29' 1.210 N
	<b>+E/-W</b>	53.7 ft	<b>Easting:</b>	2,246,636.03 ft	<b>Longitude:</b>	108° 10' 10.280 W
<b>Position Uncertainty</b>		0.0 ft	<b>Wellhead Elevation:</b>		<b>Ground Level:</b>	8,203.0 ft

<b>Wellbore</b>	DD				
<b>Magnetics</b>	<b>Model Name</b>	<b>Sample Date</b>	<b>Declination (°)</b>	<b>Dip Angle (°)</b>	<b>Field Strength (nT)</b>
	IGRF2010-14	2010/05/07	10.57	65.73	52,314

<b>Design</b>	Plan #1			
<b>Audit Notes:</b>				
<b>Version:</b>	<b>Phase:</b>	PROTOTYPE	<b>Tie On Depth:</b>	0.0
<b>Vertical Section:</b>	<b>Depth From (TVD) (ft)</b>	<b>+N/-S (ft)</b>	<b>+E/-W (ft)</b>	<b>Direction (°)</b>
	0.0	0.0	0.0	61.27

Plan Sections										
Measured Depth (ft)	Inclination (°)	Azimuth (°)	Vertical Depth (ft)	+N/-S (ft)	+E/-W (ft)	Dogleg Rate (°/100ft)	Build Rate (°/100ft)	Turn Rate (°/100ft)	TFO (°)	Target
0.0	0.00	0.00	0.0	0.0	0.0	0.00	0.00	0.00	0.00	
200.0	0.00	0.00	200.0	0.0	0.0	0.00	0.00	0.00	0.00	
843.6	9.65	60.52	840.5	26.6	47.1	1.50	1.50	0.00	60.52	
6,246.0	9.65	60.52	6,166.5	472.5	835.7	0.00	0.00	0.00	0.00	
6,889.6	0.00	0.00	6,807.0	499.1	882.8	1.50	-1.50	0.00	180.00	Puckett 31C-36D Tgt
7,247.5	0.89	215.09	7,164.9	496.8	881.2	0.25	0.25	-40.48	215.09	
8,989.8	0.89	215.09	8,907.0	474.5	865.6	0.00	0.00	0.00	0.00	Puckett 31C-36D BHL

<b>Database:</b>	RMR1 Database	<b>Local Co-ordinate Reference:</b>	Well Puckett 31C-36D
<b>Company:</b>	Petroleum Development Corp.	<b>TVD Reference:</b>	Puckett 31C-36D KBE @ 8227.0ft (H&P 318)
<b>Project:</b>	Mesa	<b>MD Reference:</b>	Puckett 31C-36D KBE @ 8227.0ft (H&P 318)
<b>Site:</b>	NESW Sec 36-T6S-R97W	<b>North Reference:</b>	True
<b>Well:</b>	Puckett 31C-36D	<b>Survey Calculation Method:</b>	Minimum Curvature
<b>Wellbore:</b>	DD		
<b>Design:</b>	Plan #1		

### Planned Survey

Measured Depth (ft)	Inclination (°)	Azimuth (°)	Vertical Depth (ft)	Subsea Depth (ft)	+N/-S (ft)	+E/-W (ft)	Vertical Section (ft)	Dogleg Rate (°/100ft)	Build Rate (°/100ft)	Turn Rate (°/100ft)
0.0	0.00	0.00	0.0	-8,227.0	0.0	0.0	0.0	0.00	0.00	0.00
100.0	0.00	0.00	100.0	-8,127.0	0.0	0.0	0.0	0.00	0.00	0.00
<b>KOP @ 200'</b>										
200.0	0.00	0.00	200.0	-8,027.0	0.0	0.0	0.0	0.00	0.00	0.00
300.0	1.50	60.52	300.0	-7,927.0	0.6	1.1	1.3	1.50	1.50	0.00
400.0	3.00	60.52	399.9	-7,827.1	2.6	4.6	5.2	1.50	1.50	0.00
500.0	4.50	60.52	499.7	-7,727.3	5.8	10.3	11.8	1.50	1.50	0.00
600.0	6.00	60.52	599.3	-7,627.7	10.3	18.2	20.9	1.50	1.50	0.00
700.0	7.50	60.52	698.6	-7,528.4	16.1	28.4	32.7	1.50	1.50	0.00
800.0	9.00	60.52	797.5	-7,429.5	23.1	40.9	47.0	1.50	1.50	0.00
<b>EOB = 9.65° Inc</b>										
843.6	9.65	60.52	840.5	-7,386.5	26.6	47.1	54.1	1.50	1.50	0.00
900.0	9.65	60.52	896.2	-7,330.8	31.3	55.3	63.5	0.00	0.00	0.00
1,000.0	9.65	60.52	994.7	-7,232.3	39.5	69.9	80.3	0.00	0.00	0.00
1,100.0	9.65	60.52	1,093.3	-7,133.7	47.8	84.5	97.1	0.00	0.00	0.00
1,200.0	9.65	60.52	1,191.9	-7,035.1	56.0	99.1	113.8	0.00	0.00	0.00
1,300.0	9.65	60.52	1,290.5	-6,936.5	64.3	113.7	130.6	0.00	0.00	0.00
1,400.0	9.65	60.52	1,389.1	-6,837.9	72.5	128.3	147.4	0.00	0.00	0.00
1,500.0	9.65	60.52	1,487.7	-6,739.3	80.8	142.9	164.2	0.00	0.00	0.00
1,600.0	9.65	60.52	1,586.2	-6,640.8	89.0	157.5	180.9	0.00	0.00	0.00
1,700.0	9.65	60.52	1,684.8	-6,542.2	97.3	172.1	197.7	0.00	0.00	0.00
1,800.0	9.65	60.52	1,783.4	-6,443.6	105.6	186.7	214.5	0.00	0.00	0.00
1,900.0	9.65	60.52	1,882.0	-6,345.0	113.8	201.3	231.2	0.00	0.00	0.00
<b>Wasatch</b>										
1,945.6	9.65	60.52	1,927.0	-6,300.0	117.6	208.0	238.9	0.00	0.00	0.00
2,000.0	9.65	60.52	1,980.6	-6,246.4	122.1	215.9	248.0	0.00	0.00	0.00
2,100.0	9.65	60.52	2,079.2	-6,147.8	130.3	230.5	264.8	0.00	0.00	0.00
2,200.0	9.65	60.52	2,177.8	-6,049.2	138.6	245.1	281.5	0.00	0.00	0.00
2,300.0	9.65	60.52	2,276.3	-5,950.7	146.8	259.7	298.3	0.00	0.00	0.00
2,400.0	9.65	60.52	2,374.9	-5,852.1	155.1	274.3	315.1	0.00	0.00	0.00
2,500.0	9.65	60.52	2,473.5	-5,753.5	163.3	288.9	331.8	0.00	0.00	0.00
2,600.0	9.65	60.52	2,572.1	-5,654.9	171.6	303.5	348.6	0.00	0.00	0.00
2,700.0	9.65	60.52	2,670.7	-5,556.3	179.8	318.1	365.4	0.00	0.00	0.00
<b>Surface Casing</b>										
2,729.7	9.65	60.52	2,700.0	-5,527.0	182.3	322.4	370.4	0.00	0.00	0.00
2,800.0	9.65	60.52	2,769.3	-5,457.7	188.1	332.7	382.1	0.00	0.00	0.00
2,900.0	9.65	60.52	2,867.8	-5,359.2	196.3	347.3	398.9	0.00	0.00	0.00
3,000.0	9.65	60.52	2,966.4	-5,260.6	204.6	361.9	415.7	0.00	0.00	0.00
3,100.0	9.65	60.52	3,065.0	-5,162.0	212.8	376.5	432.4	0.00	0.00	0.00
3,200.0	9.65	60.52	3,163.6	-5,063.4	221.1	391.1	449.2	0.00	0.00	0.00
3,300.0	9.65	60.52	3,262.2	-4,964.8	229.3	405.7	466.0	0.00	0.00	0.00
3,400.0	9.65	60.52	3,360.8	-4,866.2	237.6	420.3	482.7	0.00	0.00	0.00
3,500.0	9.65	60.52	3,459.3	-4,767.7	245.9	434.9	499.5	0.00	0.00	0.00
3,600.0	9.65	60.52	3,557.9	-4,669.1	254.1	449.5	516.3	0.00	0.00	0.00
3,700.0	9.65	60.52	3,656.5	-4,570.5	262.4	464.1	533.0	0.00	0.00	0.00
3,800.0	9.65	60.52	3,755.1	-4,471.9	270.6	478.7	549.8	0.00	0.00	0.00
3,900.0	9.65	60.52	3,853.7	-4,373.3	278.9	493.3	566.6	0.00	0.00	0.00
4,000.0	9.65	60.52	3,952.3	-4,274.7	287.1	507.8	583.3	0.00	0.00	0.00
4,100.0	9.65	60.52	4,050.8	-4,176.2	295.4	522.4	600.1	0.00	0.00	0.00
4,200.0	9.65	60.52	4,149.4	-4,077.6	303.6	537.0	616.9	0.00	0.00	0.00
4,300.0	9.65	60.52	4,248.0	-3,979.0	311.9	551.6	633.6	0.00	0.00	0.00
<b>Wasatch "G" Sand</b>										
4,329.4	9.65	60.52	4,277.0	-3,950.0	314.3	555.9	638.6	0.00	0.00	0.00
4,400.0	9.65	60.52	4,346.6	-3,880.4	320.1	566.2	650.4	0.00	0.00	0.00

<b>Database:</b>	RMR1 Database	<b>Local Co-ordinate Reference:</b>	Well Puckett 31C-36D
<b>Company:</b>	Petroleum Development Corp.	<b>TVD Reference:</b>	Puckett 31C-36D KBE @ 8227.0ft (H&P 318)
<b>Project:</b>	Mesa	<b>MD Reference:</b>	Puckett 31C-36D KBE @ 8227.0ft (H&P 318)
<b>Site:</b>	NESW Sec 36-T6S-R97W	<b>North Reference:</b>	True
<b>Well:</b>	Puckett 31C-36D	<b>Survey Calculation Method:</b>	Minimum Curvature
<b>Wellbore:</b>	DD		
<b>Design:</b>	Plan #1		

Planned Survey											
Measured Depth (ft)	Inclination (°)	Azimuth (°)	Vertical Depth (ft)	Subsea Depth (ft)	+N/-S (ft)	+E/-W (ft)	Vertical Section (ft)	Dogleg Rate (°/100ft)	Build Rate (°/100ft)	Turn Rate (°/100ft)	
4,500.0	9.65	60.52	4,445.2	-3,781.8	328.4	580.8	667.2	0.00	0.00	0.00	
4,600.0	9.65	60.52	4,543.8	-3,683.2	336.6	595.4	684.0	0.00	0.00	0.00	
<b>Fort Union</b>											
4,633.7	9.65	60.52	4,577.0	-3,650.0	339.4	600.4	689.6	0.00	0.00	0.00	
4,700.0	9.65	60.52	4,642.4	-3,584.6	344.9	610.0	700.7	0.00	0.00	0.00	
4,800.0	9.65	60.52	4,740.9	-3,486.1	353.1	624.6	717.5	0.00	0.00	0.00	
4,900.0	9.65	60.52	4,839.5	-3,387.5	361.4	639.2	734.3	0.00	0.00	0.00	
<b>Base Fort Union</b>											
4,958.3	9.65	60.52	4,897.0	-3,330.0	366.2	647.7	744.0	0.00	0.00	0.00	
5,000.0	9.65	60.52	4,938.1	-3,288.9	369.6	653.8	751.0	0.00	0.00	0.00	
5,100.0	9.65	60.52	5,036.7	-3,190.3	377.9	668.4	767.8	0.00	0.00	0.00	
5,200.0	9.65	60.52	5,135.3	-3,091.7	386.2	683.0	784.6	0.00	0.00	0.00	
5,300.0	9.65	60.52	5,233.9	-2,993.1	394.4	697.6	801.3	0.00	0.00	0.00	
5,400.0	9.65	60.52	5,332.4	-2,894.6	402.7	712.2	818.1	0.00	0.00	0.00	
5,500.0	9.65	60.52	5,431.0	-2,796.0	410.9	726.8	834.9	0.00	0.00	0.00	
5,600.0	9.65	60.52	5,529.6	-2,697.4	419.2	741.4	851.6	0.00	0.00	0.00	
5,700.0	9.65	60.52	5,628.2	-2,598.8	427.4	756.0	868.4	0.00	0.00	0.00	
<b>Mesaverde/Williams Fk *</b>											
5,749.5	9.65	60.52	5,677.0	-2,550.0	431.5	763.2	876.7	0.00	0.00	0.00	
5,800.0	9.65	60.52	5,726.8	-2,500.2	435.7	770.6	885.2	0.00	0.00	0.00	
5,900.0	9.65	60.52	5,825.4	-2,401.6	443.9	785.2	901.9	0.00	0.00	0.00	
6,000.0	9.65	60.52	5,923.9	-2,303.1	452.2	799.8	918.7	0.00	0.00	0.00	
6,100.0	9.65	60.52	6,022.5	-2,204.5	460.4	814.4	935.5	0.00	0.00	0.00	
6,200.0	9.65	60.52	6,121.1	-2,105.9	468.7	829.0	952.2	0.00	0.00	0.00	
<b>Start of Drop</b>											
6,246.0	9.65	60.52	6,166.5	-2,060.5	472.5	835.7	959.9	0.00	0.00	0.00	
6,300.0	8.84	60.52	6,219.8	-2,007.2	476.8	843.3	968.6	1.50	-1.50	0.00	
6,400.0	7.34	60.52	6,318.8	-1,908.2	483.7	855.5	982.7	1.50	-1.50	0.00	
6,500.0	5.84	60.52	6,418.1	-1,808.9	489.3	865.5	994.2	1.50	-1.50	0.00	
6,600.0	4.34	60.52	6,517.7	-1,709.3	493.7	873.2	1,003.1	1.50	-1.50	0.00	
6,700.0	2.84	60.52	6,617.5	-1,609.5	496.8	878.7	1,009.3	1.50	-1.50	0.00	
6,800.0	1.34	60.52	6,717.4	-1,509.6	498.6	881.9	1,013.0	1.50	-1.50	0.00	
<b>EOD = 0° Inc - Top Gas Cell - Puckett 31C-36D Tgt</b>											
6,889.6	0.00	0.00	6,807.0	-1,420.0	499.1	882.8	1,014.0	1.50	-1.50	0.00	
6,900.0	0.03	215.09	6,817.4	-1,409.6	499.1	882.8	1,014.0	0.25	0.25	0.00	
7,000.0	0.28	215.09	6,917.4	-1,309.6	498.9	882.6	1,013.8	0.25	0.25	0.00	
7,100.0	0.53	215.09	7,017.4	-1,209.6	498.3	882.2	1,013.2	0.25	0.25	0.00	
7,200.0	0.78	215.09	7,117.4	-1,109.6	497.4	881.6	1,012.1	0.25	0.25	0.00	
7,247.5	0.89	215.09	7,164.9	-1,062.1	496.8	881.2	1,011.5	0.25	0.25	0.00	
7,300.0	0.89	215.09	7,217.4	-1,009.6	496.1	880.7	1,010.8	0.00	0.00	0.00	
7,400.0	0.89	215.09	7,317.4	-909.6	494.9	879.8	1,009.4	0.00	0.00	0.00	
7,500.0	0.89	215.09	7,417.4	-809.6	493.6	878.9	1,008.0	0.00	0.00	0.00	
7,600.0	0.89	215.09	7,517.4	-709.6	492.3	878.0	1,006.6	0.00	0.00	0.00	
7,700.0	0.89	215.09	7,617.3	-609.7	491.0	877.1	1,005.2	0.00	0.00	0.00	
7,800.0	0.89	215.09	7,717.3	-509.7	489.8	876.2	1,003.8	0.00	0.00	0.00	
7,900.0	0.89	215.09	7,817.3	-409.7	488.5	875.3	1,002.4	0.00	0.00	0.00	
8,000.0	0.89	215.09	7,917.3	-309.7	487.2	874.4	1,001.0	0.00	0.00	0.00	
8,100.0	0.89	215.09	8,017.3	-209.7	485.9	873.5	999.6	0.00	0.00	0.00	
8,200.0	0.89	215.09	8,117.3	-109.7	484.6	872.6	998.2	0.00	0.00	0.00	
<b>Cameo</b>											
8,289.7	0.89	215.09	8,207.0	-20.0	483.5	871.8	996.9	0.00	0.00	0.00	
8,300.0	0.89	215.09	8,217.3	-9.7	483.4	871.7	996.8	0.00	0.00	0.00	
8,400.0	0.89	215.09	8,317.3	90.3	482.1	870.8	995.4	0.00	0.00	0.00	

<b>Database:</b>	RMR1 Database	<b>Local Co-ordinate Reference:</b>	Well Puckett 31C-36D
<b>Company:</b>	Petroleum Development Corp.	<b>TVD Reference:</b>	Puckett 31C-36D KBE @ 8227.0ft (H&P 318)
<b>Project:</b>	Mesa	<b>MD Reference:</b>	Puckett 31C-36D KBE @ 8227.0ft (H&P 318)
<b>Site:</b>	NESW Sec 36-T6S-R97W	<b>North Reference:</b>	True
<b>Well:</b>	Puckett 31C-36D	<b>Survey Calculation Method:</b>	Minimum Curvature
<b>Wellbore:</b>	DD		
<b>Design:</b>	Plan #1		

Planned Survey											
Measured Depth (ft)	Inclination (°)	Azimuth (°)	Vertical Depth (ft)	Subsea Depth (ft)	+N/-S (ft)	+E/-W (ft)	Vertical Section (ft)	Dogleg Rate (°/100ft)	Build Rate (°/100ft)	Turn Rate (°/100ft)	
8,500.0	0.89	215.09	8,417.3	190.3	480.8	869.9	994.0	0.00	0.00	0.00	
8,600.0	0.89	215.09	8,517.2	290.2	479.5	869.1	992.6	0.00	0.00	0.00	
8,700.0	0.89	215.09	8,617.2	390.2	478.2	868.2	991.2	0.00	0.00	0.00	
<b>Rollins</b>											
8,789.8	0.89	215.09	8,707.0	480.0	477.1	867.3	989.9	0.00	0.00	0.00	
8,800.0	0.89	215.09	8,717.2	490.2	477.0	867.3	989.8	0.00	0.00	0.00	
8,900.0	0.89	215.09	8,817.2	590.2	475.7	866.4	988.4	0.00	0.00	0.00	
<b>TD = 8989.8' MD - Puckett 31C-36D BHL</b>											
8,989.8	0.89	215.09	8,907.0	680.0	474.5	865.6	987.1	0.00	0.00	0.00	

Design Targets									
Target Name	Dip Angle (°)	Dip Dir. (°)	TVD (ft)	+N/-S (ft)	+E/-W (ft)	Northing (ft)	Easting (ft)	Latitude	Longitude
Puckett 31C-36D Tgt - hit/miss target - Shape - Point	0.00	0.00	6,807.0	499.1	882.8	1,612,598.12	2,247,533.11	39° 29' 6.143 N	108° 9' 59.020 W
Puckett 31C-36D BHL - plan hits target center - Circle (radius 60.0)	0.00	0.00	8,907.0	474.5	865.6	1,612,574.08	2,247,515.14	39° 29' 5.900 N	108° 9' 59.240 W

Casing Points					
Measured Depth (ft)	Vertical Depth (ft)	Name	Casing Diameter (")	Hole Diameter (")	
2,729.7	2,700.0	Surface Casing			

Formations						
Measured Depth (ft)	Vertical Depth (ft)	Name	Lithology	Dip (°)	Dip Direction (°)	
1,945.6	1,927.0	Wasatch				
4,329.4	4,277.0	Wasatch "G" Sand				
4,633.7	4,577.0	Fort Union				
4,958.3	4,897.0	Base Fort Union				
5,749.5	5,677.0	Mesaverde/Williams Fk	*			
6,889.6	6,807.0	Top Gas Cell				
8,289.7	8,207.0	Cameo				
8,789.8	8,707.0	Rollins				

Database:	RMR1 Database	Local Co-ordinate Reference:	Well Puckett 31C-36D
Company:	Petroleum Development Corp.	TVD Reference:	Puckett 31C-36D KBE @ 8227.0ft (H&P 318)
Project:	Mesa	MD Reference:	Puckett 31C-36D KBE @ 8227.0ft (H&P 318)
Site:	NESW Sec 36-T6S-R97W	North Reference:	True
Well:	Puckett 31C-36D	Survey Calculation Method:	Minimum Curvature
Wellbore:	DD		
Design:	Plan #1		

Plan Annotations				
Measured Depth (ft)	Vertical Depth (ft)	Local Coordinates		Comment
		+N/-S (ft)	+E/-W (ft)	
200.0	200.0	0.0	0.0	KOP @ 200'
843.6	840.5	26.6	47.1	EOB = 9.65° Inc
6,246.0	6,166.5	472.5	835.7	Start of Drop
6,889.6	6,807.0	499.1	882.8	EOD = 0° Inc
8,989.8	8,907.0	474.5	865.6	TD = 8989.8' MD