

# T6S, R97W, 6th P.M.

# PETROLEUM DEVELOPMENT CORP.

Well location, PUCKETT #22A-36D, located as shown in the Lot 3 of Section 36, T6S, R97W, 6th P.M., Garfield County, Colorado.

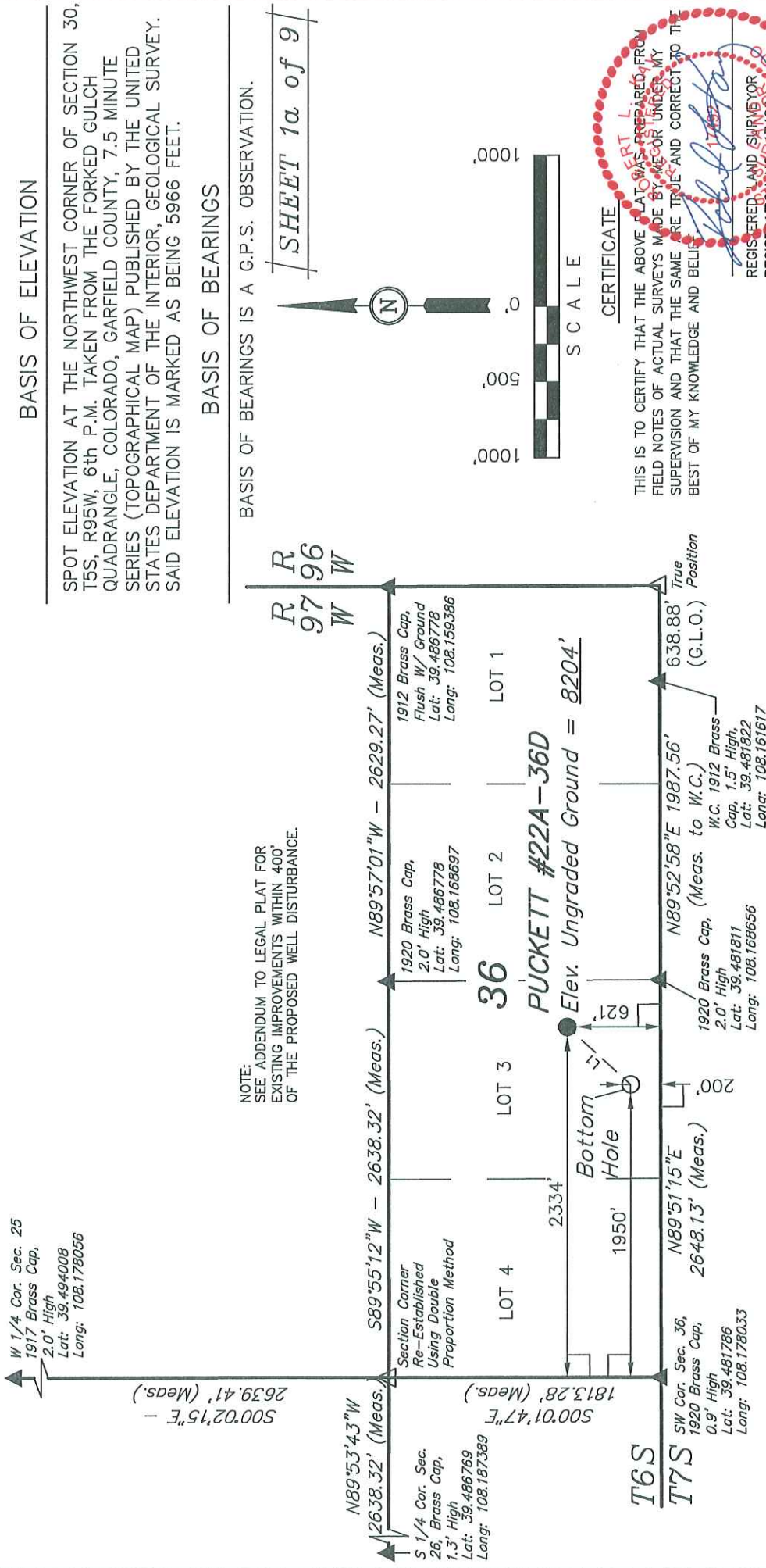
## BASIS OF ELEVATION

SPOT ELEVATION AT THE NORTHWEST CORNER OF SECTION 30, T5S, R95W, 6th P.M. TAKEN FROM THE FORKED GULCH QUADRANGLE, COLORADO, GARFIELD COUNTY, 7.5 MINUTE SERIES (TOPOGRAPHICAL MAP) PUBLISHED BY THE UNITED STATES DEPARTMENT OF THE INTERIOR, GEOLOGICAL SURVEY. SAID ELEVATION IS MARKED AS BEING 5966 FEET.

## BASIS OF BEARINGS

BASIS OF BEARINGS IS A G.P.S. OBSERVATION.

NOTE: SEE ADDENDUM TO LEGAL PLAT FOR EXISTING IMPROVEMENTS WITHIN 400' OF THE PROPOSED WELL DISTURBANCE.



SHEET 1a of 9

R 97 W  
R 96 W



### CERTIFICATE

THIS IS TO CERTIFY THAT THE ABOVE PLAT WAS PREPARED FROM FIELD NOTES OF ACTUAL SURVEYS MADE BY ME OR UNDER MY SUPERVISION AND THAT THE SAME ARE TRUE AND CORRECT TO THE BEST OF MY KNOWLEDGE AND BELIEF.

REGISTERED LAND SURVEYOR  
STATE OF COLORADO  
REGISTRATION NO. 17492  
COLOGRADO

Revised: 02-25-10

<b>UNTAH ENGINEERING &amp; LAND SURVEYING</b>	
85 SOUTH 200 EAST - VERNAL, UTAH 84078 (435) 789-1017	
SCALE 1" = 1000'	DATE SURVEYED: 05-29-09
PARTY B.H. G.O. K.G.	DATE DRAWN: 06-01-09
WEATHER WARM	REFERENCES G.L.O. PLAT
FILE	PETROLEUM DEVELOPMENT CORP.

LINE	DIRECTION	LENGTH
L1	S42°15'12"W	570.73'

PDOP = 1.9
------------

**LEGEND:**

- = 90° SYMBOL
- = PROPOSED WELL HEAD.
- ▲ = SECTION CORNERS LOCATED

NAD 83 (TARGET BOTTOM HOLE)	NAD 83 (SURFACE LOCATION)
LATITUDE = 39°28'56.47" (39.482353)	LATITUDE = 39°29'00.65" (39.483514)
LONGITUDE = 108°10'16.06" (108.171128)	LONGITUDE = 108°10'11.17" (108.169769)
NAD 27 (TARGET BOTTOM HOLE)	NAD 27 (SURFACE LOCATION)
LATITUDE = 39°28'56.55" (39.482375)	LATITUDE = 39°29'00.73" (39.483536)
LONGITUDE = 108°10'13.77" (108.170492)	LONGITUDE = 108°10'08.88" (108.169133)