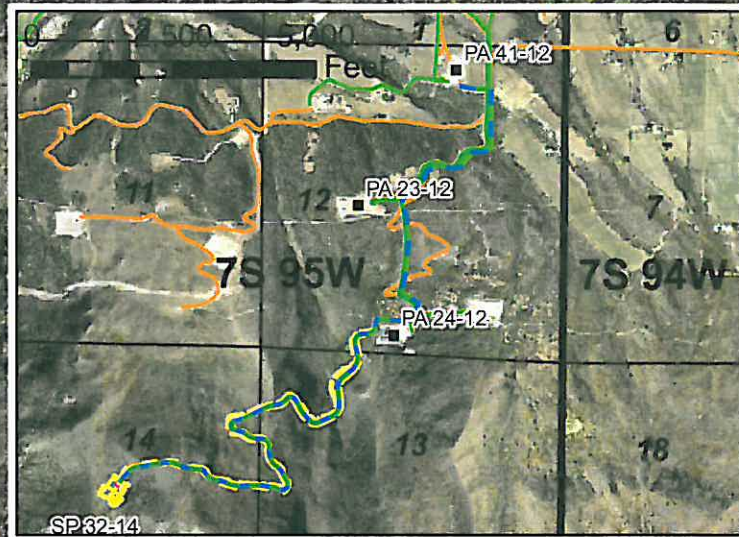


### Geologist Information

General: New location, 16 wells (2 first)  
Ownership: FED surface/ FED minerals  
SUA Status: N/A  
Spacing Units: Section 14 – 640 acre unit  
Adjacent Owners: 11795 LLC, BLM



New Lines to PA 24-12  
12" - Gas  
6" - Water  
4" - Water  
2 - 2" - Condensate

### Plan of Development

Access: Use access from north east as shown  
Drilling: Conventional rig (efficiency rig – 2<sup>nd</sup> visit)  
Cuttings: In trench on location. If more room is needed, cuttings will be taken to trench on PA 23-12 pad.  
SIMOPS: No (Yes, for efficiency visit)  
Completion: Frac on pad (Remote frac pad TBD for efficiency visit)  
Flowback: on pad (TBD for efficiency visit)  
Prod Equip: Production equipment to be on NE side of pad.  
Pipeline: New 12" gas/ 4" and 6" water/ 2 - 2" condensate lines to be run from pad, along access road and tie into lines at the PA 24-12 pad.  
Water and condensate to be piped to Doghead tank pad (near PA 41-12 pad).

### Legend

- Proposed Road
- Proposed Pipeline Alignment
- Proposed Production Equipment Area
- Pipeline (Valley)
- Proposed Daylight Line
- Existing Road
- Proposed Pad or Pit

Williams Production RMT

SP 32-14 Plan of Development  
T7S R95W, Section 14

Date Prepared: April 21, 2010

