

Federal SP 32-14

SP 331-14, SP 431-14, SP 531-14, SP 32-14, SP 332-14, SP 432-14,
SP 532-14, SP 542-14, SP 31-14, SP 41-14, SP 341-14, SP 441-14,
SP 541-14, SP 42-14, SP 342-14, SP 442-14



PHOTO: VIEW FROM PAD CENTER

CAMERA ANGLE: NORTH



PHOTO: VIEW FROM PAD CENTER

CAMERA ANGLE: SOUTH

136 East Third Street
Rifle, Colorado 81650
Ph. (970) 625-1330
Fax (970) 625-2773



BOOKCLIFF
Survey Services, Inc.

REVISED: 4/30/10

PHOTO DATE: 2/3/10

TAKEN BY: JK

DRAWN BY: DPM

SHEET: 1 of 3

PROJECT: Williams

LOCATION PHOTOS Prepared for:

Williams Williams Production, RMT

SW1/4 NE1/4, SECTION 14

T. 7 S., R. 95 W. of the 6th. P.M.

GARFIELD COUNTY, COLORADO

Federal SP 32-14

SP 331-14, SP 431-14, SP 531-14, SP 32-14, SP 332-14, SP 432-14,
SP 532-14, SP 542-14, SP 31-14, SP 41-14, SP 341-14, SP 441-14,
SP 541-14, SP 42-14, SP 342-14, SP 442-14



PHOTO: VIEW FROM PAD CENTER

CAMERA ANGLE: EAST



PHOTO: VIEW FROM PAD CENTER

CAMERA ANGLE: WEST

REVISED: 4/30/10

PHOTO DATE: 2/3/10
TAKEN BY: JK
DRAWN BY: DPM
SHEET: 2 of 3
PROJECT: Williams

LOCATION PHOTOS Prepared for:
Williams. Williams Production, RMT

SW1/4 NE1/4, SECTION 14
T. 7 S., R. 95 W. of the 6th. P.M.
GARFIELD COUNTY, COLORADO

136 East Third Street
Rifle, Colorado 81650
Ph. (970) 625-1330
Fax (970) 625-2773

BOOKCLIFF
Survey Services, Inc.

Federal SP 32-14

SP 331-14, SP 431-14, SP 531-14, SP 32-14, SP 332-14, SP 432-14,
SP 532-14, SP 542-14, SP 31-14, SP 41-14, SP 341-14, SP 441-14,
SP 541-14, SP 42-14, SP 342-14, SP 442-14



PHOTO: VIEW OF OVERALL DRILL PAD

CAMERA ANGLE: SOUTHEASTERLY

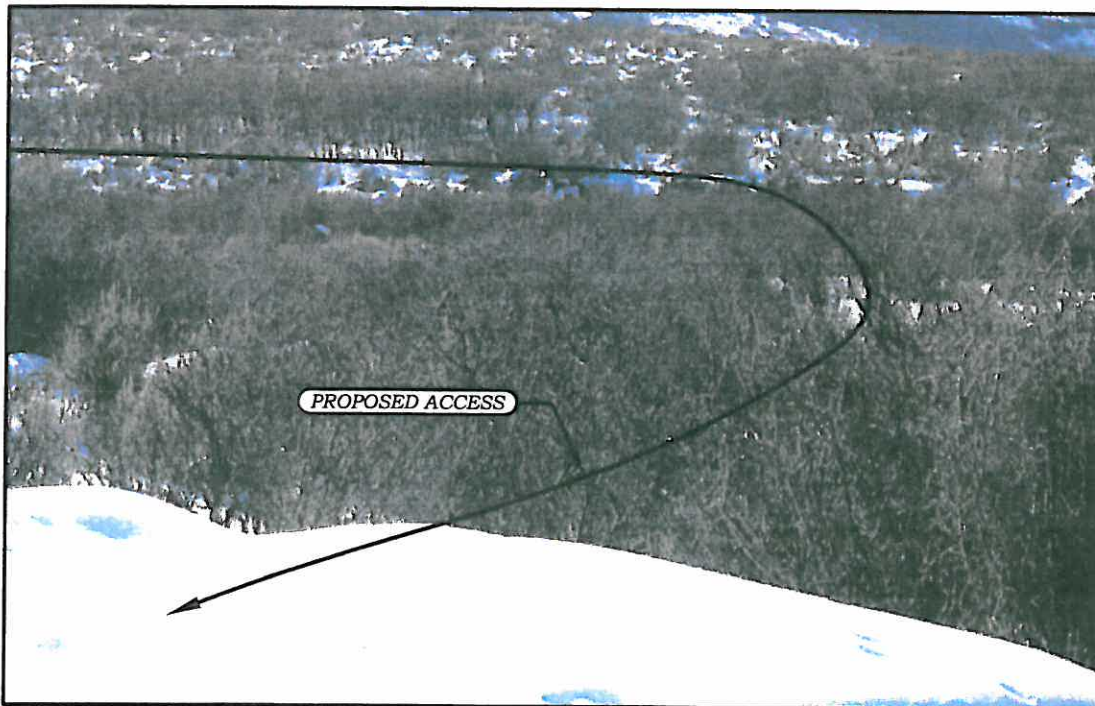


PHOTO: VIEW OF PROPOSED ACCESS ROAD

CAMERA ANGLE: SOUTHEASTERLY

136 East Third Street
Rifle, Colorado 81650
Ph. (970) 625-1330
Fax (970) 625-2773



BOOKCLIFF
Survey Services, Inc.

REVISED: 4/30/10

PHOTO DATE: 2/3/10

TAKEN BY: JK

DRAWN BY: DPM

SHEET: 3 of 3

PROJECT: Williams

LOCATION PHOTOS Prepared for:
Williams. Williams Production, RMT

SW1/4 NE1/4, SECTION 14
T. 7 S., R. 95 W. of the 6th. P.M.
GARFIELD COUNTY, COLORADO