


Map to Accompany
APPLICATION FOR PERMIT TO DRILL
Pipeline Map

Mesa Energy Partners LLC
Buckhorn Draw Unit 1-2-199
NE/4 NW/4 Sec. 1 T1S R99W
Rio Blanco County, Colorado
Mineral Lease: COC62815

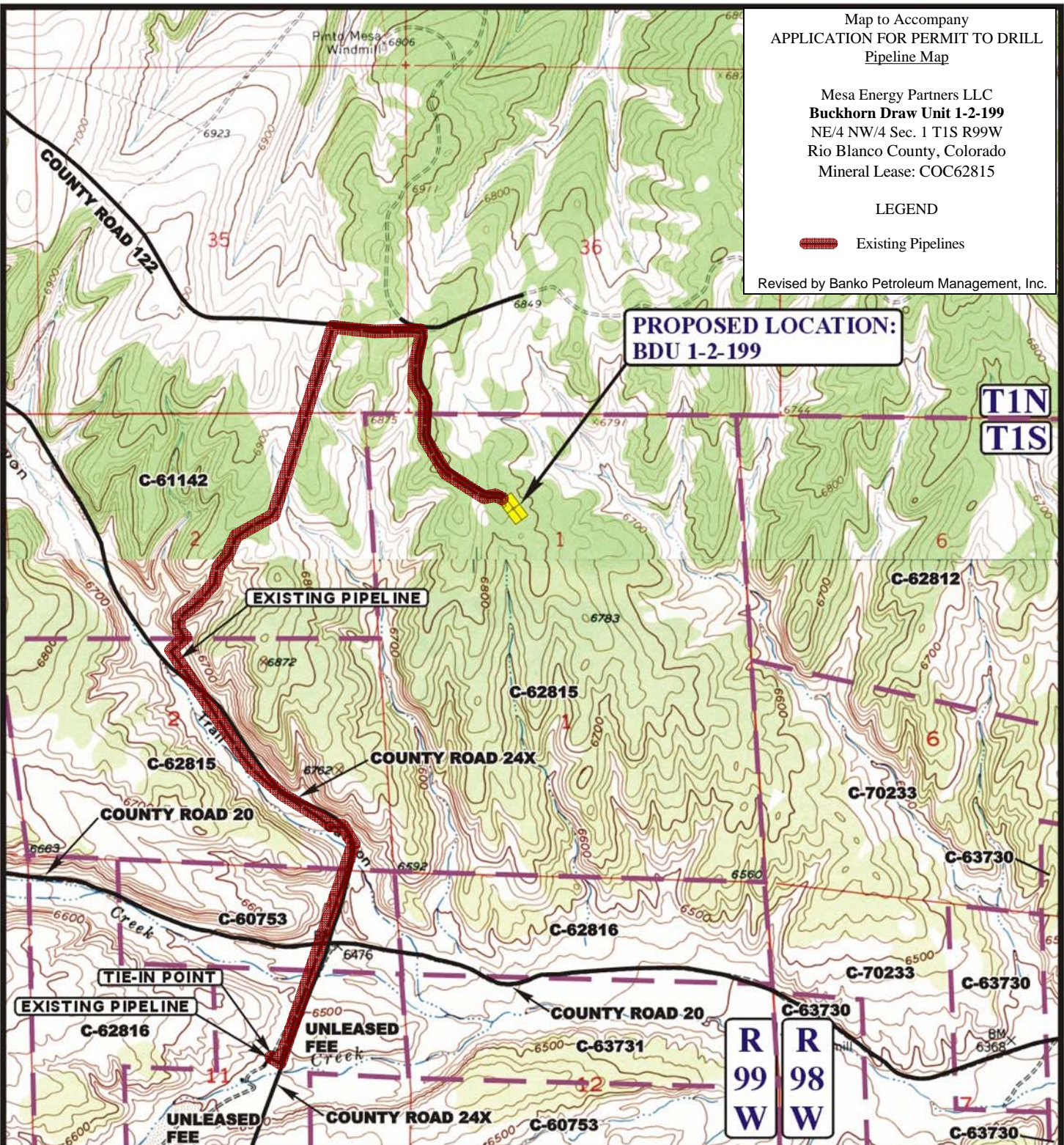
LEGEND

 Existing Pipelines

Revised by Banko Petroleum Management, Inc.

**PROPOSED LOCATION:
BDU 1-2-199**

**T1N
T1S**



APPROXIMATE TOTAL PIPELINE DISTANCE = 17,242' +/-

LEGEND:

----- EXISTING PIPELINE
----- EXISTING ROAD

MESA ENERGY PARTNERS, LLC

BDU 1-2-199
SECTION 1, T1S, R99W, 6th P.M.
LOT 7

SHEET 13 OF 17



Utah Engineering & Land Surveying
85 South 200 East Vernal, Utah 84078
(435) 789-1017 * FAX (435) 789-1813



TOPOGRAPHIC MAP
05 05 09
MONTH DAY YEAR
SCALE: 1" = 2000' DRAWN BY: J.L.G. REVISED: 05-13-10

