
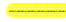



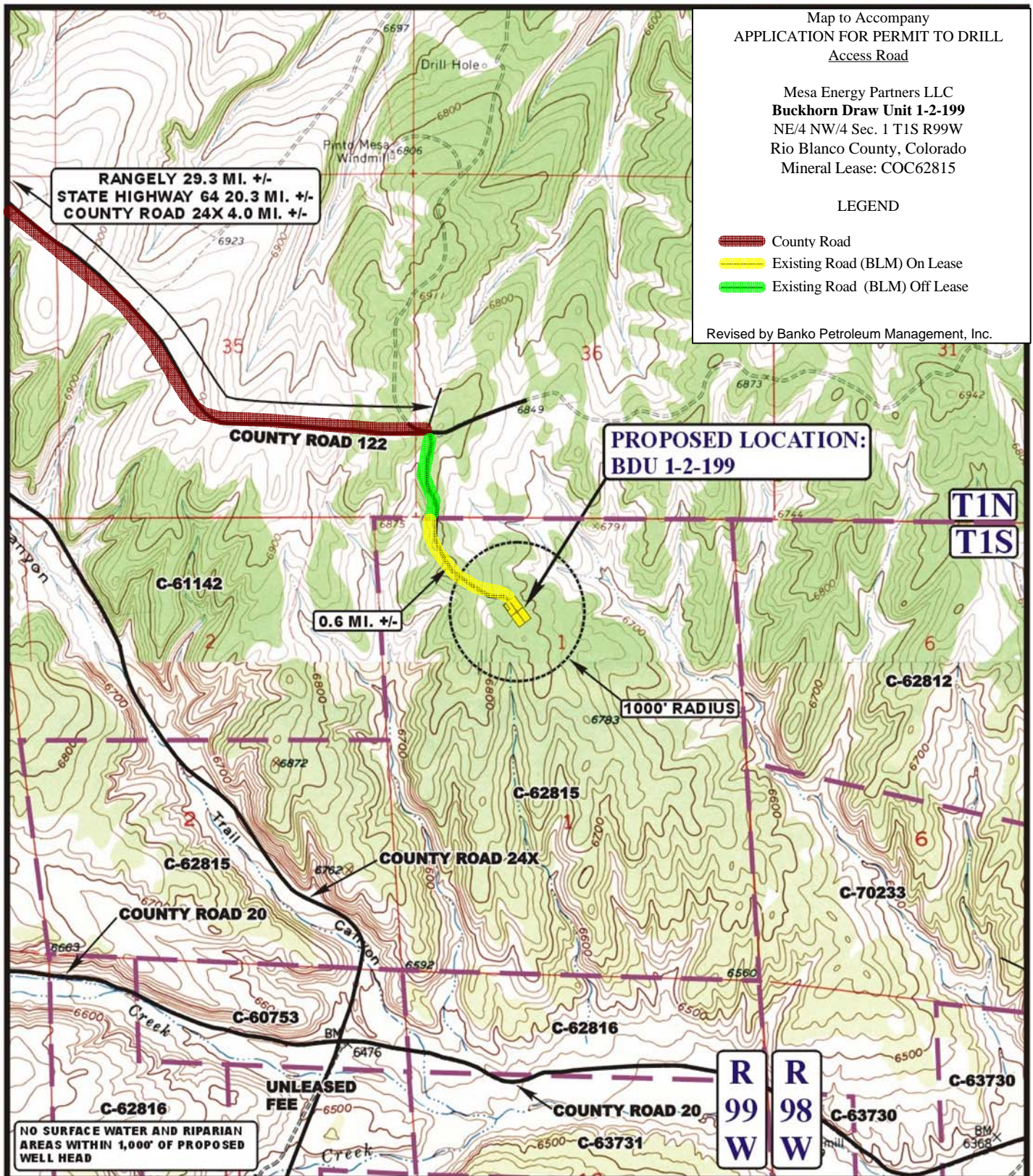
Map to Accompany
APPLICATION FOR PERMIT TO DRILL
Access Road

Mesa Energy Partners LLC
Buckhorn Draw Unit 1-2-199
NE/4 NW/4 Sec. 1 T1S R99W
Rio Blanco County, Colorado
Mineral Lease: COC62815

LEGEND

-  County Road
-  Existing Road (BLM) On Lease
-  Existing Road (BLM) Off Lease

Revised by Banko Petroleum Management, Inc.



LEGEND:

 EXISTING ROAD



Mesa Energy Partners LLC

BDU 1-2-199
SECTION 1, T1S, R99W, 6th P.M.
LOT 7

SHEET 11 OF 17



Uintah Engineering & Land Surveying
85 South 200 East Vernal, Utah 84078
(435) 789-1017 * FAX (435) 789-1813

TOPOGRAPHIC
MAP

05 **05** **09**
MONTH DAY YEAR

SCALE: 1" = 2000' DRAWN BY: J.L.G. REVISED: 05-13-10

B
TOPO