

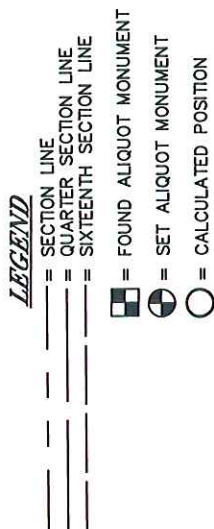
McCOUTCHEONS Y8 7-5-31

WELL LOCATION

LOCATION
SE $\frac{1}{4}$ NW $\frac{1}{4}$ SEC. 31, T.5N., R.65W.

See Visible Improvements Exhibit
for all visible improvements within
200' of wellhead.

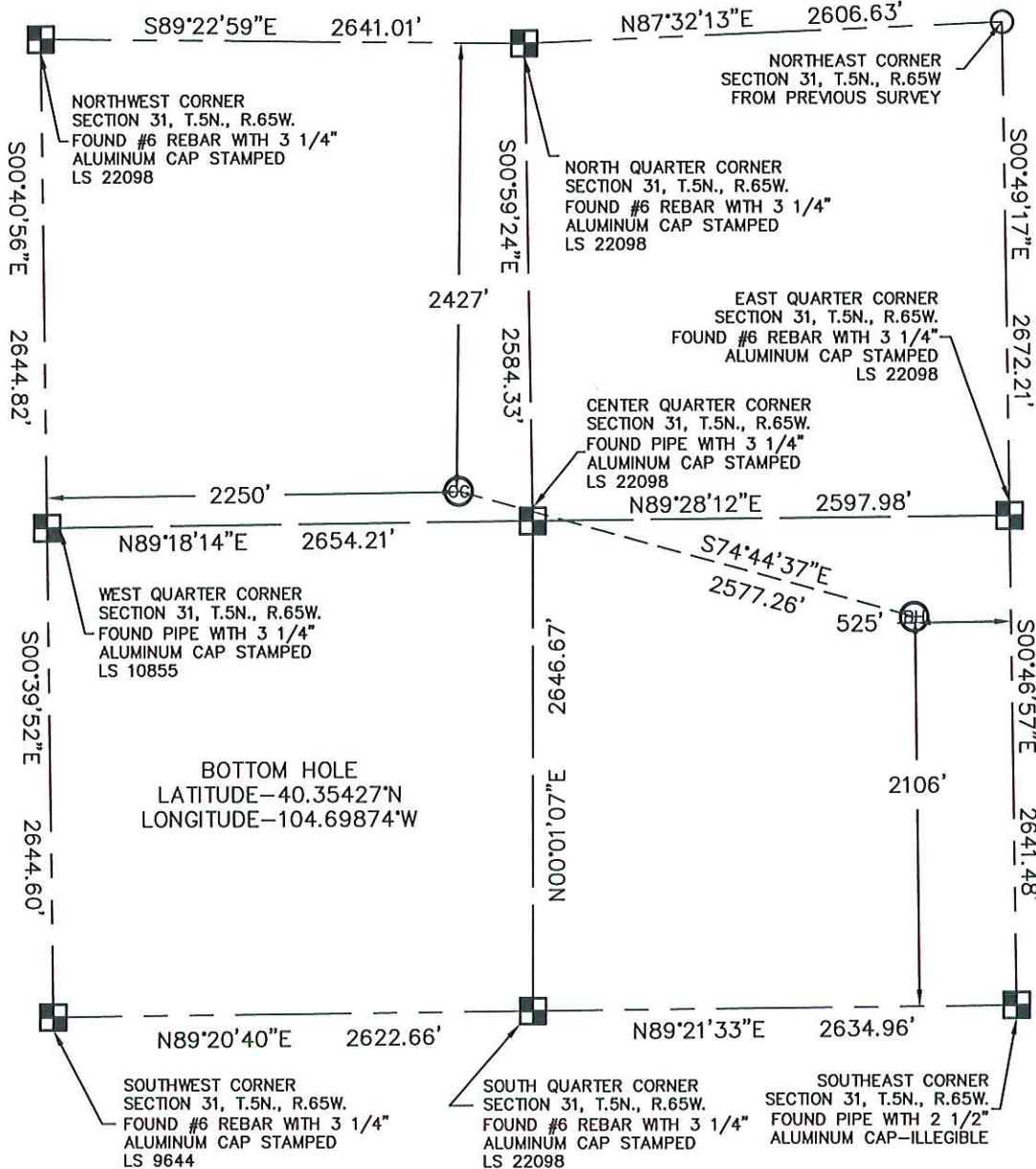
SURFACE USE—HARVESTED
CORN FIELD
LATITUDE—40.35619°N
LONGITUDE—104.70764°W
ELEVATION = 4658'
PDOP READING—2.7



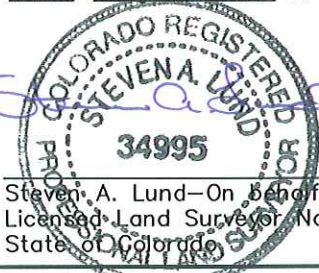
All distances to section lines
are measured perpendicular to
said section lines.

Ground elevation shown is
approximate and is based on
an observed GPS elevation
(NAVD 1988 DATUM).

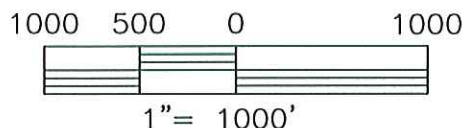
Bearings shown are Grid
Bearings of the Colorado State
Plane Coordinate System,
North Zone, North American
Datum 1983/92.



King Surveyors Inc. of Windsor, Colorado has in accordance with a request from Collin Richardson for Mineral Resources Inc. determined the surface location of McCOUTCHEONS Y8 7-5-31 to be 2427' from the North line and 2250' from the West line and the Bottom Hole to be 525' from the East line and 2106' from the South line of Section 31, Township 5 North, Range 65 West of the Sixth Principal Meridian, County of Weld, State of Colorado.



Steven A. Lund—On Behalf of King Surveyors, Inc.
Licensed Land Surveyor No. 34995
State of Colorado



KING SURVEYORS, INC.

650 Garden Drive | Windsor, Colorado 80550
phone: (970) 686-5011 | fax: (970) 686-5821
www.kingsurveyors.com

PROJECT NO: 2007482

DATE: 10-10-08

CLIENT: MINERAL RESOURCES

DWG: 2007482WELLEXHIBIT_Z

FIELD OPERATOR: DALLAS NIELSEN

DATE OF WORK: 2/7/08