

SECTION 11  
TOWNSHIP 11 NORTH  
RANGE 61 WEST



- 1) BASIS OF BEARINGS FOR THIS MAP ARE BASED UPON GPS OBSERVATIONS MADE ON 10/16/2009 BETWEEN MONUMENT LOCATED AT THE NORTHWEST SECTION CORNER AND THE NORTHEAST SECTION CORNER OF SAID SECTION AND WITH ALL BEARINGS SHOWN HEREON RELATIVE THERETO.
- 2) ELEVATIONS ARE BASED UPON AA 169 BENCHMARK IN THE NE1/4 OF SECTION 32, T11N, R61W ELEV=5122.96' NGVD29 DATUM.
- 3) SEE VISIBLE IMPROVEMENTS EXHIBIT FOR ALL IMPROVEMENTS WITHIN 600'.
- 4) THE LOCATION FALLS IN WHEAT FIELD.

LATITUDE: N 40.94181  
LONGITUDE: W 104.16500  
PDOP: 2.0  
QUARTER-QUARTER: NE1/4NE1/4  
NEAREST PROPERTY LINE: 660' NORTH  
AND EAST

⑤ PROPOSED SURFACE LOCATION

== == == == ROAD

— × — × — FENCE

CALCULATED DIMENSIONS  
ARE IN PARENTHESES

GPS OPERATOR: DARREN VEAL  
DWG NO. 1171-09

NOTICE: According to Colorado law you MUST commence any legal action based upon any defect in the W.L.C. within three years after you first discover such defect. In no event may only action based upon any defect in this W.L.C. be commenced more than ten years from this sold date of the certification shown hereon.

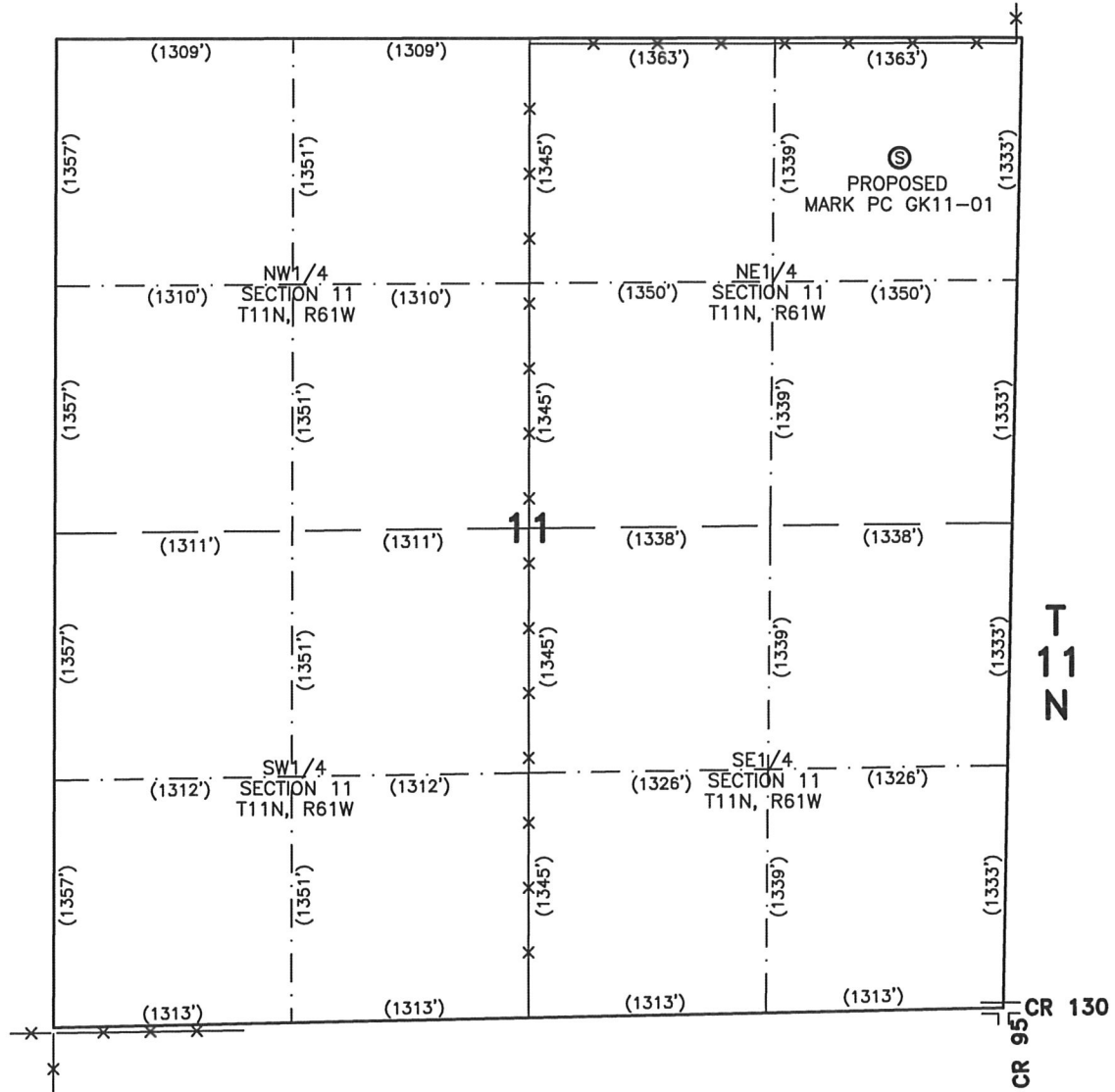
NICOLE F. HAY  
 FOR AND ON BEHALF OF  
 LEIBERT-McATEE & ASSOCIATES, INC  
 P.L.S. 38044

COMPLETED 4-15-10

# SITE SKETCH – MARK PC GK11-01

R 61 W

SECTION 11  
TOWNSHIP 11 NORTH  
RANGE 61 WEST



NOTES:  
1) THIS SKETCH DOES NOT REPRESENT A BOUNDARY SURVEY.



SCALE: 1"=1000'

0 500 1000



SCALE IN FEET

## LEGEND

Ⓢ PROPOSED SURFACE LOCATION

== == == ROAD

-x-x- FENCE

CALCULATED DIMENSIONS  
ARE IN PARENTHESES