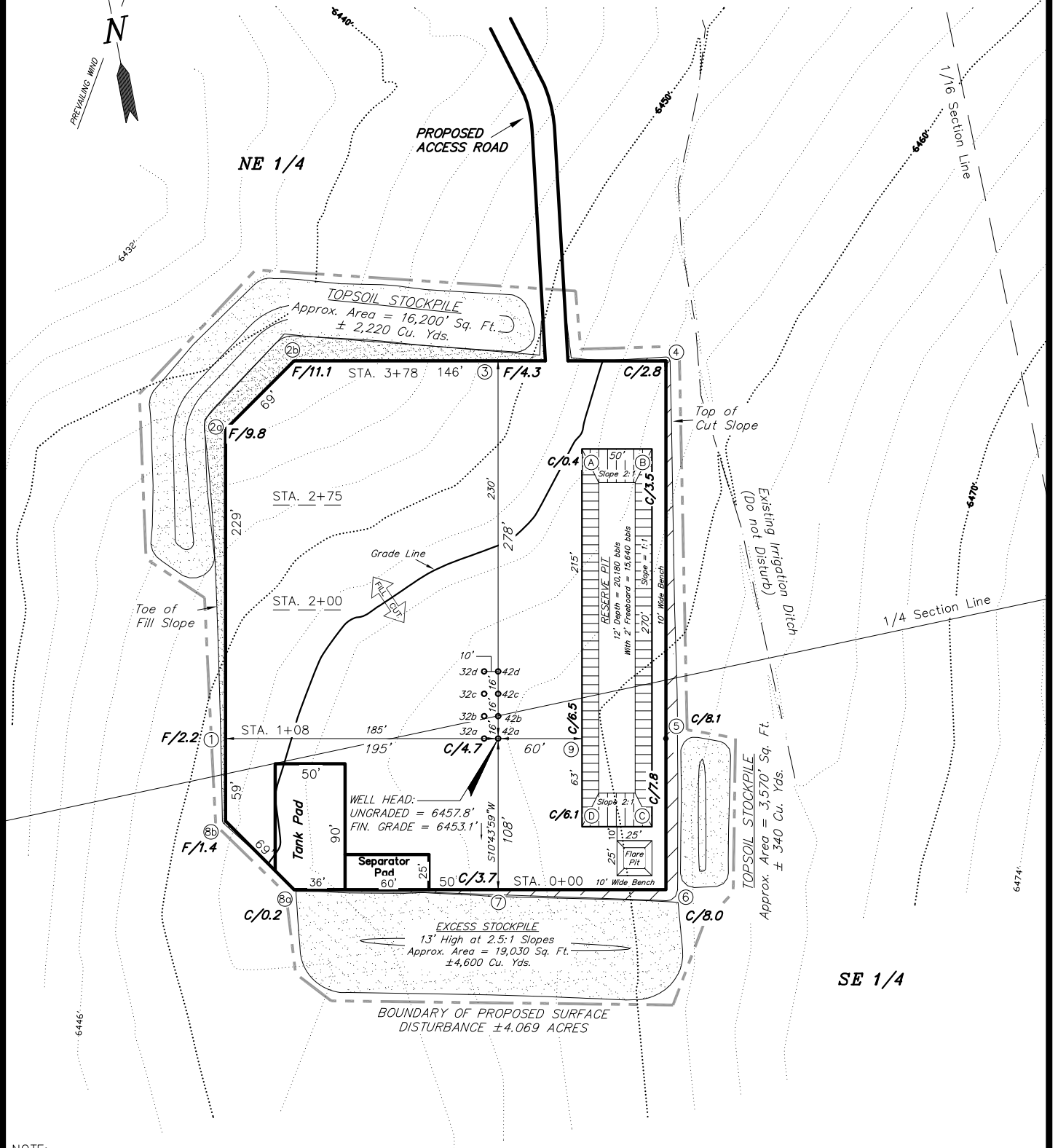


BILL BARRETT CORP.

LOCATION LAYOUT

WELL PAD: (MDP PAD #13)
Section 20, T6S, R91W, 6th P.M.



NOTE:

The Topsoil, Pit Stockpile & Waste Material areas are calculated as being mounds containing 7,180 cubic yards of dirt (a 10% fluff factor is included). The mound areas are calculated with push slopes of 2.5:1 & fall slopes of 2.5:1.

SURVEYED BY: K.S.	DATE SURVEYED: 06-06-05
DRAWN BY: F.T.M.	DATE DRAWN: 06-13-08
SCALE: 1" = 100'	REVISED: F.T.M. 12-29-09

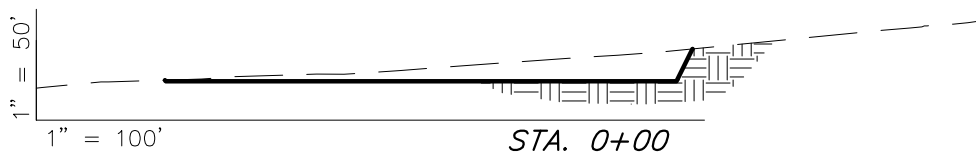
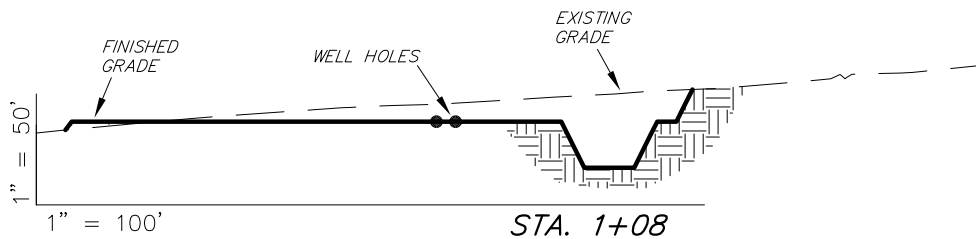
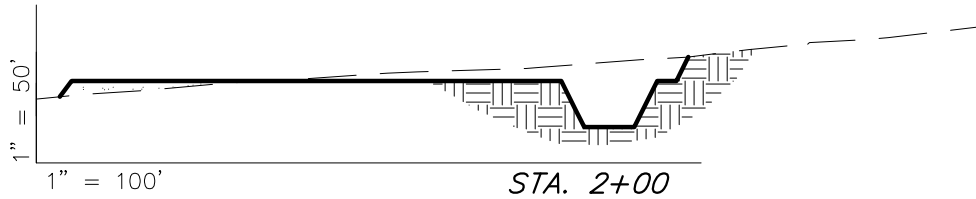
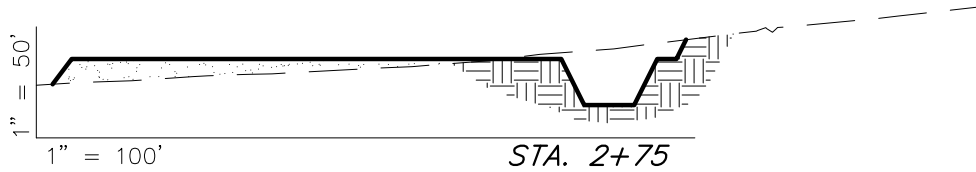
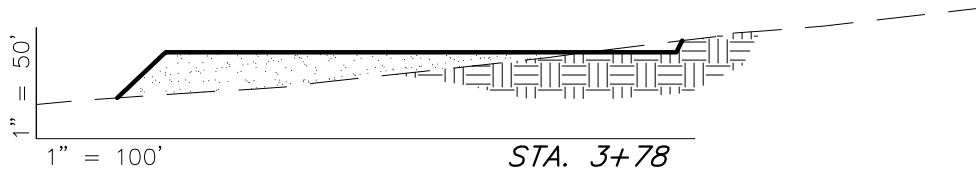
Tri State
Land Surveying, Inc.
180 NORTH VERNAL AVE. VERNAL, UTAH 84078
(435) 781-2501

SHEET
4
OF 12

BILL BARRETT CORP.

CROSS SECTIONS

WELL PAD: (MDP PAD #13)
Section 20, T6S, R91W, 6th P.M.



NOTE:
UNLESS OTHERWISE NOTED CUT SLOPES ARE AT 1:1 FILL SLOPES ARE AT 1.5:1

SURFACE DISTURBANCE AREA	SECTION 20, T6S, R91W, 6th P.M.
WELL SITE & PRODUCTION FACILITY	±4.069 ACRES
TOTAL DISTURBANCE	±4.069 ACRES
PROPOSED ACCESS ROAD DISTANCES	SECTION 20, T6S, R91W, 6th P.M.
PROPOSED PAD ACCESS ROAD (NEW CONST.)	1,320'
TOTAL DISTANCE	1,320'

ESTIMATED EARTHWORK QUANTITIES (No Shrink or swell adjustments have been used) (Expressed in Cubic Yards)				
ITEM	CUT	FILL	6" TOPSOIL	EXCESS
PITS	4,200	0	Topsoil is not included in Pad Cut	4,200
PAD	8,160	8,160	2,330	0
TOTALS	12,360	8,160	2,330	4,200

SURVEYED BY: K.S. DATE SURVEYED: 06-06-05
DRAWN BY: F.T.M. DATE DRAWN: 06-13-08
SCALE: 1" = 100' REVISED: F.T.M. 05-04-09

Tri State
Land Surveying, Inc.
180 NORTH VERNAL AVE. VERNAL, UTAH 84078
(435) 781-2501

SHEET
5
OF 12

BILL BARRETT CORP.

TYPICAL RIG LAYOUT

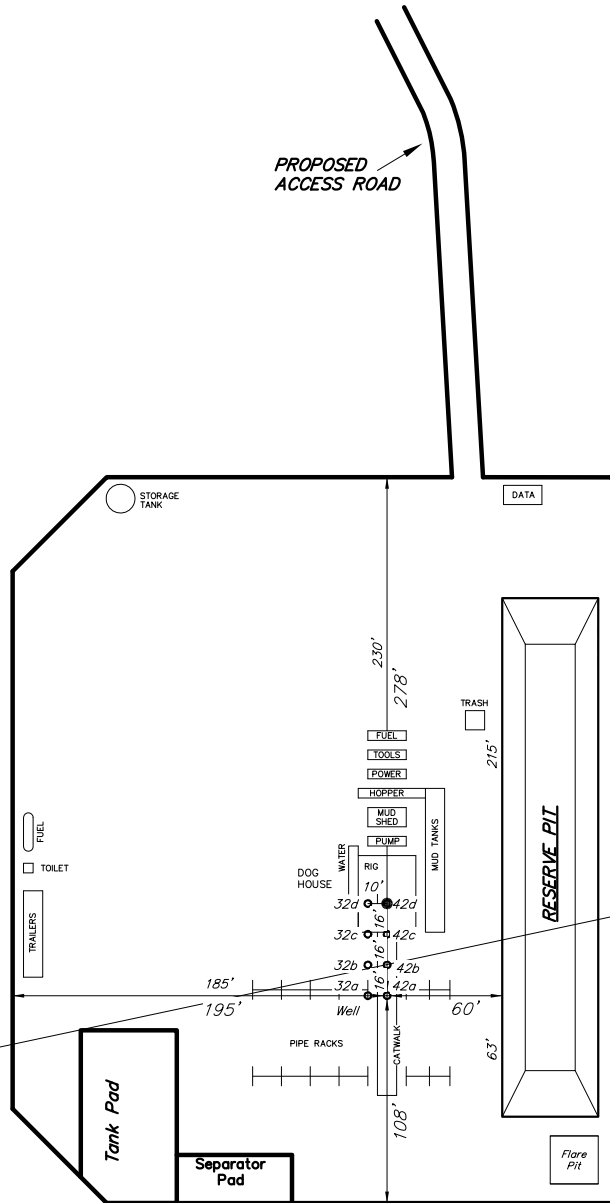
WELL PAD: (MDP PAD #13)
Section 20, T6S, R91W, 6th P.M.



PROPOSED
ACCESS ROAD

1/16 Section Line

1/4 Section Line



FLARE PIT NOTE:
Maintain 100' Min.
Distance from The
Proposed Well Heads.

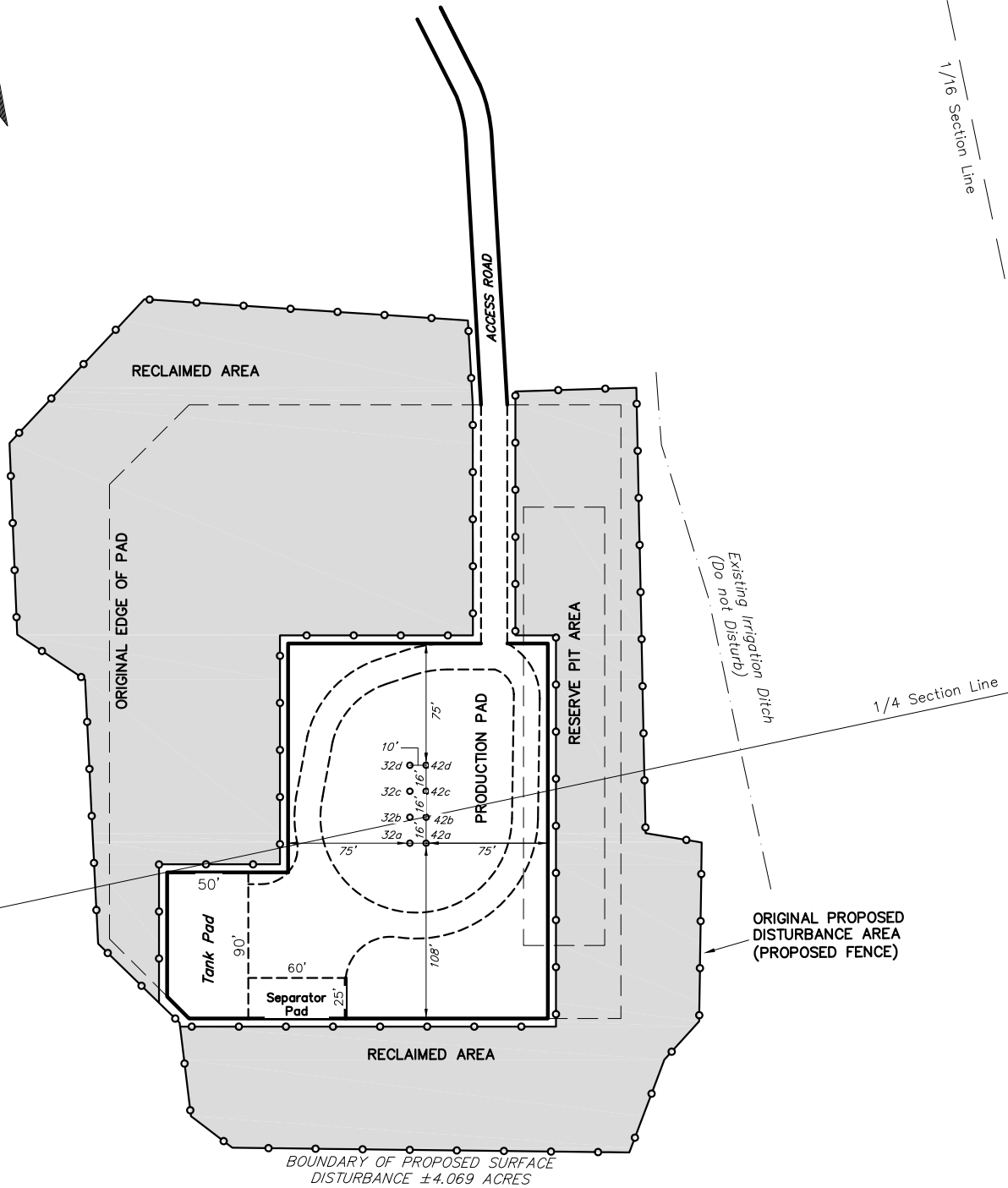
SURVEYED BY: C.D.S.	DATE SURVEYED: 10-15-07
DRAWN BY: F.T.M.	DATE DRAWN: 04-30-08
SCALE: 1" = 100'	REVISED: F.T.M. 05-22-09

Tri State
Land Surveying, Inc.
180 NORTH VERNAL AVE. VERNAL, UTAH 84078
(435) 781-2501

SHEET
6
OF 12

BILL BARRETT CORP. TYPICAL PLAN OF RECLAMATION

WELL PAD: (MDP PAD #13)
Section 20, T6S, R91W, 6th P.M.



DISTURBED AREA:

TOTAL DISTURBED AREA = 4.069 ACRES
TOTAL RECLAIMED AREA = 2.84 ACRES
UNRECLAIMED AREA = 1.20 ACRES

NOTE: RECLAIMED AREA TO INCLUDE SEEDING OF APPROVED VEGETATION AND SUFFICIENT STORM WATER MANAGEMENT SYSTEM.

SURVEYED BY: K.S.	DATE SURVEYED: 06-06-05
DRAWN BY: F.T.M.	DATE DRAWN: 06-04-08
SCALE: 1" = 100'	REVISED: F.T.M. 12-29-09

Tri State
Land Surveying, Inc.
(435) 781-2501
180 NORTH VERNAL AVE. VERNAL, UTAH 84078

SHEET
7
OF 12