

Location Drawing with 400' Radius

There are no Apparent Improvements
Within 400' of the Staked Location
SURFACE USE: RANGELAND
VEGETATION: NATIVE GRASSLAND

Western Land Surveying of Sheridan, Wyoming, in accordance with a request from Slawson Exploration Company, Inc, has determined the location of Mousetrap 36-11-66 to be 605 feet FEL, and 605 feet FSL, (90° off Section Lines) of Section 36, Township 11N, Range 66W, of the 6th Principal Meridian, Weld County, Colorado.

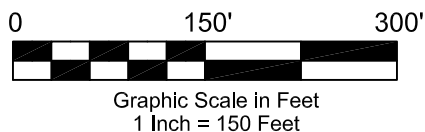
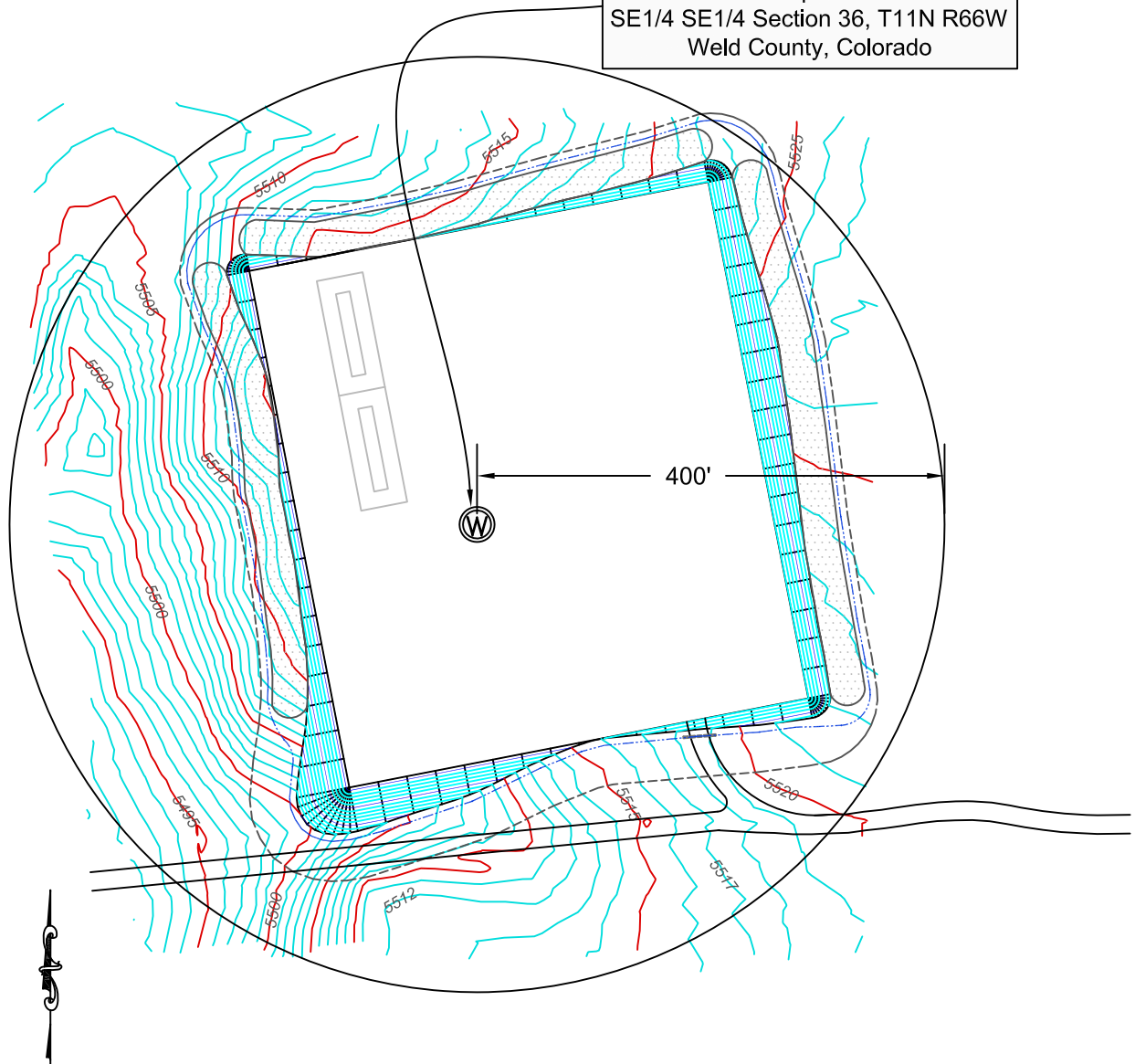
Date: Staked on 4/02/2010, drawn on 5/04/2010

Staked by: Daniel King

Drawn by: Heather Hairston

Revised: 5/06/2010

Slawson Exploration Company, Inc.
Mousetrap 36-11-66
SE1/4 SE1/4 Section 36, T11N R66W
Weld County, Colorado




WESTERN LAND SERVICES
Sheridan, WY 82801 (307)673-1817

Slawson Exploration Company, Inc.
Mousetrap 36-11-66

SE1/4 SE1/4 Section 36, T11N R66W
6TH PM, WELD COUNTY, COLORADO