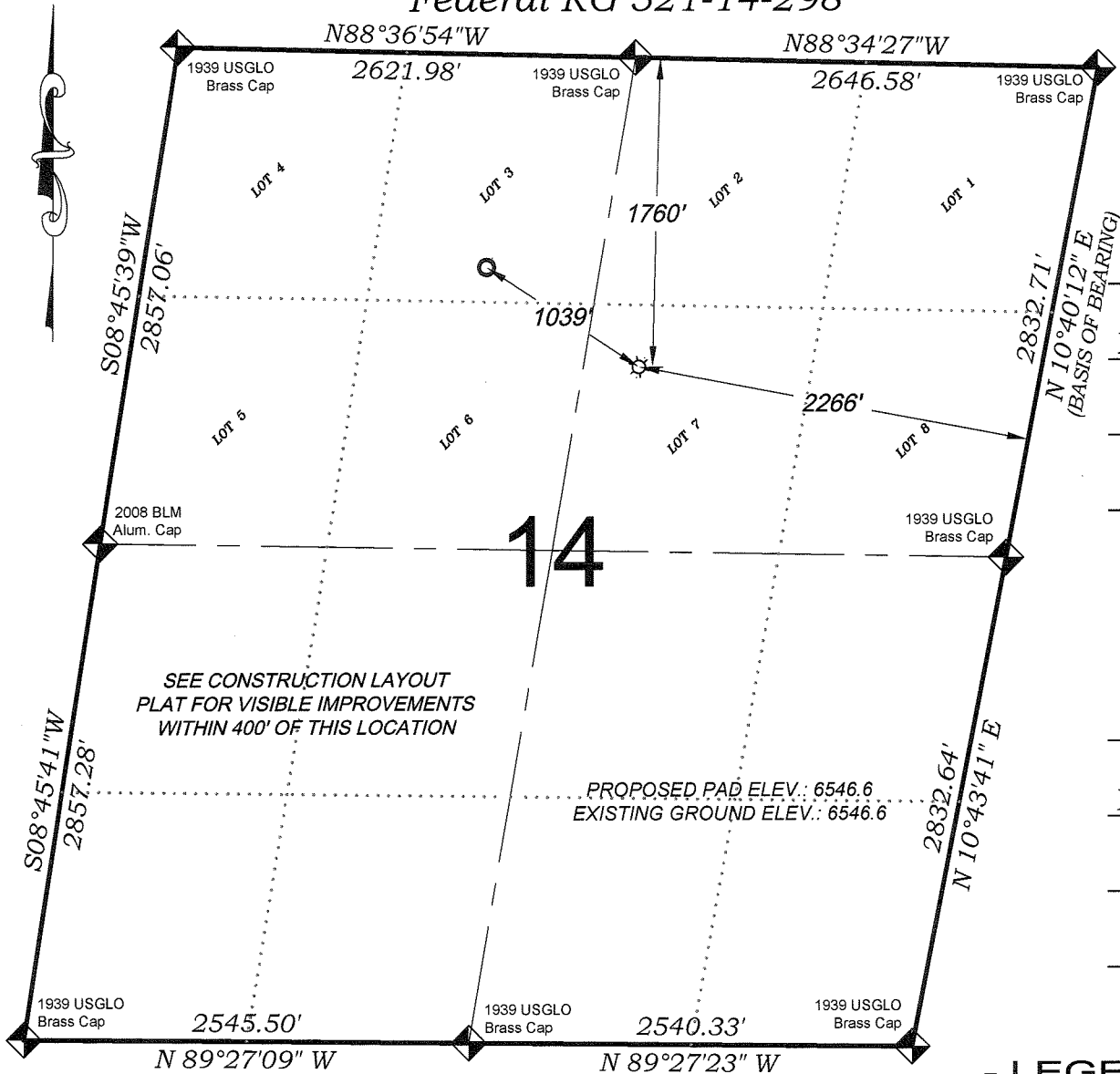


# Federal RG 521-14-298



**SHL**  
1760 FNL  
2266 FEL  
**NAD 83**  
**LATITUDE**  
39.880299°  
**LONGITUDE**  
-108.358337°  
**NORTHING**  
1758151.9  
**EASTING**  
2197912.7

**BHL**  
1212 FNL  
1943 FWL  
**NAD 83**  
**LATITUDE**  
39.881785°  
**LONGITUDE**  
-108.361498°  
**NORTHING**  
1758720.9  
**EASTING**  
2197043.1

## - LEGEND -

FIELD LOCATED SECTION MONUMENTS AS DESCRIBED

FIELD SURVEYED WELL LOCATION

CALCULATED BOTTOM HOLE LOCATION

CALCULATED SECTION CORNER LOCATION

## SURVEYORS STATEMENT

I, MICHAEL J. LANGHORNE, A REGISTERED LAND SURVEYOR IN THE STATE OF COLORADO DO HEREBY CERTIFY THAT THE SURVEY SHOWN HEREON WAS PREPARED UNDER MY DIRECT SUPERVISION AND HAS BEEN STAKED ON THE GROUND AS SHOWN ON THE PLAT AND CHECKING THAT THIS MAP IS A TRUE REPRESENTATION THEREOF.

*Michael J. Langhorne*

MICHAEL J. LANGHORNE, COLORADO REGISTRATION NO. 36572  
FOR AND ON BEHALF OF  
BOOKCLIFF SURVEY SERVICES, INC.

## REFERENCES

- 1) CORRECTIVE DEPENDENT RESURVEY T. 2 S., R. 98 W., 6th P.M. (GLO PLAT)
- 2) U.S.G.S. QUAD: Rock School and Square S Ranch, CO

SURVEY DATE: 2/3/10  
MAP DATE: 3/31/10  
SCALE: 1" = 1000'  
PLAT: 1 of 1  
PROJECT: Williams High

136 East Third Street  
Rifle, Colorado 81650  
Ph. (970) 625-1330  
Fax (970) 625-2773



**BOOKCLIFF**  
Survey Services, Inc.

## NOTES

- 1) ELEVATIONS BASED ON N.A.V.D. 1988 PUBLISHED COORDINATES.
- 2) LATITUDES AND LONGITUDES ARE BASE ON NAD 83, PUBLISHED COORDINATES
- 3) STATE PLANE COORDINATES ARE BASED ON COLORADO CENTRAL ZONE, U.S. SURVEY FEET.
- 4) ELEVATION MASK SET TO 15"
- 5) GPS OPERATOR J. KIRKPATRICK, OBSERVED A PDOP OF 0.8 FOR SURVEY POINT NUMBER 121110.
- 6) SURFACE AND BOTTOM HOLE LOCATIONS ARE MEASURED 90° FROM SECTION LINES.

WELL LOCATION PLAT Prepared for:  
**Williams.** Williams Production, RMT  
SW1/4 NE1/4, SECTION 14  
T. 2 S., R. 98 W. of the 6th. P.M.  
GARFIELD COUNTY, COLORADO