

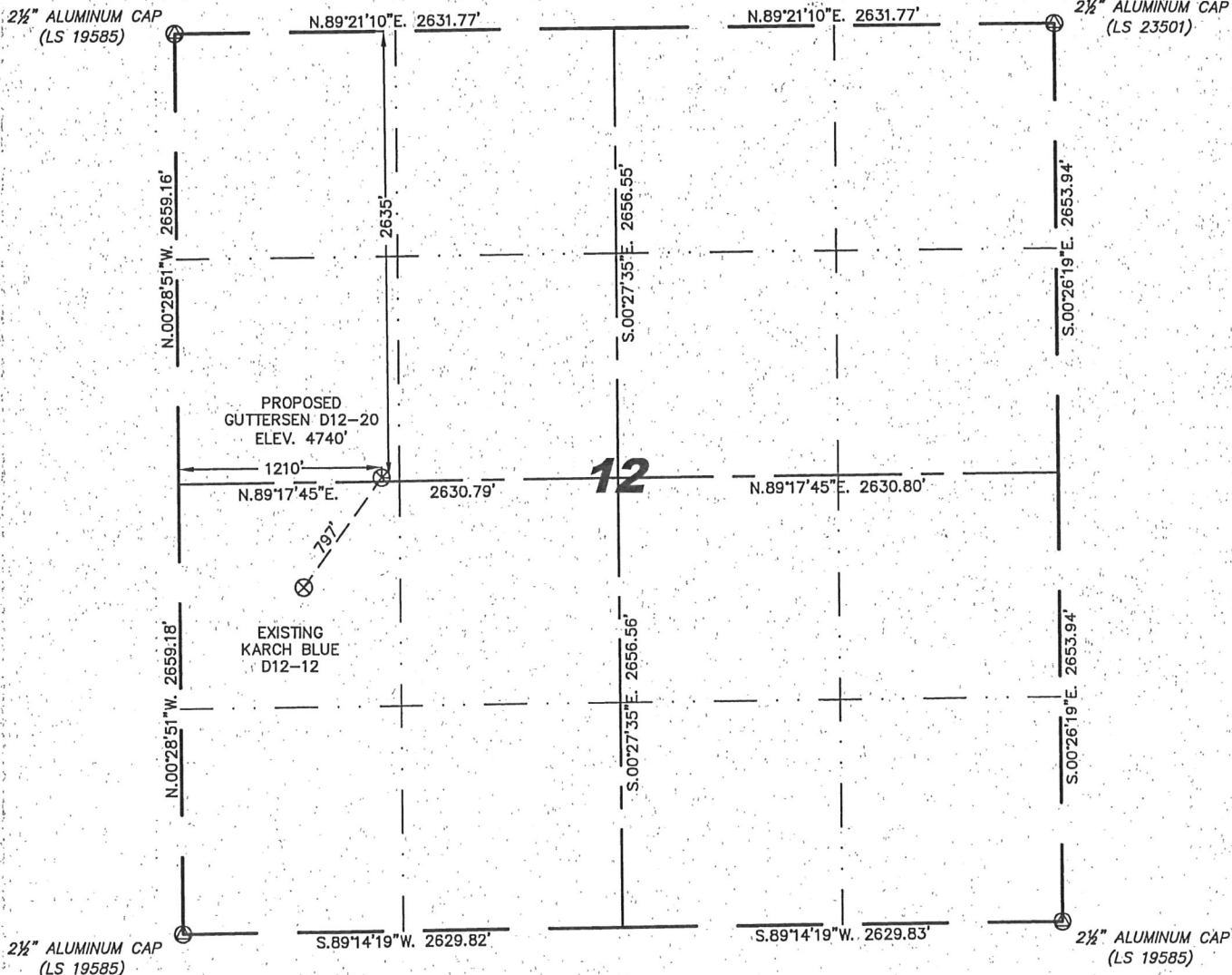
Stell Surveying Services, LLC

1102 West 19th Street P.O. BOX 2073

Cheyenne, Wyoming 82009

**WELL LOCATION CERTIFICATE**  
THIS MAP DOES NOT REPRESENT A BOUNDARY SURVEY

SECTION 12  
TOWNSHIP 3 NORTH  
RANGE 64 WEST



0 1000  
Scale: 1" = 1000'

IN ACCORDANCE WITH A REQUEST FROM JOE JOHNSON - NOBLE ENERGY INC., STELL SURVEYING SERVICES, LLC HAS DETERMINED THE LOCATION OF THE GUTTERSEN D12-20 WELL TO BE 2635' FNL, 1210' FWL, AS MEASURED AT NINETY (90) DEGREES FROM THE SECTION LINES, SECTION 12, TOWNSHIP 3 NORTH, RANGE 64 WEST, 6TH PRINCIPLE MERIDIAN, WELD COUNTY, COLORADO.

I HEREBY CERTIFY THAT THIS WELL LOCATION CERTIFICATE WAS PREPARED BY ME, OR UNDER MY DIRECT SUPERVISION, THAT THE FIELD WORK WAS COMPLETED ON 02/17/2010, FOR AND ON BEHALF OF NOBLE ENERGY INC., THAT IT IS NOT A LAND SURVEY PLAT OR AN IMPROVEMENT SURVEY PLAT, AND THAT IT IS NOT TO BE RELIED UPON FOR ESTABLISHMENT OF FENCE, BUILDING, OR OTHER FUTURE IMPROVEMENT LINES.

**NOTES:**

- 1) BASIS OF BEARINGS FOR THIS MAP ARE BASED UPON GPS OBSERVATIONS MADE ON 02/17/2010 BETWEEN MONUMENTS LOCATED AT THE SOUTHEAST SECTION CORNER AND THE NORTHEAST SECTION CORNER OF SAID SECTION AND WITH ALL BEARINGS SHOWN HEREON RELATIVE THERETO.
- 2) ELEVATIONS ARE BASED UPON NGS OPUS SOLUTION NAVD 88 DATUM.
- 3) THE NEAREST EXISTING WELL IS: KARCH BLUE D12-12, 797' SOUTHWEST.
- 4) SEE VISIBLE IMPROVEMENTS EXHIBIT FOR ALL IMPROVEMENTS WITHIN 400'.
- 5) THE LOCATION FALLS IN PASTURE LAND.

LATITUDE & LONGITUDE (NAD 83 SURFACE HOLE):

LATITUDE: N 40.23990°  
LONGITUDE: W 104.50464°  
PDOP: 2.0  
QUARTER-QUARTER: SW/4NW/4  
NEAREST PROPERTY LINE: 23' TO THE SOUTH

**LEGEND**

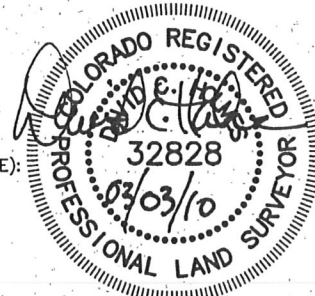
- (A) FOUND SURVEY MONUMENT PER MONUMENT RECORD - EXCEPTIONS NOTED.
- (C) CALCULATED DIMENSION

NOTICE: According to Colorado law you MUST commence any legal action based upon any defect in this W.L.C. within three years after you first discover such defect. In no event may any action based upon any defect in this W.L.C. be commenced more than ten years from this date of the certification shown hereon.

David C. Holmes  
Professional Land Surveyor Registration No. 32828  
State of Colorado

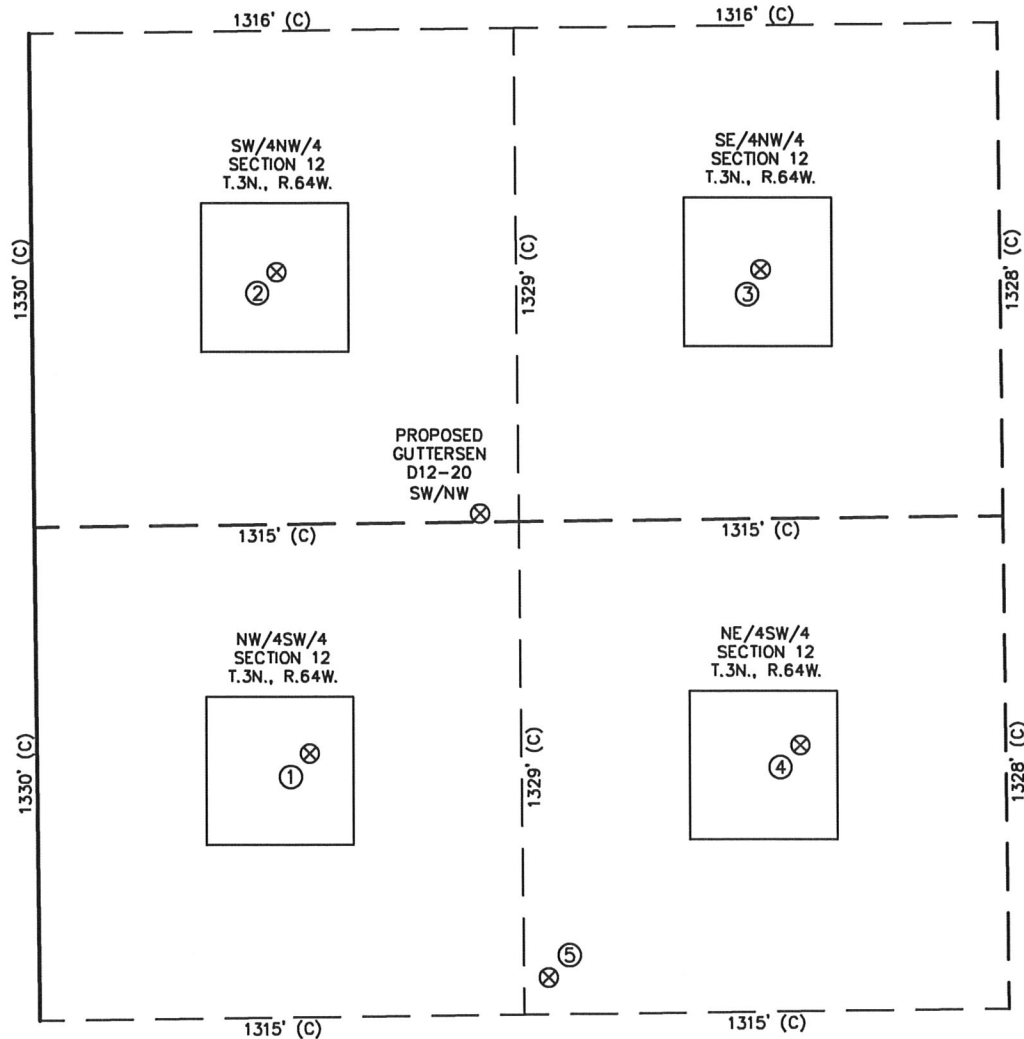
JOB #10086

Completed 02/24/2010

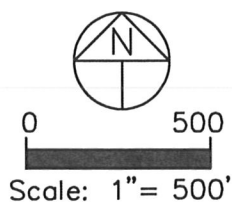


# SITE SKETCH – GUTTERSEN D12-20

SECTION 12  
TOWNSHIP 3 NORTH  
RANGE 64 WEST



①	②	③	④	⑤
KARCH BLUE D12-12 NW/SW SEC. 12 2040' FSL 740' FWL EL 4729' N 40.23814 W 104.50633 PDOP 2.3	SPIKE STATE D12-5 SW/NW SEC. 12 1979' FNL 664' FWL EL 4730' N 40.24170 W 104.50659 PDOP 2.1	SPIKE STATE D12-6 SE/NW SEC. 12 1986' FNL 1981' FWL EL 4740' N 40.24168 W 104.50187 PDOP 1.8	KARCH BLUE D12-11 NE/SW SEC. 12 2046' FSL 2073' FWL EL 4736' N 40.23816 W 104.50155 PDOP 2.3	GUTTERSEN D12-25 NE/SW SEC. 12 1428' FSL 1382' FWL EL 4747' N 40.23646 W 104.50403 PDOP 2.3



## NOTES:

- THIS SKETCH DOES NOT REPRESENT A BOUNDARY SURVEY.
- THE DATUM FOR THE LATITUDES AND LONGITUDES ON THIS SKETCH IS NAD83.