

T6S, R91W, 6th P.M.

BILL BARRETT CORP.

WELL LOCATION, FEDERAL 32B-20-691 (MDP PAD #13), LOCATED AS SHOWN IN THE SW 1/4 NE 1/4 OF SECTION 20, T6S, R91W, 6th P.M. GARFIELD COUNTY, COLORADO.



NOTES:

1. Well footages are measured at right angles to the Section Lines.
2. Bearings are based on Global Positioning Satellite observations.
3. The Bottom of hole bears N76°01'19"W 2061.70' from the East 1/4 Corner.
4. G.P.S. Operator: D. Slauch, (PDOP) = 1.8

IMPROVEMENT NOTE:

See addendum to legal plat (sheet 2i) for existing improvements within 400' of the proposed well head.

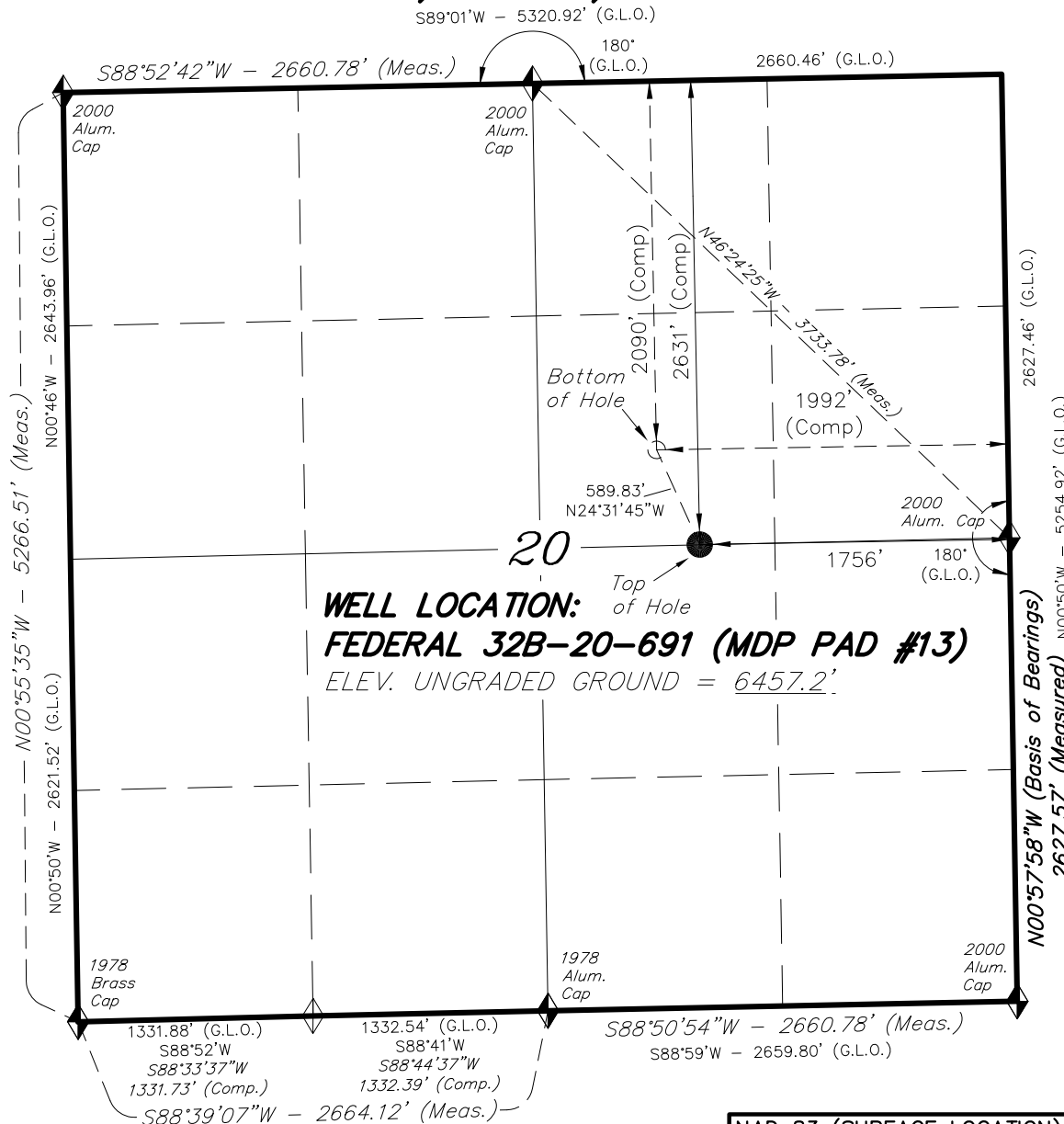
THIS IS TO CERTIFY THAT THE ABOVE PLAT WAS PREPARED FROM FIELD NOTES OF SURVEYS MADE BY ME OR UNDER MY SUPERVISION. THE LOCATION HAS BEEN STAKED ON THE GROUND AS SHOWN ON THE PLAT, AND THAT THE SAME ARE TRUE AND CORRECT TO THE BEST OF MY KNOWLEDGE AND BELIEF.

[Signature]
30125
REGISTERED LAND SURVEYOR
REGISTRATION No. 30125
STATE OF COLORADO

TRI STATE LAND SURVEYING & CONSULTING

180 NORTH VERNAL AVE. - VERNAL, UTAH 84078
(435) 781-2501

DATE SURVEYED: 01-05-10	SURVEYED BY: C.D.S.	SHEET 2f OF 12
DATE DRAWN: 01-11-10	DRAWN BY: L.C.S.	
REVISED:	SCALE: 1" = 1000'	



WELL LOCATION:
FEDERAL 32B-20-691 (MDP PAD #13)
ELEV. UNGRADED GROUND = 6457.2'

NAD 83 (SURFACE LOCATION)

LATITUDE = 39°30'47.95"
(39.513318)
LONGITUDE = 107°34'29.88"
(107.574967)

◆ = SECTION CORNERS LOCATED

Basis of elevation is the Rifle 2 Triangulation Station. 39°31'53.80" N Lat. & 107°47'07.78" W Long. (NAD 83). Elevation = 5323.1' (NAVD88).