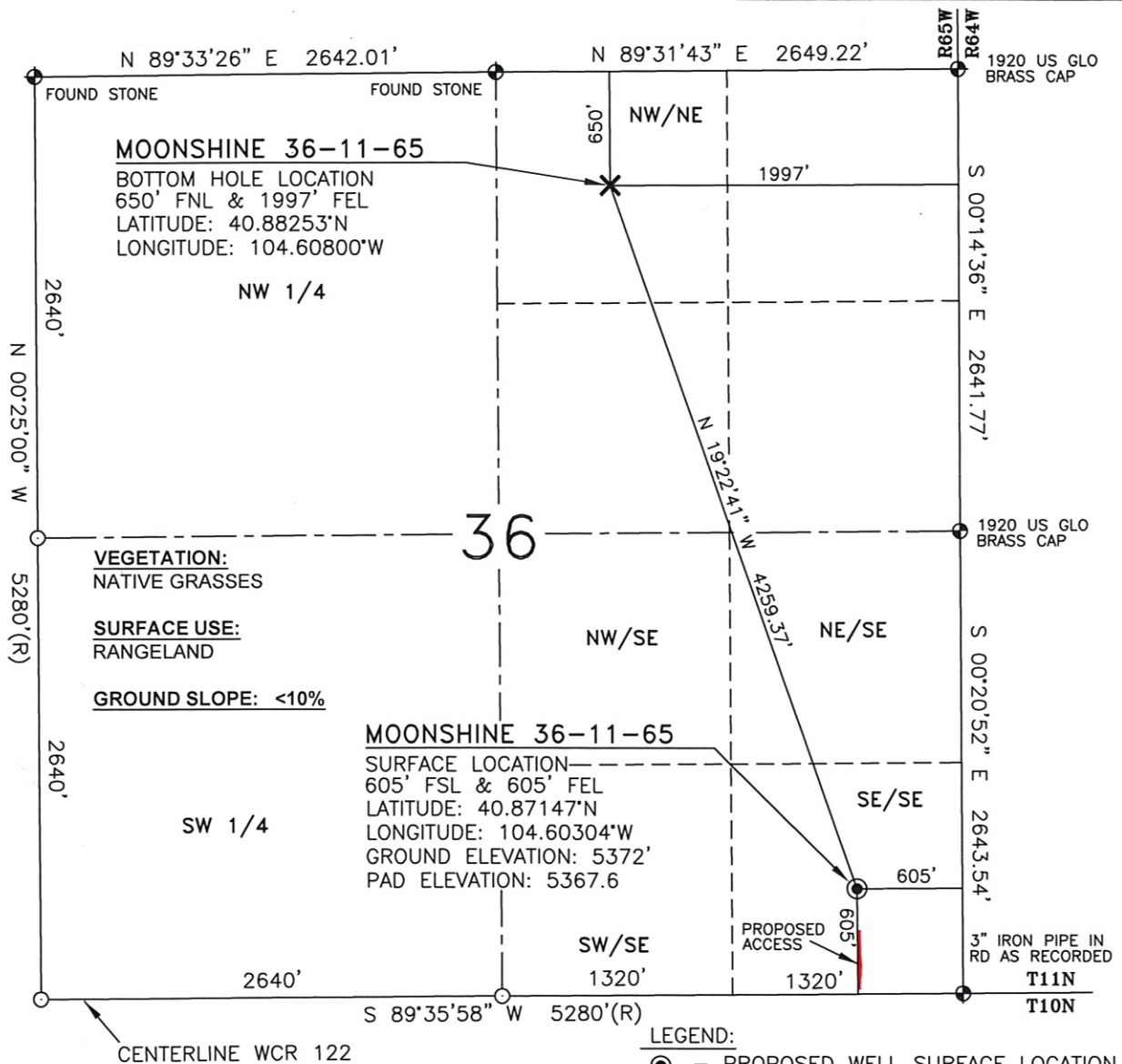


WELL LOCATION MAP

MOONSHINE 36-11-65



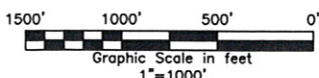
LEGEND:

- - PROPOSED WELL SURFACE LOCATION
- ✕ - PROPOSED BOTTOM HOLE LOCATION
- - FOUND AS NOTED
- - CALCULATED CORNER
- (R) - GLO RECORD

NOTES:

- 1) Horizontal and vertical coordinates based from NGS CORS station "COFC", with an elevation of 5285.90'.
 - 2) Basis of bearings are Colorado State Plane north zone. Distances are ground NAD 83, NAVD 88. PAF:1.000251
 - 3) All section line dimensions shown hereon are based on field measurements of existing monuments and/or physical evidence found in the field unless otherwise indicated. refer to land survey plats deposited in Weld County
 - 4) Physical features shown hereon are for graphical representation only.
 - 5) See form 2A for visible improvements within 400' of the wellhead
 - 6) Distances to nearest section lines are measured perpendicularly.
 - 7) This is not a land survey nor land survey plat.
 - 8) Date of survey 4/14/10; Date of Drawing 4/21/10. REV 0
- PDOP Reading 1.2 Instrument Operator Jason Levanen

I, JASON D. LEVANEN, A DULY REGISTERED LAND SURVEYOR IN THE STATE OF COLORADO, DO HEREBY CERTIFY THAT THIS PLAT WAS PREPARED FROM NOTES TAKEN DURING A SURVEY PERFORMED BY ME OR UNDER MY SUPERVISION ON APRIL 14, 2010.



WESTERN LAND SERVICES

Sheridan, WY 82801 (307)673-1817 Date: 4-21-10

DP: L:\S\Slawson\Well Plats\Well_Plats.dwg

Rev: 5-03-10

SLAWSON EXPLORATION
COMPANY, INC.
MOONSHINE 36-11-65

SL: SE1/4SE1/4, S.36, T11N-R65W
BL: NW1/4NE1/4, S.36, T11N-R65W
6TH P.M., WELD COUNTY, COLORADO