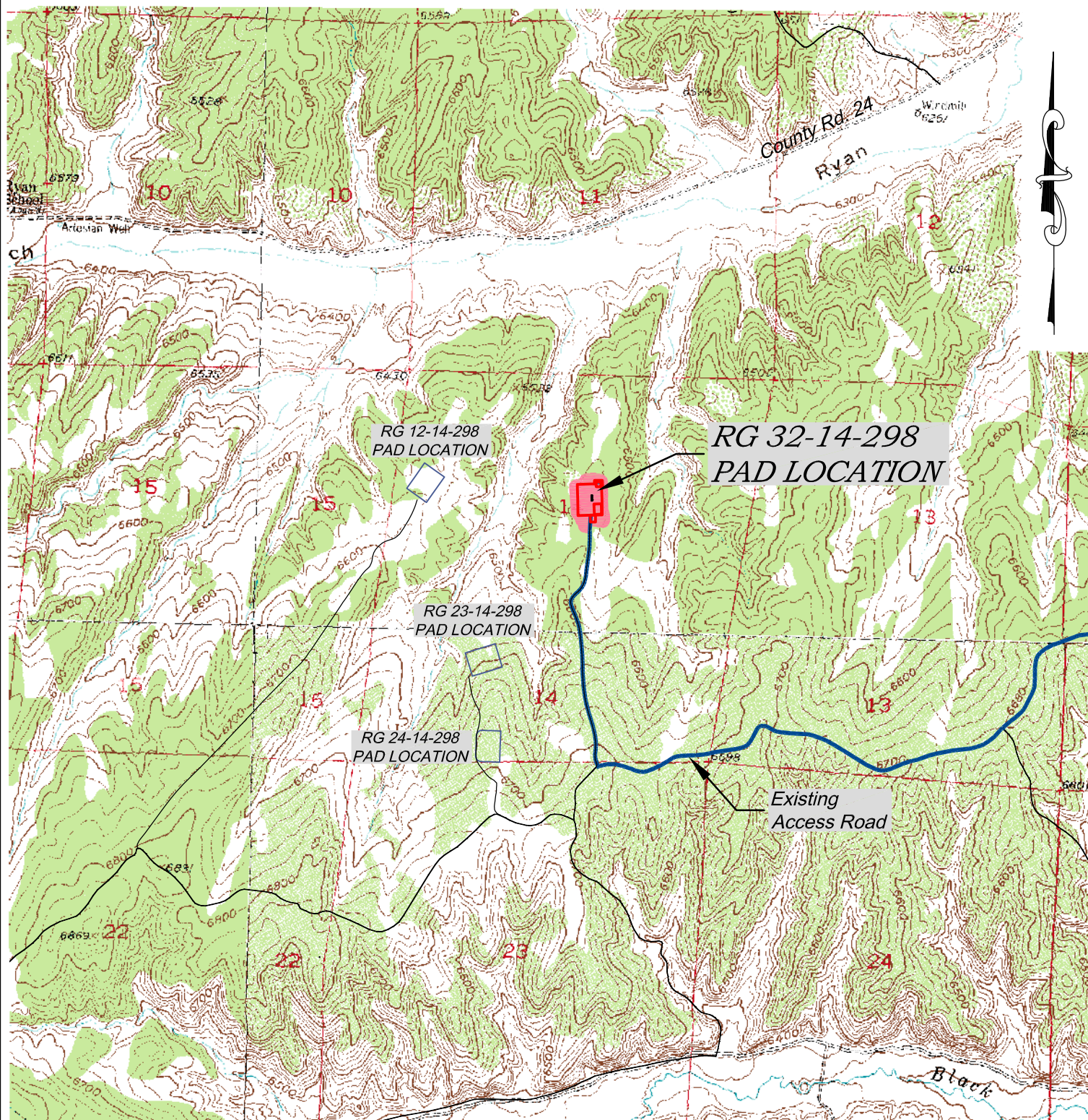


Section 14
T. 2 S., R 98 W
6th. P.M.

1000 0 2000
GRAPHIC SCALE IN FEET
1 INCH = 2000 FEET



ACCESS DESCRIPTION:

FROM THE INTERSECTION OF STATE HIGHWAY 13 AND RIO BLANCO COUNTY ROAD 6 PROCEED WESTERLY TO NORTHWESTERLY ALONG COUNTY ROAD 6 ± 27.0 MILES TO THE INTERSECTION WITH COUNTY ROAD 24, PROCEED WESTERLY ALONG COUNTY ROAD 24 ± 2.9 MILES TO THE INTERSECTION WITH A DIRT/GRAVEL ROAD, PROCEED LEFT IN A SOUTHERLY TO WESTERLY TO NORTHERLY DIRECTION ± 6.6 MILES TO THE EXISTING RG 12-14-298 DRILL PAD LOCATION, AS SHOWN HEREON.

RG 32-14-298

Construction Plan Prepared for:
Williams Williams Production, RMT

SCALE: 1" = 2000'
DATE: 5/10/10
Drawing: 4 of 8
PROJECT: Williams High
DFT: CWS

136 East Third Street
Rifle, Colorado 81650
Ph. (970) 625-1330
Fax (970) 625-2773

BOOKCLIFF
Survey Services, Inc.

RG 32-14-298 Drill Pad - Sheet 4
Access Road Map