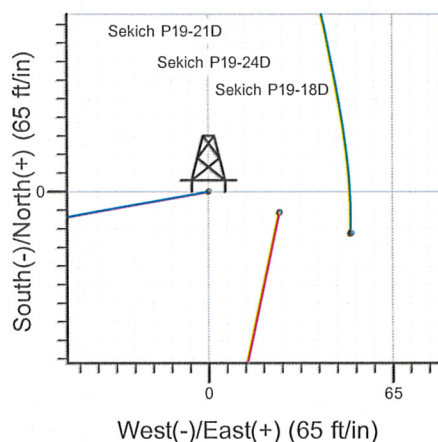
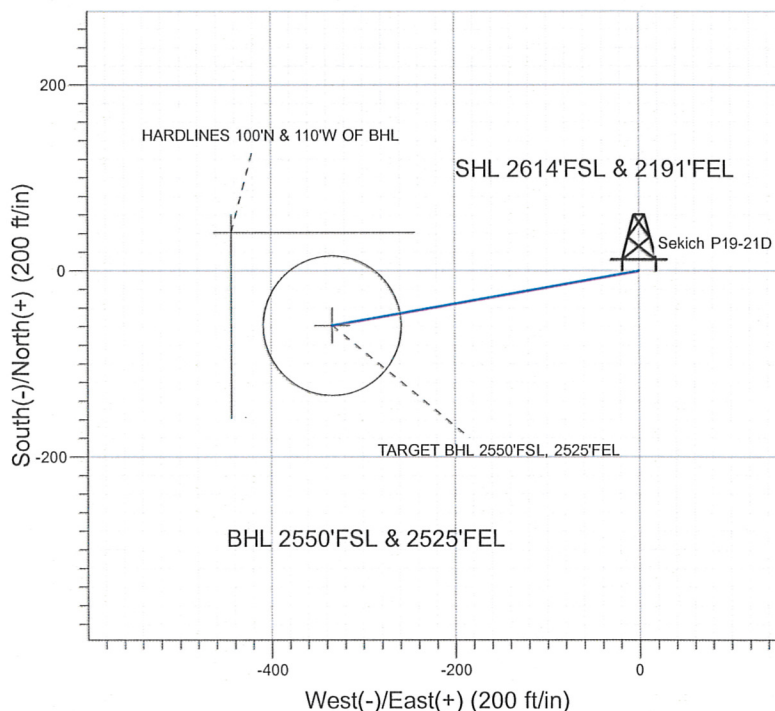
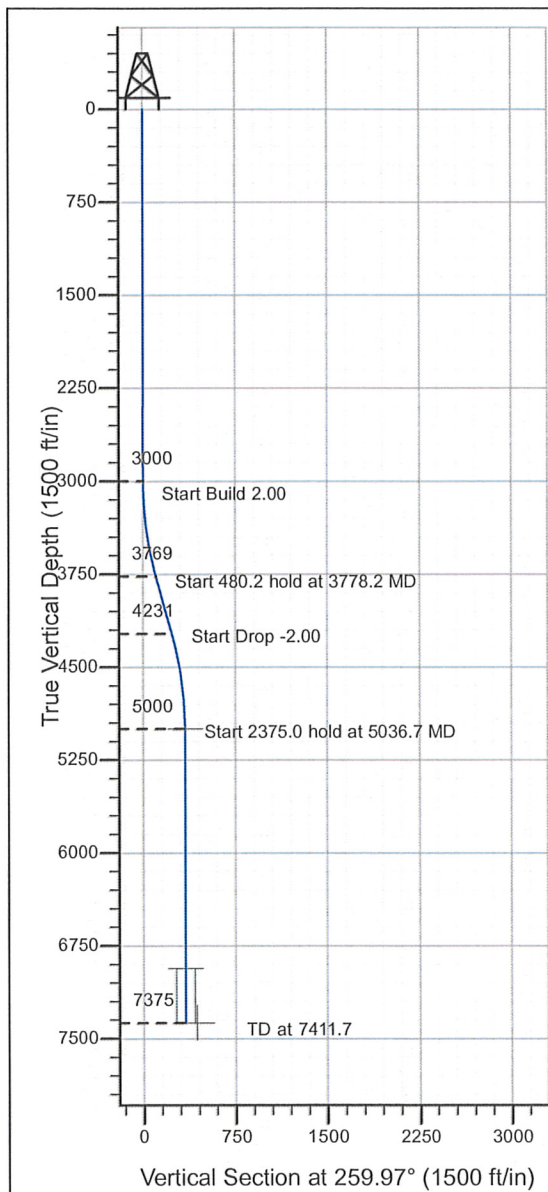


Well Name: Sekich P19-21D

Surface Location: Sekich P19-18D Pad Sec.19-T3N-R67W
 North American Datum 1983 , US State Plane 1983 , Colorado Northern Zone
 Ground Elevation: 4902.0
 +N/-S+E/-W Northing Easting Latitude Longitude Slot
 0.0 0.0 1320408.63 3158878.37 40° 12' 41.472 N 104° 55' 52.032 W
 Original Well Elev WELL @ 4915.0ft (Original Well Elev)

NOBLE ENERGY INC WELD COUNTY CO



Sekich P19-18D Pad Sec.19-T3N-R67W
 Sekich P19-21D
 Noble Sekich P19-21D Plan #1 (03-25-10)
 16:54, March 25 2010



Azimuths to True North
 Magnetic North: 9.09°
 Magnetic Field
 Strength: 53186.4snT
 Dip Angle: 66.93°
 Date: 12/31/2009
 Model: IGRF200510

WELLBORE TARGET DETAILS (LAT/LONG)

Name	TVD	+N/-S	+E/-W	Latitude	Longitude	Shape
TARGET BHL 2550'FSL, 2525'FEL	5000.0	-59.0	-333.8	40° 12' 40.888 N	104° 55' 56.334 W	Point
TARGET CIRCLE 2550'FSL, 2525'FEL	6935.0	-59.0	-333.8	40° 12' 40.889 N	104° 55' 56.335 W	Circle (Radius: 75.0)
HARDLINES 100'N & 110'W OF BHL	7375.0	41.0	-443.8	40° 12' 41.877 N	104° 55' 57.752 W	Polygon

SECTION DETAILS

Sec	MD	Inc	Azi	TVD	+N/-S	+E/-W	DLeg	TFace	VSec	Target
1	0.0	0.00	0.00	0.0	0.0	0.0	0.00	0.00	0.0	
2	3000.0	0.00	0.00	3000.0	0.0	0.0	0.00	0.00	0.0	
3	3778.2	15.56	259.97	3768.7	-18.3	-103.5	2.00	259.97	105.1	
4	4258.4	15.56	259.97	4231.3	-40.7	-230.3	0.00	0.00	233.9	
5	5036.7	0.00	0.00	5000.0	-59.0	-333.8	2.00	180.00	339.0	TARGET BHL 2550'FSL, 2525'FEL
6	7411.7	0.00	0.00	7375.0	-59.0	-333.8	0.00	0.00	339.0	



Directional

NOBLE ENERGY INC WELD COUNTY CO

SEC.19-T3N-R67W

Sekich P19-18D Pad Sec.19-T3N-R67W

Sekich P19-21D

Wellbore #1

Plan: Noble Sekich P19-21D Plan #1 (03-25-10)

Standard Planning Report

25 March, 2010



Database: EDM den0-adp01 Server Data
 Company: NOBLE ENERGY INC WELD COUNTY CO
 Project: SEC.19-T3N-R67W
 Site: Sekich P19-18D Pad Sec.19-T3N-R67W
 Well: Sekich P19-21D
 Wellbore: Wellbore #1
 Design: Noble Sekich P19-21D Plan #1 (03-25-10)

Local Co-ordinate Reference: Well Sekich P19-21D
 TVD Reference: WELL @ 4915.0ft (Original Well Elev)
 MD Reference: WELL @ 4915.0ft (Original Well Elev)
 North Reference: True
 Survey Calculation Method: Minimum Curvature

Project	SEC.19-T3N-R67W, Weld County, Colorado		
Map System:	US State Plane 1983	System Datum:	Mean Sea Level
Geo Datum:	North American Datum 1983		
Map Zone:	Colorado Northern Zone		Using geodetic scale factor

Site		Sekich P19-18D Pad Sec.19-T3N-R67W			
Site Position:		Northing:	1,320,394.39ft	Latitude:	40° 12' 41.328 N
From:	Lat/Long	Easting:	3,158,928.73ft	Longitude:	104° 55' 51.384 W
Position Uncertainty:	0.0 ft	Slot Radius:	"	Grid Convergence:	0.37 °

Well	Sekich P19-21D					
Well Position	+N/-S	14.6 ft	Northing:	1,320,408.63 ft	Latitude:	40° 12' 41.472 N
	+E/-W	-50.3 ft	Easting:	3,158,878.37 ft	Longitude:	104° 55' 52.032 W
Position Uncertainty		0.0 ft	Wellhead Elevation:	ft	Ground Level:	4,902.0 ft

Wellbore	Wellbore #1				
Magnetics	Model Name	Sample Date	Declination (°)	Dip Angle (°)	Field Strength (nT)
	IGRF200510	12/31/2009	9.10	66.93	53,186

Design	Noble Sekich P19-21D Plan #1 (03-25-10)			
Audit Notes:				
Version:	Phase:	PROTOTYPE	Tie On Depth:	0.0
Vertical Section:	Depth From (TVD) (ft)	+N/-S (ft)	+E/-W (ft)	Direction (°)
	0.0	0.0	0.0	259.97

Plan Sections										
Measured Depth (ft)	Inclination (°)	Azimuth (°)	Vertical Depth (ft)	+N/-S (ft)	+E/-W (ft)	Dogleg Rate (°/100ft)	Build Rate (°/100ft)	Turn Rate (°/100ft)	TFO (°)	Target
0.0	0.00	0.00	0.0	0.0	0.0	0.00	0.00	0.00	0.00	
3,000.0	0.00	0.00	3,000.0	0.0	0.0	0.00	0.00	0.00	0.00	
3,778.2	15.56	259.97	3,768.7	-18.3	-103.5	2.00	2.00	0.00	259.97	
4,258.4	15.56	259.97	4,231.3	-40.7	-230.3	0.00	0.00	0.00	0.00	
5,036.7	0.00	0.00	5,000.0	-59.0	-333.8	2.00	-2.00	0.00	180.00	TARGET BHL 255C
7,411.7	0.00	0.00	7,375.0	-59.0	-333.8	0.00	0.00	0.00	0.00	

Database: EDM den0-adp01 Server Data
Company: NOBLE ENERGY INC WELD COUNTY CO
Project: SEC.19-T3N-R67W
Site: Sekich P19-18D Pad Sec.19-T3N-R67W
Well: Sekich P19-21D
Wellbore: Wellbore #1
Design: Noble Sekich P19-21D Plan #1 (03-25-10)

Local Co-ordinate Reference: Well Sekich P19-21D
TVD Reference: WELL @ 4915.0ft (Original Well Elev)
MD Reference: WELL @ 4915.0ft (Original Well Elev)
North Reference: True
Survey Calculation Method: Minimum Curvature

Planned Survey

Measured Depth (ft)	Inclination (°)	Azimuth (°)	Vertical Depth (ft)	+N/-S (ft)	+E/-W (ft)	Vertical Section (ft)	Dogleg Rate (°/100ft)	Build Rate (°/100ft)	Turn Rate (°/100ft)
0.0	0.00	0.00	0.0	0.0	0.0	0.0	0.00	0.00	0.00
40.0	0.00	0.00	40.0	0.0	0.0	0.0	0.00	0.00	0.00
80.0	0.00	0.00	80.0	0.0	0.0	0.0	0.00	0.00	0.00
120.0	0.00	0.00	120.0	0.0	0.0	0.0	0.00	0.00	0.00
160.0	0.00	0.00	160.0	0.0	0.0	0.0	0.00	0.00	0.00
200.0	0.00	0.00	200.0	0.0	0.0	0.0	0.00	0.00	0.00
240.0	0.00	0.00	240.0	0.0	0.0	0.0	0.00	0.00	0.00
280.0	0.00	0.00	280.0	0.0	0.0	0.0	0.00	0.00	0.00
320.0	0.00	0.00	320.0	0.0	0.0	0.0	0.00	0.00	0.00
360.0	0.00	0.00	360.0	0.0	0.0	0.0	0.00	0.00	0.00
400.0	0.00	0.00	400.0	0.0	0.0	0.0	0.00	0.00	0.00
440.0	0.00	0.00	440.0	0.0	0.0	0.0	0.00	0.00	0.00
480.0	0.00	0.00	480.0	0.0	0.0	0.0	0.00	0.00	0.00
520.0	0.00	0.00	520.0	0.0	0.0	0.0	0.00	0.00	0.00
560.0	0.00	0.00	560.0	0.0	0.0	0.0	0.00	0.00	0.00
600.0	0.00	0.00	600.0	0.0	0.0	0.0	0.00	0.00	0.00
640.0	0.00	0.00	640.0	0.0	0.0	0.0	0.00	0.00	0.00
680.0	0.00	0.00	680.0	0.0	0.0	0.0	0.00	0.00	0.00
720.0	0.00	0.00	720.0	0.0	0.0	0.0	0.00	0.00	0.00
760.0	0.00	0.00	760.0	0.0	0.0	0.0	0.00	0.00	0.00
800.0	0.00	0.00	800.0	0.0	0.0	0.0	0.00	0.00	0.00
840.0	0.00	0.00	840.0	0.0	0.0	0.0	0.00	0.00	0.00
880.0	0.00	0.00	880.0	0.0	0.0	0.0	0.00	0.00	0.00
920.0	0.00	0.00	920.0	0.0	0.0	0.0	0.00	0.00	0.00
960.0	0.00	0.00	960.0	0.0	0.0	0.0	0.00	0.00	0.00
1,000.0	0.00	0.00	1,000.0	0.0	0.0	0.0	0.00	0.00	0.00
1,040.0	0.00	0.00	1,040.0	0.0	0.0	0.0	0.00	0.00	0.00
1,080.0	0.00	0.00	1,080.0	0.0	0.0	0.0	0.00	0.00	0.00
1,120.0	0.00	0.00	1,120.0	0.0	0.0	0.0	0.00	0.00	0.00
1,160.0	0.00	0.00	1,160.0	0.0	0.0	0.0	0.00	0.00	0.00
1,200.0	0.00	0.00	1,200.0	0.0	0.0	0.0	0.00	0.00	0.00
1,240.0	0.00	0.00	1,240.0	0.0	0.0	0.0	0.00	0.00	0.00
1,280.0	0.00	0.00	1,280.0	0.0	0.0	0.0	0.00	0.00	0.00
1,320.0	0.00	0.00	1,320.0	0.0	0.0	0.0	0.00	0.00	0.00
1,360.0	0.00	0.00	1,360.0	0.0	0.0	0.0	0.00	0.00	0.00
1,400.0	0.00	0.00	1,400.0	0.0	0.0	0.0	0.00	0.00	0.00
1,440.0	0.00	0.00	1,440.0	0.0	0.0	0.0	0.00	0.00	0.00
1,480.0	0.00	0.00	1,480.0	0.0	0.0	0.0	0.00	0.00	0.00
1,520.0	0.00	0.00	1,520.0	0.0	0.0	0.0	0.00	0.00	0.00
1,560.0	0.00	0.00	1,560.0	0.0	0.0	0.0	0.00	0.00	0.00
1,600.0	0.00	0.00	1,600.0	0.0	0.0	0.0	0.00	0.00	0.00
1,640.0	0.00	0.00	1,640.0	0.0	0.0	0.0	0.00	0.00	0.00
1,680.0	0.00	0.00	1,680.0	0.0	0.0	0.0	0.00	0.00	0.00
1,720.0	0.00	0.00	1,720.0	0.0	0.0	0.0	0.00	0.00	0.00
1,760.0	0.00	0.00	1,760.0	0.0	0.0	0.0	0.00	0.00	0.00
1,800.0	0.00	0.00	1,800.0	0.0	0.0	0.0	0.00	0.00	0.00
1,840.0	0.00	0.00	1,840.0	0.0	0.0	0.0	0.00	0.00	0.00
1,880.0	0.00	0.00	1,880.0	0.0	0.0	0.0	0.00	0.00	0.00
1,920.0	0.00	0.00	1,920.0	0.0	0.0	0.0	0.00	0.00	0.00
1,960.0	0.00	0.00	1,960.0	0.0	0.0	0.0	0.00	0.00	0.00
2,000.0	0.00	0.00	2,000.0	0.0	0.0	0.0	0.00	0.00	0.00
2,040.0	0.00	0.00	2,040.0	0.0	0.0	0.0	0.00	0.00	0.00
2,080.0	0.00	0.00	2,080.0	0.0	0.0	0.0	0.00	0.00	0.00
2,120.0	0.00	0.00	2,120.0	0.0	0.0	0.0	0.00	0.00	0.00

Database: EDM den0-adp01 Server Data
Company: NOBLE ENERGY INC WELD COUNTY CO
Project: SEC.19-T3N-R67W
Site: Sekich P19-18D Pad Sec.19-T3N-R67W
Well: Sekich P19-21D
Wellbore: Wellbore #1
Design: Noble Sekich P19-21D Plan #1 (03-25-10)

Local Co-ordinate Reference: Well Sekich P19-21D
TVD Reference: WELL @ 4915.0ft (Original Well Elev)
MD Reference: WELL @ 4915.0ft (Original Well Elev)
North Reference: True
Survey Calculation Method: Minimum Curvature

Planned Survey

Measured Depth (ft)	Inclination (°)	Azimuth (°)	Vertical Depth (ft)	+N/-S (ft)	+E/-W (ft)	Vertical Section (ft)	Dogleg Rate (°/100ft)	Build Rate (°/100ft)	Turn Rate (°/100ft)
2,160.0	0.00	0.00	2,160.0	0.0	0.0	0.0	0.00	0.00	0.00
2,200.0	0.00	0.00	2,200.0	0.0	0.0	0.0	0.00	0.00	0.00
2,240.0	0.00	0.00	2,240.0	0.0	0.0	0.0	0.00	0.00	0.00
2,280.0	0.00	0.00	2,280.0	0.0	0.0	0.0	0.00	0.00	0.00
2,320.0	0.00	0.00	2,320.0	0.0	0.0	0.0	0.00	0.00	0.00
2,360.0	0.00	0.00	2,360.0	0.0	0.0	0.0	0.00	0.00	0.00
2,400.0	0.00	0.00	2,400.0	0.0	0.0	0.0	0.00	0.00	0.00
2,440.0	0.00	0.00	2,440.0	0.0	0.0	0.0	0.00	0.00	0.00
2,480.0	0.00	0.00	2,480.0	0.0	0.0	0.0	0.00	0.00	0.00
2,520.0	0.00	0.00	2,520.0	0.0	0.0	0.0	0.00	0.00	0.00
2,560.0	0.00	0.00	2,560.0	0.0	0.0	0.0	0.00	0.00	0.00
2,600.0	0.00	0.00	2,600.0	0.0	0.0	0.0	0.00	0.00	0.00
2,640.0	0.00	0.00	2,640.0	0.0	0.0	0.0	0.00	0.00	0.00
2,680.0	0.00	0.00	2,680.0	0.0	0.0	0.0	0.00	0.00	0.00
2,720.0	0.00	0.00	2,720.0	0.0	0.0	0.0	0.00	0.00	0.00
2,760.0	0.00	0.00	2,760.0	0.0	0.0	0.0	0.00	0.00	0.00
2,800.0	0.00	0.00	2,800.0	0.0	0.0	0.0	0.00	0.00	0.00
2,840.0	0.00	0.00	2,840.0	0.0	0.0	0.0	0.00	0.00	0.00
2,880.0	0.00	0.00	2,880.0	0.0	0.0	0.0	0.00	0.00	0.00
2,920.0	0.00	0.00	2,920.0	0.0	0.0	0.0	0.00	0.00	0.00
2,960.0	0.00	0.00	2,960.0	0.0	0.0	0.0	0.00	0.00	0.00
3,000.0	0.00	0.00	3,000.0	0.0	0.0	0.0	0.00	0.00	0.00
3,040.0	0.80	259.97	3,040.0	0.0	-0.3	0.3	2.00	2.00	0.00
3,080.0	1.60	259.97	3,080.0	-0.2	-1.1	1.1	2.00	2.00	0.00
3,120.0	2.40	259.97	3,120.0	-0.4	-2.5	2.5	2.00	2.00	0.00
3,160.0	3.20	259.97	3,159.9	-0.8	-4.4	4.5	2.00	2.00	0.00
3,200.0	4.00	259.97	3,199.8	-1.2	-6.9	7.0	2.00	2.00	0.00
3,240.0	4.80	259.97	3,239.7	-1.7	-9.9	10.0	2.00	2.00	0.00
3,280.0	5.60	259.97	3,279.6	-2.4	-13.5	13.7	2.00	2.00	0.00
3,320.0	6.40	259.97	3,319.3	-3.1	-17.6	17.9	2.00	2.00	0.00
3,360.0	7.20	259.97	3,359.1	-3.9	-22.2	22.6	2.00	2.00	0.00
3,400.0	8.00	259.97	3,398.7	-4.9	-27.5	27.9	2.00	2.00	0.00
3,440.0	8.80	259.97	3,438.3	-5.9	-33.2	33.7	2.00	2.00	0.00
3,480.0	9.60	259.97	3,477.8	-7.0	-39.5	40.1	2.00	2.00	0.00
3,520.0	10.40	259.97	3,517.1	-8.2	-46.3	47.1	2.00	2.00	0.00
3,560.0	11.20	259.97	3,556.4	-9.5	-53.7	54.6	2.00	2.00	0.00
3,600.0	12.00	259.97	3,595.6	-10.9	-61.6	62.6	2.00	2.00	0.00
3,640.0	12.80	259.97	3,634.7	-12.4	-70.1	71.2	2.00	2.00	0.00
3,680.0	13.60	259.97	3,673.6	-14.0	-79.1	80.3	2.00	2.00	0.00
3,720.0	14.40	259.97	3,712.4	-15.7	-88.6	90.0	2.00	2.00	0.00
3,760.0	15.20	259.97	3,751.1	-17.5	-98.7	100.2	2.00	2.00	0.00
3,778.2	15.56	259.97	3,768.7	-18.3	-103.5	105.1	2.00	2.00	0.00
3,800.0	15.56	259.97	3,789.7	-19.3	-109.2	110.9	0.00	0.00	0.00
3,840.0	15.56	259.97	3,828.2	-21.2	-119.8	121.6	0.00	0.00	0.00
3,880.0	15.56	259.97	3,866.7	-23.1	-130.3	132.4	0.00	0.00	0.00
3,920.0	15.56	259.97	3,905.3	-24.9	-140.9	143.1	0.00	0.00	0.00
3,960.0	15.56	259.97	3,943.8	-26.8	-151.5	153.8	0.00	0.00	0.00
4,000.0	15.56	259.97	3,982.3	-28.7	-162.0	164.6	0.00	0.00	0.00
4,040.0	15.56	259.97	4,020.9	-30.5	-172.6	175.3	0.00	0.00	0.00
4,080.0	15.56	259.97	4,059.4	-32.4	-183.2	186.0	0.00	0.00	0.00
4,120.0	15.56	259.97	4,097.9	-34.3	-193.8	196.8	0.00	0.00	0.00
4,160.0	15.56	259.97	4,136.5	-36.1	-204.3	207.5	0.00	0.00	0.00
4,200.0	15.56	259.97	4,175.0	-38.0	-214.9	218.2	0.00	0.00	0.00
4,240.0	15.56	259.97	4,213.5	-39.9	-225.5	229.0	0.00	0.00	0.00

Database: EDM den0-adp01 Server Data
Company: NOBLE ENERGY INC WELD COUNTY CO
Project: SEC.19-T3N-R67W
Site: Sekich P19-18D Pad Sec.19-T3N-R67W
Well: Sekich P19-21D
Wellbore: Wellbore #1
Design: Noble Sekich P19-21D Plan #1 (03-25-10)

Local Co-ordinate Reference: Well Sekich P19-21D
TVD Reference: WELL @ 4915.0ft (Original Well Elev)
MD Reference: WELL @ 4915.0ft (Original Well Elev)
North Reference: True
Survey Calculation Method: Minimum Curvature

Planned Survey

Measured Depth (ft)	Inclination (°)	Azimuth (°)	Vertical Depth (ft)	+N/-S (ft)	+E/-W (ft)	Vertical Section (ft)	Dogleg Rate (°/100ft)	Build Rate (°/100ft)	Turn Rate (°/100ft)
4,258.4	15.56	259.97	4,231.3	-40.7	-230.3	233.9	0.00	0.00	0.00
4,280.0	15.13	259.97	4,252.1	-41.7	-236.0	239.6	2.00	-2.00	0.00
4,320.0	14.33	259.97	4,290.8	-43.5	-246.0	249.8	2.00	-2.00	0.00
4,360.0	13.53	259.97	4,329.6	-45.2	-255.5	259.4	2.00	-2.00	0.00
4,400.0	12.73	259.97	4,368.5	-46.8	-264.4	268.5	2.00	-2.00	0.00
4,440.0	11.93	259.97	4,407.6	-48.3	-272.8	277.1	2.00	-2.00	0.00
4,480.0	11.13	259.97	4,446.8	-49.6	-280.7	285.1	2.00	-2.00	0.00
4,520.0	10.33	259.97	4,486.1	-50.9	-288.0	292.5	2.00	-2.00	0.00
4,560.0	9.53	259.97	4,525.5	-52.1	-294.8	299.4	2.00	-2.00	0.00
4,600.0	8.73	259.97	4,565.0	-53.3	-301.1	305.8	2.00	-2.00	0.00
4,640.0	7.93	259.97	4,604.6	-54.3	-306.8	311.5	2.00	-2.00	0.00
4,680.0	7.13	259.97	4,644.2	-55.2	-312.0	316.8	2.00	-2.00	0.00
4,720.0	6.33	259.97	4,684.0	-56.0	-316.6	321.5	2.00	-2.00	0.00
4,760.0	5.53	259.97	4,723.7	-56.7	-320.6	325.6	2.00	-2.00	0.00
4,800.0	4.73	259.97	4,763.6	-57.3	-324.2	329.2	2.00	-2.00	0.00
4,840.0	3.93	259.97	4,803.5	-57.9	-327.1	332.2	2.00	-2.00	0.00
4,880.0	3.13	259.97	4,843.4	-58.3	-329.6	334.7	2.00	-2.00	0.00
4,920.0	2.33	259.97	4,883.3	-58.6	-331.4	336.6	2.00	-2.00	0.00
4,960.0	1.53	259.97	4,923.3	-58.9	-332.8	337.9	2.00	-2.00	0.00
5,000.0	0.73	259.97	4,963.3	-59.0	-333.6	338.7	2.00	-2.00	0.00
5,036.7	0.00	0.00	5,000.0	-59.0	-333.8	339.0	2.00	-2.00	0.00
TARGET BHL 2550'FSL, 2525'FEL									
5,040.0	0.00	0.00	5,003.3	-59.0	-333.8	339.0	0.00	0.00	0.00
5,080.0	0.00	0.00	5,043.3	-59.0	-333.8	339.0	0.00	0.00	0.00
5,120.0	0.00	0.00	5,083.3	-59.0	-333.8	339.0	0.00	0.00	0.00
5,160.0	0.00	0.00	5,123.3	-59.0	-333.8	339.0	0.00	0.00	0.00
5,200.0	0.00	0.00	5,163.3	-59.0	-333.8	339.0	0.00	0.00	0.00
5,240.0	0.00	0.00	5,203.3	-59.0	-333.8	339.0	0.00	0.00	0.00
5,280.0	0.00	0.00	5,243.3	-59.0	-333.8	339.0	0.00	0.00	0.00
5,320.0	0.00	0.00	5,283.3	-59.0	-333.8	339.0	0.00	0.00	0.00
5,360.0	0.00	0.00	5,323.3	-59.0	-333.8	339.0	0.00	0.00	0.00
5,400.0	0.00	0.00	5,363.3	-59.0	-333.8	339.0	0.00	0.00	0.00
5,440.0	0.00	0.00	5,403.3	-59.0	-333.8	339.0	0.00	0.00	0.00
5,480.0	0.00	0.00	5,443.3	-59.0	-333.8	339.0	0.00	0.00	0.00
5,520.0	0.00	0.00	5,483.3	-59.0	-333.8	339.0	0.00	0.00	0.00
5,560.0	0.00	0.00	5,523.3	-59.0	-333.8	339.0	0.00	0.00	0.00
5,600.0	0.00	0.00	5,563.3	-59.0	-333.8	339.0	0.00	0.00	0.00
5,640.0	0.00	0.00	5,603.3	-59.0	-333.8	339.0	0.00	0.00	0.00
5,680.0	0.00	0.00	5,643.3	-59.0	-333.8	339.0	0.00	0.00	0.00
5,720.0	0.00	0.00	5,683.3	-59.0	-333.8	339.0	0.00	0.00	0.00
5,760.0	0.00	0.00	5,723.3	-59.0	-333.8	339.0	0.00	0.00	0.00
5,800.0	0.00	0.00	5,763.3	-59.0	-333.8	339.0	0.00	0.00	0.00
5,840.0	0.00	0.00	5,803.3	-59.0	-333.8	339.0	0.00	0.00	0.00
5,880.0	0.00	0.00	5,843.3	-59.0	-333.8	339.0	0.00	0.00	0.00
5,920.0	0.00	0.00	5,883.3	-59.0	-333.8	339.0	0.00	0.00	0.00
5,960.0	0.00	0.00	5,923.3	-59.0	-333.8	339.0	0.00	0.00	0.00
6,000.0	0.00	0.00	5,963.3	-59.0	-333.8	339.0	0.00	0.00	0.00
6,040.0	0.00	0.00	6,003.3	-59.0	-333.8	339.0	0.00	0.00	0.00
6,080.0	0.00	0.00	6,043.3	-59.0	-333.8	339.0	0.00	0.00	0.00
6,120.0	0.00	0.00	6,083.3	-59.0	-333.8	339.0	0.00	0.00	0.00
6,160.0	0.00	0.00	6,123.3	-59.0	-333.8	339.0	0.00	0.00	0.00
6,200.0	0.00	0.00	6,163.3	-59.0	-333.8	339.0	0.00	0.00	0.00
6,240.0	0.00	0.00	6,203.3	-59.0	-333.8	339.0	0.00	0.00	0.00

Database: EDM den0-adp01 Server Data
Company: NOBLE ENERGY INC WELD COUNTY CO
Project: SEC.19-T3N-R67W
Site: Sekich P19-18D Pad Sec.19-T3N-R67W
Well: Sekich P19-21D
Wellbore: Wellbore #1
Design: Noble Sekich P19-21D Plan #1 (03-25-10)

Local Co-ordinate Reference: Well Sekich P19-21D
TVD Reference: WELL @ 4915.0ft (Original Well Elev)
MD Reference: WELL @ 4915.0ft (Original Well Elev)
North Reference: True
Survey Calculation Method: Minimum Curvature

Planned Survey

Measured Depth (ft)	Inclination (°)	Azimuth (°)	Vertical Depth (ft)	+N/-S (ft)	+E/-W (ft)	Vertical Section (ft)	Dogleg Rate (°/100ft)	Build Rate (°/100ft)	Turn Rate (°/100ft)
6,280.0	0.00	0.00	6,243.3	-59.0	-333.8	339.0	0.00	0.00	0.00
6,320.0	0.00	0.00	6,283.3	-59.0	-333.8	339.0	0.00	0.00	0.00
6,360.0	0.00	0.00	6,323.3	-59.0	-333.8	339.0	0.00	0.00	0.00
6,400.0	0.00	0.00	6,363.3	-59.0	-333.8	339.0	0.00	0.00	0.00
6,440.0	0.00	0.00	6,403.3	-59.0	-333.8	339.0	0.00	0.00	0.00
6,480.0	0.00	0.00	6,443.3	-59.0	-333.8	339.0	0.00	0.00	0.00
6,520.0	0.00	0.00	6,483.3	-59.0	-333.8	339.0	0.00	0.00	0.00
6,560.0	0.00	0.00	6,523.3	-59.0	-333.8	339.0	0.00	0.00	0.00
6,600.0	0.00	0.00	6,563.3	-59.0	-333.8	339.0	0.00	0.00	0.00
6,640.0	0.00	0.00	6,603.3	-59.0	-333.8	339.0	0.00	0.00	0.00
6,680.0	0.00	0.00	6,643.3	-59.0	-333.8	339.0	0.00	0.00	0.00
6,720.0	0.00	0.00	6,683.3	-59.0	-333.8	339.0	0.00	0.00	0.00
6,760.0	0.00	0.00	6,723.3	-59.0	-333.8	339.0	0.00	0.00	0.00
6,800.0	0.00	0.00	6,763.3	-59.0	-333.8	339.0	0.00	0.00	0.00
6,840.0	0.00	0.00	6,803.3	-59.0	-333.8	339.0	0.00	0.00	0.00
6,880.0	0.00	0.00	6,843.3	-59.0	-333.8	339.0	0.00	0.00	0.00
6,920.0	0.00	0.00	6,883.3	-59.0	-333.8	339.0	0.00	0.00	0.00
6,960.0	0.00	0.00	6,923.3	-59.0	-333.8	339.0	0.00	0.00	0.00
6,971.7	0.00	0.00	6,935.0	-59.0	-333.8	339.0	0.00	0.00	0.00
NIOBRARA - TARGET CIRCLE 2550'FSL, 2525'FEL									
7,000.0	0.00	0.00	6,963.3	-59.0	-333.8	339.0	0.00	0.00	0.00
7,040.0	0.00	0.00	7,003.3	-59.0	-333.8	339.0	0.00	0.00	0.00
7,080.0	0.00	0.00	7,043.3	-59.0	-333.8	339.0	0.00	0.00	0.00
7,120.0	0.00	0.00	7,083.3	-59.0	-333.8	339.0	0.00	0.00	0.00
7,160.0	0.00	0.00	7,123.3	-59.0	-333.8	339.0	0.00	0.00	0.00
7,200.0	0.00	0.00	7,163.3	-59.0	-333.8	339.0	0.00	0.00	0.00
7,240.0	0.00	0.00	7,203.3	-59.0	-333.8	339.0	0.00	0.00	0.00
7,261.7	0.00	0.00	7,225.0	-59.0	-333.8	339.0	0.00	0.00	0.00
CODELL									
7,280.0	0.00	0.00	7,243.3	-59.0	-333.8	339.0	0.00	0.00	0.00
7,320.0	0.00	0.00	7,283.3	-59.0	-333.8	339.0	0.00	0.00	0.00
7,360.0	0.00	0.00	7,323.3	-59.0	-333.8	339.0	0.00	0.00	0.00
7,400.0	0.00	0.00	7,363.3	-59.0	-333.8	339.0	0.00	0.00	0.00
7,411.7	0.00	0.00	7,375.0	-59.0	-333.8	339.0	0.00	0.00	0.00
HARDLINES 100'N & 110'W OF BHL									

Database: EDM den0-adp01 Server Data
Company: NOBLE ENERGY INC WELD COUNTY CO
Project: SEC.19-T3N-R67W
Site: Sekich P19-18D Pad Sec.19-T3N-R67W
Well: Sekich P19-21D
Wellbore: Wellbore #1
Design: Noble Sekich P19-21D Plan #1 (03-25-10)

Local Co-ordinate Reference: Well Sekich P19-21D
TVD Reference: WELL @ 4915.0ft (Original Well Elev)
MD Reference: WELL @ 4915.0ft (Original Well Elev)
North Reference: True
Survey Calculation Method: Minimum Curvature

Targets

Target Name - hit/miss target - Shape	Dip Angle (°)	Dip Dir. (°)	TVD (ft)	+N/-S (ft)	+E/-W (ft)	Northing (ft)	Easting (ft)	Latitude	Longitude
TARGET BHL 2550'F - plan hits target center - Point	0.00	0.00	5,000.0	-59.0	-333.8	1,320,347.46	3,158,544.98	40° 12' 40.888 N	104° 55' 56.334 W
HARDLINES 100'N & - plan misses target center by 148.7ft at 7411.7ft MD (7375.0 TVD, -59.0 N, -333.8 E) - Polygon	0.00	0.00	7,375.0	41.0	-443.8	1,320,446.78	3,158,434.33	40° 12' 41.877 N	104° 55' 57.752 W
Point 1			7,375.0	0.0	0.0	1,320,446.78	3,158,434.33		
Point 2			7,375.0	0.0	200.0	1,320,448.06	3,158,634.32		
Point 3			7,375.0	0.0	0.0	1,320,446.78	3,158,434.33		
Point 4			7,375.0	-200.0	0.0	1,320,246.79	3,158,435.62		
TARGET CIRCLE 25' - plan hits target center - Circle (radius 75.0)	0.00	0.00	6,935.0	-59.0	-333.8	1,320,347.49	3,158,544.97	40° 12' 40.889 N	104° 55' 56.335 W

Formations

Measured Depth (ft)	Vertical Depth (ft)	Name	Lithology	Dip (°)	Dip Direction (°)
6,971.7	6,935.0	NIOBRARA		0.00	
7,261.7	7,225.0	CODELL		0.00	