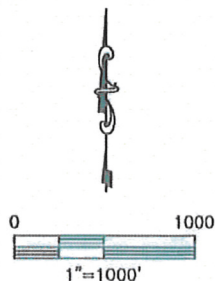
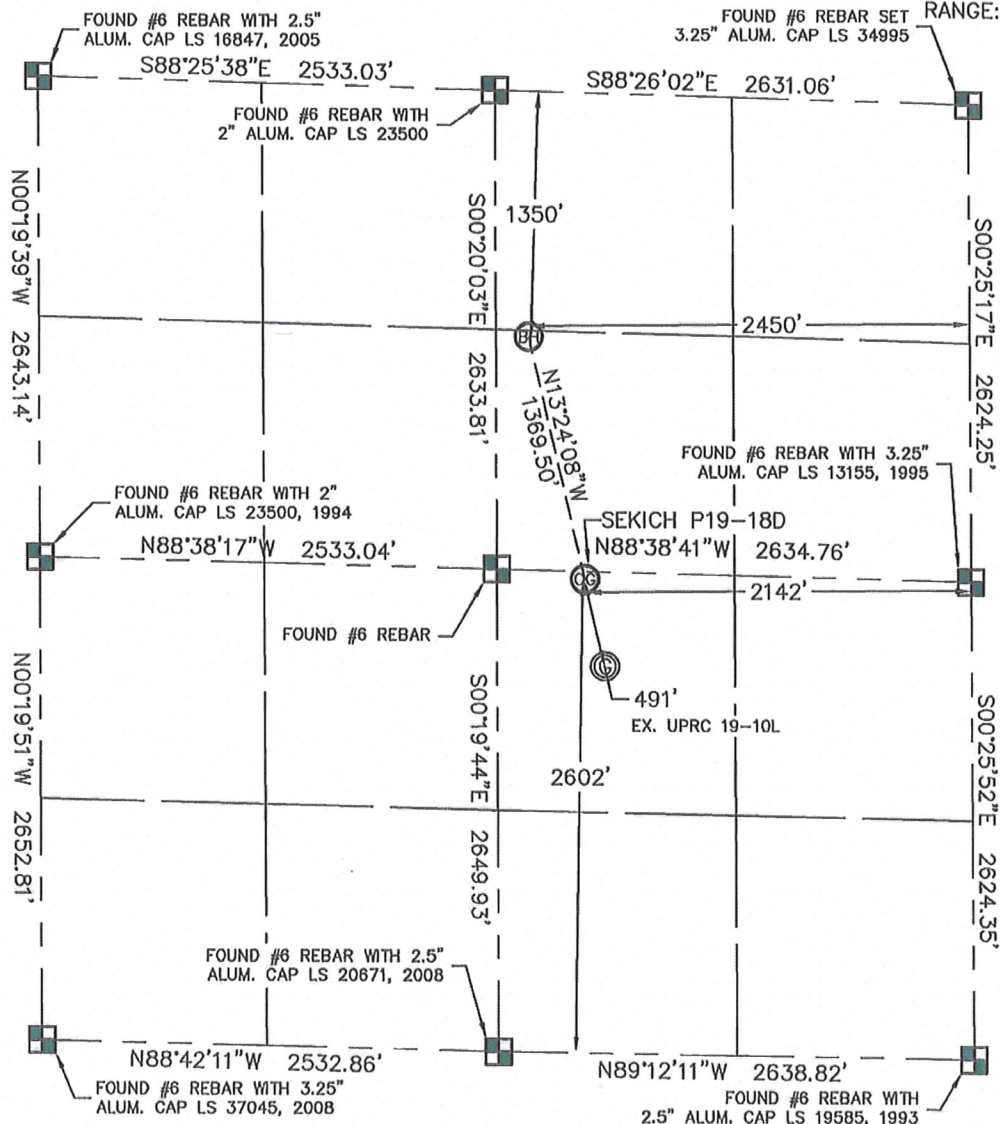


# WELL LOCATION CERTIFICATE

THIS MAP DOES NOT REPRESENT A BOUNDARY SURVEY

SECTION: 19  
TOWNSHIP: 3N  
RANGE: 67W



In accordance with a request from Matt Campbell with Noble Energy Inc. King Surveyors Inc. has determined the surface location of the SEKICH P19-18D to be 2602' from the SOUTH line and 2142' from the EAST line and the bottom hole to be 1350' from the NORTH line and 2450' from the EAST line as measured at right angles from the section line of Section 19, Township 3 North, Range 67 West of the Sixth Principal Meridian, County of Weld, State of Colorado.

I hereby state that this Well Location Certificate was prepared by me, or under my direct supervision, that the fieldwork was completed on 2-1-10, for and on behalf of Noble Energy Inc. That this is not a Land Survey Plat or an Improvement Survey Plat, and that it is not to be relied upon for establishment of fence, building, or other future improvement lines.

**NOTE:**



- 1) Bearings shown are Grid Bearings of the Colorado State Plane Coordinate System, North Zone, North American Datum 1983/2007. The lineal dimensions as contained herein are based upon the "U.S. Survey Foot."
- 2) Ground elevations are based on an observed GPS elevation (NAVD 1988 DATUM).
- 3) NEAREST EXISTING WELL: UPRC 19-10L 491'
- 4) IMPROVEMENTS: See VISIBLE IMPROVEMENTS exhibit for all visible improvements within 400' of well head.
- 5) SURFACE USE: PASTURE

<b>SURFACE LOCATION</b>	<b>BOTTOM HOLE</b>
LATITUDE: 40.21148°N	LATITUDE: 40.21514°N
LONGITUDE: 104.93094°W	LONGITUDE: 104.93205°W
PDOP: 1.1	
ELEV: 4902	
1/4, 1/4: NW1/4SE1/4	
NEAREST PROPERTY LINE: 117' SOUTH, 132' SOUTHEAST	

**NOTE**

According to Colorado law, you must commence any legal action based upon any defect in this W.L.C. within three years after you discover such defect. In no event, may any action based upon any defect in this survey be commenced more than ten years after the date of the certificate shown hereon. (13-80-105 C.R.S.)

## LEGEND

-  = ALIQUOT MONUMENT AS DESCRIBED
-  = CALCULATED POSITION

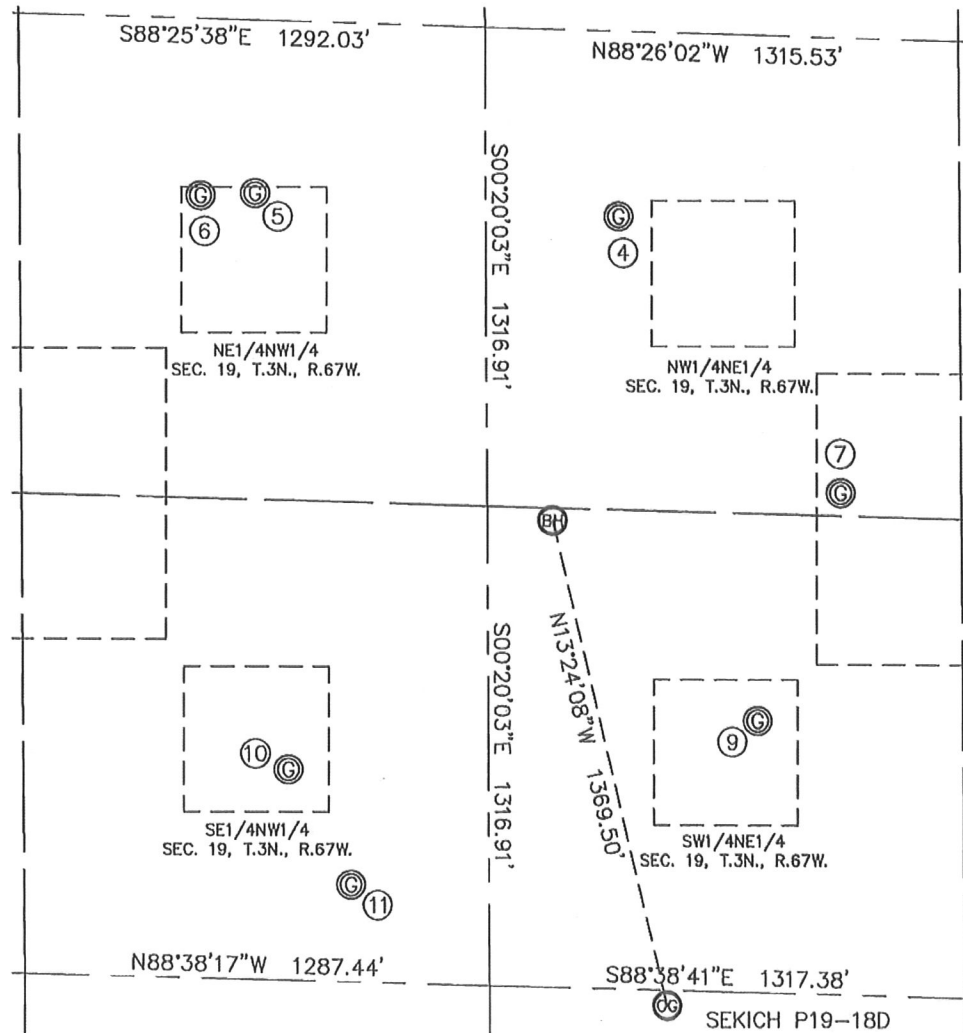


Steven A. Lund—On behalf of King Surveyors, Inc.  
Licensed Land Surveyor No. 34995  
State of Colorado

PROJECT#: 2010028

KING SURVEYORS, INC. 650 E. GARDEN DR. WINDSOR, CO 80550  
**SITE SKETCH**

SECTION: 19  
 TOWNSHIP: 3N  
 RANGE: 67W



④  
 SEKICH FARMS 19-2L  
 NW $\frac{1}{4}$  NE $\frac{1}{4}$   
 509' FNL  
 2262' FEL  
 LAT--40.21744°N  
 LONG--104.93138°W  
 PDOP: 3.2  
 ELEV: 4895

⑤  
 SEKICH 3-19  
 NE $\frac{1}{4}$  NW $\frac{1}{4}$   
 476' FNL  
 1890' FWL  
 LAT--40.21762°N  
 LONG--104.93499°W  
 PDOP: 2.0  
 ELEV: 4892

⑥  
 BUTCH 3-19  
 NE $\frac{1}{4}$  NW $\frac{1}{4}$   
 486' FNL  
 1741' FWL  
 LAT--40.21761°N  
 LONG--104.93553°W  
 PDOP: 3.9  
 ELEV: 4891

⑦  
 SEKICH NICK UNIT B #1  
 NW $\frac{1}{4}$  NE $\frac{1}{4}$   
 1251' FNL  
 1650' FEL  
 LAT--40.21534°N  
 LONG--104.92918°W  
 PDOP: 1.1  
 ELEV: 4898

⑨  
 SEKICH FARMS NO. 19-7L  
 SW $\frac{1}{4}$  NE $\frac{1}{4}$   
 1884' FNL  
 1885' FEL  
 LAT--40.21363°N  
 LONG--104.93002°W  
 PDOP: 1.5  
 ELEV: 4908

⑩  
 HSR SEKICH 6-19  
 SE $\frac{1}{4}$  NW $\frac{1}{4}$   
 2056' FNL  
 1975' FWL  
 LAT--40.21327°N  
 LONG--104.93469°W  
 PDOP: 1.1  
 ELEV: 4903

⑪  
 HSR GRANDVIEW ESTATES 11-19A  
 SE $\frac{1}{4}$  NW $\frac{1}{4}$   
 2367' FNL  
 2148' FWL  
 LAT--40.21240°N  
 LONG--104.93408°W  
 PDOP: 1.3  
 ELEV: 4902

