

WELL LOCATION CERTIFICATE

THIS MAP IS A GIS EXHIBIT AND DOES NOT REPRESENT A BOUNDARY SURVEY.

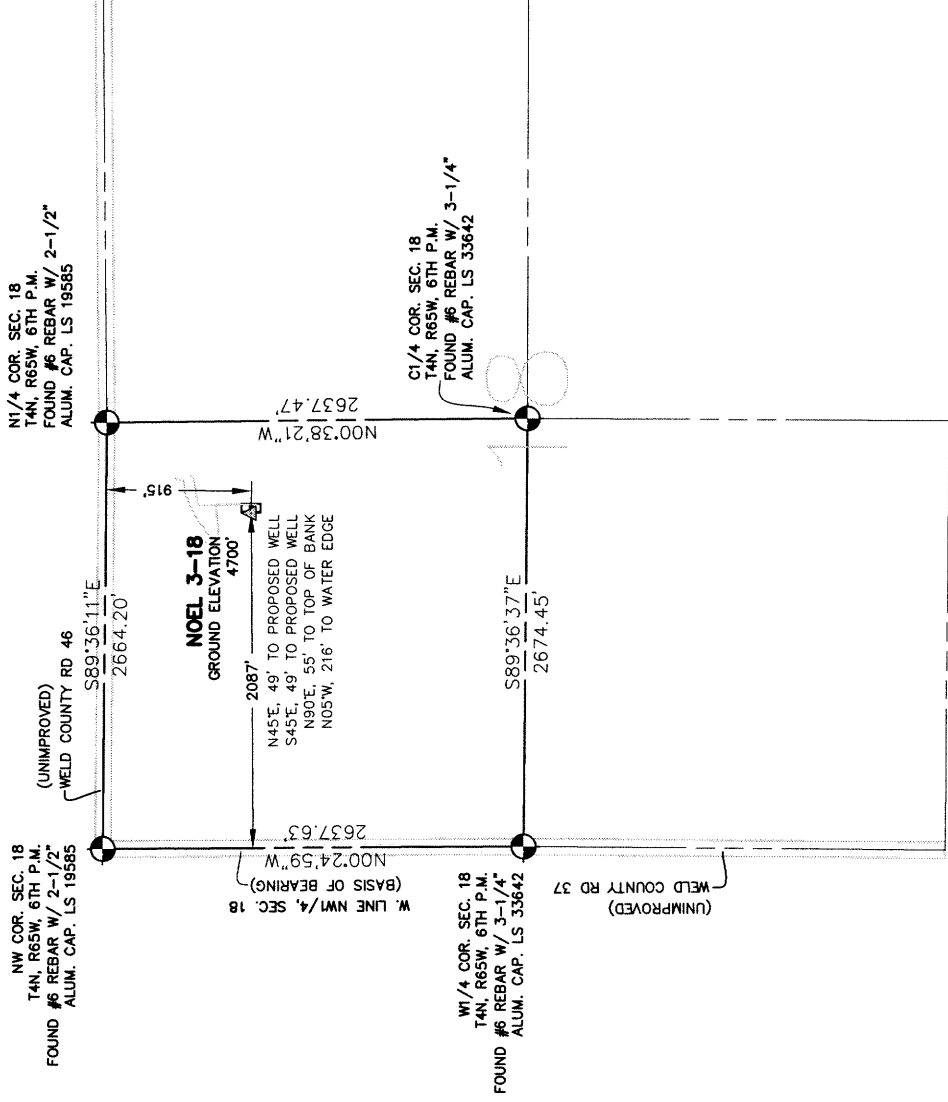
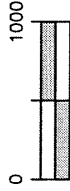


EXHIBIT MAP



WELL LOCATION CERTIFICATE

IN ACCORDANCE WITH A REQUEST FROM SHERRY GLASS OF KP KAUFFMAN INC., CIVIL ARTS INC. HAS DETERMINED THE LOCATION OF NOEL 3-18 WELL SITE TO BE 2087' FEL AND 915' FNL AS MEASURED AT NINETY (90) DEGREES FROM THE SECTION LINES OF SECTION 18, T4N, R65W, OF THE 6TH P.M., WELD COUNTY, CO.

LEGEND

- = FOUND SURVEY MONUMENT
- = ROAD
- (C) = CALCULATED DIMENSION
- △ = PROPOSED WELL LOCATION
- ◇ = BOTTOM OF HOLE LOCATION
- = OTHER PROPOSED WELL LOCATION
- = EXISTING WELL LOCATION

NOTES

- BEARINGS SHOWN ON THIS MAP ARE BASED UPON GPS OBSERVATIONS MADE ON 09/02/2009 BY KIPPER GOLDSBERRY BETWEEN THE NORTHWEST CORNER AND THE W1/4 CORNER OF SECTION 18, T4N, R65W, OF THE 6TH P.M., HAVING A BEARING OF N00°24'59"W, AS MONUMENTED AND SHOWN HEREON.
- ELEVATIONS ARE BASED UPON NAVD 88 DATUM.
- THE LOCATION FALLS IN AN AGRICULTURAL FIELD.

PROPOSED SURFACE HOLE DATA

(NAD 83)
LATITUDE: 40.31724 N
LONGITUDE: 104.70801 W
PDOP: <6

NOTICE

ACCORDING TO COLORADO LAW YOU MUST COMMENCE ANY LEGAL ACTION BASED UPON ANY DEFECT IN THIS SURVEY WITHIN THREE YEARS AFTER YOU FIRST DISCOVERED SUCH DEFECT. IN NO EVENT MAY ANY ACTION BASED UPON ANY DEFECT IN THIS SURVEY BE COMMENCED MORE THAN TEN YEARS FROM THE DATE OF THE CERTIFICATION SHOWN HEREON.

I HEREBY CERTIFY THAT THIS WELL LOCATION CERTIFICATE WAS PREPARED UNDER MY RESPONSIBLE CHARGE ON 10/05/2009 FOR AND ON BEHALF OF KP KAUFFMAN, INC. THAT IT IS NOT A LAND SURVEY PLAT OR AN IMPROVEMENT SURVEY PLAT, AND THAT IT IS NOT TO BE RELIED UPON FOR ESTABLISHMENT OF FENCE, BUILDING OR OTHER FUTURE IMPROVEMENT LINES.

PETER D. STEGER
COLORADO REGISTERED PROFESSIONAL
LAND SURVEYOR NO. 25379

DATE: 10/10/09



CIVILARTS

ENGINEERING
PLANNING
SURVEYING
1880 Leffland Circle, Suite A
Longmont, CO 80501
P 303.682.1131
F 303.682.1149

Z:\597-6\Ldd-597-6\DWG\597-6-SURVEY\NOEL 3-18\NOEL 3-18.DWG