

Steil Surveying Services, LLC

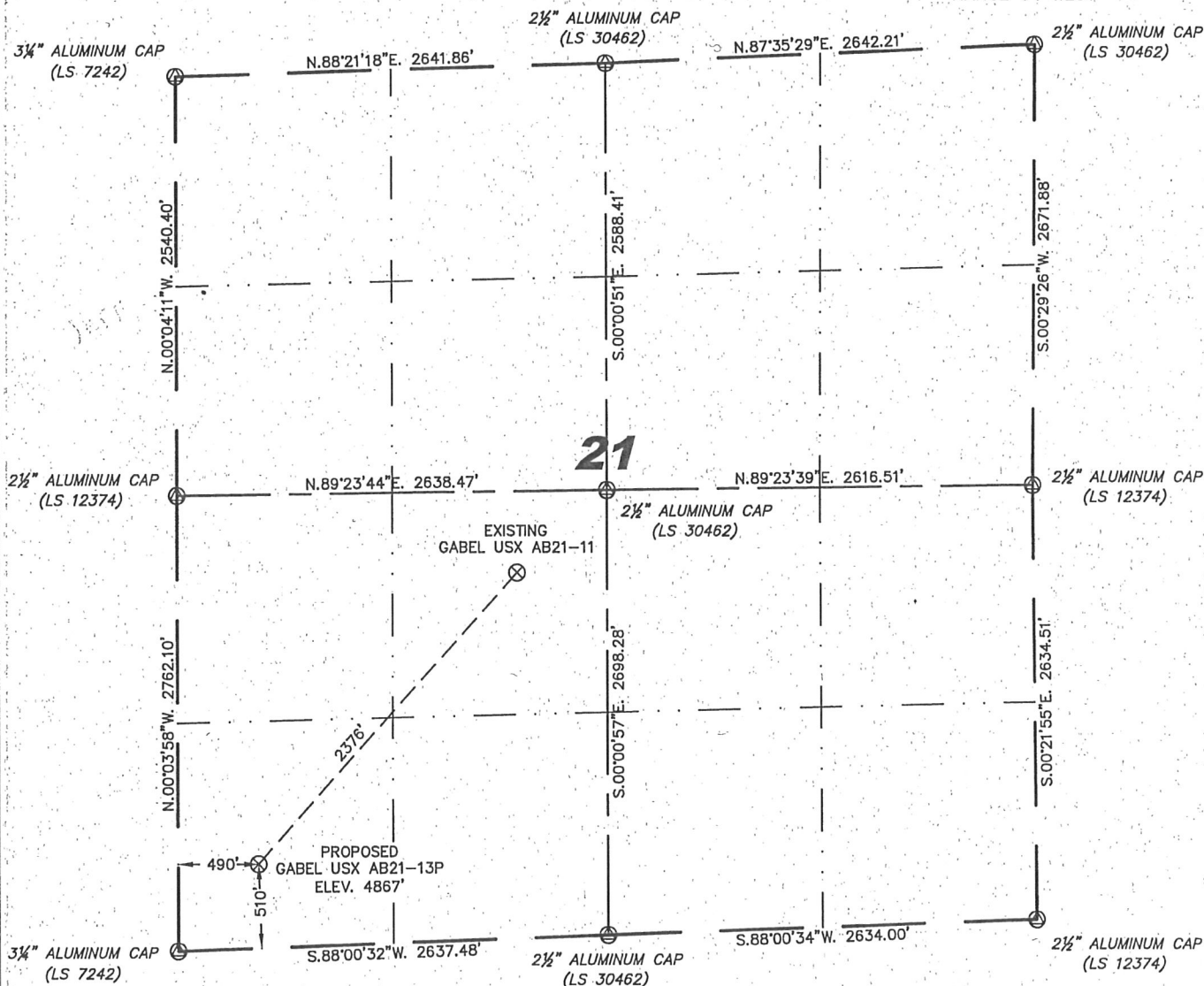
1102 West 19th Street P.O. BOX 2073

Cheyenne, Wyoming 82009

WELL LOCATION CERTIFICATE

THIS MAP DOES NOT REPRESENT A BOUNDARY SURVEY

SECTION 21
TOWNSHIP 7 NORTH
RANGE 64 WEST



0 1000

Scale: 1" = 1000'

IN ACCORDANCE WITH A REQUEST FROM ERIK VAN DECAR - NOBLE ENERGY INC, STEIL SURVEYING SERVICES, LLC HAS DETERMINED THE LOCATION OF THE GABEL USX AB21-13P WELL TO BE 510' FSL, 490' FWL, AS MEASURED AT NINETY (90) DEGREES FROM THE SECTION LINES, SECTION 21, TOWNSHIP 7 NORTH, RANGE 64 WEST, 6TH PRINCIPLE MERIDIAN, WELD COUNTY, COLORADO.

I HEREBY CERTIFY THAT THIS WELL LOCATION CERTIFICATE WAS PREPARED BY ME, OR UNDER MY DIRECT SUPERVISION, THAT THE FIELD WORK WAS COMPLETED ON 04/13/2010, FOR AND ON BEHALF OF NOBLE ENERGY INC, THAT IT IS NOT A LAND SURVEY PLAT OR AN IMPROVEMENT SURVEY PLAT, AND THAT IT IS NOT TO BE RELIED UPON FOR ESTABLISHMENT OF FENCE, BUILDING, OR OTHER FUTURE IMPROVEMENT LINES.

NOTES:

- 1) BASIS OF BEARINGS FOR THIS MAP ARE BASED UPON GPS OBSERVATIONS MADE ON 02/09/2010 BETWEEN MONUMENTS LOCATED AT THE SOUTHEAST SECTION CORNER AND THE NORTHEAST SECTION CORNER OF SAID SECTION AND WITH ALL BEARINGS SHOWN HEREON RELATIVE THERETO.
- 2) ELEVATIONS ARE BASED UPON NGS OPUS SOLUTION NAVD 88 DATUM.
- 3) THE NEAREST EXISTING WELL IS: GABEL USX AB21-11, 2376' NORTHEAST.
- 4) SEE VISIBLE IMPROVEMENTS EXHIBIT FOR ALL IMPROVEMENTS WITHIN 400'.
- 5) THE LOCATION FALLS IN PASTURE LAND.

LATITUDE & LONGITUDE (NAD 83 SURFACE HOLE):

LATITUDE: N 40.55251°
LONGITUDE: W 104.56234°

PDOP: 3.3

QUARTER-QUARTER: SW/4SW/4

NEAREST PROPERTY LINE: 490' TO THE WEST

LEGEND

(A) FOUND SURVEY MONUMENT PER MONUMENT RECORD - EXCEPTIONS NOTED.

(C) CALCULATED DIMENSION



Completed 04/23/2010

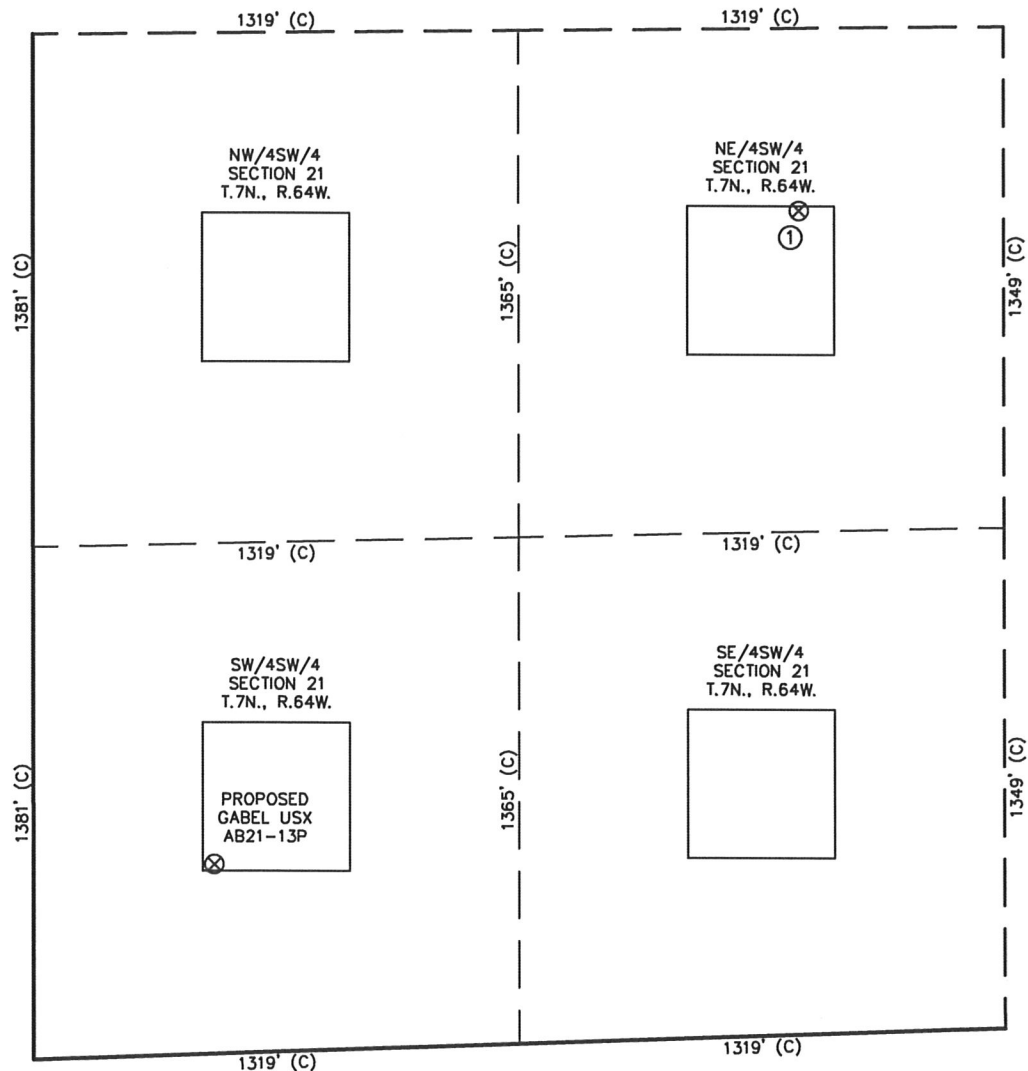
David C. Holmes
Professional Land Surveyor Registration No. 32828
State of Colorado

JOB #: 10086

NOTICE: According to Colorado law you MUST commence any legal action based upon any defect in this W.L.C. within three years after you first discover such defect. In no event may any action based upon any defect in this W.L.C. be commenced more than ten years from this sold date of the certification shown hereon.

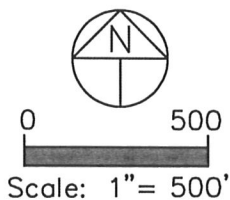
SITE SKETCH – GABEL USX AB21-13P

SECTION 21
TOWNSHIP 7 NORTH
RANGE 64 WEST



①

GABEL USX
AB21-11
NE/SW SEC. 21
2219' FSL
2083' FWL
EL 4907'
N 40.55251
W 104.56234
PDOP 2.1



NOTES:

- 1) THIS SKETCH DOES NOT REPRESENT A BOUNDARY SURVEY.
- 2) THE DATUM FOR THE LATITUDES AND LONGITUDES ON THIS SKETCH IS NAD83.