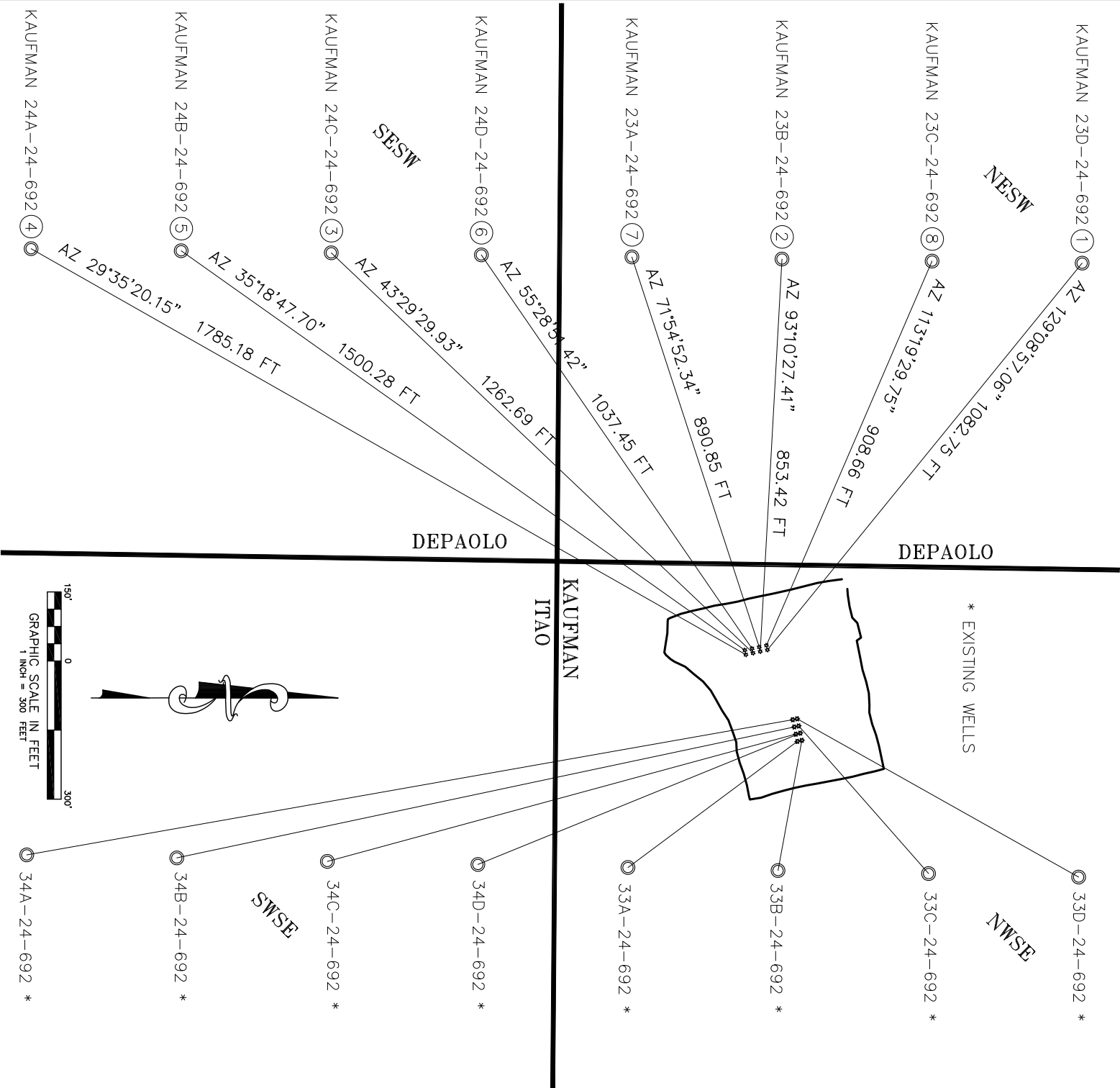


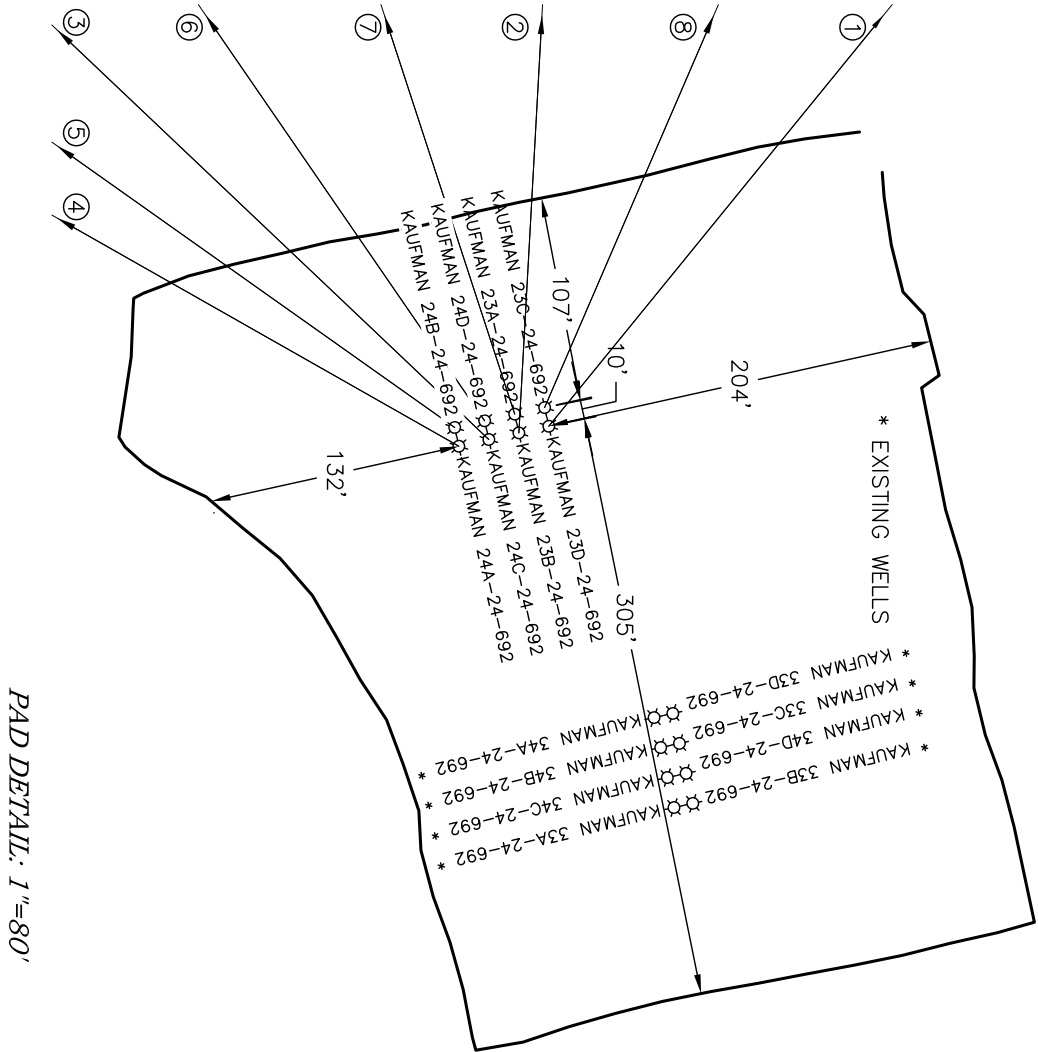
SURFACE HOLE LOCATIONS							BOTTOM HOLE LOCATIONS							
	WELL NAME	FSL	FEL	NORTHING	EASTING	LATITUDE	LONGITUDE		FSL	FWL	NORTHING	EASTING	LATITUDE	LONGITUDE
1	KAUFMAN 23D-24-692	1770	2448	1617738.1	2403363.9	39.510403	-107.614852	2447	1970	1618421.7	2402524.2	39.512226	-107.617883	
2	KAUFMAN 23B-24-692	1755	2444	1617722.5	2403367.4	39.510361	-107.614838	1795	1970	1617769.7	2402515.3	39.510436	-107.617861	
3	KAUFMAN 24C-24-692	1739	2440	1617706.9	2403370.8	39.510318	-107.614824	816	1970	1616790.8	2402501.8	39.507748	-107.617828	
4	KAUFMAN 24A-24-692	1723	2436	1617691.2	2403374.3	39.510275	-107.614811	164	1970	1616138.9	2402492.8	39.505958	-107.617806	
5	KAUFMAN 24B-24-692	1721	2446	1617689.1	2403364.5	39.510269	-107.614845	490	1970	1616464.8	2402497.3	39.506853	-107.617817	
6	KAUFMAN 24D-24-692	1737	2450	1617704.7	2403361.1	39.510311	-107.614859	1142	1970	1617116.8	2402506.3	39.508643	-107.617839	
7	KAUFMAN 23A-24-692	1752	2454	1617720.3	2403357.6	39.510354	-107.614872	1469	1970	1617443.8	2402510.8	39.509541	-107.617850	
8	KAUFMAN 23C-24-692	1768	2457	1617735.9	2403354.1	39.510397	-107.614886	2121	1970	618095.7	2402519.7	39.511331	-107.617872	




# WELL PAD INTERFERENCE EXHIBIT

## KAUFMAN PAD # 7 PHASE II

NAD 83 COLORADO CENTRAL ZONE



\*NOTE: THE FINISHED PAD ELEVATION IS 5843.5'



ECLIPSE

surveying

111 E. THIRD ST., SUITE 208 RIFLE, CO 81650

(970) 625-3048


SURVEY DATE: 01/29/10

RELEASE DATE: 02/19/10

SCALE: 1" = 300'

SHEET: 1 of 1

PROJECT #: KAUF7



Bill Barrett Corporation

NW1/4SE1/4, SECTION 24

T. 6 S., R. 92 W. of the 6th. P.M.

GARFIELD COUNTY, COLORADO