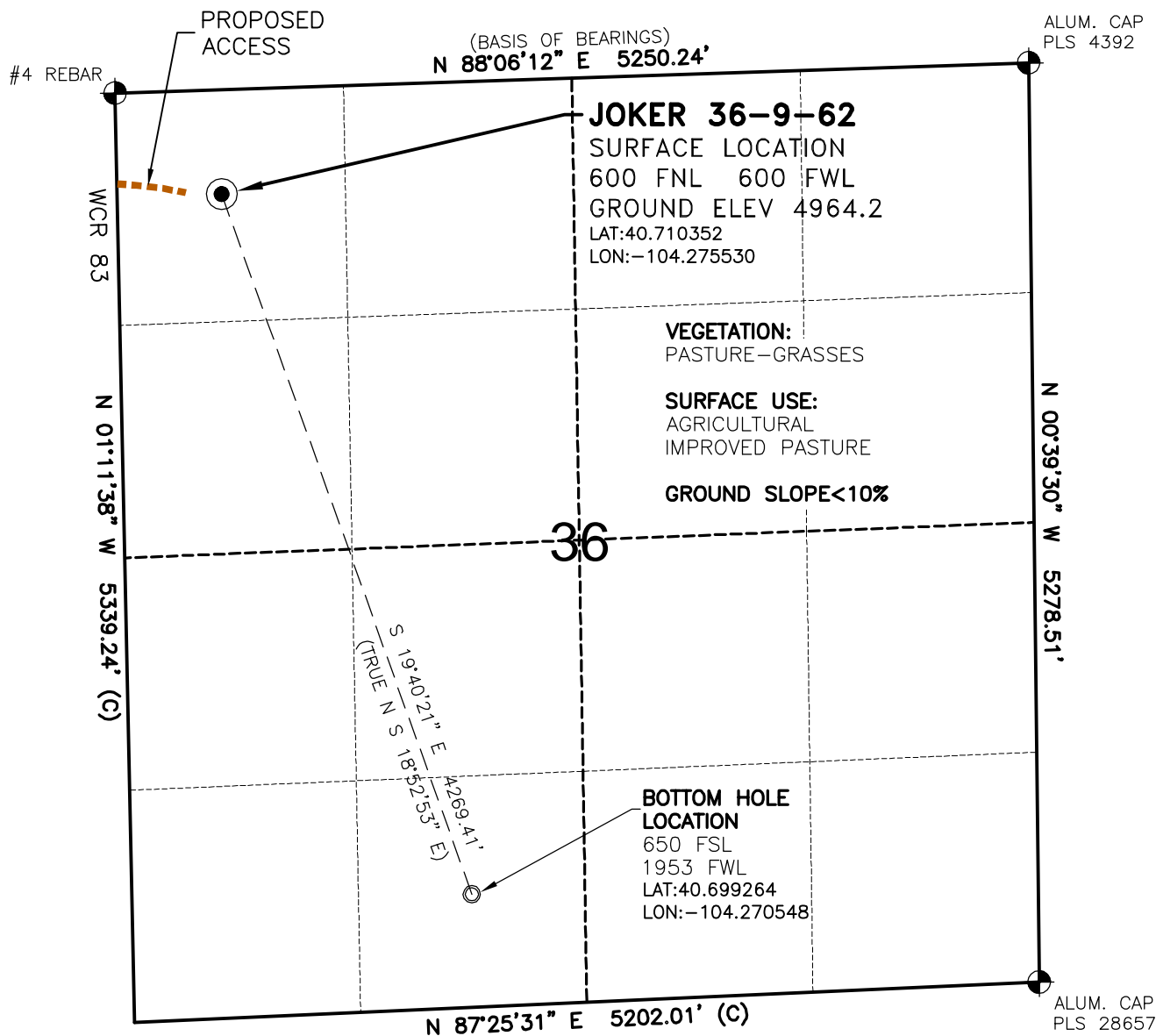


# WELL LOCATION MAP

JOKER 36-9-62 PAD



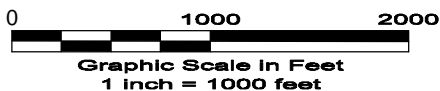
## SURVEYOR'S STATEMENT

The undersigned hereby states that the well location shown hereon was staked on the ground based on existing monumentation and/or physical evidence found in the field and is correct to the best of my knowledge, information and belief.

## NOTES

- 1.) Horizontal coordinates based on NGS control point "PORTER" and vertical datum based on NGS control point "A 310" with an elevation of 5253.35. NAVD 1988.
  - 2.) All directions, distances, and dimensions shown hereon are based on coordinates from the "Colorado coordinate system of 1983 north zone" (article 52 of title 38, C.R.S.).
  - 3.) All section line dimensions shown hereon are based on field measurements of existing monuments and/or physical evidence found in the field unless otherwise indicated. Refer to land survey plats deposited in Weld County.
  - 4.) Physical features shown hereon are for graphical representation only.
  - 5.) See Form 2A for visible improvements within 400' of wellhead.
  - 6.) Distances to nearest section lines are measured perpendicularly.
  - 7.) This is not a land survey nor land survey plat.
  - 8.) Date of Survey 4/15/10; Date of Drawing 4/21/10. REV 0
- PDOP Reading: 2.1 Instrument Operator: DJM

4/22/10



**GEO SURV**

LAND SURVEYING AND MAPPING  
 LAFAYETTE - WINTER PARK  
 Ph 303 666 0379 Fx 303 665 6320

**SLAWSON EXPLORATION CO., INC.**  
 JOKER 36-9-62

SL NW1/4 NW1/4 SEC. 36 T9N R62W  
 BL SE1/4 SW1/4 SEC. 36 T9N R62W  
 6th PM WELD COUNTY COLORADO