

Steil Surveying Services, LLC

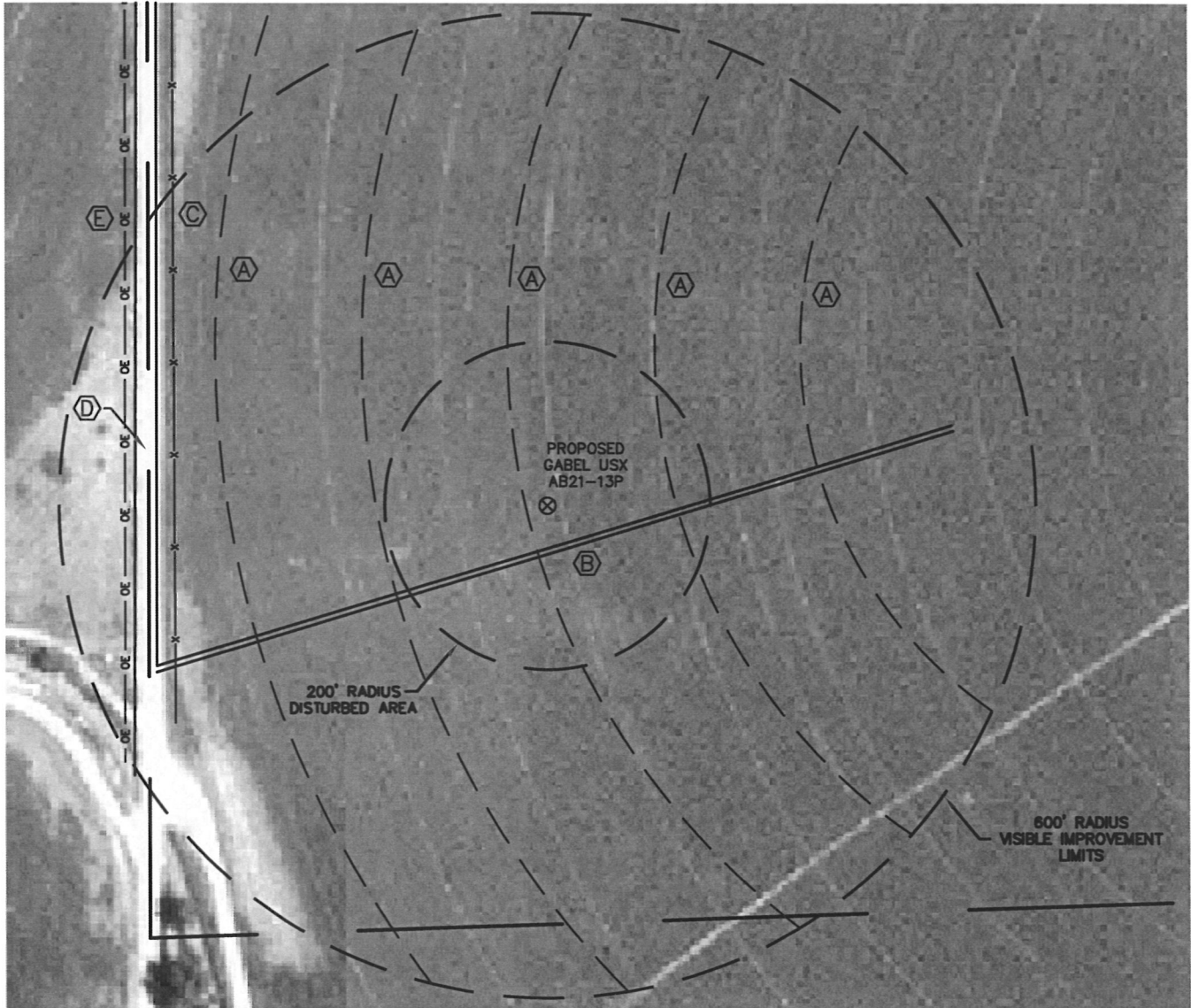
1102 West 19th Street P.O. BOX 2073

Cheyenne, Wyoming 82009

### VISIBLE IMPROVEMENTS

THIS MAP DOES NOT REPRESENT A BOUNDARY SURVEY

SECTION 21  
TOWNSHIP 7 NORTH  
RANGE 64 WEST



#### IMPROVEMENTS:

- (A) IRRIGATION WHEEL TRACK - 26', 207' & 387' WEST  
AND 154' & 333' EAST
- (B) DIRT ROAD - 50'+/- SOUTH
- (C) METAL FENCE - 458'+/- WEST
- (D) GRAVEL COUNTY ROAD NO. 53 - 480'+/- WEST
- (E) OVERHEAD POWER LINE - 520'+/- WEST

THE NEAREST OVERHEAD POWER LINE IS 520'+/- WEST

NOTICE: According to Colorado law you MUST commence any legal action based upon any defect in this W.L.C. within three years after you first discover such defect. In no event may any action based upon any defect in this W.L.C. be commenced more than ten years from this sold date of the certification shown hereon.

