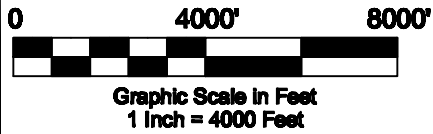
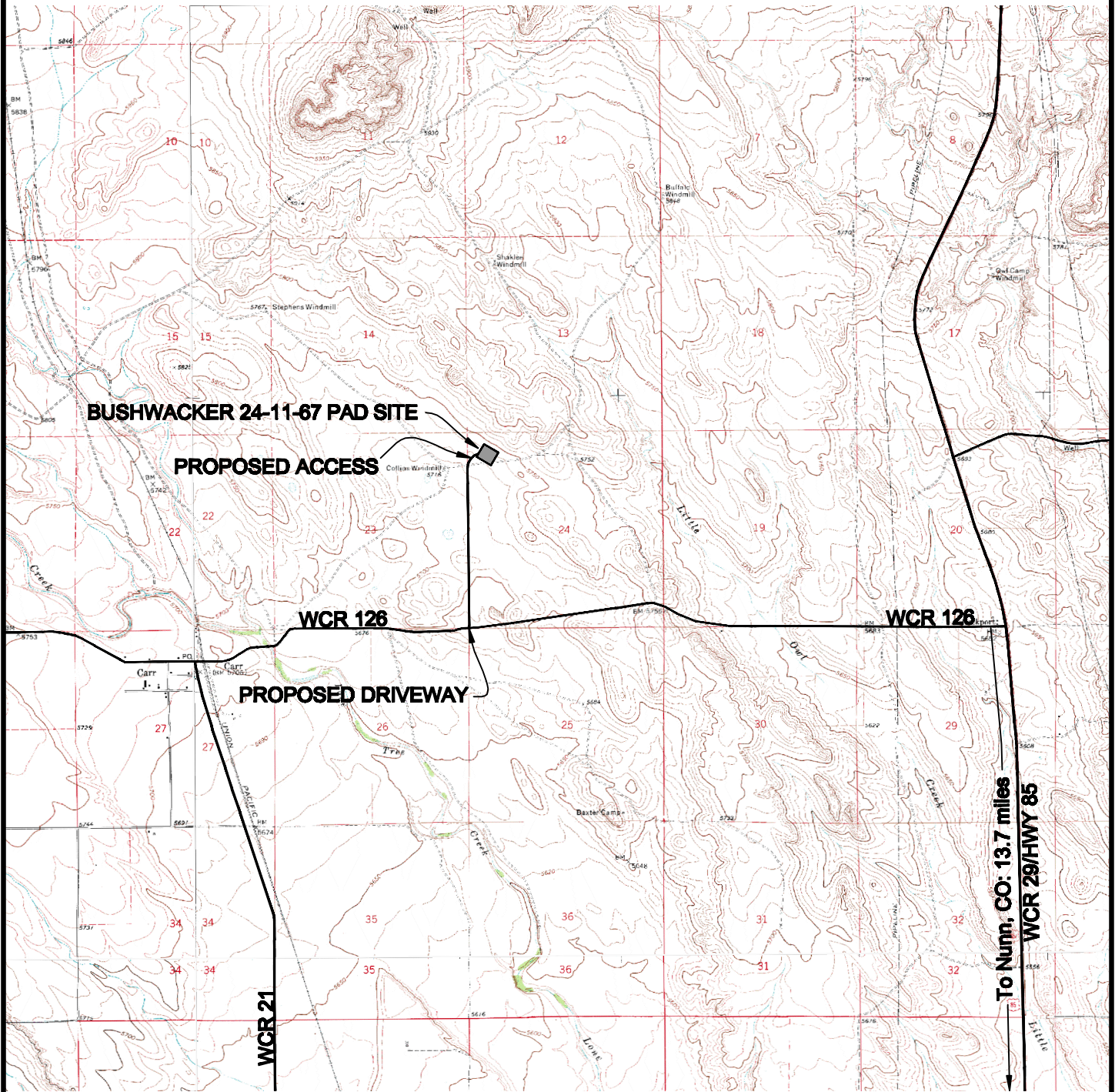


# ACCESS ROAD MAP



## DRIVING DIRECTIONS:

From Nunn, CO, travel North on Hwy 85 approximately 13.7 miles  
 Left on WCR 126, travel West approximately 2.8 miles  
 From Carr, CO: East on WCR 126 approximately 0.42 miles  
 Right on Access Road, travel North approximately 4,759' onto  
 Bushwacker 24-11-67 pad

4/28/2010



**WESTERN LAND SERVICES**

Sheridan, WY 82801 (307)673-1817

DP: L:\Slawson\Permitting\_Booklets\Outlaw... Date: 4-15-10

**SLAWSON EXPLORATION COMPANY, INC**  
**BUSHWACKER 24-11-67**

NW1/4 NW1/4 SECTION 24, T11N R67W  
 BL: SE1/4 SW1/4, S. 24, T11N R67W  
 6TH PM, WELD COUNTY, COLORADO