



01698490

OTHER

1/2



RECEIVED

MAY 07 2010

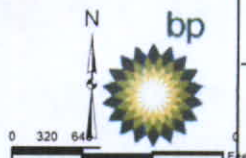
COGCC

Legend

 Facility Boundary

Location Map

BP America Prod. CO.- Durango, CO



CR314 WTS

2 April 2010

LAT: 37°8'4.104" N

LONG: -107°39'44.5" E

SW/NE SEC. 01 T33N R08W

LA PLATA COUNTY, COLORADO N.M.P.M







Red Lines

OIL AND GAS WELLS

• Oil and Gas Wells

× Temporary Point

CITIES TOWNS PLACES

□ Towns and Places

ROADS AND RRS

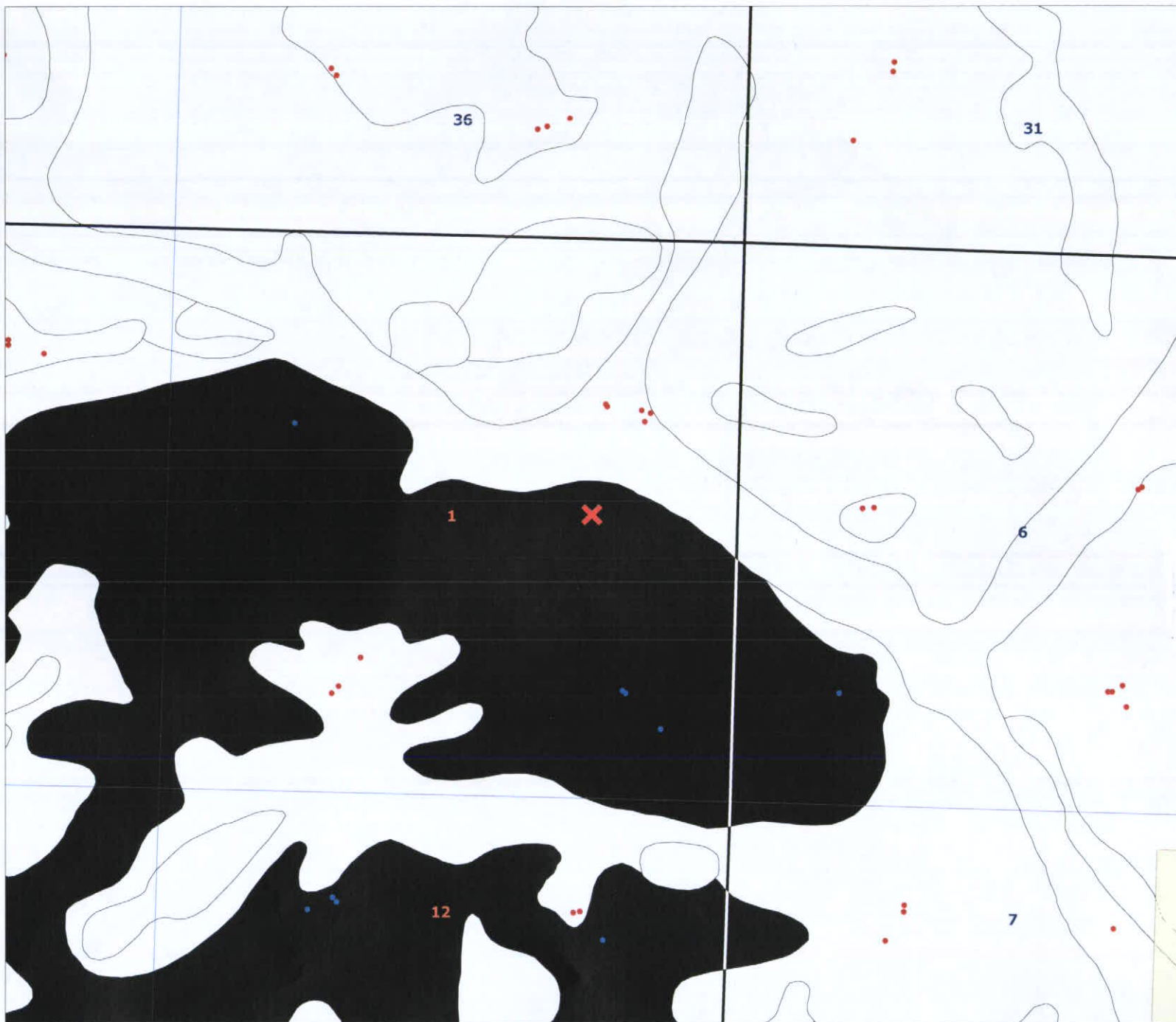
— Major Highways

SAN JUAN BASIN

-- Fruitland PC

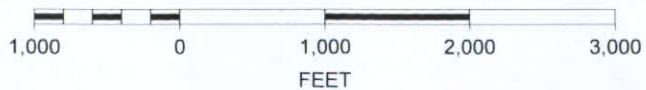
■ MUNICIPAL BOUNDARIES

□ SOILS\_NRCS



RECEIVED  
MAY 07 2010  
COGCC

SCALE 1 : 16,000



2/2