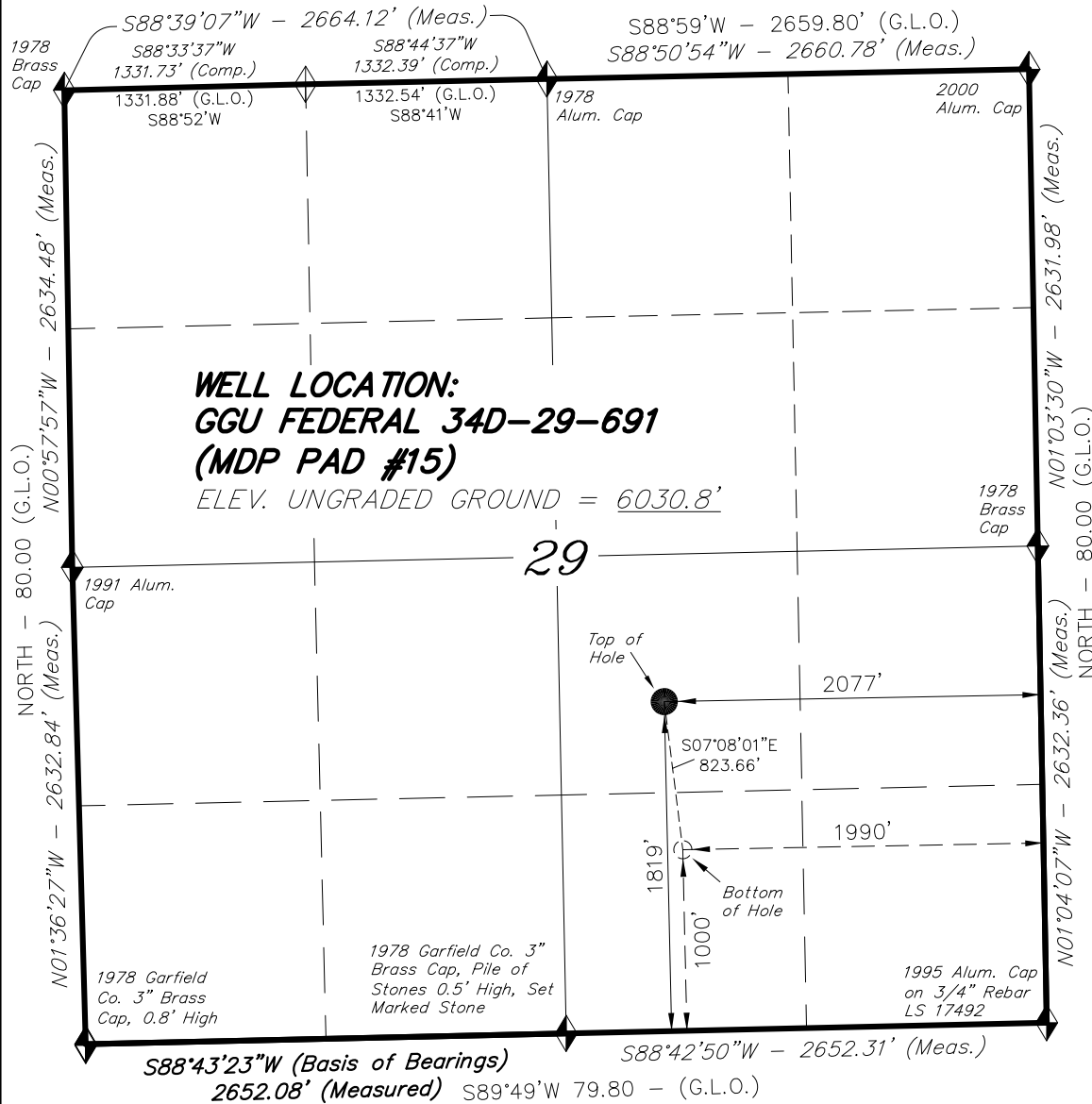
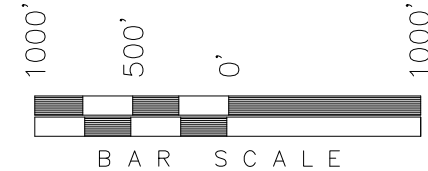


**T6S, R91W, 6th P.M.**

**BILL BARRETT CORP.**



WELL LOCATION, GGU FEDERAL 34D-29-691 (MDP PAD #15), LOCATED AS SHOWN IN THE NW 1/4 SE 1/4 OF SECTION 29, T6S, R91W, 6th P.M. GARFIELD COUNTY, COLORADO.



**NOTES:**

1. Well footages are measured at right angles to the Section Lines.
2. Bearings are based on Global Positioning Satellite observations.
3. G.P.S. Operator: D. Slauch, (PDOP) = 2.7

**IMPROVEMENT NOTE:**

See addendum to legal plat (sheet 2c) for existing improvements within 400' of the proposed well pad.

THIS IS TO CERTIFY THAT THE ABOVE PLAT WAS PREPARED FROM FIELD NOTES OF ACTUAL SURVEYS MADE BY ME OR UNDER MY SUPERVISION. THE LOCATION HAS BEEN STAKED ON THE GROUND AS SHOWN ON THE PLAT, AND THAT THE SAID ARE TRUE AND CORRECT TO THE BEST OF MY KNOWLEDGE AND BELIEF.

*[Signature]*  
 # 30125  
 REGISTERED LAND SURVEYOR  
 REGISTRATION NO. 30125  
 STATE OF COLORADO

**NAD 83 (SURFACE LOCATION)**

LATITUDE = 39°29'47.88"  
 (39.496633)  
 LONGITUDE = 107°34'32.77"  
 (107.575769)

◆ = SECTION CORNERS LOCATED

Basis of elevation is the Rifle 2 Triangulation Station. 39°31'53.80" N Lat. & 107°47'07.78" W Long. (NAD 83). Elevation = 5323.1' (NAVD88).

**TRI STATE LAND SURVEYING & CONSULTING**

180 NORTH VERNAL AVE. - VERNAL, UTAH 84078  
 (435) 781-2501

DATE SURVEYED: 03-23-10	SURVEYED BY: C.D.S.	SHEET <b>2c</b> OF 12
DATE DRAWN: 01-06-10	DRAWN BY: F.T.M.	
REVISED: 03-23-10 F.T.M.	SCALE: 1" = 1000'	