

EnCana Oil & Gas (USA) Inc.
ADDENDUM TO LEGAL PLATS FOR
F12E Well Pad
SECTION 12, T 7 S, R 92 W, 6th P.M.

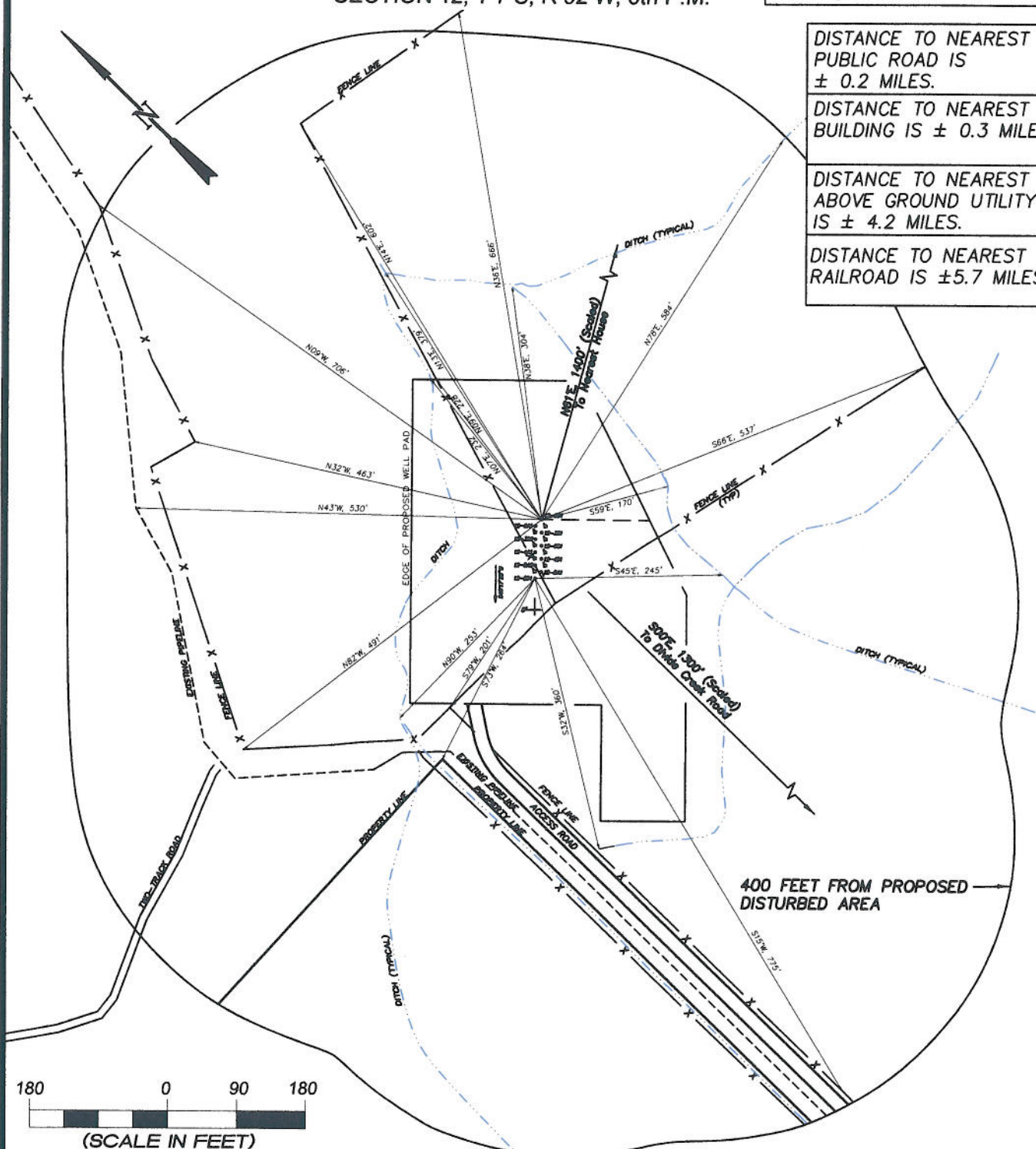
Surface use of pad is grazing.
 Vegetation consists mainly of
 sage brush, oak brush and
 native grasses.

DISTANCE TO NEAREST
 PUBLIC ROAD IS
 ± 0.2 MILES.

DISTANCE TO NEAREST
 BUILDING IS ± 0.3 MILE.

DISTANCE TO NEAREST
 ABOVE GROUND UTILITY
 IS ± 4.2 MILES.

DISTANCE TO NEAREST
 RAILROAD IS ± 5.7 MILES.



906 Main Street
 Evanston, Wyoming 82930
 Phone No. (307) 789-4545

Addendum		Scale: 1" = 180'	SHEET 1k OF 10
Project No.	08-04-53	Date Surveyed: 08/13/08	
Date Drawn:	12/15/09	Latest Revision Date: 1/19/10	