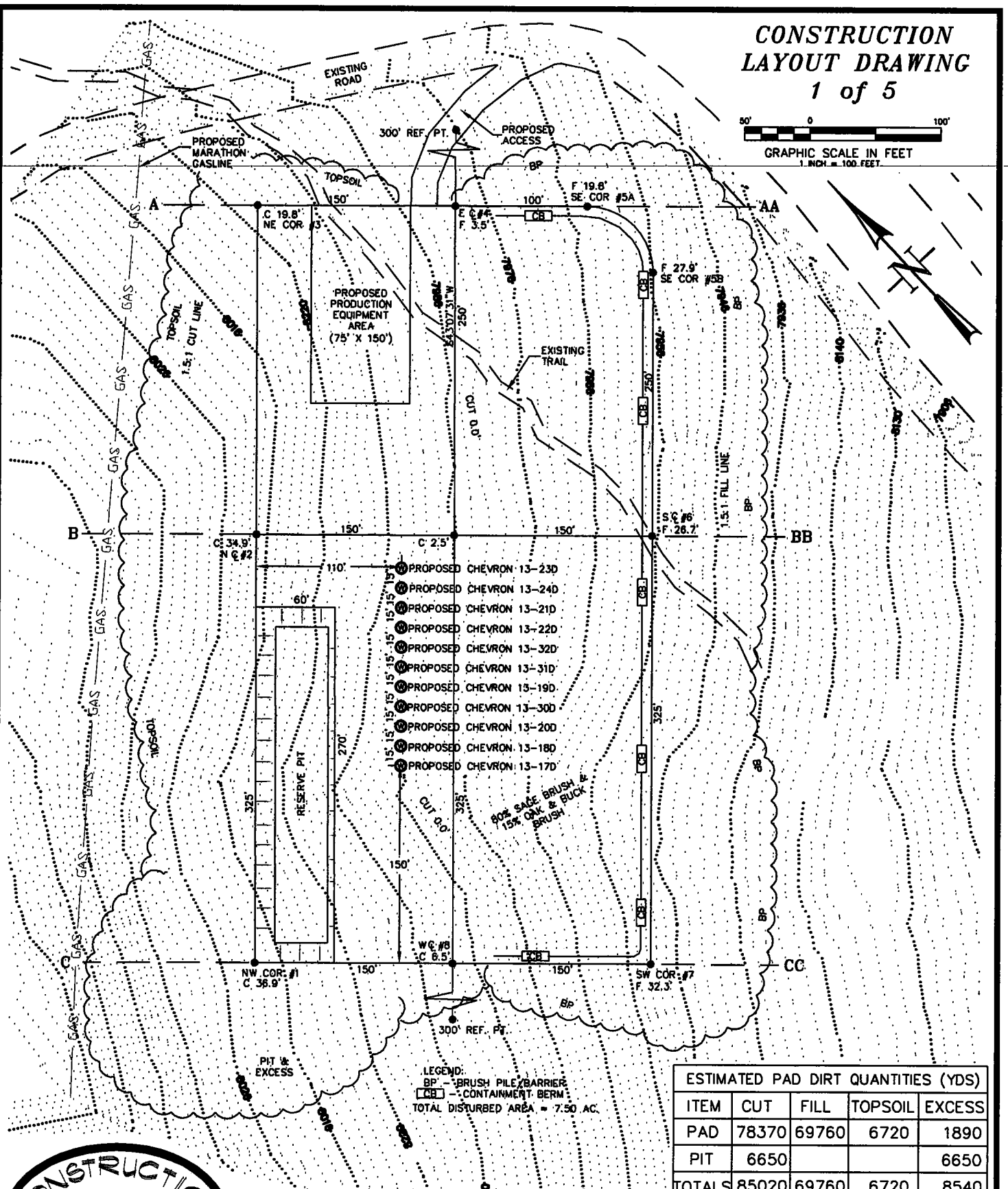


# CONSTRUCTION LAYOUT DRAWING 1 of 5



LEGEND:  
BP - BRUSH PILE BARRIER  
CB - CONTAINMENT BERM  
TOTAL DISTURBED AREA = 7.50 AC.

ESTIMATED PAD DIRT QUANTITIES (YDS)				
ITEM	CUT	FILL	TOPSOIL	EXCESS
PAD	78370	69760	6720	1890
PIT	6650			6650
TOTALS	85020	69760	6720	8540

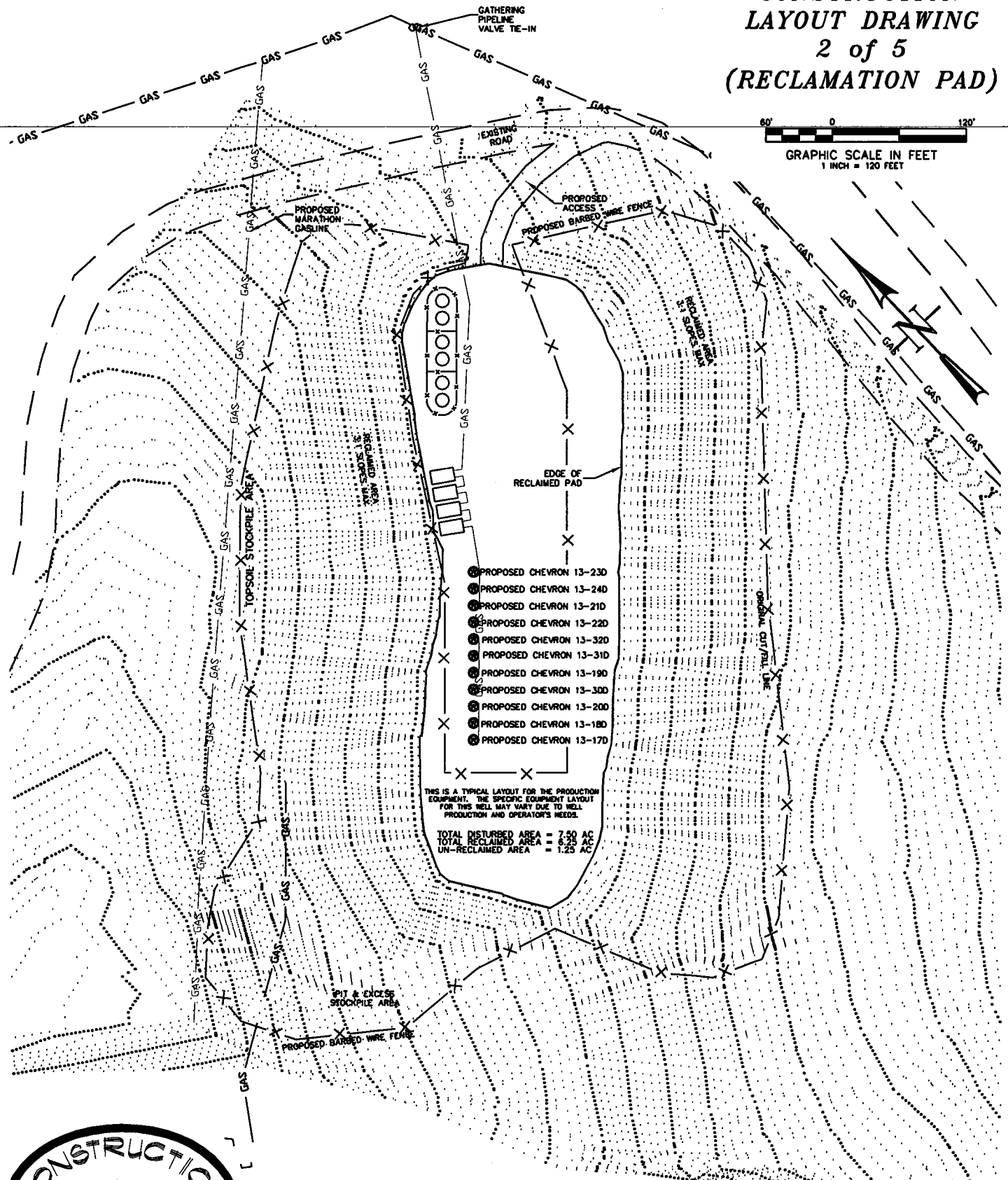


CONSTRUCTION SURVEYS, INC. Chevron F13-697  
 0012 SUNRISE BLVD. SE 1/4 NW 1/4 SECTION 13, T. 6 S., R. 97 W.  
 SILT, CO 81652 BERRY PETROLEUM COMPANY  
 (970)876-5753

SCALE: 1" = 100' SHEET: 6 of 11

# CONSTRUCTION LAYOUT DRAWING 2 of 5 (RECLAMATION PAD)

GRAPHIC SCALE IN FEET  
1 INCH = 120 FEET



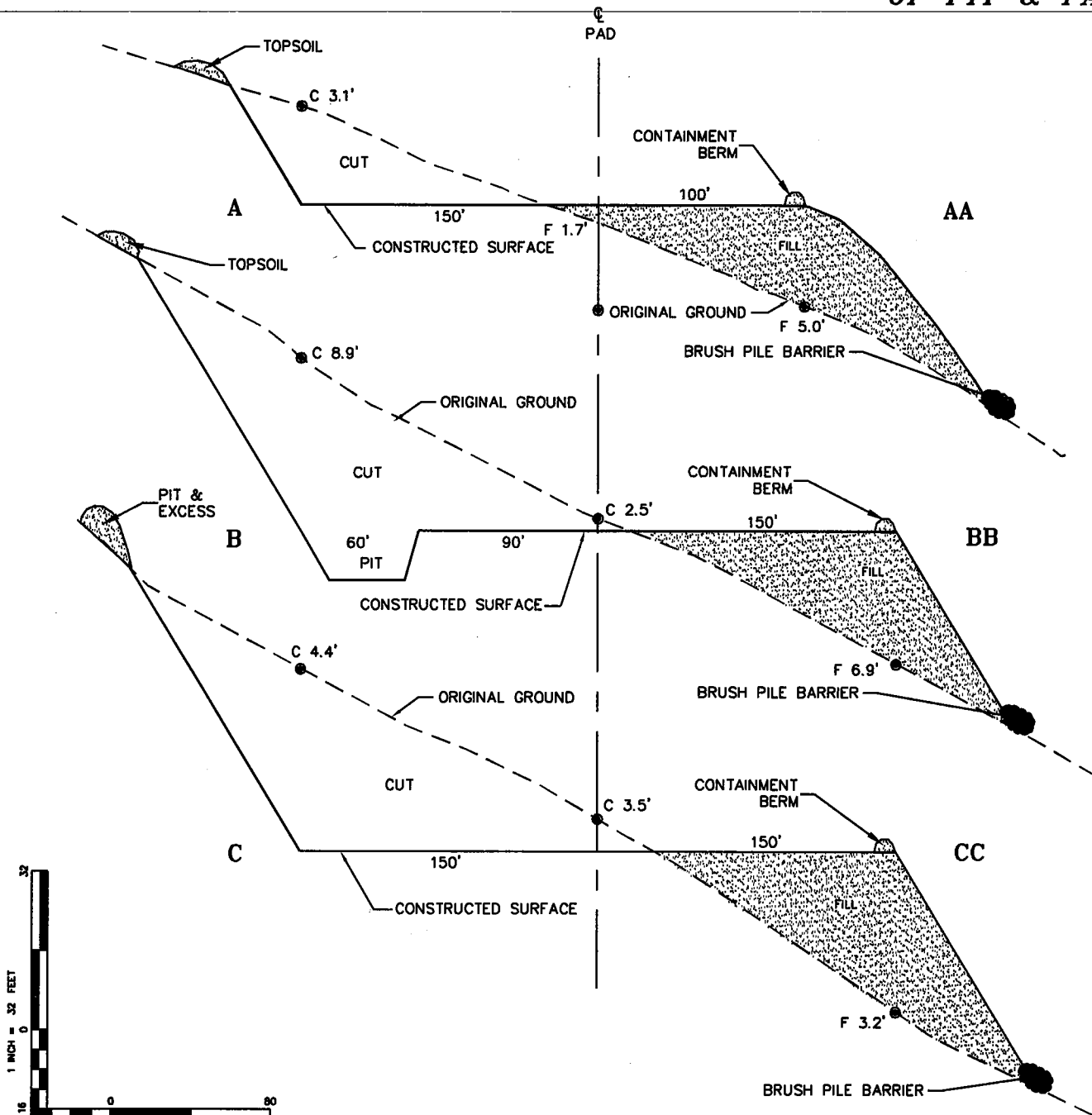
CONSTRUCTION SURVEYS, INC.  
0012 SUNRISE BLVD.  
SILT, CO 81652  
(970)876-5753

Chevron F13-697  
SE 1/4 NW 1/4 SECTION 13, T. 6 S., R. 97 W.  
BERRY PETROLEUM COMPANY

SCALE: 1" = 120'

SHEET: 7 of 11

**CONSTRUCTION  
LAYOUT DRAWING  
3 of 5  
(CROSS SECTIONS  
OF PIT & PAD)**



NOTE:  
ALL CUT/FILL SIDE SLOPES ARE  
1.5:1 UNLESS OTHERWISE NOTED.



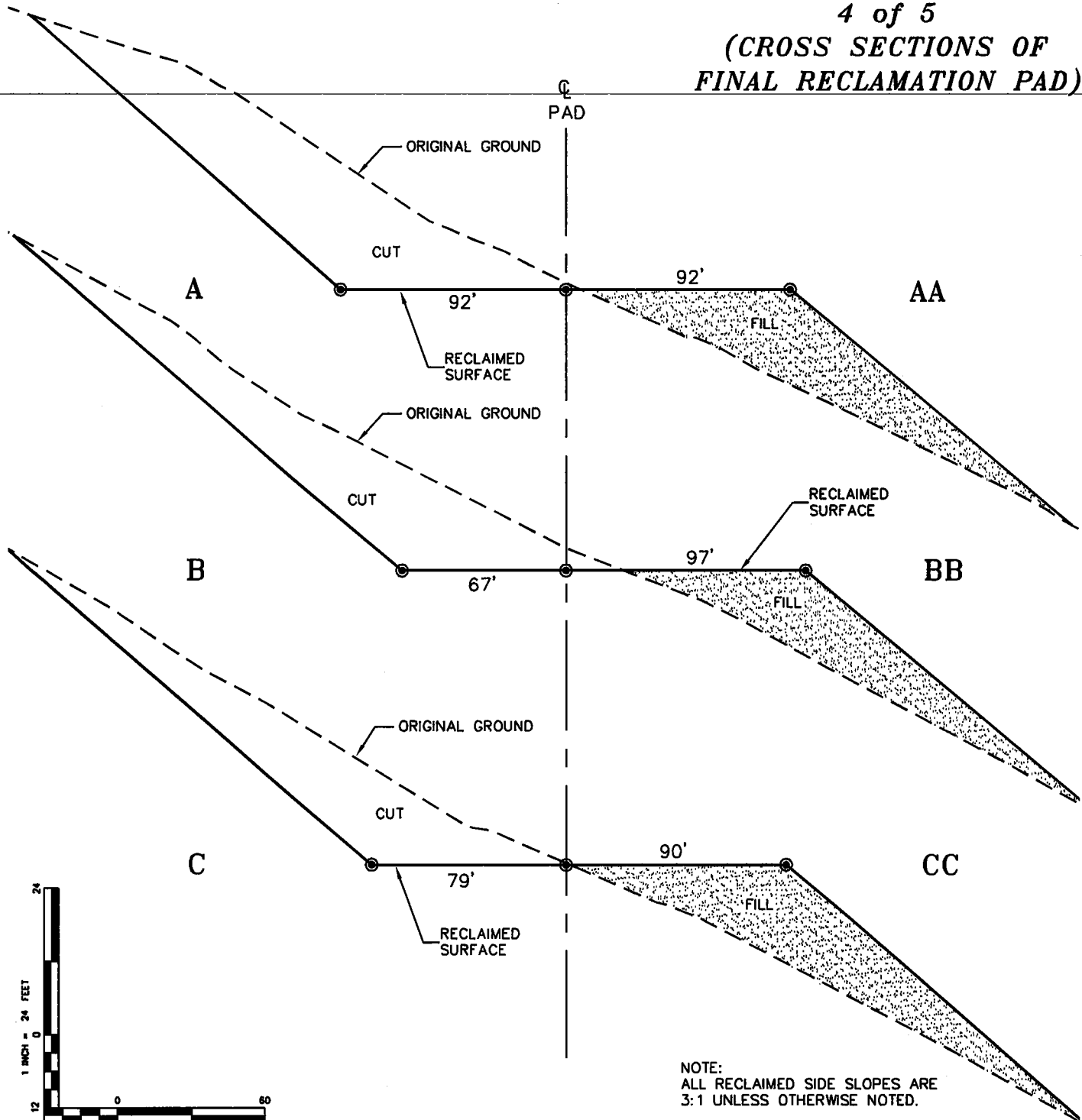
**CONSTRUCTION SURVEYS, INC.**  
0012 SUNRISE BLVD.  
SILT, CO 81652  
(970)876-5753

**Chevron F13-697**  
SE 1/4 NW 1/4 SECTION 13, T. 6 S., R. 97 W.  
**BERRY PETROLEUM COMPANY**

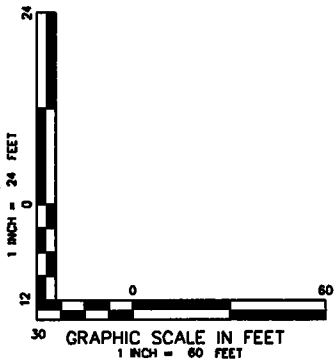
SCALE: AS SHOWN

SHEET: 8 of 11

**CONSTRUCTION  
LAYOUT DRAWING  
4 of 5  
(CROSS SECTIONS OF  
FINAL RECLAMATION PAD)**



NOTE:  
ALL RECLAIMED SIDE SLOPES ARE  
3:1 UNLESS OTHERWISE NOTED.



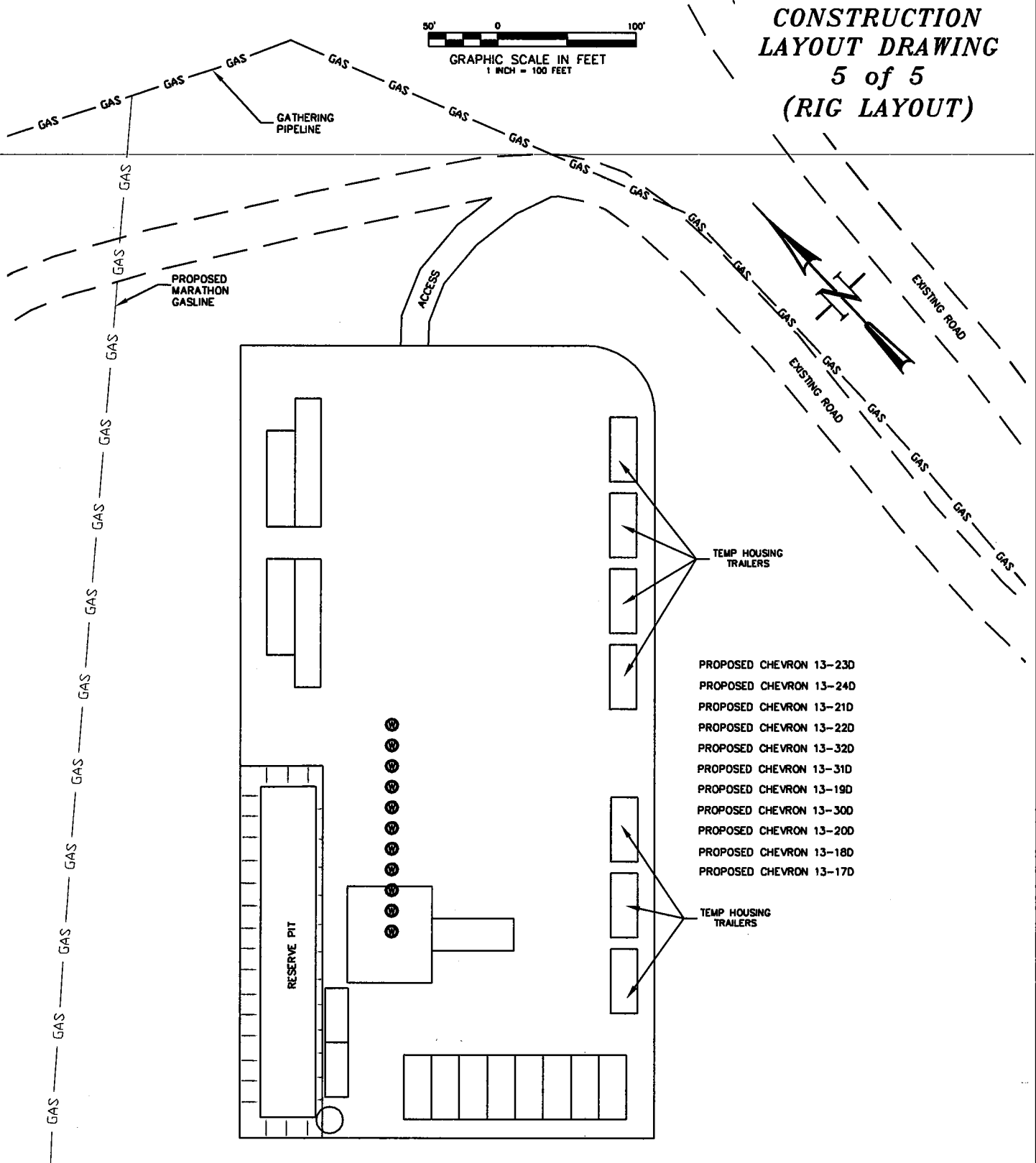
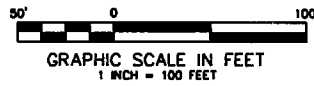
**CONSTRUCTION SURVEYS, INC.**  
0012 SUNRISE BLVD.  
SILT, CO 81652  
(970)876-5753

**Chevron F13-697**  
SE 1/4 NW 1/4 SECTION 13, T. 6 S., R. 97 W.  
**BERRY PETROLEUM COMPANY**

SCALE: AS SHOWN

SHEET: 9 of 11

**CONSTRUCTION  
LAYOUT DRAWING  
5 of 5  
(RIG LAYOUT)**



- PROPOSED CHEVRON 13-23D
- PROPOSED CHEVRON 13-24D
- PROPOSED CHEVRON 13-21D
- PROPOSED CHEVRON 13-22D
- PROPOSED CHEVRON 13-32D
- PROPOSED CHEVRON 13-31D
- PROPOSED CHEVRON 13-19D
- PROPOSED CHEVRON 13-30D
- PROPOSED CHEVRON 13-20D
- PROPOSED CHEVRON 13-18D
- PROPOSED CHEVRON 13-17D



**CONSTRUCTION SURVEYS, INC.**  
0012 SUNRISE BLVD.  
SILT, CO 81652  
(970)876-5753

**Chevron F13-697**  
SE 1/4 NW 1/4 SECTION 13, T. 6 S., R. 97 W.  
**BERRY PETROLEUM COMPANY**

SCALE: 1" = 100'

SHEET: 10 of 11