

DALEY LAND SURVEYING, INC.

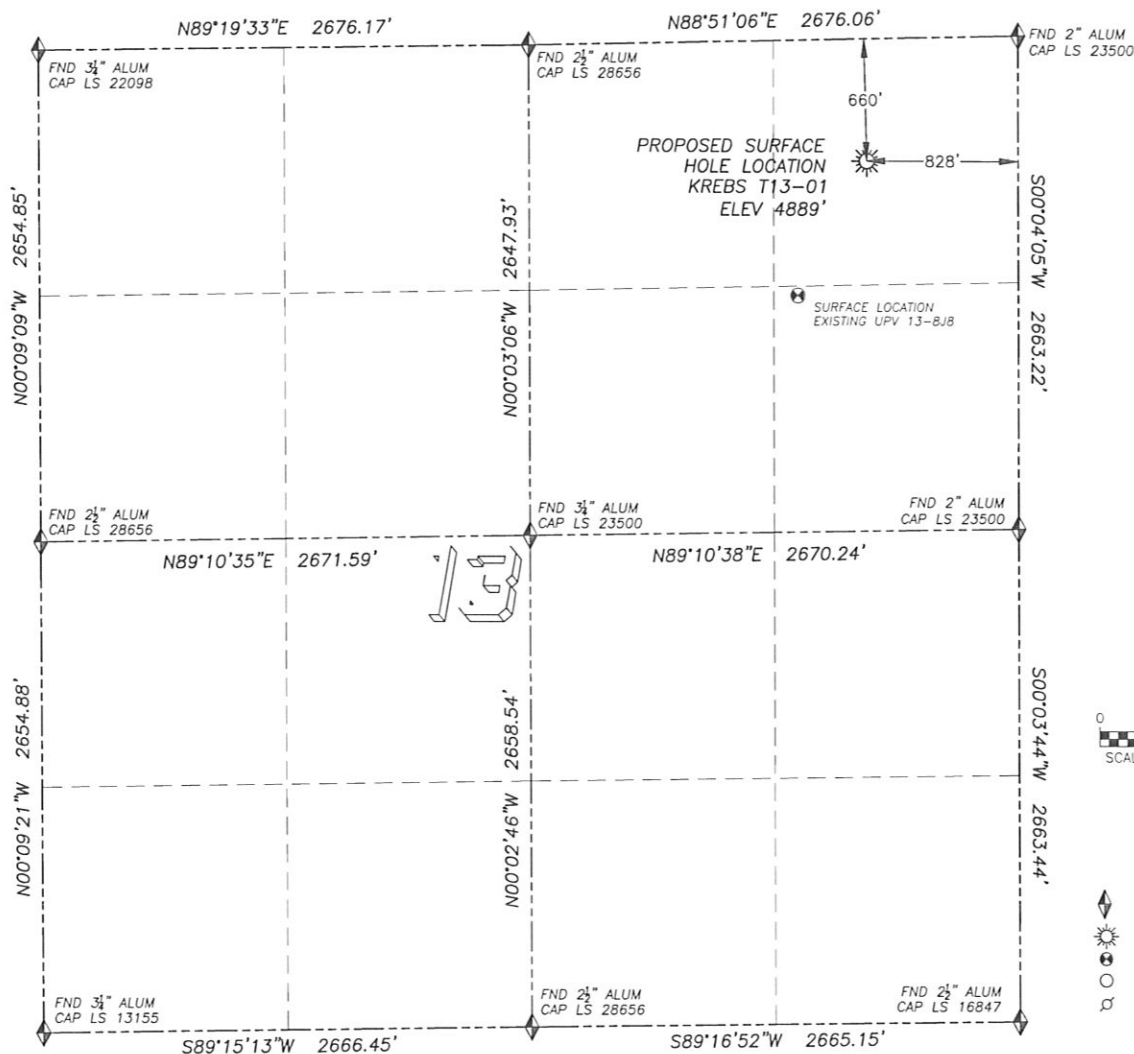
PARKER, CO. 80134

303 953 9841

# WELL LOCATION CERTIFICATE

## KERBS T13-01

SECTION 13, TOWNSHIP 3 NORTH, RANGE 68 WEST OF THE 6TH PRINCIPAL MERIDIAN

**LEGEND**

- FOUND MONUMENT AS DESCRIBED
- PROPOSED WELL
- EXISTING WELL
- BOTTOM HOLE
- ABANDONED WELL

**NAD 83 LATITUDE AND LONGITUDE****KERBS T13-01 SURFACE HOLE:**

LATITUDE: N40.23186°  
 LONGITUDE: W104.94470°  
 ELEVATION: 4889'  
 PDOP: 1.2  
 660' FNL, 828' FEL

**NEAREST EXISTING WELL:**

UVP 13-8J8 SURFACE HOLE  
 LATITUDE: N40.22987°  
 LONGITUDE: W104.94606°  
 ELEVATION: 4889'  
 818' SOUTHWEST

QUARTER/QUARTER: NE4/NE4

NEAREST APPARENT PROPERTY LINE:  
 298'± EAST

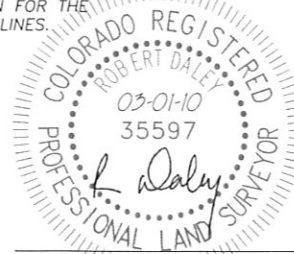
IN ACCORDANCE WITH A REQUEST FROM MATT CAMPBELL OF NOBLE ENERGY INC., DALEY LAND SURVEYING, INC. HAS DETERMINED THE SURFACE LOCATION OF THE KERBS T13-01 WELL TO BE 660' FNL, 828' FEL, AS MEASURED AT NINETY (90) DEGREES FROM THE SECTION LINES OF SECTION 13, TOWNSHIP 3 NORTH, RANGE 68 WEST OF THE 6TH PRINCIPAL MERIDIAN, WELD COUNTY COLORADO.

I HEREBY CERTIFY THAT THIS WELL LOCATION CERTIFICATE WAS PREPARED BY ME OR UNDER MY DIRECT SUPERVISION, THAT THE WORK WAS COMPLETED ON 2/24/2010 FOR AND ON BEHALF OF NOBLE ENERGY, INC., AND THAT THIS MAP DOES NOT REPRESENT A BOUNDARY SURVEY, IT IS NOT A LAND SURVEY PLAT OR AN IMPROVEMENT SURVEY PLAT AND IT IS NOT TO BE RELIED UPON FOR THE ESTABLISHMENT OF FENCE, BUILDING OR OTHER FUTURE IMPROVEMENT LINES.

**NOTES:**

- 1) BASIS OF BEARING FOR THIS MAP IS ASSUMED AND BASED UPON GPS OBSERVATIONS MADE BETWEEN MONUMENTS LOCATED AT THE NORTHEAST AND EAST QUARTER CORNERS OF SECTION 13, T.3N., R.68W., AND ALL BEARINGS SHOWN HEREON ARE RELATIVE THERETO.
- 2) HORIZONTAL DATUM IS NAD83.
- 3) VERTICAL DATUM IS NAVD83, DETERMINED FROM GPS-RTK OBSERVATIONS PROCESSED THROUGH OPUS, UTILIZING THE GEOID03 MODEL.
- 4) SEE VISIBLE IMPROVEMENTS EXHIBIT FOR VISIBLE IMPROVEMENTS WITHIN 600' OF PROPOSED SURFACE HOLE LOCATION
- 5) SURFACE USE: AGRICULTURAL

NOTICE: According to Colorado law you MUST commence any legal action based upon any defect in this W.L.C. within three years after you first discover such defect. In no event may any action based upon any such defect in this W.L.C. be commenced more than ten years from the date of the certification shown herein.



FOR AND ON BEHALF OF  
 DALEY LAND SURVEYING INC.,  
 Robert Daley, PLS 35597

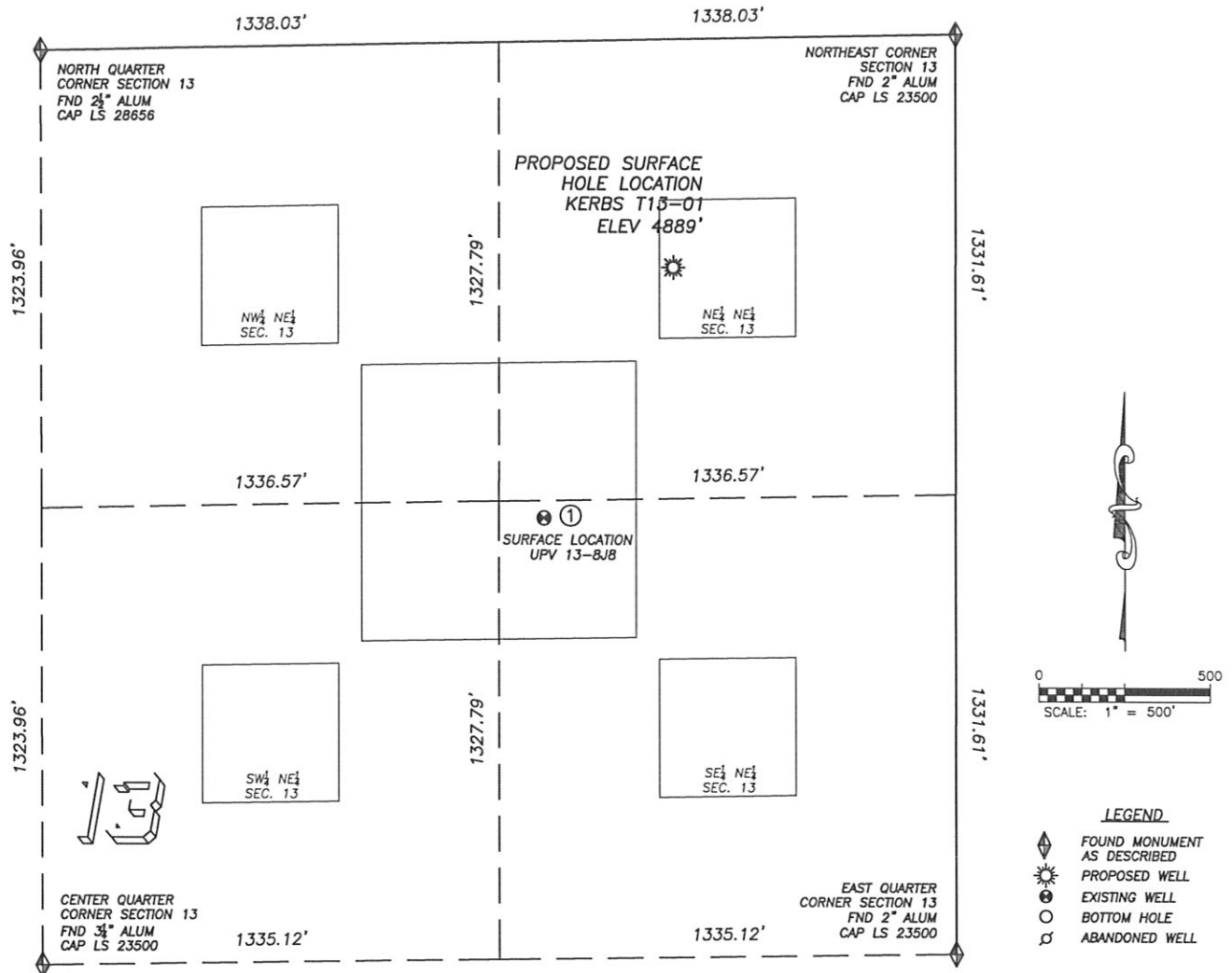
DALEY LAND SURVEYING, INC.

PARKER, CO. 80134

303 953 9841

# SITE SKETCH KERBS T13-01

SECTION 13, TOWNSHIP 3 NORTH, RANGE 68 WEST OF THE 6TH PRINCIPAL MERIDIAN



①

UPV 13-8JB  
SE/NE SEC. 13  
1378' FNL, 1205' FEL  
818' SW OF PROPOSED  
SURFACE HOLE LOCATION  
LAT. N40.22987°  
LONG. W104.94606°  
EL: 4889'  
PDOP 1.7

## NOTES:

- 1) THIS DOES NOT REPRESENT A BOUNDARY SURVEY
- 2) THE LATITUDES AND LONGITUDES SHOWN ARE REFERENCED TO NAD83
- 3) DATUM FOR ELEVATION IS NAVD88. ELEVATIONS ARE DERIVED FROM GPS-RTK OBSERVATIONS PROCESSED THROUGH OPUS, UTILIZING THE GEOID03 MODEL