

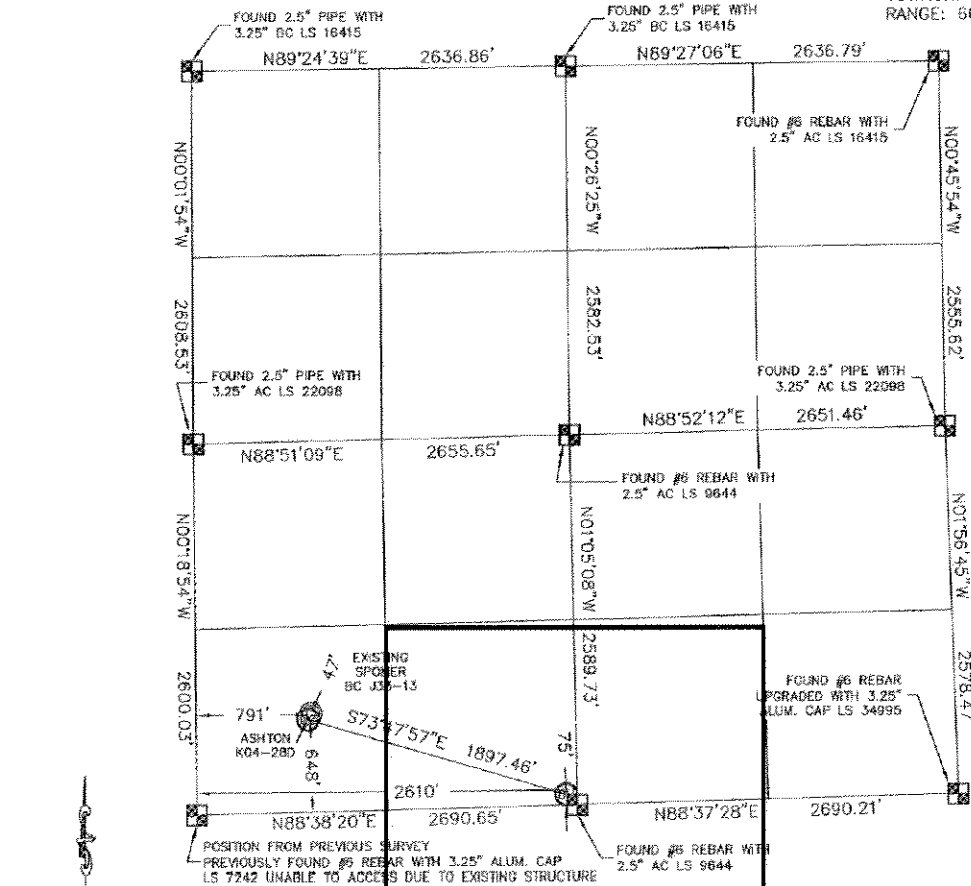
Proposed 318Ae Spacing Unit

KING SURVEYORS, INC. 650 GARDEN DR. WINDSOR, CO 80550

WELL LOCATION CERTIFICATE

THIS MAP DOES NOT REPRESENT A BOUNDARY SURVEY

SECTION: 33
TOWNSHIP: 5N
RANGE: 66W



In accordance with a request from Matt Campbell with Noble Energy Inc. King Surveyors Inc. has determined the surface location of the ASHTON K04-28D to be 648' from the SOUTH line and 791' from the WEST line and the bottom hole to be 75' from the SOUTH line and 2610' from the WEST line as measured at right angles from the section line of Section 33, Township 5 North, Range 66 West of the Sixth Principal Meridian, County of Weld, State of Colorado. I hereby state that this Well Location Certificate was prepared by me under my direct supervision, that the fieldwork was completed on May 20, 2009, for and on behalf of Noble Energy Inc. That this is not a Land Survey Plot or an Improvement Survey Plot, and that it is not to be relied upon for establishment of fence, building, or other future improvement lines.

- NOTE:
- 1) Bearings shown are Grid Bearings of the Colorado State Plane Coordinate System, North Zone, North American Datum 1983/92.
 - 2) Ground elevations are based on an observed GPS elevation (NAVD 1988 DATUM).
 - 3) NEAREST EXISTING WELL: SPOMER BC J33-13 47'
 - 4) IMPROVEMENTS: See WELL IMPROVEMENTS exhibit for all improvements within 400' of well head
 - 5) SURFACE USE: EXISTING WELL SITE/PASTURE

SURFACE LOCATION
LATITUDE: 40.35076°N
LONGITUDE: 104.79136°W
FOOT: 1.5
ELEV: 4705
1/4, 1/4, SW1/4, SW1/4
NEAREST PROPERTY LINE: 648' SOUTH

BOTTOM HOLE
LATITUDE: 40.34927°N
LONGITUDE: 104.78484°W

NOTE
According to Colorado law, you must commence any legal action based upon any defect in this W.L.C. within three years after you discover such defect. In no event, may any action based upon any defect in this survey be commenced more than ten years after the date of the certificate shown hereon. (13-80-105 C.R.S.)

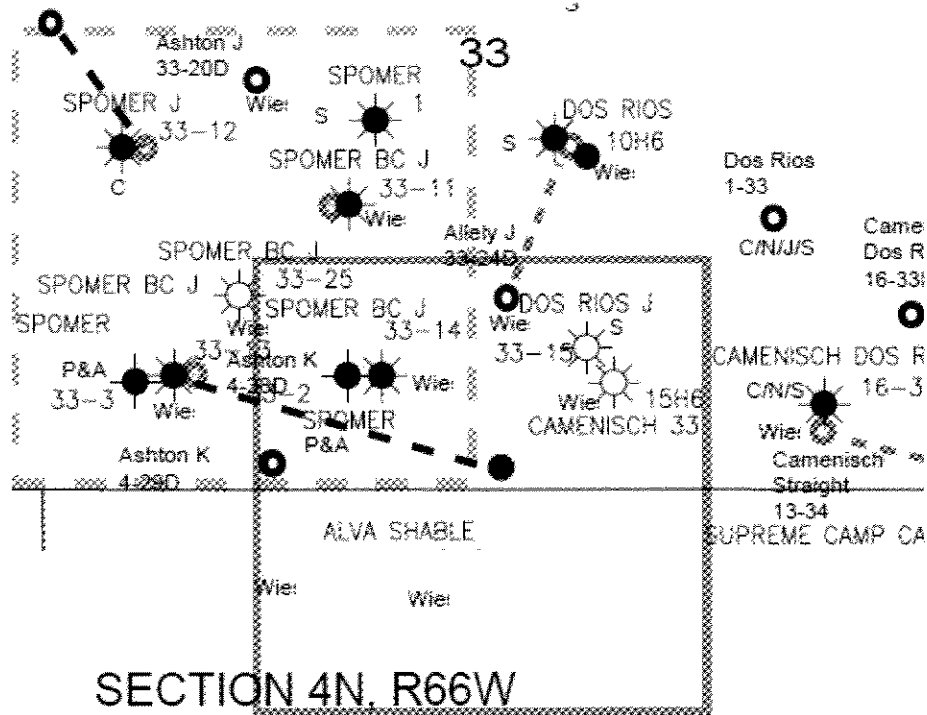
LEGEND

- = ALIQUOT MONUMENT AS DESCRIBED
 = CALCULATED POSITION

Steven A. King, On behalf of King Surveyors, Inc.
Licensed Land Surveyor No. 34995
State of Colorado

PROJECT#: 2008108

Ashton K 04-28D
SWSE, Section 33, T5N, R66W



LEGEND



Proposed 160 acre Spacing Unit



Bottom Hole Located SWSE, Section 33, T5N, R66W

The governmental $\frac{1}{4}$ Section has less than 8 bottom hole wells producing from the Codell, Niobrara, & J-Sand Formations.