



# Berry Petroleum Company

1999 Broadway, Suite 3700  
Denver, CO 80202

Main (303) 999-4400  
Fax (303) 999-4401

[www.bry.com](http://www.bry.com)

April 21, 2010

Walter L. Jones  
Chevron U.S.A. Inc.  
11111 S. Wilcrest  
Room N-1045  
Houston, TX 77099

RE: 30 Day Notice Requirement (Rule 305 and 306)  
Chevron 19-17D, 19-18D, 19-19D,  
19-20D, and 19-21D  
**C19 596 Pad** -Lot 1 Section 19 5S 96W  
Garfield County, Colorado

Dear Mr. Jones:

Please be advised that Berry Petroleum Company will be filing permits for the wells referenced above with the Colorado Oil and Gas Conservation Commission.

The enclosed notification, pursuant to Rule 305 and 306, is required as part of the permitting process. There has been no changes on land use, lease description. The pad has not been built. The pit has not been constructed. The permits will require surface disturbance of the pad. The location does not require a variance from any of the rules listed in Rule 306.d.(1).(A).(ii). The location is not in a wildlife restricted surface occupancy area. This location is not in a wildlife sensitive habitat area. If applicable, please sign and date where indicated and return to my attention.

Please contact the undersigned if you have any questions.

Thank you for your assistance in this matter.

Very truly yours,

Jerry L. Gonzalez  
Senior Landman  
313-999-4207

:enclosures

cc: Janni Keidel  
Land Well files

**NOTICE REQUIREMENTS (RULE 305)**  
**(C19 596 Pad)**

**Re: Well Name – Chevron 19-17D, 19-18D, 19-19D, 19-20D, and 19-21D –Lot 1 of Section 19, 5S 96W, Garfield County, CO**

In accordance with the Colorado Oil and Gas Conservation Commission for Notices of Oil and Gas Operations, Rule 305, the following information is required to be provided:

- Operations on the above referenced wells are estimated to commence June 10, 2010.
- The operator will be: Berry Petroleum Company  
1999 Broadway, Suite # 3700  
Denver, Colorado 80202  
(303) 999-4400
- You may contact: Jerry L. Gonzalez, Senior Landman at (303) 999-4207, if you have any questions regarding this notice.

**Chevron 19-17D**

The legal description of the lands upon which operations will be conducted are:

Surface: 449' FNL and 1,342' FWL, Lot 1, Sec. 19, T5S, R96W,  
Bottom: 1,202' FNL and 832' FWL, Lot 1, Sec. 19, T5S, R96W,  
Garfield County, Colorado.

**Chevron 19-18D**

The legal description of the lands upon which operations will be conducted are:

Surface: 442' FNL and 1,350' FWL, Lot 1, Sec. 19, T5S, R96W,  
Bottom: 952' FNL and 820' FWL, Lot 1, Sec. 19, T5S, R96W,  
Garfield County, Colorado.

**Chevron 19-19D**

The legal description of the lands upon which operations will be conducted are:

Surface: 436' FNL and 1,358' FWL, Lot 1, Sec. 19, T5S, R96W,  
Bottom: 702' FNL and 853' FWL, Lot 1, Sec. 19, T5S, R96W,  
Garfield County, Colorado.

Page 2

**Chevron 19-17D, 19-18D, 19-19D,  
19-20D, and 19-21D**

**C19 596 Pad**

Chevron U.S.A. Inc.

April 21, 2010

**Chevron 19-20D**

The legal description of the lands upon which operations will be conducted are:

Surface: 430' FNL and 1,366' FWL, Lot 1, Sec. 19, T5S, R96W,  
Bottom: 427' FNL and 842' FWL, Lot 1, Sec. 19, T5S, R96W,  
Garfield County, Colorado.

**Chevron 19-21D**

The legal description of the lands upon which operations will be conducted are:

Surface: 423' FNL and 1,373' FWL, Lot 1, Sec. 19, T5S, R96W,  
Bottom: 166' FNL and 790' FWL, Lot 1, Sec. 19, T5S, R96W,  
Garfield County, Colorado.

- The surface owner has the responsibility for notifying any affected tenant of the proposed operations.
- A brochure describing surface owner rights is available upon request from:  
Colorado Oil and Gas Conservation Commission  
1120 Lincoln Street  
Suite 801  
Denver, Co 80203

By signing below, the surface owner waives the above notification requirements of Rule 305.

Chevron U.S.A. Inc.

By: \_\_\_\_\_

Printed Name: \_\_\_\_\_

Title: \_\_\_\_\_

Date: \_\_\_\_\_

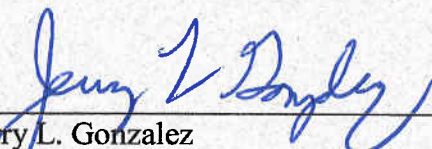
**SURFACE OWNER CONSULTATION (RULE 306)**  
**(C19 596 Pad)**

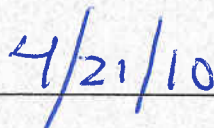
Berry Petroleum Company confirms that the Surface Owner Consultation requirements of Rule 306 have been completed or waived for the following proposed well locations.

**Re: Well Name – Chevron 19-17D, 19-18D, 19-19D, 19-20D, and 19-21D –Lot 1 of Section 19, 5S 96W, Garfield County, CO**

**Road Description:** Existing roadway use and new construction as required for access was previously agreed upon by all parties.

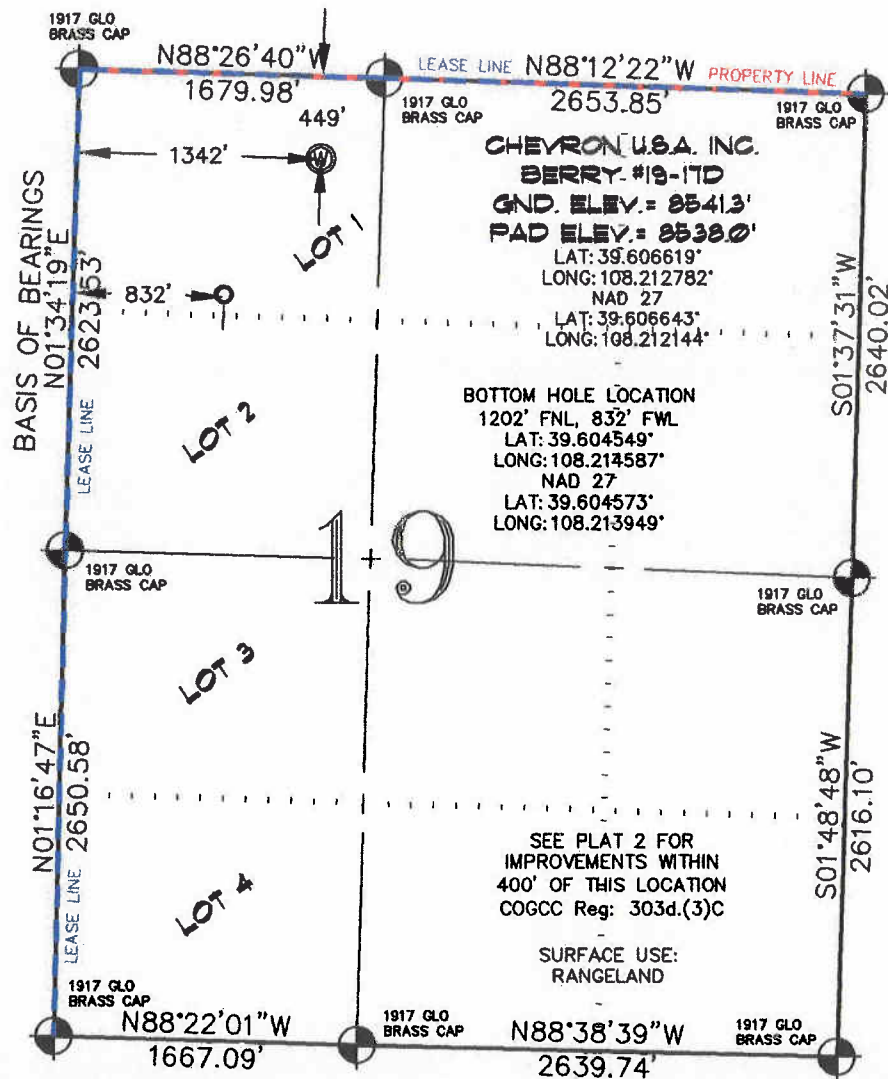
Berry Petroleum Company

  
\_\_\_\_\_  
Jerry L. Gonzalez  
Senior Landman

  
\_\_\_\_\_  
Date

SEC. 19, T. 5 S., R. 96 W. OF THE 6TH P.M.

Chevron C-19-596  
Pad Location



### -LEGEND-

- SECTION CORNER LOCATION BASED ON GLO RECORD INFORMATION
- ⊙ FIELD SURVEYED SECTION CORNER LOCATIONS
- ⊙ FIELD SURVEYED PAD LOCATION
- CALCULATED BOTTOM HOLE LOCATION

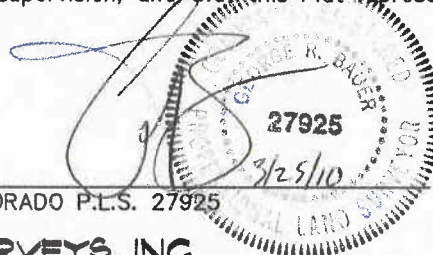
THIS WELL LOCATION PLAT WAS PREPARED FOR BERRY PETROLEUM COMPANY, TO LOCATE THE BERRY #19-17D WELL, 449 FEET FROM THE NORTH LINE AND 1342 FEET FROM THE WEST LINE IN LOT 1 OF SECTION 19, T. 5 S., R. 96 W. OF THE 6TH P.M. GARFIELD COUNTY, COLORADO.

### REFERENCE NOTES

- 1) T. 5 S., R. 96 W., 6TH P.M. GLO PLAT.
- 2) U.S.G.S. QUAD: CIRLCE DOT GULCH, CO
- 3) ELEVATIONS BASED ON N.A.V.D. 1988
- 4) LATITUDES AND LONGITUDES ARE BASED ON NAD 83, COLORADO CENTRAL ZONE.
- 5) GPS OPERATOR ROBERT WOOD, OBSERVED A PDOP OF 2.6.
- 6) ALL GPS OBSERVATIONS ARE IN COMPLIANCE WITH COGCC RULE NO. 215.
- 7) SURFACE AND BOTTOM HOLE LOCATIONS ARE MEASURED 90° FROM SECTION LINES.

### SURVEYOR'S CERTIFICATE

I, George R. Bauer: a Professional Land Surveyor in the State of Colorado do hereby certify that this Survey was made under my direct supervision, and that this Plat represents said Survey.



COLORADO P.L.S. 27925



CONSTRUCTION SURVEYS, INC.

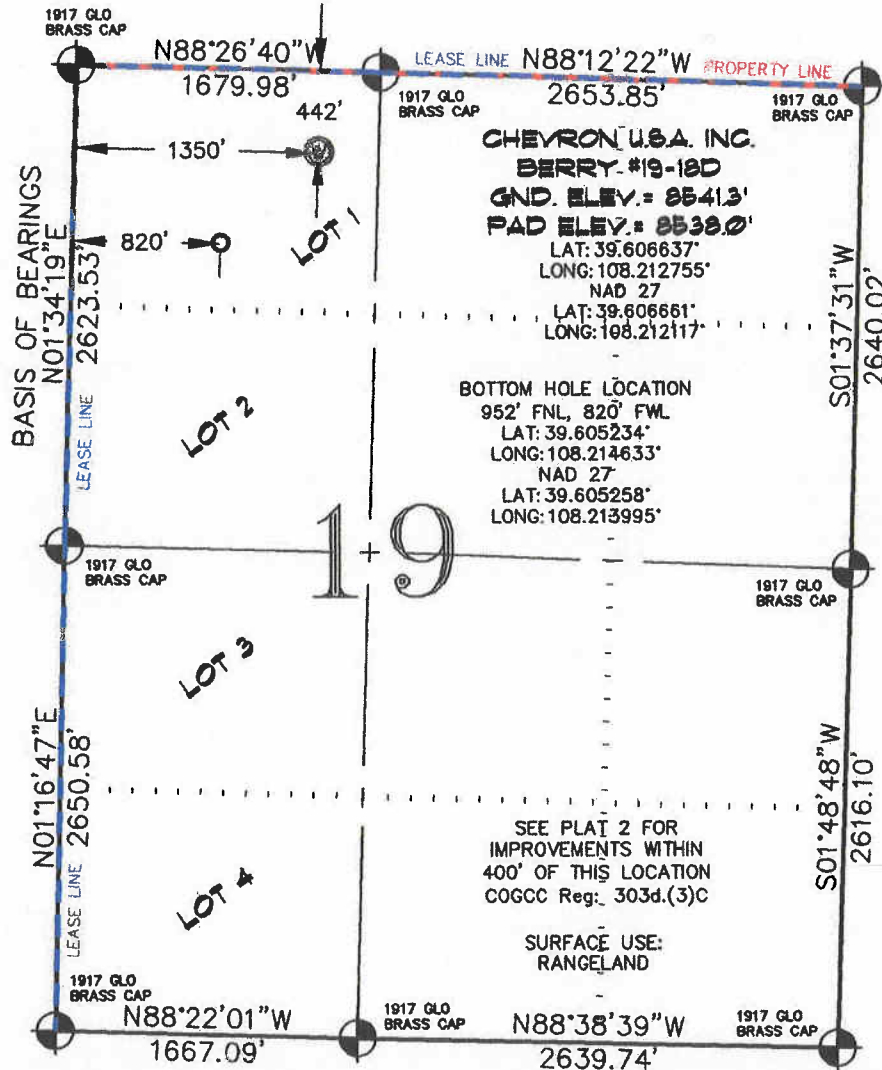
2012 SUNRISE BLVD.  
SILT, CO 81652  
(970)876-5753

VIEW: 1A

SURVEYED: 12/08/09	SCALE: 1" = 1000'
DRAFTED: 12/21/09	DWG: CHEVRON C-19-596
CHECKED: 03/24/10	SHEET: 1 of 11

SEC. 19, T. 5 S., R. 96 W. OF THE 6TH P.M.

Chevron C-19-596  
Pad Location



### -LEGEND-

- SECTION CORNER LOCATION BASED ON GLO RECORD INFORMATION
- ⊙ FIELD SURVEYED SECTION CORNER LOCATIONS
- ⊙ FIELD SURVEYED PAD LOCATION
- CALCULATED BOTTOM HOLE LOCATION

**THIS WELL LOCATION PLAT WAS PREPARED FOR BERRY PETROLEUM COMPANY, TO LOCATE THE BERRY #19-18D WELL, 442 FEET FROM THE NORTH LINE AND 1350 FEET FROM THE WEST LINE IN LOT 1 OF SECTION 19, T. 5 S., R. 96 W. OF THE 6TH P.M. GARFIELD COUNTY, COLORADO.**

### REFERENCE NOTES

- 1) T. 5 S., R. 96 W., 6TH P.M. GLO PLAT.
- 2) U.S.G.S. QUAD: CIRLCE DOT GULCH, CO
- 3) ELEVATIONS BASED ON N.A.V.D. 1988
- 4) LATITUDES AND LONGITUDES ARE BASED ON NAD 83, COLORADO CENTRAL ZONE.
- 5) GPS OPERATOR ROBERT WOOD, OBSERVED A PDOP OF 2.6.
- 6) ALL GPS OBSERVATIONS ARE IN COMPLIANCE WITH COGCC RULE NO. 215.
- 7) SURFACE AND BOTTOM HOLE LOCATIONS ARE MEASURED 90° FROM SECTION LINES.

### SURVEYOR'S CERTIFICATE

I, George R. Bauer, a Professional Land Surveyor in the State of Colorado do hereby certify that this Survey was made under my direct supervision, and that ~~the~~ this represents said Survey.



COLORADO P.L.S. 27925

VIEW: 1B



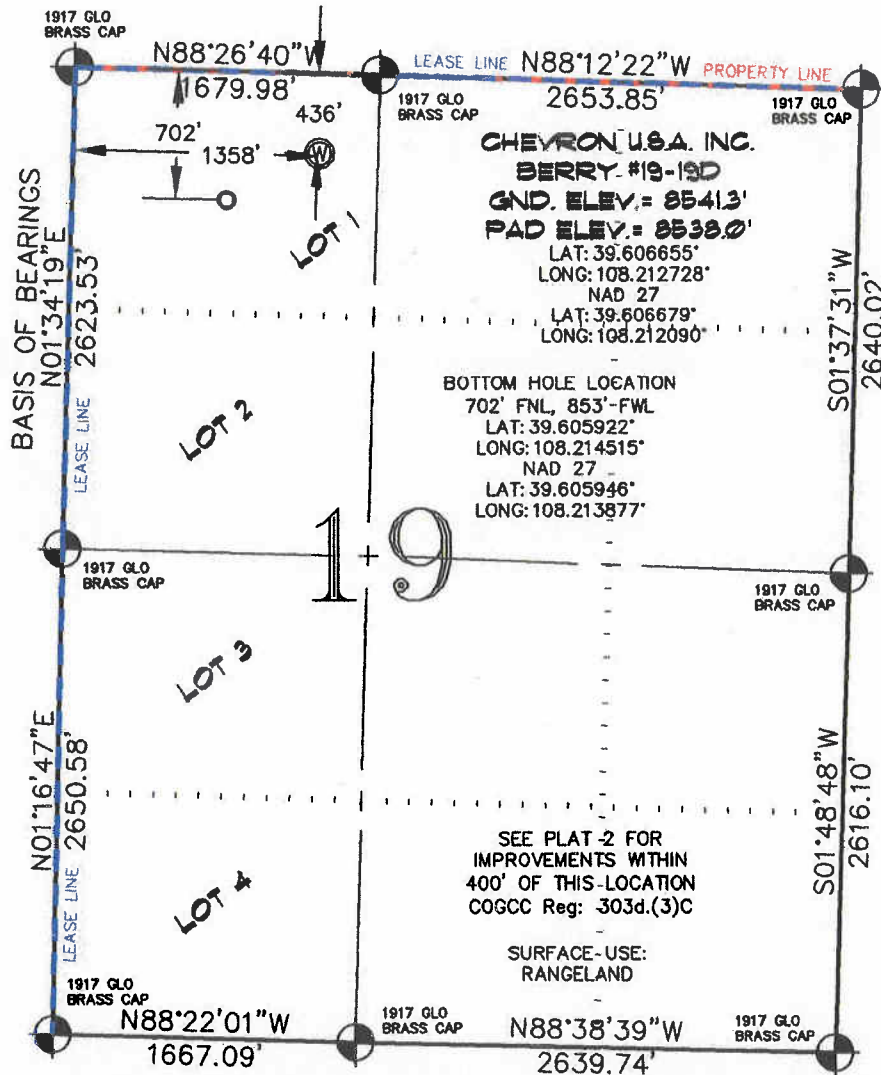
**CONSTRUCTION SURVEYS, INC.**

2012 SUNRISE BLVD.  
SILT, CO 81652  
(970)876-5753

SURVEYED: 12/08/09	SCALE: 1" = 1000'
DRAFTED: 12/21/09	DWG: CHEVRON C-19-596
CHECKED: 03/24/10	SHEET: 1 of 11

SEC. 19, T. 5 S., R. 96 W. OF THE 6TH P.M.

Chevron C-19-596  
Pad Location



GRAPHIC SCALE IN FEET  
1 INCH = 1000 FEET

#### -LEGEND-

- SECTION CORNER LOCATION  
BASED ON GLO RECORD  
INFORMATION
- ⊕ FIELD SURVEYED SECTION  
CORNER LOCATIONS
- ⊙ FIELD SURVEYED PAD  
LOCATION
- CALCULATED BOTTOM  
HOLE LOCATION

**THIS WELL LOCATION PLAT WAS PREPARED FOR BERRY PETROLEUM COMPANY, TO LOCATE THE BERRY #19-19D WELL, 436 FEET FROM THE NORTH LINE AND 1358 FEET FROM THE WEST LINE IN LOT 1 OF SECTION 19, T. 5 S., R. 96 W. OF THE 6TH P.M. GARFIELD COUNTY, COLORADO.**

#### REFERENCE NOTES

- 1) T. 5 S., R. 96 W., 6TH P.M. GLO PLAT.
- 2) U.S.G.S. QUAD: CIRLCE DOT GULCH, CO
- 3) ELEVATIONS BASED ON N.A.V.D. 1988
- 4) LATITUDES AND LONGITUDES ARE BASED ON NAD 83, COLORADO CENTRAL ZONE.
- 5) GPS OPERATOR ROBERT WOOD, OBSERVED A PDOP OF 2.6.
- 6) ALL GPS OBSERVATIONS ARE IN COMPLIANCE WITH COGCC RULE NO. 215.
- 7) SURFACE AND BOTTOM HOLE LOCATIONS ARE MEASURED 90° FROM SECTION LINES.

#### SURVEYOR'S CERTIFICATE

I, George R. Bauer: a Professional Land Surveyor in the State of Colorado do hereby certify that this Survey was made under my direct supervision, and that this plat represents said Survey.



COLORADO P.L.S. 27925

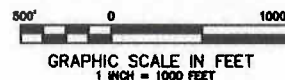
VIEW: 1C



**CONSTRUCTION SURVEYS, INC.**  
0012 SUNRISE BLVD.  
SILT, CO 81652  
(970)876-5753

SURVEYED: 12/08/09	SCALE: 1" = 1000'
DRAFTED: 12/21/09	DWG: CHEVRON C-19-596
CHECKED: 03/24/10	SHEET: 1 of 11

Chevron C-19-596  
Pad Location



- SECTION CORNER LOCATION  
BASED ON GLO RECORD  
INFORMATION
- FIELD SURVEYED SECTION  
CORNER LOCATIONS
- FIELD SURVEYED PAD  
LOCATION
- CALCULATED BOTTOM  
HOLE LOCATION

## REFERENCE NOTES

- 1) T. 5 S., R. 96 W., 6TH P.M. GLO PLAT.
- 2) U.S.G.S. QUAD: CIRLCE DOT GULCH, CO
- 3) ELEVATIONS BASED ON N.A.V.D. 1988
- 4) LATITUDES AND LONGITUDES ARE BASED ON  
NAD 83, COLORADO CENTRAL ZONE.
- 5) GPS OPERATOR ROBERT WOOD, OBSERVED  
A PDOP OF 2.6.
- 6) ALL GPS OBSERVATIONS ARE IN COMPLIANCE  
WITH COGCC RULE NO. 215.
- 7) SURFACE AND BOTTOM HOLE LOCATIONS  
ARE MEASURED 90' FROM SECTION LINES.

I, George R. Bauer: a Professional Land Surveyor in the State of Colorado do hereby certify that this Survey was made under my direct supervision, and that this Plan represents said Survey.

COLORADO P.L.S. 27925



VIEW: 1D



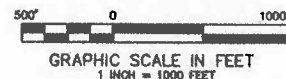
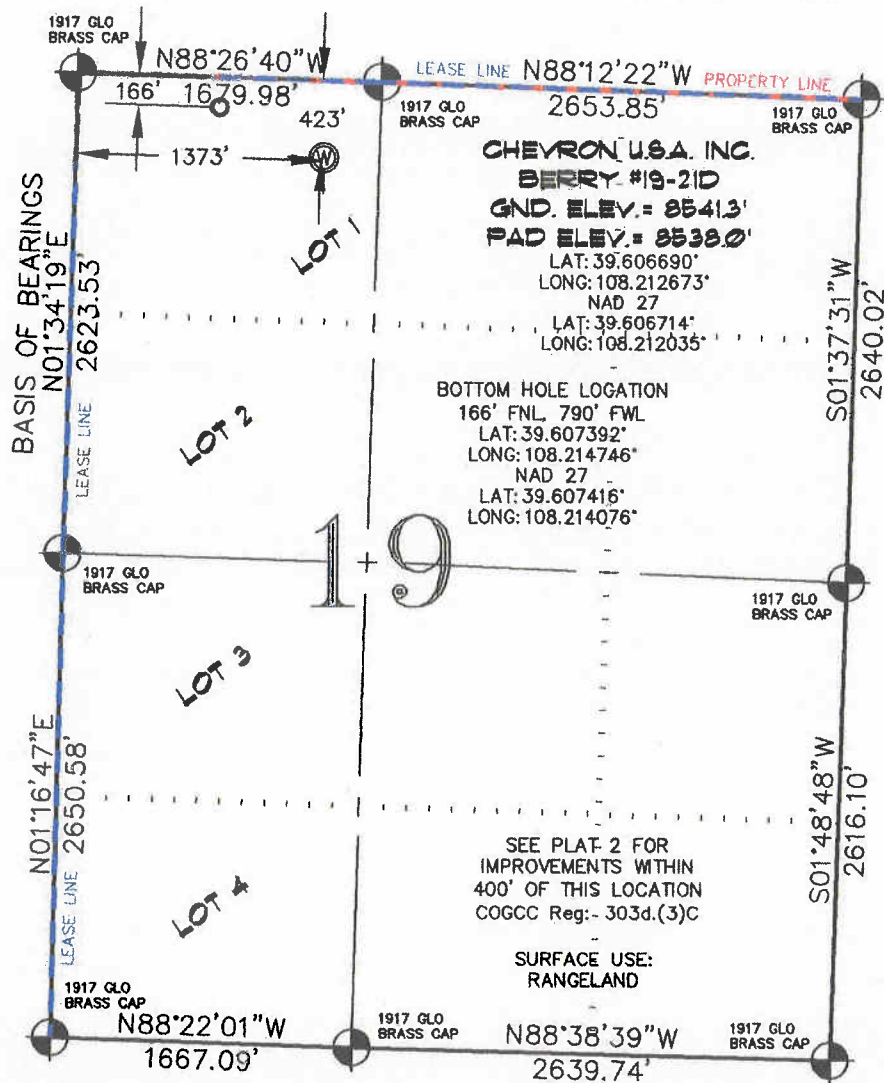
CONSTRUCTION SURVEYS, INC.  
0012 SUNRISE BLVD.  
SILT, CO 81652  
(970)876-5753

SURVEYED: 12
DRAFTED: 12
CHECKED: 02

SURVEYED: 12/08/09	SCALE: 1" = 1000'
DRAFTED: 12/21/09	DWG: CHEVORN C-19-596
CHECKED: 03/24/10	SHEET: 1 of 11

SEC. 19, T. 5 S., R. 96 W. OF THE 6TH P.M.

Chevron C-19-596  
Pad Location



### -LEGEND-

- SECTION CORNER LOCATION  
BASED ON GLO RECORD  
INFORMATION
- FIELD SURVEYED SECTION  
CORNER LOCATIONS
- ⊙ FIELD SURVEYED PAD  
LOCATION
- CALCULATED BOTTOM  
HOLE LOCATION

THIS WELL LOCATION PLAT WAS PREPARED FOR BERRY PETROLEUM COMPANY, TO LOCATE THE BERRY #19-21D WELL, 423 FEET FROM THE NORTH LINE AND 1373 FEET FROM THE WEST LINE IN LOT 1 OF SECTION 19, T. 5 S., R. 96 W. OF THE 6TH P.M. GARFIELD COUNTY, COLORADO.

### REFERENCE NOTES

- 1) T. 5 S., R. 96 W., 6TH P.M. GLO PLAT.
- 2) U.S.G.S. QUAD: CIRLCE DOT GULCH, CO
- 3) ELEVATIONS BASED ON N.A.V.D. 1988
- 4) LATITUDES AND LONGITUDES ARE BASED ON NAD 83, COLORADO CENTRAL ZONE.
- 5) GPS OPERATOR ROBERT WOOD, OBSERVED A PDOP OF 2.6.
- 6) ALL GPS OBSERVATIONS ARE IN COMPLIANCE WITH COGCC RULE NO. 215.
- 7) SURFACE AND BOTTOM HOLE LOCATIONS ARE MEASURED 90° FROM SECTION LINES.

### SURVEYOR'S CERTIFICATE

I, George R. Bauer: a Professional Land Surveyor in the State of Colorado do hereby certify that this Survey was made under my direct supervision, and that this Plat represents said Survey.



COLORADO P.L.S. 27925



CONSTRUCTION SURVEYS, INC.  
0012 SUNRISE BLVD.  
SILT, CO 81652  
(970)876-5753

VIEW: 1E

SURVEYED: 12/08/09	SCALE: 1" = 1000'
DRAFTED: 12/21/09	DWG: CHEVRON C-19-596
CHECKED: 03/24/10	SHEET: 1 of 11