

# T6S, R95W, 6th P.M.

WC  
1921 Brass Cap  
1.0' High, Pile  
of Stones  
Lat: 39.517658  
Long: 108.013317

S89°58'52"E -  
2597.99' (Meas.)

1921 Brass Cap  
1.9' High  
Lat: 39.517644  
Long: 107.994442

N89°57'30"E - 2662.51' (Meas.)

LINE	BEARING	LENGTH
L1	S89°57'09"W	295.68'
L2	S89°57'09"W	212.52'
L3	S89°46'46"W	254.02'
L4	NORTH	198.00'
L5	N00°01'33"W	118.80'
L6	N00°01'33"W	66.00'
L7	N89°57'41"W	66.00'
L8	S89°57'30"W	640.20'
L9	N00°10'11"W	330.00'

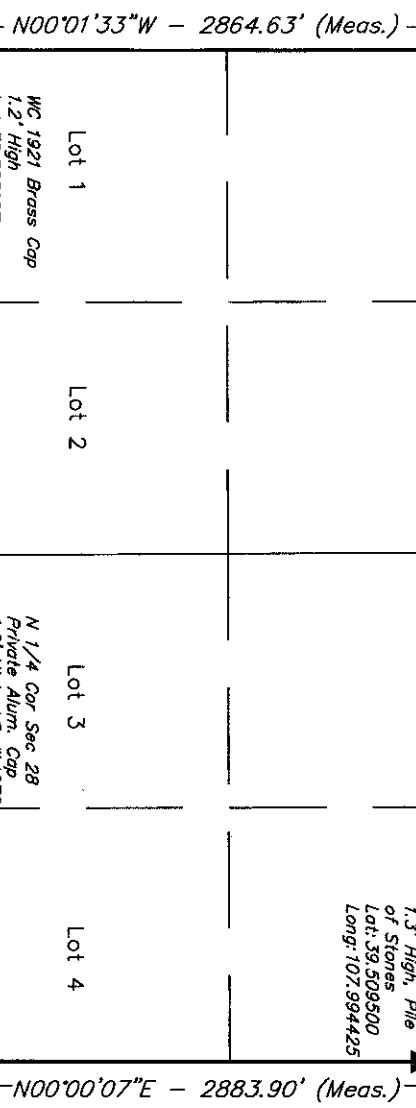
TARGET  
BOTTOM  
HOLE

790'

FEDERAL PA 11-21  
Elev. Ungraded Ground = 6023'

21

1921 Brass Cap  
1.3' High, Pile  
of Stones  
Lat: 39.509500  
Long: 107.994425



## LEGEND:

- 90° SYMBOL
- PROPOSED WELL HEAD.
- SECTION CORNERS LOCATED.
- SECTION CORNERS RE-ESTAB.
- BY SINGLE PROPORTION METHOD.

NAD 83 (TARGET BOTTOM HOLE)		NAD 83 (SURFACE LOCATION)	
LATITUDE = 39°31'01.56" (39.517100)	LATITUDE = 39°30'38.83" (39.510786)		
LONGITUDE = 108°00'37.03" (108.010286)	LONGITUDE = 108°00'29.25" (108.008125)		
STATE PLANE-(COLO. CENTRAL-NAD 83)	STATE PLANE-(COLO. CENTRAL-NAD 83)		
N = 1623078.300	N = 1620700.586		
E = 2291898.600	E = 2292444.804		

## WILLIAMS PRODUCTION RMT COMPANY

Well location, FEDERAL PA 11-21, located as shown in the SE 1/4 NW 1/4 of Section 21, T6S, R95W, 6th P.M., Garfield County, Colorado.

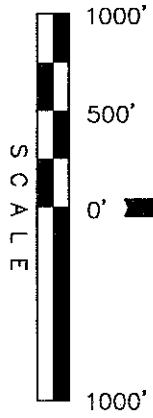
### BASIS OF ELEVATION

SPOT ELEVATION AT THE NORTHWEST CORNER OF SECTION 30, T5S, R95W, 6th P.M. TAKEN FROM THE FORKED GULCH QUADRANGLE, COLORADO, GARFIELD COUNTY, 7.5 MINUTE SERIES (TOPOGRAPHICAL MAP) PUBLISHED BY THE UNITED STATES DEPARTMENT OF THE INTERIOR, GEOLOGICAL SURVEY. SAID ELEVATION IS MARKED AS BEING 5966 FEET.

### BASIS OF BEARINGS

BASIS OF BEARINGS IS A G.P.S. OBSERVATION.

NOTE:  
SEE CURRENT FOOTAGE PLAT #6 FOR  
EXISTING IMPROVEMENT WITHIN 400'  
OF THE PROPOSED WELL HEAD.



### CERTIFICATE

THIS IS TO CERTIFY THAT THE ABOVE PLATS WERE PREPARED FROM FIELD NOTES OF ACTUAL SURVEYS MADE BY ME OR UNDER MY SUPERVISION AND THAT THE SAME ARE TRUE AND CORRECT TO THE BEST OF MY KNOWLEDGE AND BELIEF.

REGISTERED AND EXPIRING  
REGISTRATION NO. 17492  
STATE OF COLORADO

UNTAH ENGINEERING & LAND SURVEYING  
85 SOUTH 200 EAST - VERNAL, UTAH 84078  
(435) 789-1017

SCALE	DATE SURVEYED:	DATE DRAWN:
1" = 1000'	02-23-09	03-30-10

PARTY	WEATHER	FILE
B.H. G.O. D.R.B. REFERENCES		
WILLIAMS PRODUCTION RMT COMPANY		