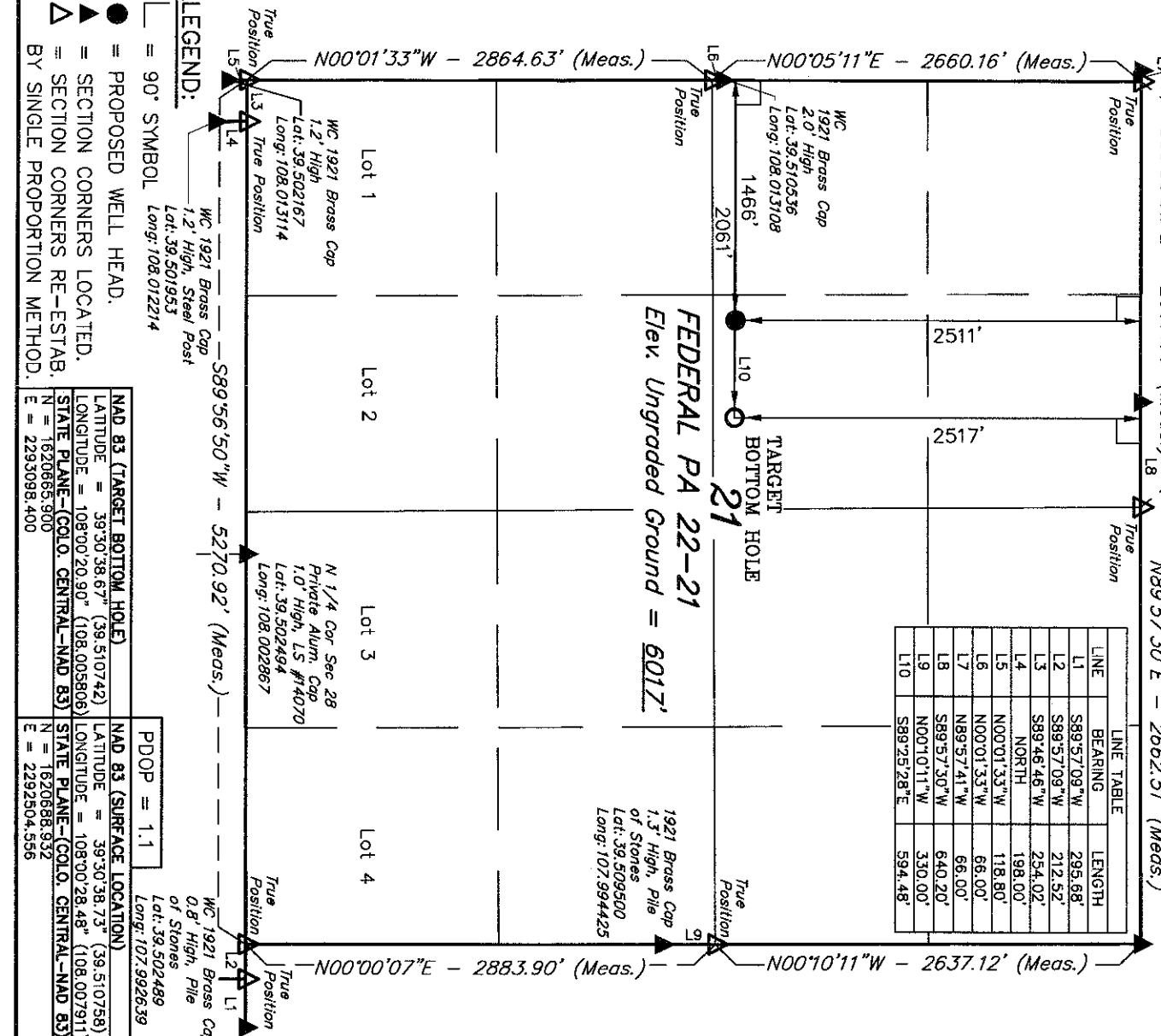


T6S, R95W, 6th P.M.

WC
1921 Brass Cap
1.0' High, Pile
of Stones
Lat: 39.517658
Long: 108.013317

WC
1921 Brass Cap
2.0' High
Lat: 39.517647
Long: 108.006144

1921 Brass Cap
1.9' High
Lat: 39.517644
Long: 107.994442



LINE	BEARING	LENGTH
L1	S89°57'09\"W	295.68'
L2	S89°57'09\"W	212.52'
L3	S89°46'46\"W	254.02'
L4	NORTH	198.00'
L5	N00°01'33\"W	118.80'
L6	N00°01'33\"W	66.00'
L7	S89°57'41\"W	66.00'
L8	S89°57'30\"W	640.20'
L9	N00°10'11\"W	330.00'
L10	S89°25'28\"E	594.48'

WILLIAMS PRODUCTION RMT COMPANY

Well location, FEDERAL PA 22-21, located as shown in the SE 1/4 NW 1/4 of Section 21, T6S, R95W, 6th P.M., Garfield County, Colorado.

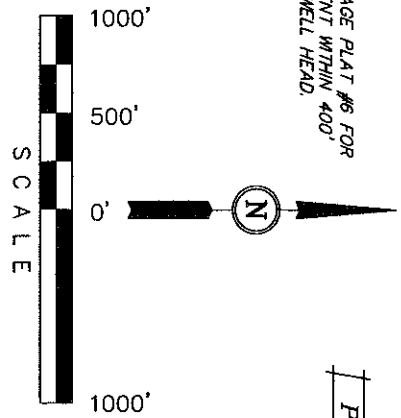
BASIS OF ELEVATION

SPOT ELEVATION AT THE NORTHWEST CORNER OF SECTION 30, T5S, R95W, 6th P.M. TAKEN FROM THE FORKED GULCH QUADRANGLE, COLORADO, GARFIELD COUNTY, 7.5 MINUTE SERIES (TOPOGRAPHICAL MAP) PUBLISHED BY THE UNITED STATES DEPARTMENT OF THE INTERIOR, GEOLOGICAL SURVEY. SAID ELEVATION IS MARKED AS BEING 5966 FEET.

BASIS OF BEARINGS

BASIS OF BEARINGS IS A G.P.S. OBSERVATION.

NOTE:
SEE CURRENT FOOTAGE PLAT #6 FOR EXISTING IMPROVEMENT WITHIN 400' OF THE PROPOSED WELL HEAD.



CERTIFICATE

THIS IS TO CERTIFY THAT THE ABOVE PLAT WAS PREPARED FROM FIELD NOTES OF ACTUAL SURVEYS MADE BY ME OR UNDER MY SUPERVISION AND THAT THE SAME ARE TRUE AND CORRECT TO THE BEST OF MY KNOWLEDGE AND BELIEF.

REGISTERED AND SUPERVISOR
REGISTRATION NO. 1921
STATE OF COLORADO

UTAH ENGINEERING & LAND SURVEYING
85 SOUTH 200 EAST - VERNAL, UTAH 84078
(435) 789-1017

SCALE	1" = 1000'	DATE SURVEYED:	02-23-09	DATE DRAWN:	03-30-10
PARTY	B.H. G.O.	REFERENCES	G.L.O. PLAT		
WEATHER	WARM	FILE	WILLIAMS PRODUCTION RMT COMPANY		

- LEGEND:**
- 90° SYMBOL
 - PROPOSED WELL HEAD.
 - SECTION CORNERS LOCATED.
 - SECTION CORNERS RE-ESTAB. BY SINGLE PROPORTION METHOD.

NAD 83 (TARGET BOTTOM HOLE)	NAD 83 (SURFACE LOCATION)
LATITUDE = 39°30'38.67" (39.510742)	LATITUDE = 39°30'38.73" (39.510758)
LONGITUDE = 108°00'20.90" (108.005806)	LONGITUDE = 108°00'28.48" (108.007911)
STATE PLANE-(COLO. CENTRAL-NAD 83)	STATE PLANE-(COLO. CENTRAL-NAD 83)
N = 1620665.900	N = 1620668.932
E = 2293098.400	E = 2292504.556