

T6S, R95W, 6th P.M.

WILLIAMS PRODUCTION RMT COMPANY

Well location, FEDERAL PA 14-16 (SURFACE LOCATION), located as shown in the SE 1/4 NW 1/4 of Section 21, T6S, R95W, 6th P.M., Garfield County, Colorado.

BASIS OF ELEVATION

SPOT ELEVATION AT THE NORTHWEST CORNER OF SECTION 30, T5S, R95W, 6th P.M. TAKEN FROM THE FORKED GULCH QUADRANGLE, COLORADO, GARFIELD COUNTY, 7.5 MINUTE SERIES (TOPOGRAPHICAL MAP) PUBLISHED BY THE UNITED STATES DEPARTMENT OF THE INTERIOR, GEOLOGICAL SURVEY. SAID ELEVATION IS MARKED AS BEING 5966 FEET.

BASIS OF BEARINGS

BASIS OF BEARINGS IS A G.P.S. OBSERVATION.

NOTE:  
SEE CURRENT FOOTAGE PLAT #6 FOR  
EXISTING IMPROVEMENT WITHIN 400'  
OF THE PROPOSED WELL HEAD.



SCALE

CERTIFICATE

THIS IS TO CERTIFY THAT THE ABOVE DESCRIBED WELL LOCATION WAS FIELD NOTES OF ACTUAL SURVEY MADE BY ME OR UNDER MY SUPERVISION AND THAT THE SAME ARE TRUE AND CORRECT TO THE BEST OF MY KNOWLEDGE AND BELIEF.

REGISTERED LAND SURVEYOR  
STATE OF COLORADO

UNTAH ENGINEERING & LAND SURVEYING  
85 SOUTH 200 EAST - VERNAL, UTAH 84078  
(435) 789-1017

SCALE 1" = 1000'  
DATE SURVEYED: 02-23-09 DATE DRAWN: 03-30-10

PARTY B.H. G.O. D.R.B. REFERENCES G.L.O. PLAT

WEATHER WARM FILE WILLIAMS PRODUCTION RMT COMPANY

WC 1921 Brass Cap  
1.0' High, Pile  
of Stones  
Lat: 39.517658  
Long: 108.013317

S89°58'52"E -  
2597.99' (Meas.)

TARGET BOTTOM HOLE

N89°57'30"E - 2662.51' (Meas.)

1921 Brass Cap  
1.9' High  
Lat: 39.517644  
Long: 107.994442

True Position

True Position

True Position

True Position

WC 1921 Brass Cap  
2.0' High  
Lat: 39.517647  
Long: 108.006144

N11°40'24"W -  
2686.23'

LINE	BEARING	LENGTH
L1	S89°57'09"W	295.66'
L2	S89°57'09"W	212.52'
L3	S89°46'46"W	254.02'
L4	NORTH	198.00'
L5	N00°01'33"W	118.80'
L6	N00°01'33"W	66.00'
L7	N89°57'41"W	66.00'
L8	S89°57'30"W	640.20'
L9	N00°10'11"W	330.00'

N00°05'11"E - 2660.16' (Meas.)

WC 1921 Brass Cap  
2.0' High  
Lat: 39.510536  
Long: 108.013108

21

FEDERAL PA 14-16  
Elev. Ungraded Ground = 6022'

NOTE:  
THE PROPOSED BOTTOM HOLE FOR THIS WELL IS  
LOCATED IN THE SW 1/4 SW 1/4 OF SECTION 16,  
T6S, R95W, 6th P.M. AT A DISTANCE OF 129'  
FSL 866' F.W. IT BEARS N11°40'24"W 2686.23'  
FROM THE PROPOSED WELL HEAD.

Lot 1

Lot 2

Lot 3

Lot 4

WC 1921 Brass Cap  
1.2' High  
Lat: 39.502167  
Long: 108.013114

N 1/4 Cor. Sec. 28  
Private Alum. Cap  
1.0' High, LS #14070  
Lat: 39.502494  
Long: 108.002867

WC 1921 Brass Cap  
1.2' High, Steel Post  
Lat: 39.501953  
Long: 108.012214

LEGEND:

- = 90° SYMBOL
- = PROPOSED WELL HEAD.
- ▲ = SECTION CORNERS LOCATED.
- △ = SECTION CORNERS RE-ESTAB.
- BY SINGLE PROPORTION METHOD.

PDOP = 1.4

Lat: 39.502489  
Long: 107.992639

MAD 83 (SURFACE LOCATION)

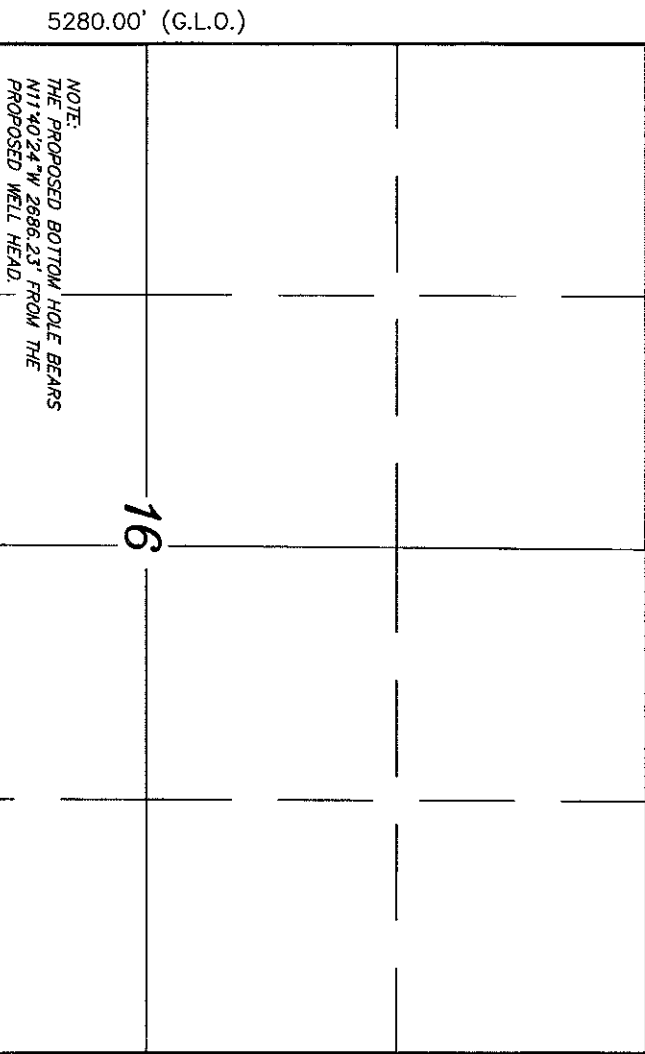
LATITUDE = 39°30'36.83" (39.510786)  
LONGITUDE = 108°00'29.15" (108.008092)

STATE PLANE - (COLO. CENTRAL-NAD 83)

N = 1620700.438  
E = 2292452.279

# T6S, R95W, 6th P.M.

S89°55'W - 5273.40' (G.L.O.)



- LEGEND:**
- = 90° SYMBOL
  - = PROPOSED WELL HEAD.
  - ▲ = SECTION CORNERS LOCATED.
  - △ = SECTION CORNERS RE-ESTAB. BY SINGLE PROPORTION METHOD.

1921 Brass Cap 1.0' High, Pile of Stones  
Lat: 39.517658  
Long: 108.013317

90°03' (G.L.O.)  
866' (Comp.)

FEDERAL PA 14-16  
TARGET BOTTOM HOLE

129' S89°58'52"E - 2597.99' (Meas.)

1921 Brass Cap 2.0' High  
Lat: 39.517647  
Long: 108.006144

1921 Brass Cap 1.9' High  
Lat: 39.517644  
Long: 107.994442

N89°57'30"E - 2662.51' (Meas.)

**NAD 83 (TARGET BOTTOM HOLE)**

LATITUDE = 39°31'04.83" (39.518008)  
LONGITUDE = 108°00'36.05" (108.010014)  
STATE PLANE-COLO. CENTRAL-NAD 83  
N = 1623344.800  
E = 2281984.700

## WILLIAMS PRODUCTION RMT COMPANY

Well location, FEDERAL PA 14-16 (TARGET BOTTOM HOLE), located as shown in the SW 1/4 SW 1/4 of Section 16, T6S, R95W, 6th P.M., Garfield County, Colorado.

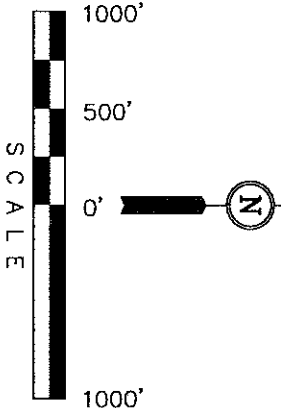
### BASIS OF ELEVATION

SPOT ELEVATION AT THE NORTHWEST CORNER OF SECTION 30, T6S, R95W, 6th P.M. TAKEN FROM THE FORKED GULCH QUADRANGLE, COLORADO, GARFIELD COUNTY, 7.5 MINUTE SERIES (TOPOGRAPHICAL MAP) PUBLISHED BY THE UNITED STATES DEPARTMENT OF THE INTERIOR, GEOLOGICAL SURVEY. SAID ELEVATION IS MARKED AS BEING 5966 FEET.

### BASIS OF BEARINGS

BASIS OF BEARINGS IS A G.P.S. OBSERVATION.

NOTE: SEE CURRENT FOOTAGE PLAT #6 FOR EXISTING IMPROVEMENT WITHIN 400' OF THE PROPOSED WELL HEAD.



### CERTIFICATE

THIS IS TO CERTIFY THAT THE ABOVE PLAT WAS PREPARED FROM FIELD NOTES OF ACTUAL SURVEYS MADE BY ME OR UNDER MY SUPERVISION AND THAT THE SAME ARE TRUE AND CORRECT TO THE BEST OF MY KNOWLEDGE AND BELIEF.

REGISTERED AND SURVEYOR  
REGISTRATION NO. 1992  
STATE OF COLORADO

**UINTAH ENGINEERING & LAND SURVEYING**

86 SOUTH 200 EAST - VERNAL, UTAH 84078

(435) 789-1017

SCALE	1" = 1000'	DATE SURVEYED:	DATE DRAWN:
PARTY	B.H. G.O. D.R.B.	REFERENCES	G.L.O. PLAT
WEATHER	WARM	FILE	WILLIAMS PRODUCTION RMT COMPANY