

BILL BARRETT CORP.

WELL LOCATION, GGU FEDERAL 43A-29-691
(MDP PAD #15), LOCATED AS SHOWN IN THE
NW 1/4 SE 1/4 OF SECTION 29, T6S, R91W,
6th P.M. GARFIELD COUNTY, COLORADO.



NOTES:

1. Well footages are measured at right angles to the Section Lines.
2. Bearings are based on Global Positioning Satellite observations.
3. G.P.S. Operator: D. Slauch, (PDOP) = 2.5

IMPROVEMENT NOTE:

See addendum to legal plat (sheet 2o) for existing improvements within 400' of the proposed well pad.

THIS IS TO CERTIFY THAT THE ABOVE PLAT WAS
PREPARED FROM FIELD NOTES ON ACTUAL SURVEYS
MADE BY ME OR UNDER MY SUPERVISION, THE LOCATION
HAS BEEN STAKED ON THE GROUND AS SHOWN ON THE
PLAT, AND THAT THE SAME ARE TRUE AND CORRECT
TO THE BEST OF MY KNOWLEDGE AND BELIEF.

REGISTERED LAND SURVEYOR.
REGISTRATION NO. 30125
STATE OF COLORADO

TRI STATE LAND SURVEYING & CONSULTING

180 NORTH VERNAL AVE. - VERNAL, UTAH 84078

(435) 781-2501

DATE SURVEYED:
03-23-10

SURVEYED BY: C.D.S.

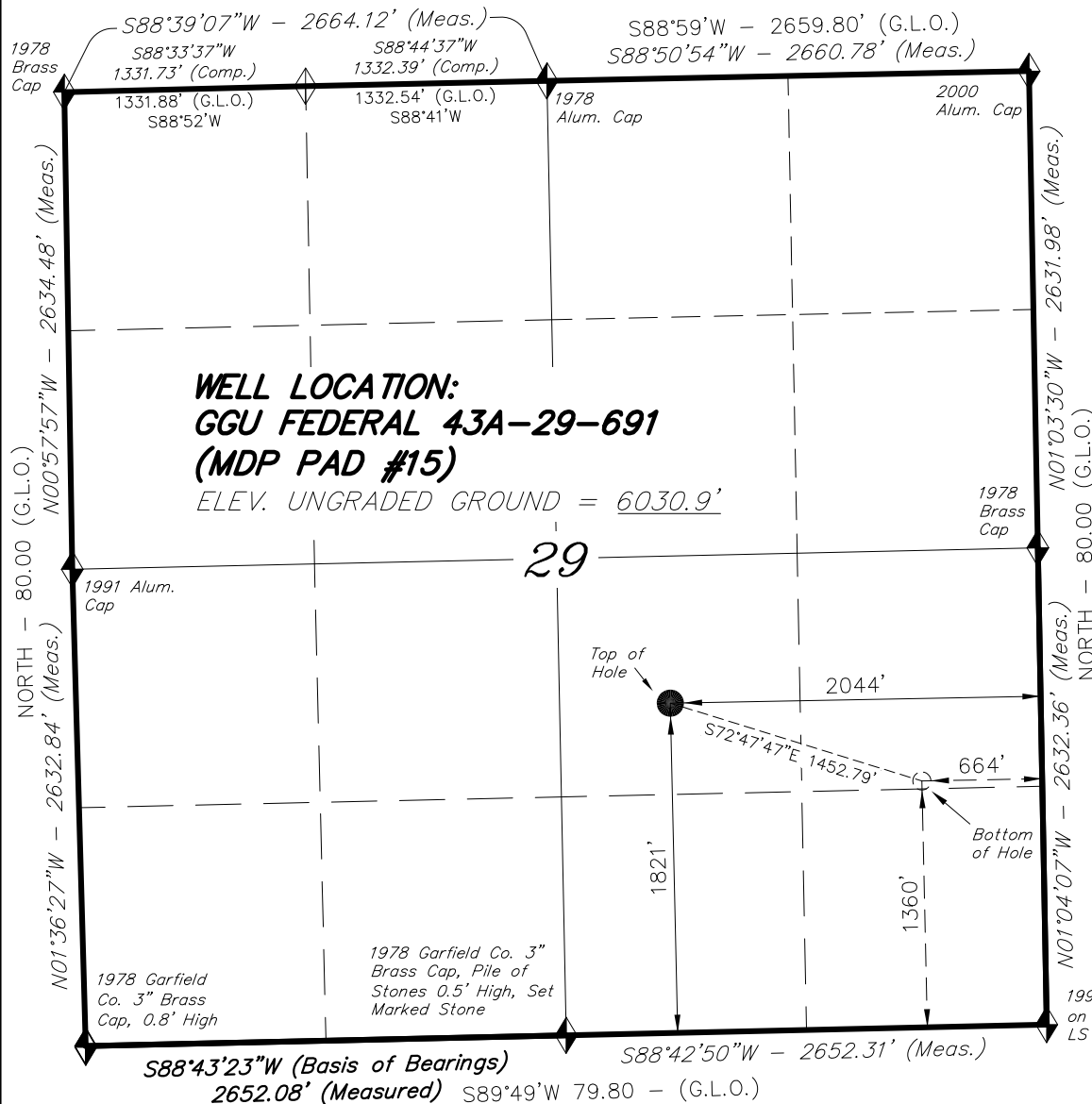
DATE DRAWN:
01-06-10

DRAWN BY: F.T.M.

REVISED:
03-23-10 F.T.M.

SCALE: 1" = 1000'

SHEET
2g
OF 12



NAD 83 (SURFACE LOCATION)

LATITUDE = 39°29'47.90"
(39.496639)

LONGITUDE = 107°34'32.35"
(107.575653)

 = SECTION CORNERS LOCATED

Basis of elevation is the Rifle 2 Triangulation Station. 39°31'53.80" N Lat. & 107°47'07.78" W Long. (NAD 83). Elevation = 5323.1' (NAVD88).