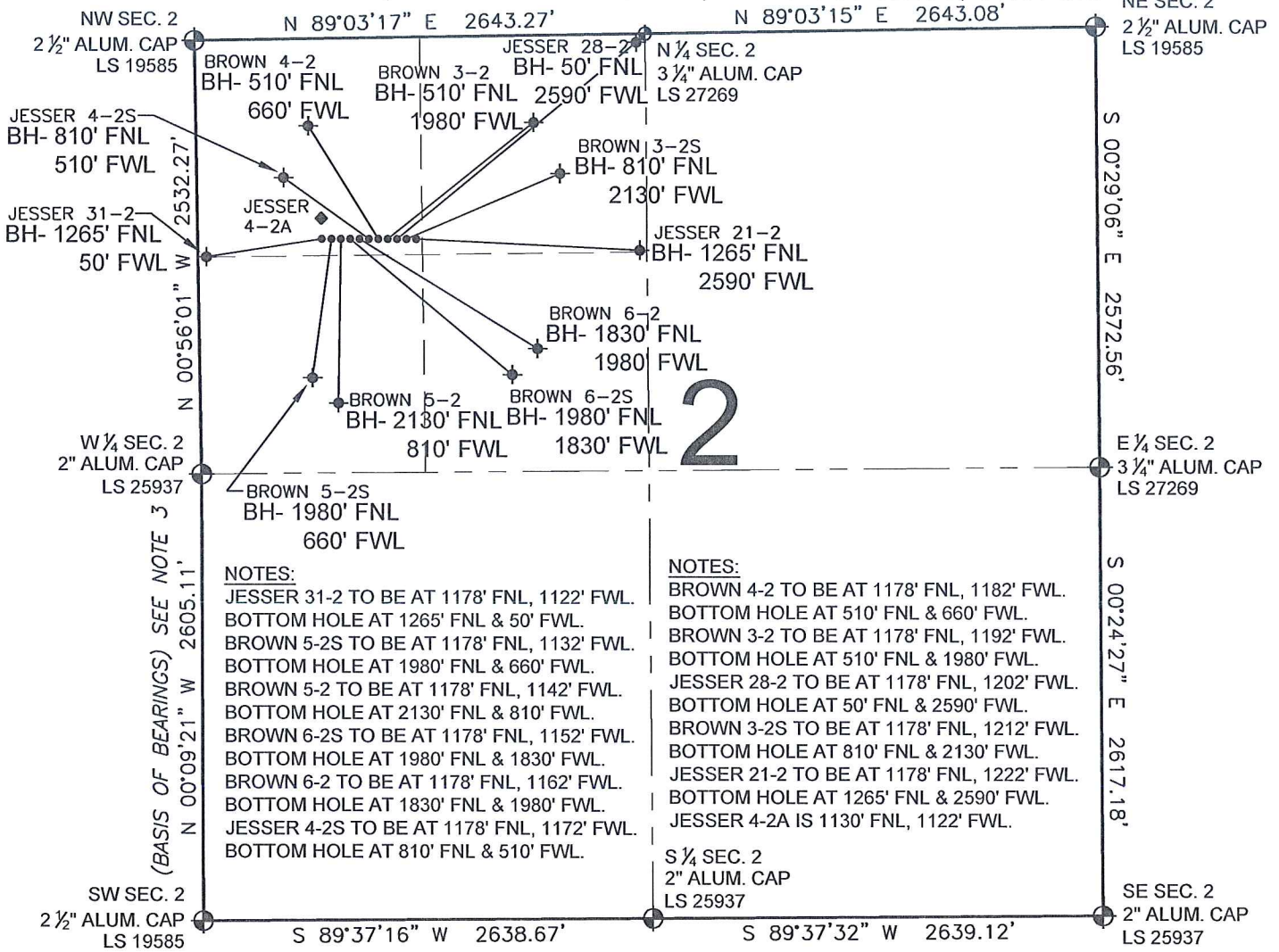


# PAD DRAWING - JESSER 11 PAD

SECTION 2, TOWNSHIP 1 NORTH, RANGE 66 WEST, 6TH P.M.



## NOTES:

JESSER 31-2 TO BE AT 1178' FNL, 1122' FWL.  
 BOTTOM HOLE AT 1265' FNL & 50' FWL.  
 BROWN 5-2S TO BE AT 1178' FNL, 1132' FWL.  
 BOTTOM HOLE AT 1980' FNL & 660' FWL.  
 BROWN 5-2 TO BE AT 1178' FNL, 1142' FWL.  
 BOTTOM HOLE AT 2130' FNL & 810' FWL.  
 BROWN 6-2S TO BE AT 1178' FNL, 1152' FWL.  
 BOTTOM HOLE AT 1980' FNL & 1830' FWL.  
 BROWN 6-2 TO BE AT 1178' FNL, 1162' FWL.  
 BOTTOM HOLE AT 1830' FNL & 1980' FWL.  
 JESSER 4-2S TO BE AT 1178' FNL, 1172' FWL.  
 BOTTOM HOLE AT 810' FNL & 510' FWL.

## NOTES:

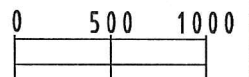
BROWN 4-2 TO BE AT 1178' FNL, 1182' FWL.  
 BOTTOM HOLE AT 510' FNL & 660' FWL.  
 BROWN 3-2 TO BE AT 1178' FNL, 1192' FWL.  
 BOTTOM HOLE AT 510' FNL & 1980' FWL.  
 JESSER 28-2 TO BE AT 1178' FNL, 1202' FWL.  
 BOTTOM HOLE AT 50' FNL & 2590' FWL.  
 BROWN 3-2S TO BE AT 1178' FNL, 1212' FWL.  
 BOTTOM HOLE AT 810' FNL & 2130' FWL.  
 JESSER 21-2 TO BE AT 1178' FNL, 1222' FWL.  
 BOTTOM HOLE AT 1265' FNL & 2590' FWL.  
 JESSER 4-2A IS 1130' FNL, 1122' FWL.

## NOTES:


- THIS SURVEY WAS DONE BY GPS METHODS AND CONFORMS TO THE MINIMUM STANDARDS SET BY THE C.O.G.C.C., RULE NO. 215
- ELEVATIONS SHOWN AT THE WELL HEAD, AS WELL AS HORIZONTAL CONTROL, ARE BASED ON GPS-RTK VALUES DERIVED FROM DOING 2-HOUR STATIC GPS SESSIONS AND REDUCTIONS USING O.P.U.S. SOLUTIONS.  
 VERTICAL = NAVD88; HORIZONTAL = NAD83/92
- THE BEARINGS SHOWN HEREON ARE BASED ON GPS OBSERVATIONS BETWEEN THE MONUMENTS SHOWN HEREON AS FOUND ON THE FIELD DATE BELOW.
- DISTANCES SHOWN ARE AT GROUND LEVEL, AS MEASURED IN THE FIELD, WITH TIES TO WELLS MEASURED AT PERPENDICULAR TO SECTION LINES.

## LEGEND

- = EXISTING MONUMENT   
 = BOTTOM HOLE   
 BH= BOTTOM HOLE  
 = PROPOSED WELL   
 = EXISTING WELL



SCALE: 1"=1000'

REVISIONS		PREPARED BY:	 Petroleum Field Services, LLC 1801 W. 13th Ave. Denver, CO 80204
INITIAL	DATE		

KERR-MCGEE OIL & GAS ONSHORE LP

FIELD DATE:  
02-23-10

PAD NAME:  
JESSER 11 PAD

DRAWING DATE:  
03-04-10

SURFACE LOCATION:

BY:  
SMF

WELD COUNTY, COLORADO  
 NW 1/4 NW 1/4, SEC. 2, T1N, R66W