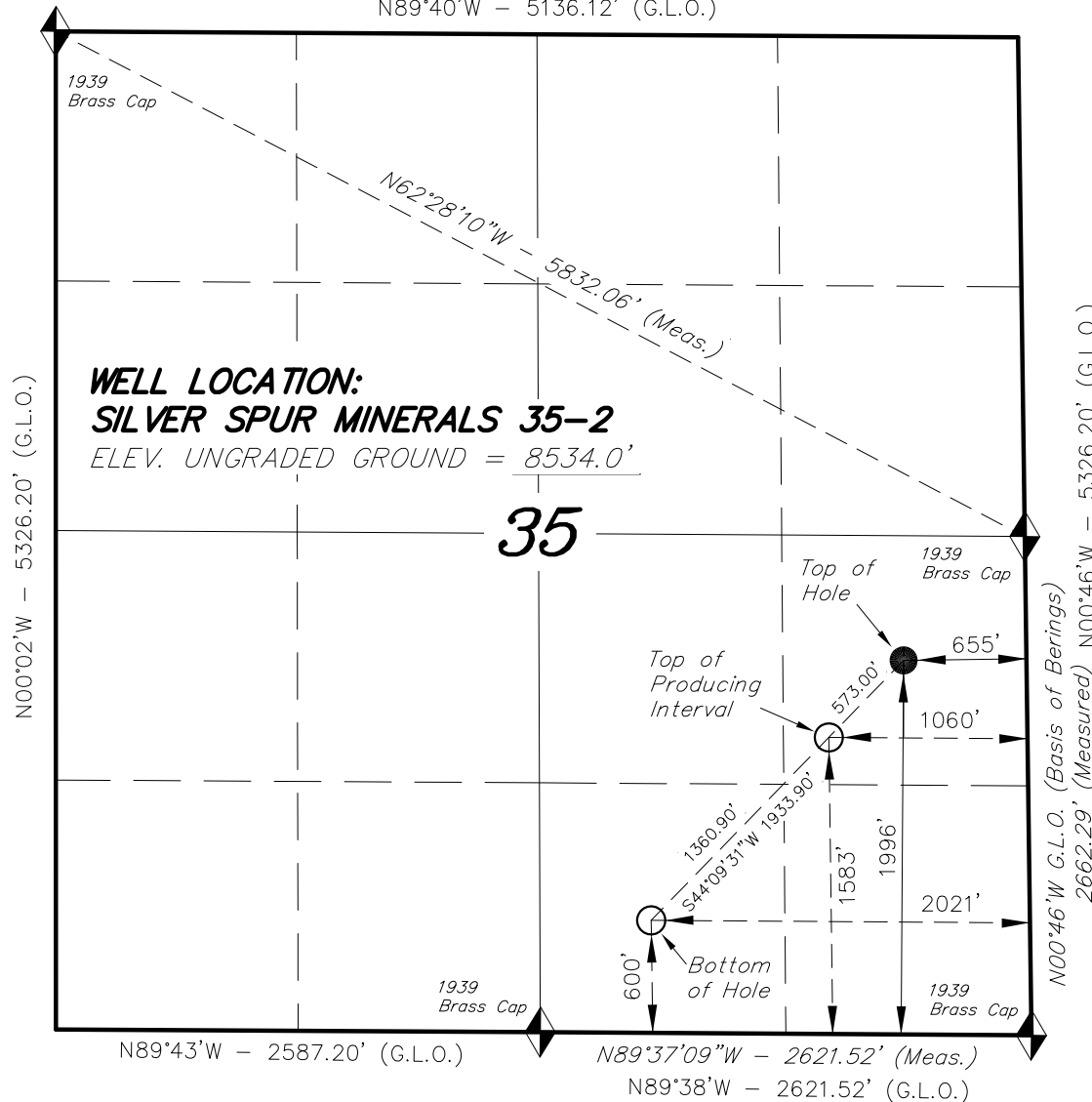


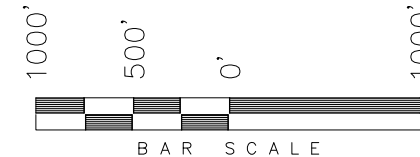
T8N, R78W, 6th P.M.

N89°40'W - 5136.12' (G.L.O.)



WELLSTAR CORPORATION

WELL LOCATION, SILVER SPUR MINERALS 35-2, LOCATED AS SHOWN IN THE NE 1/4 SE 1/4 OF SECTION 35, T8N, R78W, 6th P.M. JACKSON COUNTY, COLORADO.



NOTES:

1. Well footages are measured at right angles to the Section Lines.
2. Bearings are based on G.L.O. information.
3. G.P.S. Operator: P. Hawkes, (PDOP) = 2.5



THIS IS TO CERTIFY THAT THE ABOVE PLAT WAS PREPARED FROM FIELD NOTES OF A SURVEY MADE BY ME OR UNDER MY SUPERVISION. THE LOCATION HAS BEEN STAKED ON THE GROUND AS SHOWN ON THE PLAT, AND THAT THE SAME ARE TRUE AND CORRECT TO THE BEST OF MY KNOWLEDGE AND BELIEF.

[Signature]
 # 30125
 REGISTERED LAND SURVEYOR
 REGISTRATION No. 30125
 STATE OF COLORADO

◆ = SECTION CORNERS LOCATED

BASIS OF ELEV;
 U.S.G.S. 7-1/2 min QUAD (GOULD NW)

NAD 83 (SURFACE LOCATION)

LATITUDE = 40°37'04.96"
 (40.618044°)
 LONGITUDE = 106°06'21.48"
 (106.105967°)

TRI STATE LAND SURVEYING, INC.

180 NORTH VERNAL AVE. - VERNAL, UTAH 84078
 (435) 781-2501

DATE SURVEYED: 12-10-08	SURVEYED BY: P.H.	SHEET 1a OF 7
DATE DRAWN: 12-17-08	DRAWN BY: F.T.M.	
REVISED: 04-16-10 - M.W.	SCALE: 1" = 1000'	