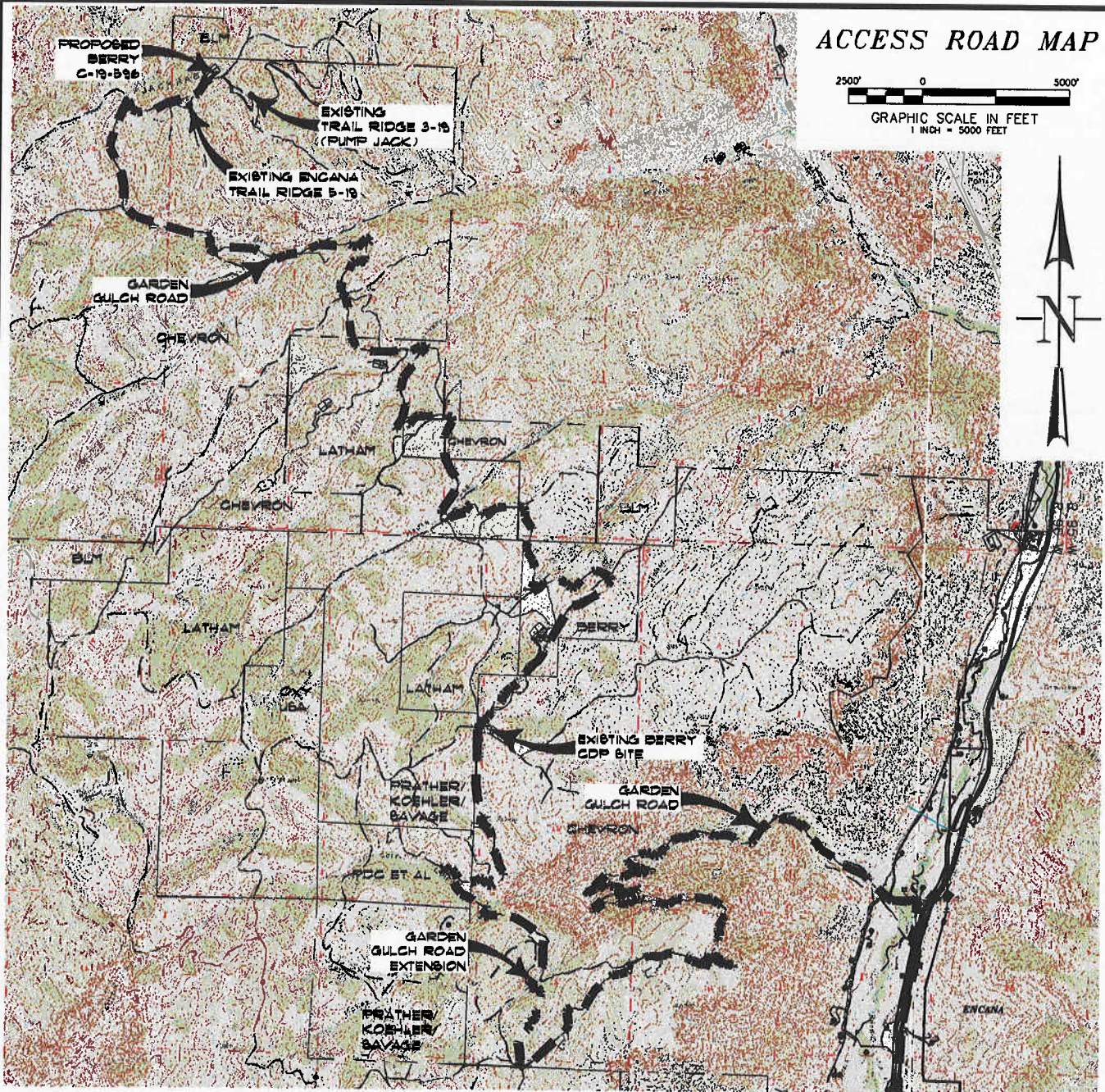
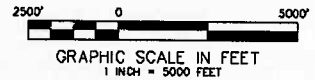


ACCESS ROAD MAP



ACCESS:

FROM THE INTERSECTION OF HIGHWAY 6 & 24 AND COUNTY ROAD 215 AT PARACHUTE, PROCEED IN A GENERAL NORTHWESTERLY DIRECTION ALONG COUNTY ROAD 215 ± 7.2 MILES TO AN INTERSECTION WITH A DIRT/GRAVEL ROAD ON THE LEFT, PROCEED LEFT IN A GENERAL NORTHWESTERLY DIRECTION ± 350 FEET TO AN INTERSECTION WITH A DIRT/GRAVEL ROAD ON THE RIGHT, PROCEED RIGHT IN A GENERAL NORTHERLY DIRECTION ± 0.3 MILES TO AN INTERSECTION WITH A DIRT/GRAVEL ROAD ON THE LEFT, PROCEED LEFT IN A GENERAL WESTERLY DIRECTION CROSSING THE PARACHUTE CREEK BRIDGE, PROCEED IN A GENERAL WESTERLY DIRECTION ALONG THE GARDEN GULCH ROAD ASCENDING THRU THE BOOKCLIFFS ± 10.4 MILES TO THE BERRY CDP SITE ON THE RIGHT, CONTINUE ALONG THE GARDEN GULCH ROAD PAST THE BERRY CDP SITE IN A GENERAL NORTHERLY DIRECTION ± 8.6 MILES TO AN INTERSECTION WITH A DIRT/GRAVEL ROAD ON THE RIGHT, PROCEED RIGHT IN A GENERAL EASTERLY DIRECTION ± 0.6 MILES TO A PROPOSED FLAGGED ACCESS CENTERLINE ON THE LEFT, PROCEED LEFT ALONG THE PROPOSED FLAGGED ACCESS CENTERLINE IN A GENERAL NORTHERLY DIRECTION ± 300 FEET TO THE PROPOSED BERRY C-19-596 WELL SITE, BEING THE LOCATION.



CONSTRUCTION SURVEYS, INC.
 0012 SUNRISE BLVD.
 SILT, CO 81652
 (970)876-5753

Chevron C-19-596
 LOT 1 OF SECTION 19, T. 5 S., R. 96 W.
 BERRY PETROLEUM COMPANY

SCALE: 1" = 5000'

SHEET 4 OF 11