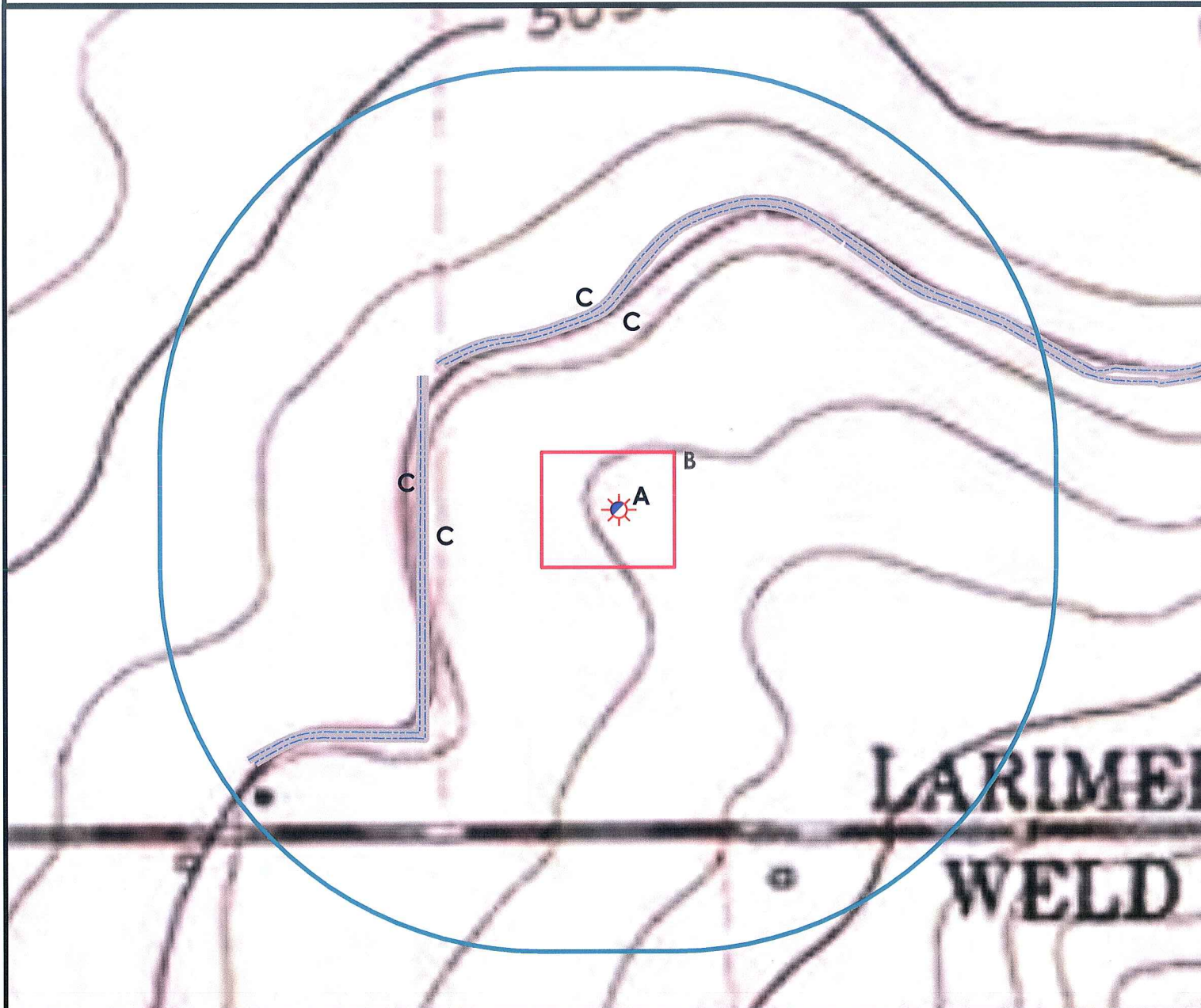


# Hydrology Map



- A. Proposed Well VADER 33-15.  
 B. Operational Disturbance Area.  
 C. Concrete Irrigation Ditches are 490' NW, 510' NW, 507' W & 523' W.



0 200 400 800  
 Feet

## Legend

- |                      |                     |
|----------------------|---------------------|
| Proposed Well        | Building/Residence  |
| Existing Well        | Oil & Gas Equipment |
| Plugged Well         | Water Body          |
| Water Well           | Utility Box         |
| CattleGuard/Gate     | Railroad            |
| Bridge               | Fence               |
| Disturbance Area     | Overhead Power Line |
| 1000' Radius         | Pipeline            |
| Facilities Enclosure | Access Road         |
|                      | Ditch/Canal         |
|                      | Concrete Ditch      |

## 1000ft Radius Map of Surface Waters and Riparian Areas

### VADER 33-15

Surface Location: T5N R68W S33

Field Date: 3/30/2010  
 Drawing Date: 3/30/2010  
 Drafter: CGR  
 Checked By: BHF

Topographic data courtesy of USGS

Prepared for:  
 S & P ENERGY, LLC



Use our resources to find yours!  
[www.petro-fs.com](http://www.petro-fs.com)

1801 W. 13th Ave Suite 207  
 Denver, CO 80204 Rifle, CO 81650  
 (303) 928-7128 (970) 625-4740